

HIDCO®

R E D Ü K T Ö R

güç kontrol sistemleri
power control systems



H Tipi
Redüktör
H Type
Reducer

Hidco Redüktör ürünlerinin online satışını için
For online sales of Hidco Reducers

shop.hidco.com.tr



hakkımızda / about us

HIDCO REDÜKTÖR İHT İHR SAN TİC. LTD. ŞTİ.

HIDCO Redüktör ; Global bir marka olmak hedefiyle ihracat amaçlı yüksek kaliteli sessiz ve titreşimsiz redüktörler üretmek için kurulmuştur.

Hidco 45 yıllık tecrübesi ve müşterilerinin ihtiyaçlarına uygun teknolojik ve inovatif çözümlerini birleştirerek modern tesislerinde CNC işleme tezgahları ile yüksek kalitede, sessiz ve titreşimsiz redüktörler üretmektedir.

HIDCO REDUCERS

Hidco was established to produce high quality gearboxes for exportation. The aim of the company is become a global trademark.

Hidco produces high quality, silent, non vibrable gearboxes with CNC machines at modern plants by combining 45 years of experience with technological, innovative solutions considering the needs of their customers

içindekiler / contents

İçindekiler Contents	1	H5 Teknik Veri - H5 Yedek Parça H5 Technical Data - H5 Spare Parts	16-17
Neden Hidco? Why Hidco?	2	H6 Teknik Veri - H6 Yedek Parça H6 Technical Data - H6 Spare Parts	18-19
Sipariş Şekli Order Type	3	H7 Teknik Veri - H7 Yedek Parça H7 Technical Data - H7 Spare Parts	20-21
Dişli Tanımı Gear Information	4	H2 Kayış Tahriki H2 Belt Drive	22
Etiket Tanımı Label Information	5	H3 Kayış Tahriki H3 Belt Drive	23
Yağlama Tablosu Lubrication Table	6-7	H4 Kayış Tahriki H4 Belt Drive	24
Servis Faktörleri Service Factors	8	H5 Kayış Tahriki H5 Belt Drive	25
Performans Tablosu Performance Rating	9	H6 Kayış Tahriki H6 Belt Drive	26
H2 Teknik Veri - H2 Yedek Parça H2 Technical Data - H2 Spare Parts	10-11	H7 Kayış Tahriki H7 Belt Drive	27
H3 Teknik Veri - H3 Yedek Parça H3 Technical Data - H3 Spare Parts	12-13	Notlarınız Notes	28
H4 Teknik Veri - H4 Yedek Parça H4 Technical Data - H4 Spare Parts	14-15	Hidco Aplikasyon Hidco Application	29

Neden Hidco Redüktör? Why Hidco Reducer?

Sipariş Şekli Order Type



Hızlı Teslimat
Fast delivery



Yüksek Kalite
High quality



45 Yıllık Tecrübe
45 Years Experience



Uygun Fiyat
Fair Price

HIDCO
REDÜKTÖR



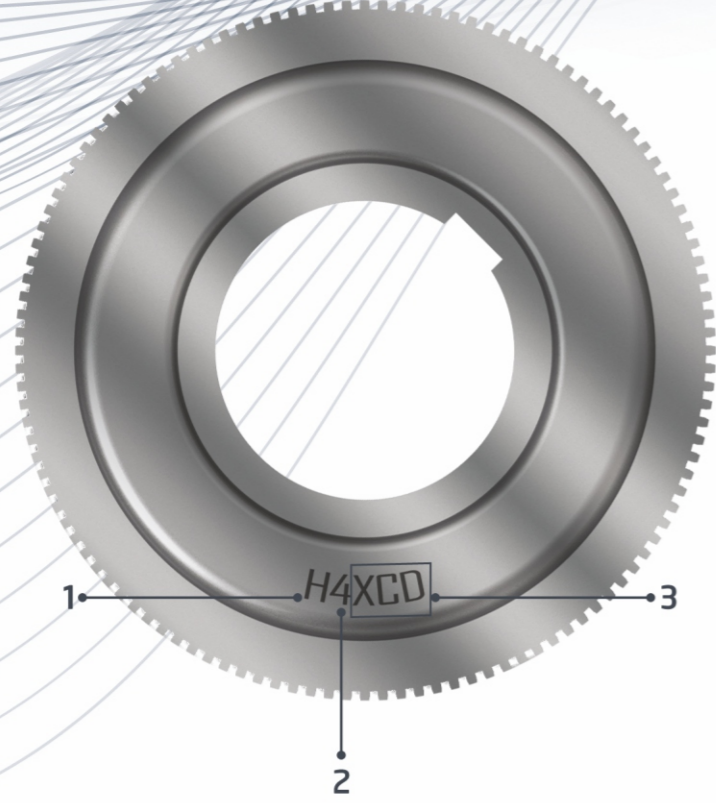
Boyut / Size
H2 - H3 - H4 - H5 - H6 - H7

Tahvil / Ratio
13 - 20

Kilit / Lock
0 - Kilitli / Locked
1 - Kilitli / Locked

Giriş Mili Çapı / Input Shaft Diameter
0 - Standart / Standard
1 - Özel / Special

Çıkış Mili Çapı / Output Shaft Diameter
0 - Standart / Standard
1 - Özel / Special




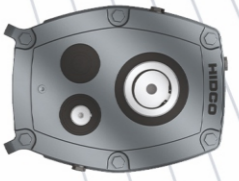

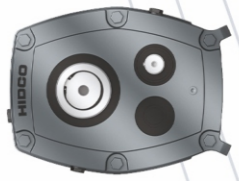
- 1 - Redüktör Tipi / Reducer Type
2 - Gövde Büyüklüğü / Body Size
3 - Dişli Kodu / Gear Code

HIDCO REDÜKTÖR	0236 314 34 14 0850 840 62 51
1 - TYPE : H5	5 - i : 20
2 - OIL : ISO VG 220 MNR	6 - OIL QTY : 2,70 Lt.
3 - PARTY SERIAL NUMBER : H5D20K165	
4 - COMP. POWER : 5,5 KW - 7,5 KW	
www.hidco.com.tr	bilgi@hidco.com.tr

- 1 - Tip / Type
2 - Yağ cinsi / Oil Type
3 - Seri Numarası / Serial Number

- 4 - Tavsiye Edilen Güç / Comp. Power
5 - Çevirim Oranı / Ratio
6 - Yağ Miktarı / Oil Qty

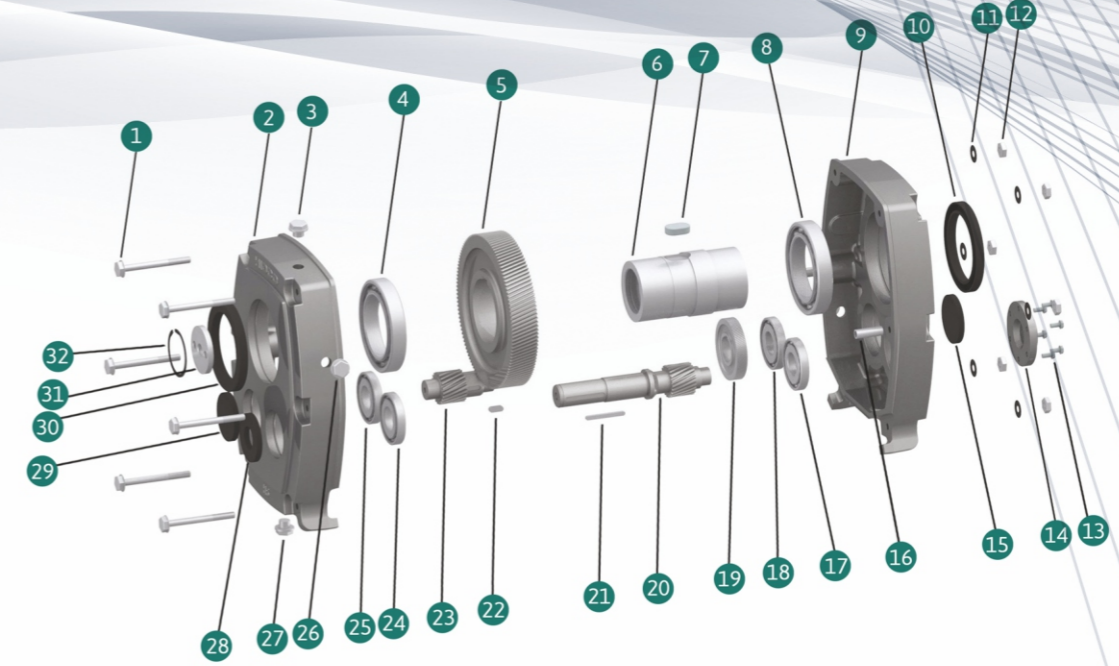
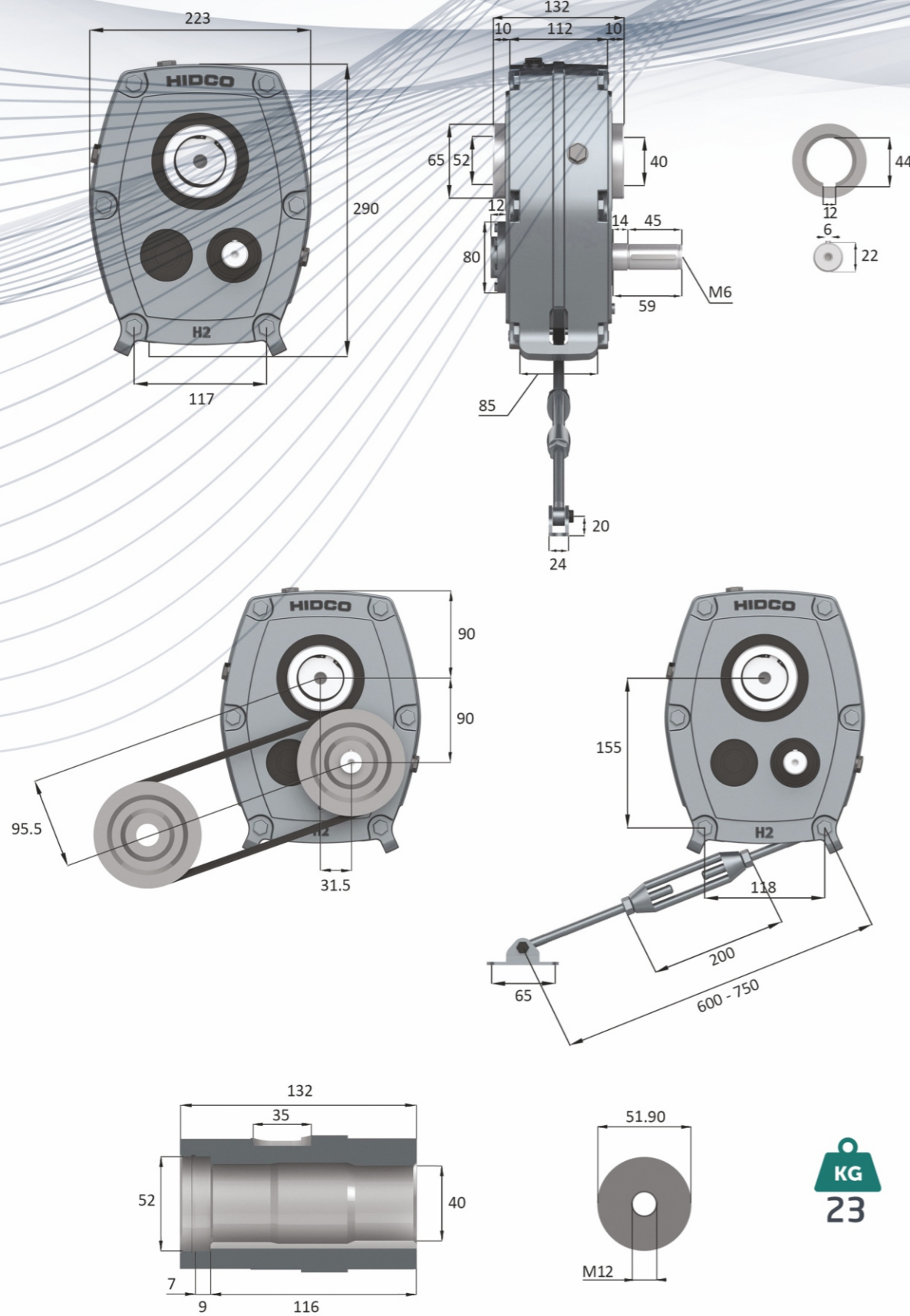


Pozisyon Position	Yaklaşık Kapasite (Litre) Appromiate Capacity (Liter)				A	C
	A	B	C	D		
H2	0,8	0,9	1	1		
H3	1,3	1,4	1,5	1,5		
H4	2	1,1	2,2	2,2		
H5	2,7	2,8	3	3		
H6	3,5	3,7	4	4		
H7	5,5	5,7	6	6		

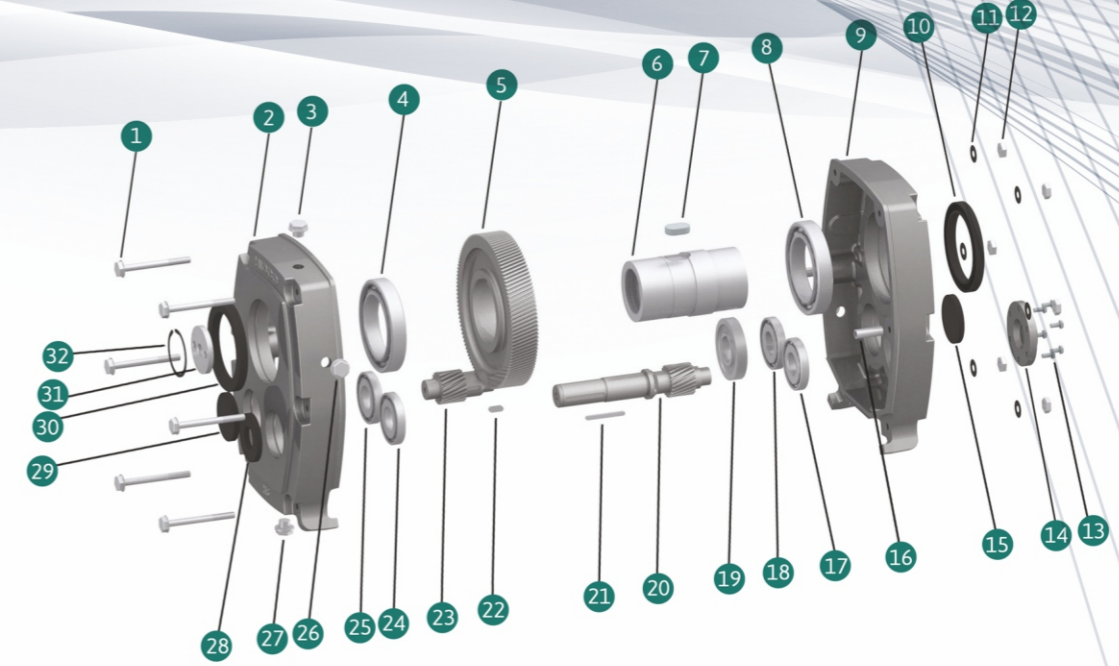
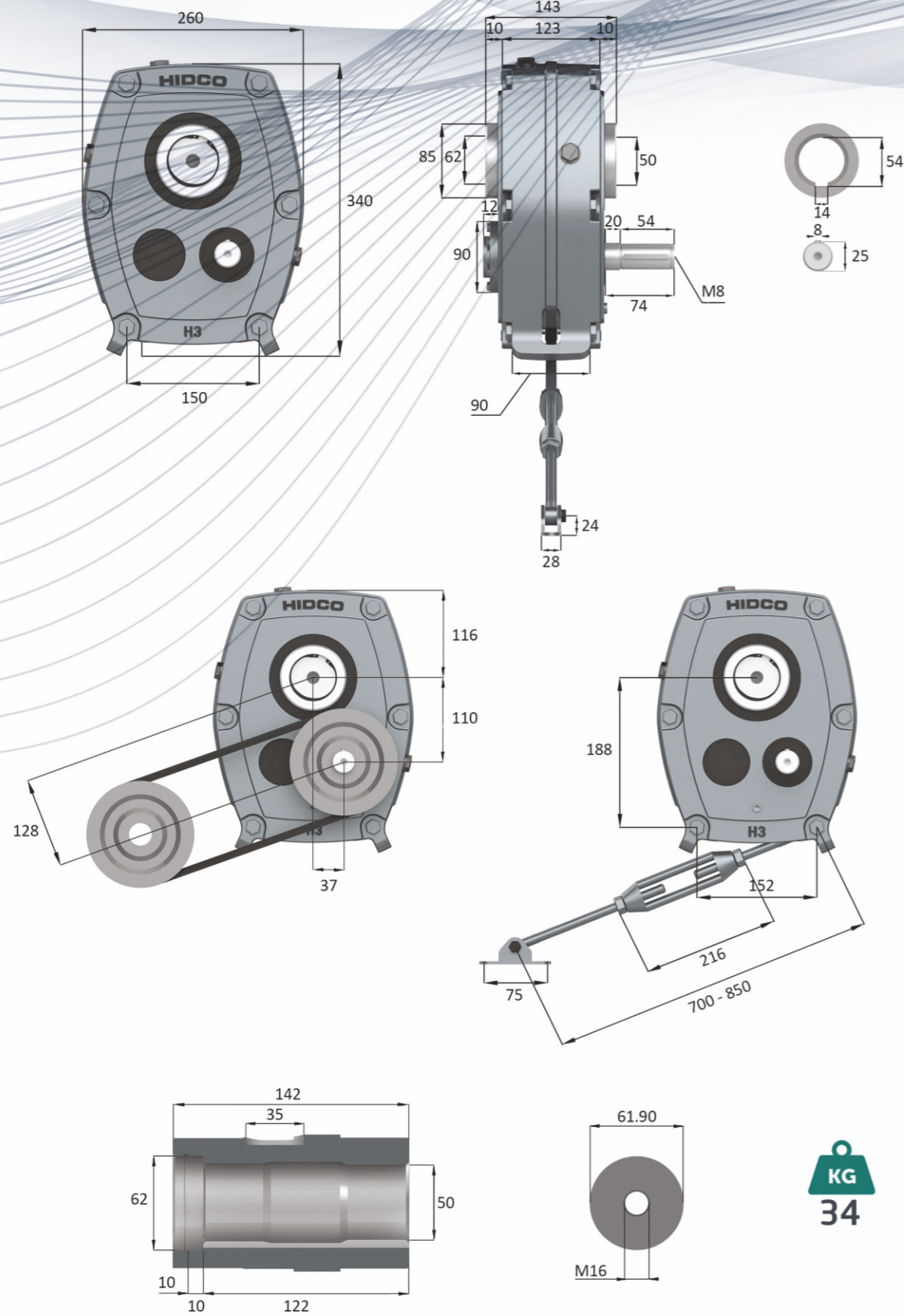
ISO Viskozite Notu ISO Viscosity Grade	Çevre Sıcaklığı Environment Temperature	0-20 rpm		21-50 rpm		
		2-3-4-5-6-7	2-3	4-5-6-7	2-3	4-5-6-7
-10 to +5		150	150	150	100	100
6 to 25		680	680	460	460	320
26 to 40		800	800	800	680	460

Tahrik Edilen Makine Tipleri Types of Driven Machine	Günlük Çalışma Saatleri - Operational Hours Per Day		
	10 Saat Altı Below 10 hours	10 - 16 Saat Arası Between 10-16 hours	16 Saat Üstü Above 16 hours
DÜZENLİ YÜK / UNIFORM LOAD Şişeleme Makineleri / Bottling Machine Ocaklar / Ovens Tel Çekme Makineleri / Wire drawing machines Sabit Yüklü Taşıyıcılar / fixed load carrier Sıvı veya Yarı Sıvı Karıştırıcılar / Liquid and Semi Liquid Mixers Transmisyon Milleri / Transmission Shafts Çamaşır Yıkama Makineleri / Washing Machines	1,0	1,12	1,25
ORTA DARBELİ YÜK / MEDIUM PULSED LOAD Kaldırma Makineleri / Lifting Machines Hadde Tezgahları / Rolling Machines Kurutma Fırınları / Drying Stove Döner Elekler / Rotary Screens Dokuma Tezgahları / Weaving Machines Kağıt Hamur Makinaları / Pulp Machines Değişken Yoğunluk Karıştırıcılar / Variable Density Mixers Konveyörler / Conveyors Ağır Yük Asansörleri / Heavy Load Elevators Islak Presler / Wet Pressing Machines Kauçuk Mikserleri / Small Mixers Hallaç Makineleri / Fluffer Machines Kurutma Silindirleri / Drying Cylinders	1,25	1,40	1,60
DARBELİ YÜK / PULSED LOAD Vibratörler / Vibrators Kırıcılar / Breaking Machines Tuğla Presi / Brick Press Çekişli Değirmenler / Hammer Mill Dövücü Değirmenler / Forging Mills Briquet Makinesi / Briquette Machine Ekstrüderler / Extruders	1,60	1,80	2,0

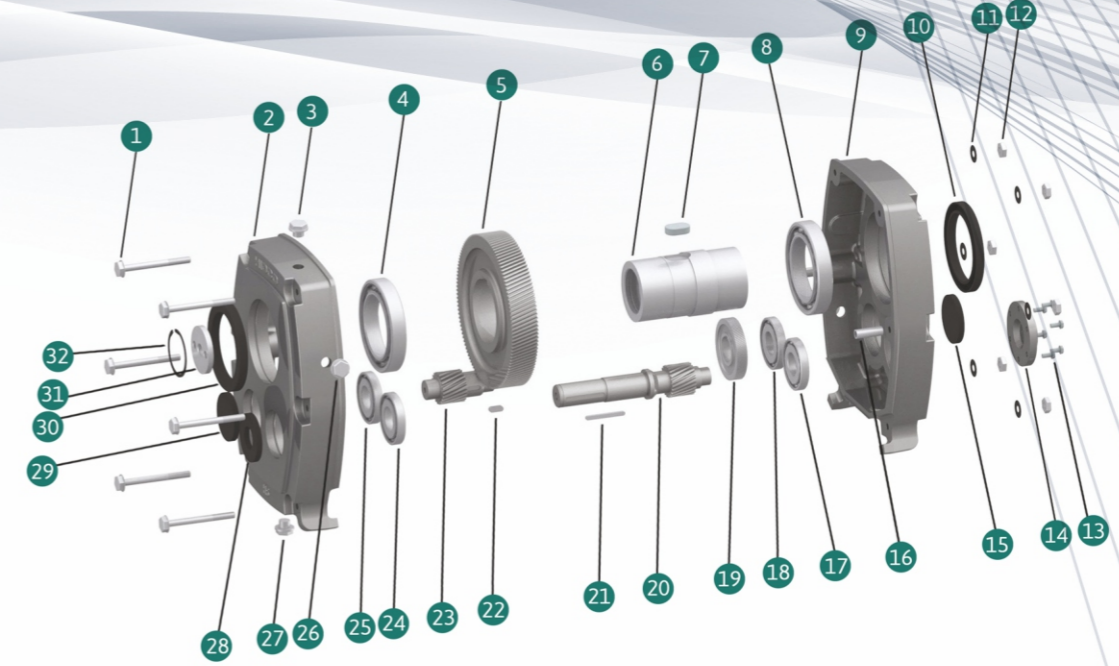
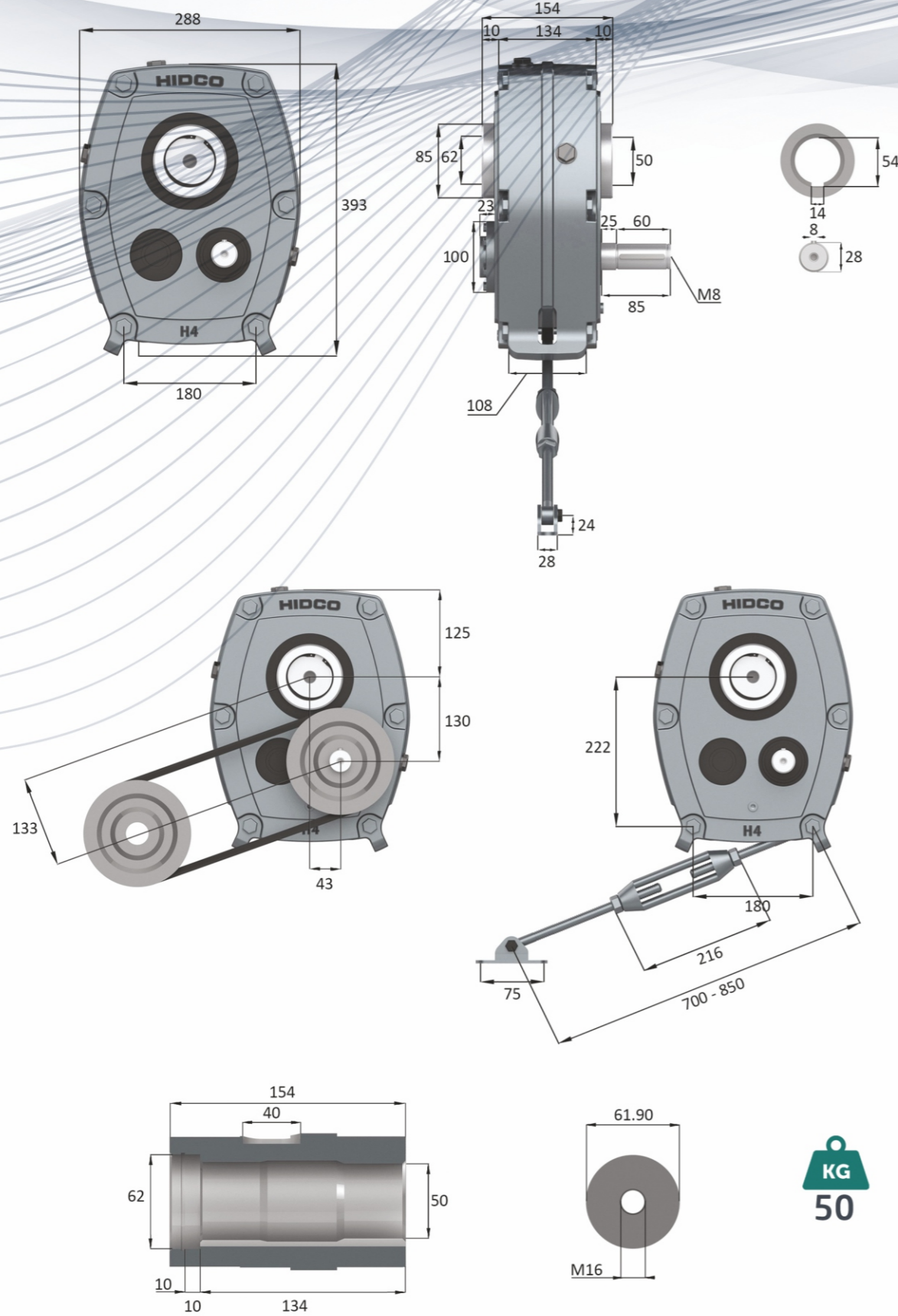
Çıkış Devri / Output Rpm	H2 13 / 20	H3 13 / 20	H4 13 / 20	H5 13 / 20	H6 13 / 20	H7 13 / 20
10	0.29	0.49	0.82	1.25	1.97	3.11
12	0.36	0.58	0.96	1.48	2.45	3.71
14	0.42	0.67	1.11	1.73	2.71	4.30
16	0.47	0.77	1.27	1.97	3.09	4.89
18	0.53	0.86	1.41	2.20	3.44	5.48
20	0.59	0.96	1.58	2.43	3.82	6.08
22	0.63	1.04	1.73	2.67	4.18	6.63
24	0.69	1.13	1.86	2.89	4.55	7.22
26	0.75	1.22	2.02	3.13	4.91	7.79
28	0.81	1.32	2.18	3.36	5.27	8.35
30	0.86	1.41	2.32	3.58	5.63	8.92
32	0.92	1.50	2.47	3.81	5.98	9.49
34	0.98	1.60	2.63	4.04	6.34	10.04
38	1.10	1.79	2.91	4.48	7.05	11.12
40	1.16	1.87	3.07	4.71	7.41	11.87
42	1.20	1.96	3.19	4.92	7.75	12.39
46	1.30	2.13	3.48	5.37	8.28	13.65
50	1.42	2.30	3.78	5.81	9.07	14.60
52	1.47	2.37	4.00	6.03	9.14	15.23
54	1.52	2.47	4.14	6.23	9.42	15.86
58	1.64	2.61	4.43	6.66	10.02	16.80
62	1.76	2.77	4.71	7.23	10.61	17.96
66	1.86	2.94	5.01	7.68	11.24	19.01
70	1.96	3.07	5.13	8.11	11.76	20.16
74	2.06	3.18	5.42	8.54	12.39	21.11
78	2.15	3.32	5.70	8.97	12.92	22.26
80	2.23	3.39	5.81	9.19	13.23	22.47
85	2.34	3.58	6.14	9.71	13.97	23.31
90	2.48	3.79	6.49	10.24	14.60	24.57
95	2.61	4.00	6.81	10.50	15.44	25.83
100	2.73	4.19	7.15	11.03	16.17	27.09
105	2.85	4.41	7.48	11.55	17.01	
110	2.98	4.62	7.81			
115	3.11					
d/d göre çıkış torku / output torque rpm	277	468	783	1194	1881	2970



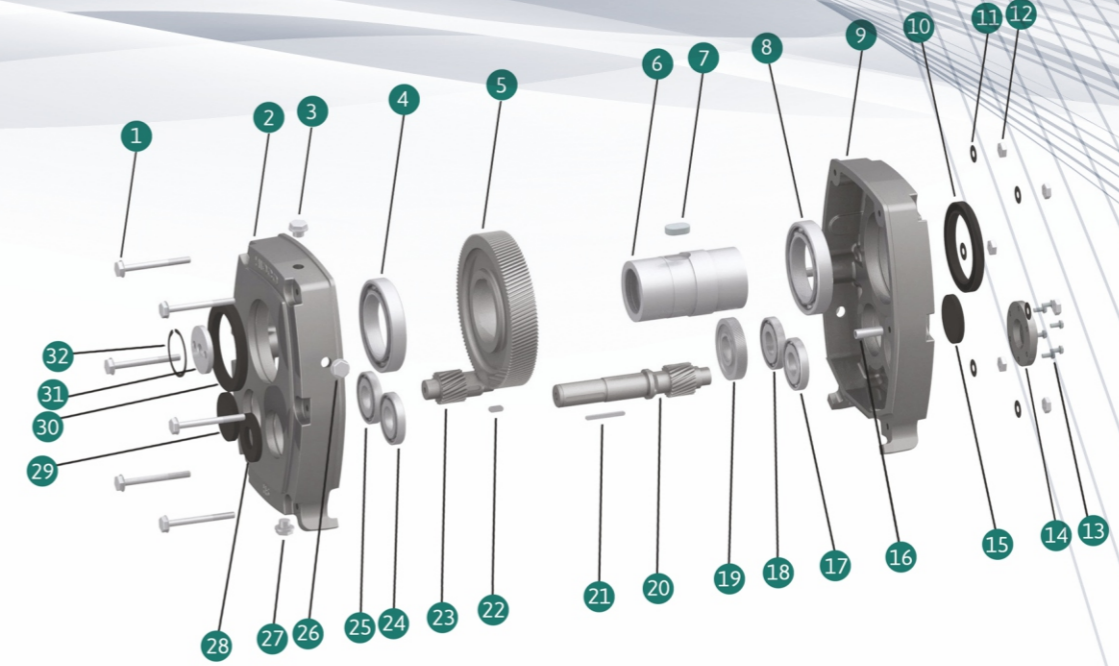
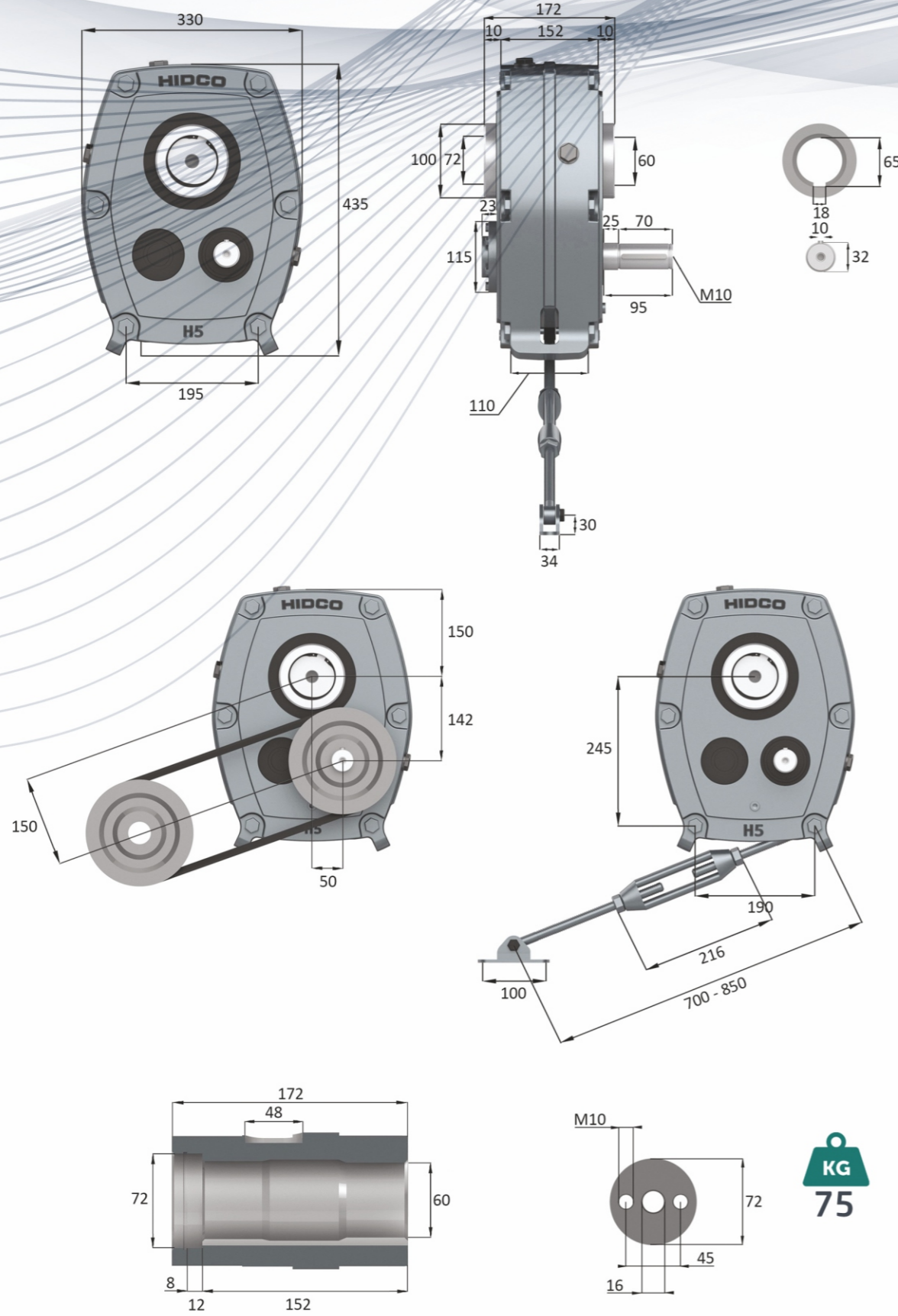
1 M10X100 CİVATA	17 6205 NJ RULMAN	1 M10X100 BOLT	17 6205 NJ BEARING
2 REDÜKTÖR GÖVDESİ	18 6304 RULMAN	2 REDUCER BODY	18 6304 BEARING
3 YAĞ TAPASI	19 PİNYON KARŞILIĞI DİŞLİSİ	3 OIL PLUG	19 Z2 GEAR
4 6013 RULMAN	20 PİNYON DİŞLİSİ	4 6013 BEARING	20 Z1 GEAR
5 ÇIKIŞ DİŞLİSİ	21 32X6X6 KAMA	5 Z4 GEAR	21 32X6X6 KEY
6 ÇIKIŞ MİLİ	22 KAMA	6 INTRODUCTION SHAFT	22 KEY
7 KAMA	23 2.PİNYON DİŞLİSİ	7 KEY	23 Z3 GEAR
8 6013 RULMAN	24 6304 RULMAN	8 6013 BEARING	24 6304 BEARING
9 REDÜKTÖR GÖVDESİ	25 6304 RULMAN	9 REDUCER BODY	25 6304 BEARING
10 65X90X10 KEÇE	26 YAĞ TAPASI	10 65X90X10 OIL SEAL	26 OIL PLUG
11 M10 RONDELA	27 YAĞ TAPASI	11 M10 STAMP	27 OIL PLUG
12 M10 SOMUN	28 25X47X10 KEÇE	12 M10 BOLT NUT	28 25X47X10 OIL SEAL
13 M5 CİVATA	29 47X7 TAPA KEÇE	13 M5 BOLT	29 47X7 OIL SEAL
14 KAPAK / KİLİT	30 65X90X10 KEÇE	14 COVER / BACKSTOP	30 65X90X10 OIL SEAL
15 47X7 TAPA	31 ÇEKTİRME	15 47X7 OIL SEAL	31 OUTPUT SHAFT
16 MERKEZLEME PİMİ	32 SEGMAN	16 PERFORATED PIN	32 CIRCLIP



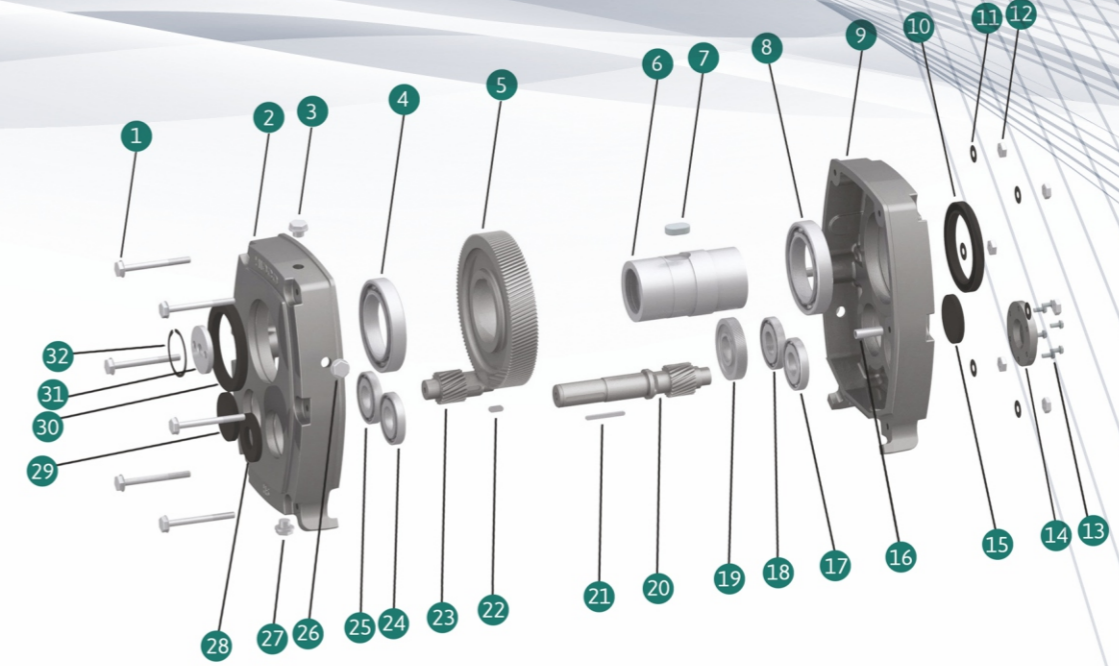
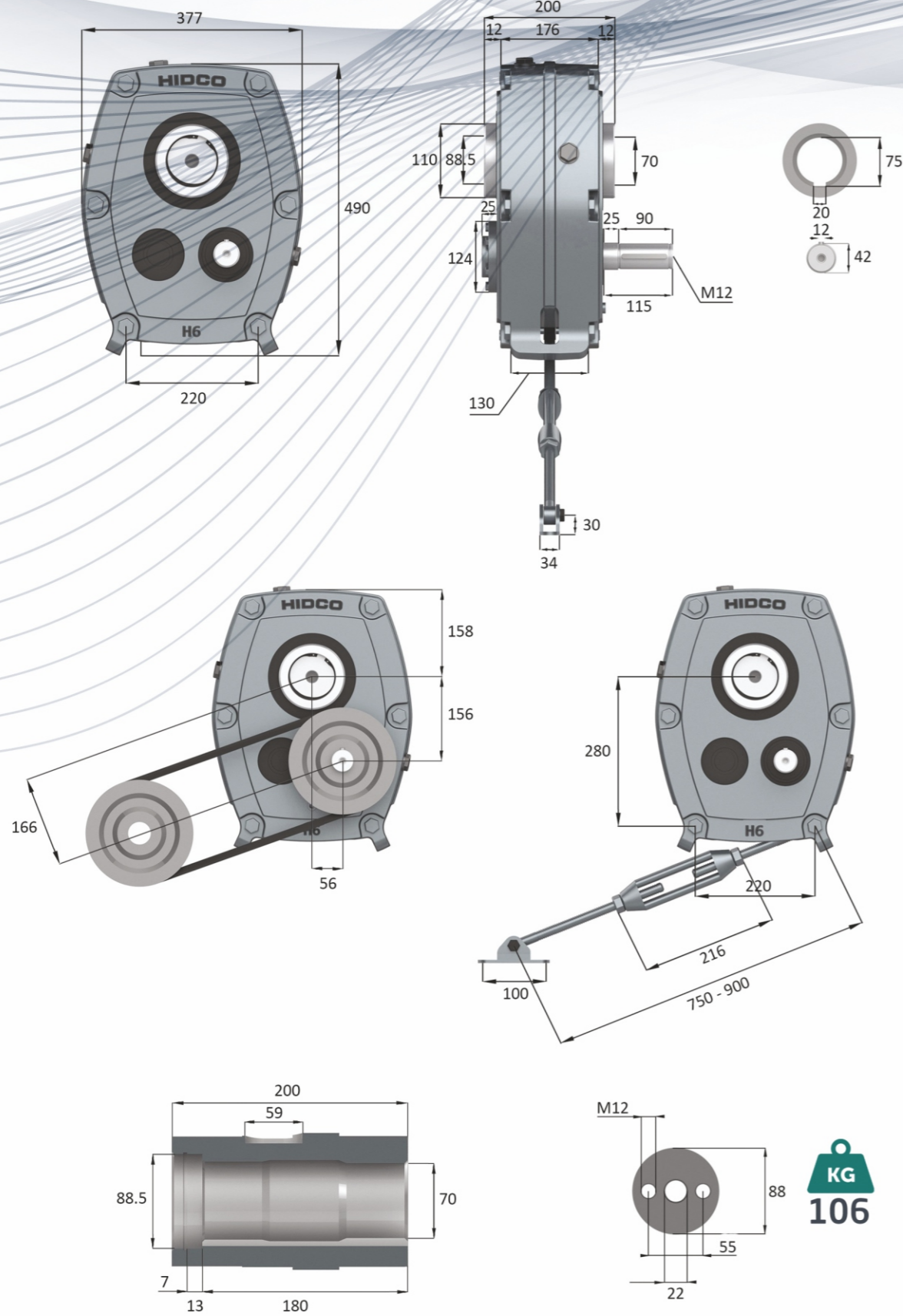
1 M10X110 CİVATA	17 6206 NJ RULMAN	1 M10X110 BOLT	17 6206 NJ BEARING
2 REDÜKTÖR GÖVDESİ	18 6305 RULMAN	2 REDUCER BODY	18 6206 BEARING
3 YAĞ TAPASI	19 PİNYON KARŞILIĞI DİŞLİSİ	3 OIL PLUG	19 Z2 GEAR
4 6015 RULMAN	20 PİNYON DİŞLİSİ	4 6015 BEARING	20 Z1 GEAR
5 ÇIKIŞ DİŞLİSİ	21 40X8X7 KAMA	5 Z4 GEAR	21 40X8X7 KEY
6 ÇIKIŞ MİLİ	22 KAMA	6 OUTPUT SHAFT	22 KEY
7 KAMA	23 2.PİNYON	7 KEY	23 Z3 GEAR
8 6015 RULMAN	24 6305 RULMAN	8 6015 BEARING	24 6305 BEARING
9 REDÜKTÖR GÖVDESİ	25 6305 RULMAN	9 REDUCER BODY	25 6305 BEARING
10 75X10X10 KEÇE	26 YAĞ TAPASI	10 75X10X10 OIL SEAL	26 OIL PLUG
11 M10 RONDELA	27 YAĞ TAPASI	11 M10 STAMP	27 OIL PLUG
12 M10 SOMUN	28 57X30X10 KEÇE	12 M10 BOLT NUT	28 57X30X10 OIL SEAL
13 M6 CİVATA	29 57X10 TAPA KEÇE	13 M6 BOLT	29 57X10 OIL SEAL
14 KAPAK / KİLİT	30 75X10X10 KEÇE	14 COVER / BACKSTOP	30 75X10X10 OIL SEAL
15 57X10 TAPA KEÇE	31 ÇEKTİRME	15 57X10 OIL SEAL	31 OUTPUT SHAFT
16 MERKEZLEME PİMİ	32 SEGMAN	16 PERFORATED PIN	32 CIRCLIP



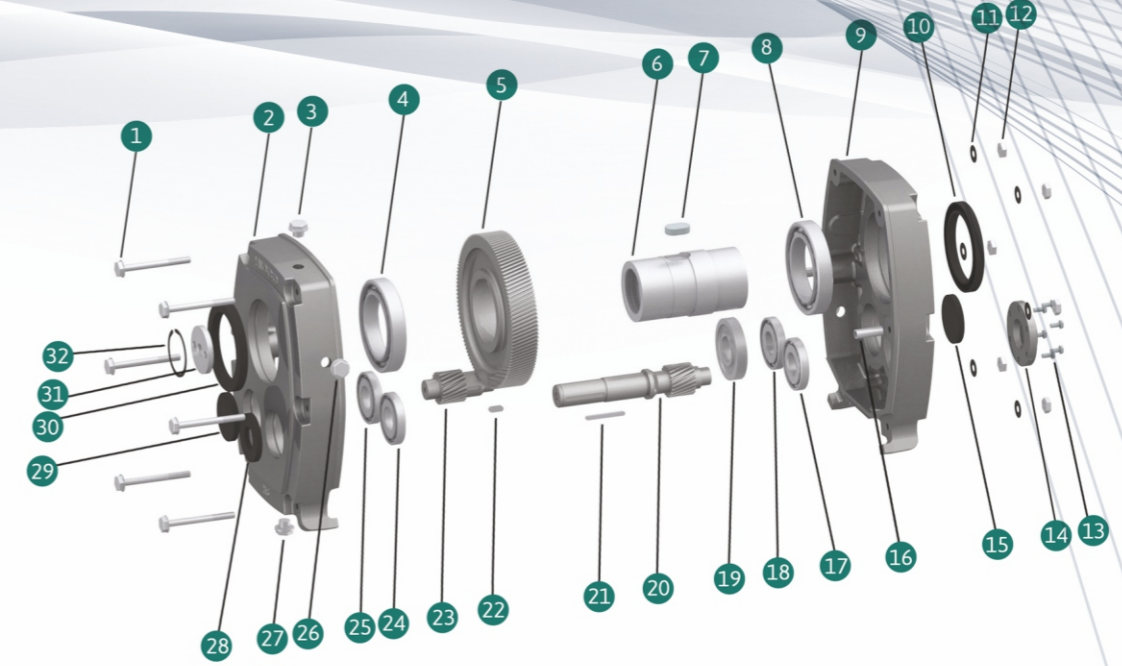
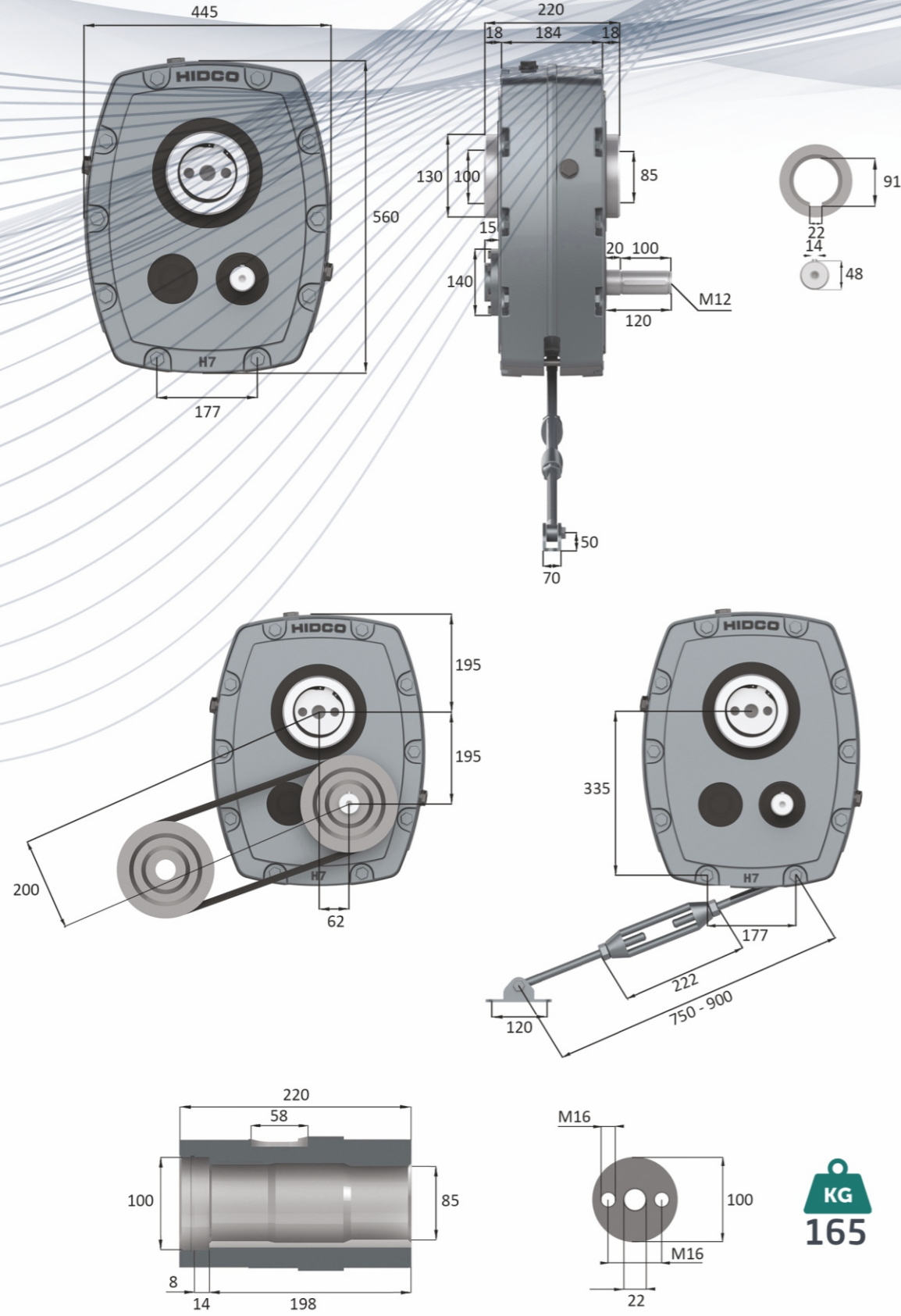
1 M12X130 CİVATA	17 6306 NJ RULMAN	1 M12X130 BOLT	17 6306 NJ BEARING
2 REDÜKTÖR GÖVDESİ	18 6306 RULMAN	2 REDUCER BODY	18 6306 BEARING
3 YAĞ TAPASI	19 PİNYON KARŞILIĞI DİŞLİSİ	3 OIL PLUG	19 Z2 GEAR
4 6017 RULMAN	20 PİNYON DİŞLİSİ	4 6017 BEARING	20 Z1 GEAR
5 ÇIKIŞ DİŞLİSİ	21 50X8X7 KAMA	5 Z4 GEAR	21 50X8X7 KEY
6 ÇIKIŞ MİLİ	22 KAMA	6 OUTPUT SHAFT	22 KEY
7 KAMA	23 2.PİNYON	7 KEY	23 Z3 GEAR
8 6017 RULMAN	24 6306 RULMAN	8 6017 BEARING	24 6306 BEARING
9 REDÜKTÖR GÖVDESİ	25 6306 RULMAN	9 REDUCER BODY	25 6306 BEARING
10 85x120x13 KEÇE	26 YAĞ TAPASI	10 85x120x13 OIL SEAL	26 OIL PLUG
11 M12 RONDELA	27 YAĞ TAPASI	11 M12 STAMP	27 OIL PLUG
12 M12 SOMUN	28 30X65X10 KEÇE	12 M12 BOLT NUT	28 30X65X10 OIL SEAL
13 M6 CİVATA	29 65X10 TAPA KEÇE	13 M6 BOLT	29 65X10 OIL SEAL
14 KAPAK / KİLİT	30 85X120X13 KEÇE	14 COVER / BACKSTOP	30 85X120X13 OIL SEAL
15 65x10 TAPA KEÇE	31 ÇEKTİRME	15 65X10 OIL SEAL	31 OUTPUT SHAFT
16 MERKEZLEME PİMİ	32 SEGMAN	16 PERFORATED PIN	32 CIRCLIP



1 M16X140 CİVATA	17 6307 NJ RULMAN	1 M16X140 BOLT	17 6307 NJ BEARING
2 REDÜKTÖR GÖVDESİ	18 6307 RULMAN	2 REDUCER BODY	18 6307 BEARING
3 YAĞ TAPASI	19 PİNYON KARŞILIĞI DİŞLİSİ	3 OIL PLUG	19 Z2 GEAR
4 6020 RULMAN	20 PİNYON DİŞLİSİ	4 6020 BEARING	20 Z1 GEAR
5 ÇIKIŞ DİŞLİSİ	21 55X10X8 KAMA	5 Z4 GEAR	21 55X10X8 KEY
6 ÇIKIŞ MİLİ	22 KAMA	6 OUTPUT SHAFT	22 KEY
7 KAMA	23 2.PİNYON	7 KEY	23 Z3 GEAR
8 6020 RULMAN	24 6307 RULMAN	8 6020 BEARING	24 6307 BEARING
9 REDÜKTÖR GÖVDESİ	25 6307 RULMAN	9 REDUCER BODY	25 6307 BEARING
10 100X140X13 KEÇE	26 YAĞ TAPASI	10 100X140X13 OIL SEAL	26 OIL PLUG
11 M16 RONDELA	27 YAĞ TAPASI	11 M16 STAMP	27 OIL PLUG
12 M16 SOMUN	28 35X72X10 KEÇE	12 M16 BOLT NUT	28 35X72X10 OIL SEAL
13 M8 CİVATA	29 72X10 TAPA KEÇE	13 M8 BOLT	29 72X10 OIL SEAL
14 KAPAK / KİLİT	30 100X140X13 KEÇE	14 COVER / BACKSTOP	30 100X140X13 OIL SEAL
15 72X10 TAPA KEÇE	31 ÇEKTİRME	15 72X10 OIL SEAL	31 OUTPUT SHAFT
16 MERKEZLEME PİMİ	32 SEGMAN	16 PERFORATED PIN	32 CIRCLIP



1 M16X150 CİVATA	17 6309 NJ RULMAN	1 M16X150 BOLT	17 6309 NJ BEARING
2 REDÜKTÖR GÖVDESİ	18 6309 RULMAN	2 REDUCER BODY	18 6309 BEARING
3 YAĞ TAPASI	19 PİNYON KARŞILIĞI DŞ. - Z2	3 OIL PLUG	19 Z2 GEAR
4 6022 RULMAN	20 PİNYON DİŞLİSİ - Z1	4 6022 BEARING	20 Z1 GEAR
5 ÇIKIŞ DİŞLİSİ - Z4	21 68X12X10 KAMA	5 Z4 GEAR	21 68X12X10 KEY
6 ÇIKIŞ MİLİ	22 KAMA	6 OUTPUT SHAFT	22 KEY
7 KAMA	23 2.PİNYON - Z33	7 KEY	23 Z3 GEAR
8 6022 RULMAN	24 6309 RULMAN	8 6022 BEARING	24 6309 BEARING
9 REDÜKTÖR GÖVDESİ	25 6309 RULMAN	9 REDUCER BODY	25 6309 BEARING
10 110X160X13 KEÇE	26 YAĞ TAPASI	10 110X160X13 OIL SEAL	26 OIL PLUG
11 M16 RONDELA	27 YAĞ TAPASI	11 M16 STAMP	27 OIL PLUG
12 M16 SOMUN	28 45x90x10 KEÇE	12 M16 BOLT NUT	28 45x90x10 OIL SEAL
13 M8 CİVATA	29 90x10 TAPA KEÇE	13 M8 BOLT	29 90x10 TAPA OIL SEAL
14 KAPAK / KİLİT	30 110X160X13 KEÇE	14 COVER / BACKSTOP	30 110X160X13 OIL SEAL
15 90X10 TAPA KEÇE	31 ÇEKTİRME	15 90X10 OIL SEAL	31 OUTPUT SHAFT
16 MERKEZLEME PİMİ	32 SEGMAN	16 PERFORATED PIN	32 CIRCLIP



1 M10X185 CİVATA	17 6310 NJ RULMAN	1 M10X185 BOLT	17 6310 NJ BEARING
2 REDÜKTÖR GÖVDESİ	18 6310 RULMAN	2 REDUCER BODY	18 6310 BEARING
3 YAĞ TAPASI	19 PİNYON KARŞILIĞI DŞ. - Z2	3 OIL PLUG	19 Z2 GEAR
4 6026 RULMAN	20 PİNYON DİŞLİSİ - Z1	4 6026 BEARING	20 Z1 GEAR
5 ÇIKIŞ DİŞLİSİ - Z4	21 KAMA	5 Z4 GEAR	21 KEY
6 ÇIKIŞ MİLİ	22 KAMA	6 OUTPUT SHAFT	22 KEY
7 KAMA	23 2.PİNYON - Z3	7 KEY	23 Z3 GEAR
8 6026 RULMAN	24 6310 RULMAN	8 6026 BEARING	24 6310 BEARING
9 REDÜKTÖR GÖVDESİ	25 6310 RULMAN	9 REDUCER BODY	25 6310 BEARING
10 130X170X13 KEÇE	26 YAĞ TAPASI	10 130X170X13 OIL SEAL	26 OIL PLUG
11 M10 RONDELA	27 YAĞ TAPASI	11 M10 STAMP	27 OIL PLUG
12 M10 SOMUN	28 50X90X10 KEÇE	12 M10 BOLT NUT	28 50X90X10 OIL SEAL
13 M8 CİVATA	29 90x10 TAPA KEÇE	13 M8 BOLT	29 90x10 TAPA OIL SEAL
14 KAPAK / KİLİT	30 130X170X13 KEÇE	14 COVER / BACKSTOP	30 130X170X13 OIL SEAL
15 90X10 TAPA KEÇE	31 ÇEKTİRME	15 90X10 OIL SEAL	31 OUTPUT SHAFT
16 MERKEZLEME PİMİ	32 SEGMAN	16 PERFORATED PIN	32 CIRCLIP

1440rpm Motors

Tahvil Ratio	Nominal Çıkış Devri Nominal Output rpm	Kasnak Tahvil Oranı Pulley Ratio	Kasnak Çapları (mm) Pulley Pitch Diameters (mm)		Kayış Numarası Number of Belts
			Motor	Reducer	
1/20	10	6.67	75	500	1SPZ
	12	5.63	71	400	1SPZ
	14	5.00	63	315	1SPZ
	16	4.20	75	315	1SPZ
	18	3.73	75	280	1SPZ
	20	3.50	90	315	1SPZ
	22	3.13	80	250	1SPZ
	24	2.82	71	200	1SPZ
	26	2.63	95	250	1SPA
	27	2.52	63	160	1SPZ
	30	2.25	71	160	1SPZ
	32	2.13	75	160	1SPZ
	34	2.00	80	160	1SPZ
	36	1.88	80	150	1SPZ
	38	1.80	100	180	1SPZ
	39	1.76	71	125	1SPZ
	41	1.67	75	125	1SPZ
	44	1.56	90	140	1SPZ
	46	1.49	75	112	1SPZ
	49	1.41	71	100	1SPZ
52	1.33	75	100	1SPZ	
55	1.24	90	112	1SPZ	
57	1.20	75	90	1SPZ	
60	1.14	140	160	1SPZ	
64	1.07	140	150	1SPZ	
1/13	66	1.56	90	140	1SPZ
	69	1.50	100	150	1SPZ
	70	1.47	85	125	1SPA
	72	1.43	140	200	1SPZ
	74	1.39	90	125	1SPZ
	76	1.36	118	160	1SPA
	77	1.34	112	150	1SPZ
	78	1.32	95	125	1SPA
	80	1.29	140	180	1SPZ
	83	1.24	90	112	1SPZ
	85	1.21	132	160	1SPA
	87	1.18	95	112	1SPA
	90	1.14	140	160	1SPZ
	92	1.12	125	140	1SPZ
	97	1.06	132	140	1SPZ
	103	1.00	112	112	1SPZ
	108	0.95	118	112	1SPA
	110	0.94	106	100	1SPA
114	0.90	125	112	1SPA	

1440rpm Motors

Tahvil Ratio	Nominal Çıkış Devri Nominal Output rpm	Kasnak Tahvil Oranı Pulley Ratio	Kasnak Çapları (mm) Pulley Pitch Diameters (mm)		Kayış Numarası Number of Belts
			Motor	Reducer	
1/20	10	7.04	71	500	1SPZ
	12	5.63	71	400	1SPZ
	13	5.33	75	400	1SPZ
	15	4.73	75	355	1SPZ
	16	4.44	71	315	1SPZ
	18	3.94	80	315	1SPZ
	20	3.50	90	315	1SPZ
	22	3.13	80	250	1SPZ
	23	3.11	90	280	1SPZ
	25	2.78	90	250	1SPZ
	29	2.40	75	180	1SPZ
	33	2.13	75	160	1SPZ
	35	2.00	80	160	1SPZ
	37	1.88	85	160	1SPA
	40	1.75	80	140	1SPZ
	43	1.65	85	140	1SPA
	45	1.56	90	140	1SPZ
	47	1.50	100	150	1SPA
	51	1.39	90	125	1SPA
	53	1.33	75	100	1SPZ
55	1.27	71	90	1SPZ	
59	1.19	80	95	1SPA	
63	1.12	85	95	1SPA	
66	1.07	140	150	1SPZ	
1/13	68	1.56	80	125	1SPA
	70	1.52	132	200	1SPZ
	72	1.47	95	140	1SPA
	74	1.43	140	200	1SPZ
	78	1.36	132	180	1SPA
	80	1.32	106	140	1SPA
	82	1.29	140	180	1SPZ
	85	1.24	90	112	1SPZ
	88	1.21	132	160	1SPA
	90	1.18	95	112	1SPA
	93	1.14	140	160	1SPZ
	95	1.12	118	132	1SPA
	100	1.06	132	140	1SPA
	106	1.00	132	132	1SPA
	111	0.95	100	95	1SPA

1440rpm Motors

Tahvil Ratio	Nominal Çıkış Devri Nominal Output rpm	Kasnak Tahvil Oranı Pulley Ratio	Kasnak Çapları (mm) Pulley Pitch Diameters (mm)		Kayış Numarası Number of Belts
			Motor	Reducer	
1/20	10	7.04	71	500	1SPZ
	13	5.63	71	400	1SPZ
	14	5.00	63	315	1SPZ
	16	4.44	71	315	1SPZ
	18	3.97	63	250	2SPZ
	20	3.52	71	250	2SPZ
	22	3.13	80	250	1SPZ
	24	2.94	85	250	1SPA
	27	2.63	95	250	1SPA
	28	2.50	100	250	1SPZ
	30	2.35	85	200	1SPA
	32	2.22	90	200	2SPZ
	33	2.11	95	200	1SPA
	37	1.89	95	180	1SPA
	39	1.80	100	180	1SPA
	40	1.75	80	140	2SPZ
	41	1.70	106	180	1SPA
	44	1.61	112	180	1SPA
	47	1.50	100	150	1SPA
	49	1.44	125	180	1SPZ
	50	1.42	106	150	2SPA
	52	1.36	118	160	1SPA
	53	1.32	106	140	2SPA
	56	1.25	112	140	2SPA
	59	1.20	125	150	1SPA
	60	1.18	85	100	2SPA
	63	1.12	118	132	2SPA
63	1.11	90	100	3SPZ	
66	1.07	140	150	1SPA	
67	1.58	200	315	1SPA	
70	1.52	132	200	1SPA	
72	1.47	95	140	2SPA	
74	1.43	140	200	2SPA	
78	1.36	132	180	2SPA	
80	1.32	106	140	2SPA	
82	1.29	140	180	1SPA	
85	1.25	160	200	1SPA	
88	1.21	132	160	2SPA	
90	1.18	95	112	2SPA	
93	1.14	140	160	2SPZ	
95	1.11	180	200	1SPA	
99	1.07	150	160	2SPA	
101	1.05	95	100	2SPA	
106	1.00	125	125	2SPZ	

1440rpm Motors

Tahvil Ratio	Nominal Çıkış Devri Nominal Output rpm	Kasnak Tahvil Oranı Pulley Ratio	Kasnak Çapları (mm) Pulley Pitch Diameters (mm)		Kayış Numarası Number of Belts
			Motor	Reducer	
1/20	10	7.04	71	500	1SPZ
	13	5.63	71	400	2SPZ
	14	5.00	80	400	1SPZ
	16	4.44	90	400	1SPZ
	18	4.00	100	400	1SPZ
	20	3.50	90	315	2SPZ
	22	3.15	100	315	1SPZ
	25	2.82	71	200	2SPZ
	26	2.67	75	200	2SPZ
	28	2.50	100	250	2SPZ
	29	2.40	75	180	3SPZ
	31	2.25	80	180	3SPZ
	33	2.11	71	150	3SPZ
	35	2.00	80	160	3SPZ
	37	1.88	85	160	2SPA
	40	1.75	80	140	3SPZ
	42	1.68	95	160	1SPA
	44	1.60	125	200	2SPZ
	46	1.52	132	200	1SPA
	49	1.44	125	180	2SPZ
	50	1.40	100	140	2SPA
	52	1.36	132	180	2SPA
	55	1.29	140	180	2SPZ
	56	1.25	100	125	3SPZ
	59	1.20	150	180	1SPA
	60	1.18	106	125	2SPA
	62	1.14	140	160	2SPZ
	63	1.11	90	100	4SPZ
	66	1.06	118	125	2SPA
	70	1.52	132	200	2SPZ
	74	1.44	125	180	2SPA
	76	1.39	180	250	1SPA
	78	1.36	118	160	2SPA
80	1.32	100	132	3SPA	
82	1.29	140	180	2SPA	
85	1.24	90	112	5SPZ	
88	1.21	132	160	2SPA	
90	1.18	95	112	4SPA	
93	1.14	140	160	2SPA	
95	1.12	125	140	3SPZ	
100	1.06	132	140	2SPA	
106	1.00	125	125	3SPZ	

1440rpm Motors

Tahvil Ratio	Nominal Çıkış Devri Nominal Output rpm	Kasnak Tahvil Oranı Pulley Ratio	Kasnak Çapları (mm) Pulley Pitch Diameters (mm)		Kayış Numarası Number of Belts
			Motor	Reducer	
1/20	10	7.04	71	500	2SPZ
	13	5.63	71	400	2SPZ
	14	5.00	100	500	1SPA
	17	4.20	75	315	2SPZ
	18	3.94	80	315	2SPZ
	19	3.77	106	400	1SPA
	20	3.57	112	400	1SPA
	22	3.20	125	400	1SPA
	25	2.86	140	400	1SPA
	26	2.67	118	315	2SPZ
	28	2.50	160	400	1SPZ
	30	2.35	85	200	2SPA
	33	2.12	85	180	2SPA
	35	2.00	125	250	2SPZ
	37	1.89	95	180	2SPA
	40	1.75	180	315	1SPA
	42	1.68	95	160	3SPA
	44	1.60	125	200	2SPA
	45	1.58	200	315	1SPA
	49	1.44	125	180	2SPA
50	1.40	100	140	3SPA	
52	1.36	118	160	2SPA	
55	1.29	140	180	2SPZ	
56	1.25	100	125	4SPZ	
59	1.20	125	150	3SPA	
60	1.18	106	125	3SPA	
62	1.14	132	150	2SPA	
63	1.11	106	118	3SPA	
66	1.07	150	160	2SPA	
67	1.58	200	315	2SPZ	
70	1.52	132	200	2SPA	
72	1.48	160	236	2SPB	
74	1.43	140	200	2SPB	
76	1.39	180	250	3SPA	
78	1.36	118	160	3SPA	
80	1.33	150	200	2SPA	
82	1.29	140	180	2SPB	
88	1.20	150	180	2SPB	
88	1.21	132	160	2SPA	
93	1.14	132	150	3SPA	
93	1.14	140	160	3SPA	
95	1.12	125	140	4SPA	
100	1.06	132	140	3SPA	
106	1.00	125	125	4SPA	

1440rpm Motors

Tahvil Ratio	Nominal Çıkış Devri Nominal Output rpm	Kasnak Tahvil Oranı Pulley Ratio	Kasnak Çapları (mm) Pulley Pitch Diameters (mm)		Kayış Numarası Number of Belts
			Motor	Reducer	
1/20	10	7.04	71	500	3SPZ
	12	5.94	106	630	2SPA
	14	5.04	125	630	1SPA
	16	4.44	90	400	3SPZ
	18	4.00	100	400	2SPA
	20	3.57	112	400	2SPZ
	22	3.20	125	400	2SPZ
	25	2.86	140	400	2SPZ
	26	2.67	118	315	2SPA
	28	2.50	160	400	2SPZ
	30	2.35	85	200	3SPA
	32	2.23	112	250	3SPZ
	34	2.10	150	315	2SPA
	37	1.89	132	250	2SPA
	40	1.75	180	315	2SPZ
	42	1.67	150	250	2SPA
	46	1.53	118	180	3SPA
	51	1.39	180	250	2SPA
	55	1.28	125	160	4SPA
	58	1.21	132	160	4SPA
62	1.14	132	150	4SPA	
66	1.07	150	160	3SPA	
67	1.58	200	315	2SPA	
70	1.52	132	200	4SPA	
72	1.47	170	250	2SPB	
75	1.41	224	315	2SPB	
78	1.6	132	180	5SPA	
81	1.31	180	236	3SPB	
82	1.29	140	180	4SPA	
85	1.25	200	250	2SPB	
88	1.21	132	160	5SPA	
90	1.18	180	212	3SPB	
93	1.14	140	160	5SPA	
95	1.11	180	200	3SPA	
100	1.06	236	250	2SPB	

Not:

HIDCO[®]
REDÜKTÖR

HIDCO[®]
REDÜKTÖR



Hidco Redüktör ürünlerinin mobil uygulaması
For mobile app of Hidco Reducers



HIDCO[®]
REDÜKTÖR

📍 Selvitepe Mh. Fatih Sanayi Sitesi 115 Sk. No:71 Turgutlu / Manisa

☎ +90 236 314 34 14 📞 +90 236 313 34 14

✉ bilgi@hidco.com.tr 🌐 www.hidco.com.tr

Hidco reduktor bu katalogtaki tüm verilerde değişiklik yapma hakkını saklı tutar.

" Bu Katalog

T.C.Zafer Kalkınma Ajansı'nın desteği " MİKRO İŞLETMELER DE KURUMSAL OLABİLİR VE DÜNYAYA AÇILABİLİR: " HIDCO ÖRNEK OLMAK İSTİYOR " projesi kapsamında hazırlanmıştır. İçerik ile ilgili tek sorumluluk Hidco Redüktör İth. İhr. San. ve Tic. Ltd. Şti'ye aittir ve T.C. Zafer Kalkınma Ajansı'nın görüşlerini yansıtmaz. "



Zafer
Kalkınma Ajansı
Development Agency