



TAMUTOM

ICE MACHINE by ROSEN CO.





Briefly Rosen,

Our story , which started at 2006 in a small office, continues today in a large factory where we produce. We exported the ice machines to 88 countries. Rosen is the pioneer and unique company in Turkey in concrete cooling systems. It has taken a solid place in the global market with the ice machines and ice storage systems developed by its engineers. Today, Rosen is competing with world giants.

Rosen has supplied ice machines to high importance projects such as dam constructions, highways, bridge constructions, airport constructions and nuclear power plant constructions.

With its young and dynamic team, Rosen continues to grow with firm steps by constantly improving itself.

Mustafa GÖĞCÜ
General Manager

CONTENTS

CONTENTS

BLOCK ICE MACHINES



6-27

CUBE ICE MACHINES



28-37

FLAKE ICE MACHINES

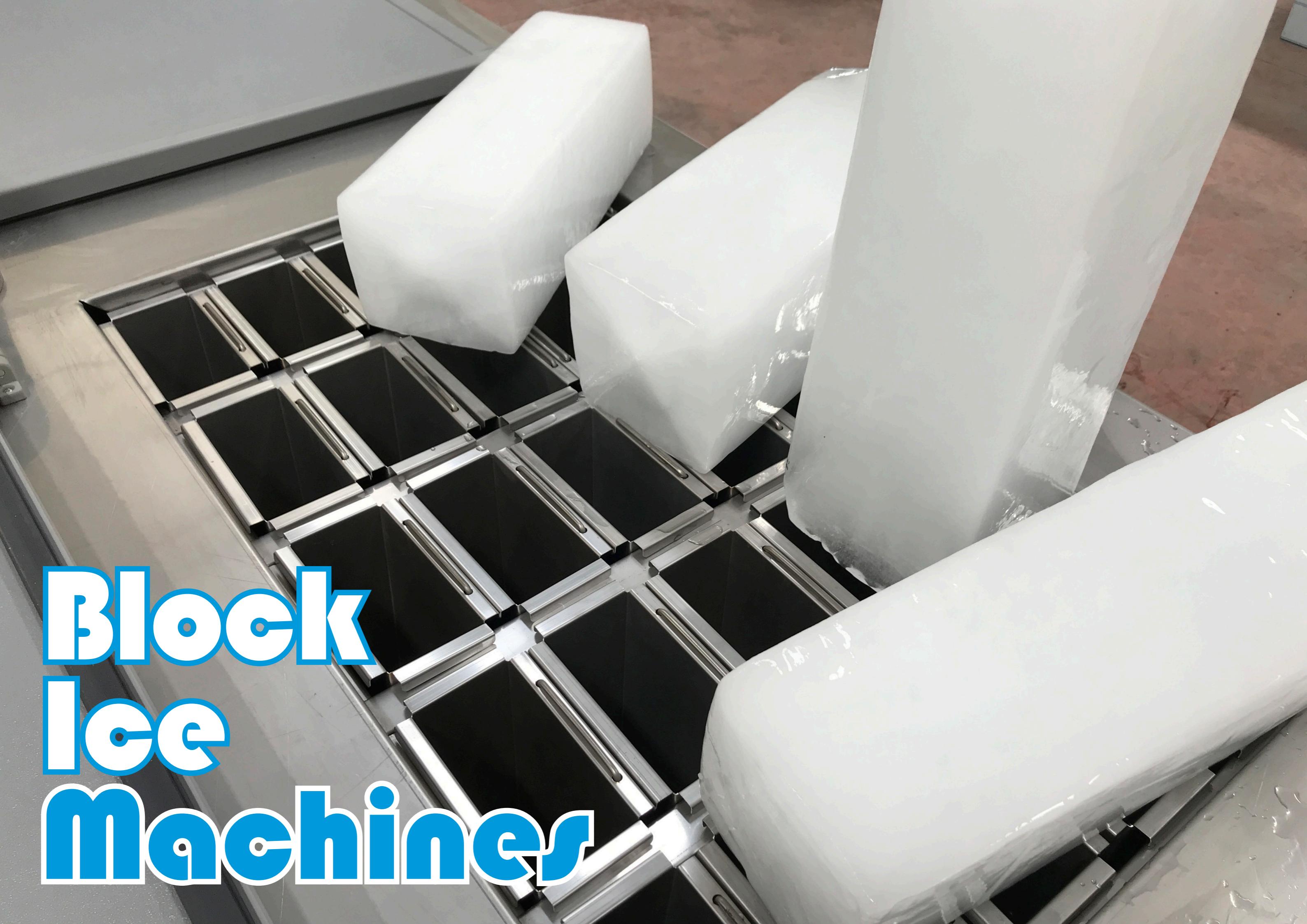


38-53

TUBE ICE MACHINES



54-61



Block Ice Machines

Applications of Block Ice Machines

- It is the oldest type of ice used for many jobs in many countries of the world. The favorite machine of those who want to trade ice is the Block Ice Machines.
- **Ice Business:** Large-capacity machines are preferred, daily ice sales transactions are carried out by production.
- **Concrete Cooling Project:** Coldwater is used in concrete production, Block Ice Machine is the best solution in countries with high ambient and inlet water temperatures.
- **Fishery and Aquatic Food Processing:** Block Ice Machines with Ice Crusher are required to maintain the quality of fish and aquaculture and create longer storage life.

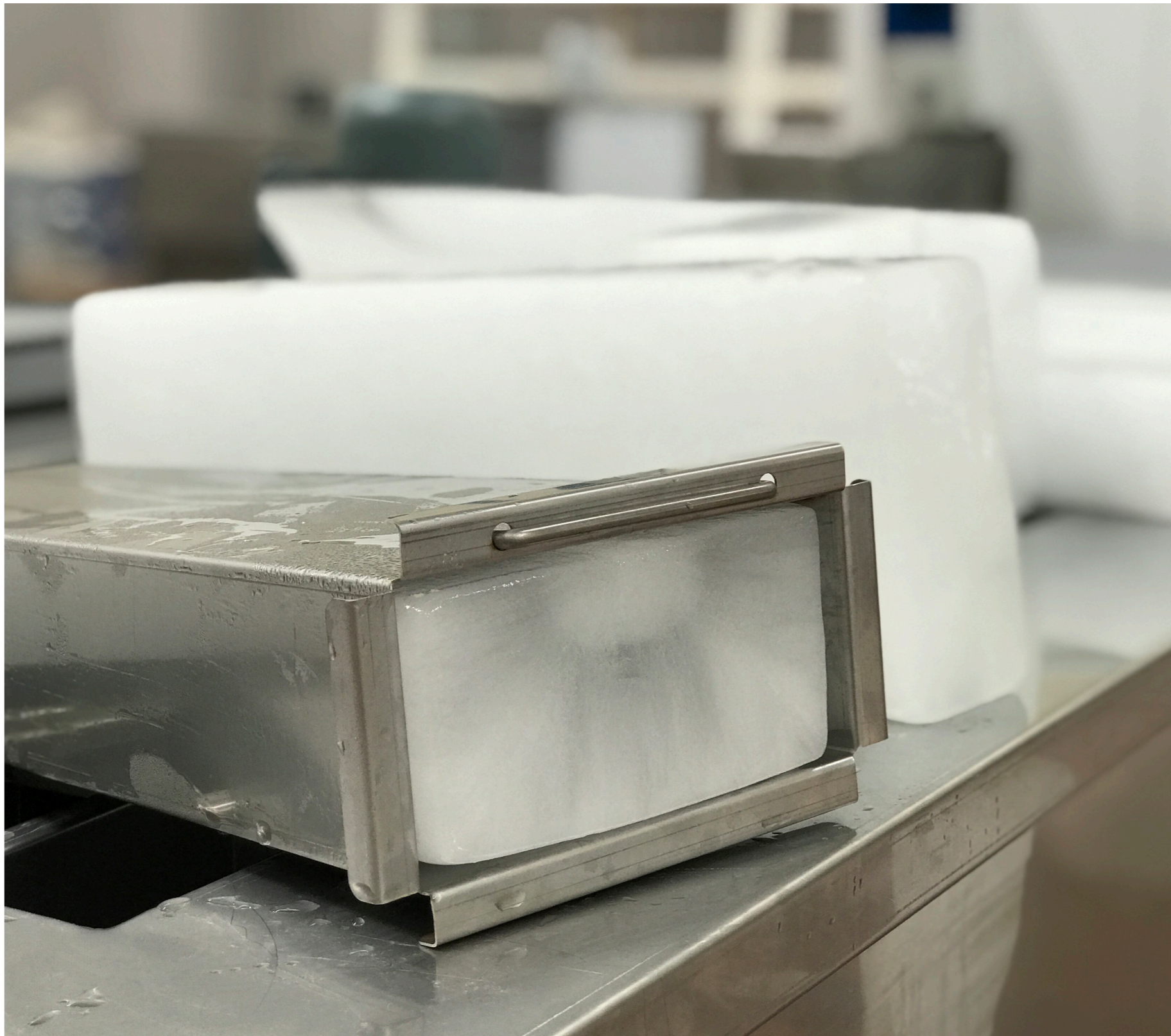


- **Mine Temperature Reduction:** Block Ice Machines with Ice Crusher and Ice Delivery Systems are used to combat the high temperatures that occur underground.

- **Vegetable and Food Processing:** Block Ice Machines are important to maintain the quality of Vegetables–Fruits, Food Processing and create longer storage life.

- **Dye Chemical Industry:** Block Ice must be used for products produced with chemical solutions to maintain their heat values.

- **Poultry Processing:** If Block Ice is used in the facilities where these products are processed, the quality of the product is preserved and it saves energy and water.
- **Dye Chemical Industry:** Block Ice must be used for products produced with chemical solutions to maintain their heat values.
- **Medical Sector:** The use of ice is very important in storing and transporting many medical products such as medicines and vaccines.
- **Bakery and Biscuit Products:** In the production of these products, a serious amount of ice is used in order to achieve the quality of the dough regardless of summer and winter.



BLOCK ICE MACHINES

BIM Series

TAMUTOM Block Ice Machines (BIM Series) are designed from a simple type.

Made in Turkey, and produced in the factory of Rosen Cooling Technologies, which produces in European Standards, with high material and workmanship quality. The machines are developed to be dependable, durable, and reliable.

All of our Block Ice Machines are tested before delivery.

- -15°C Ice temperature,
- Evaporator system designed by Rosen from quality copper pipes,
- -22°C Evaporative temperature,
- Automatic closing and opening when the Salt Water Pool reaches -15°C,
- Suitable for Fresh Water Ice production,
- AISI 304 Stainless steel Blocks, Water Filing System, Harvesting Pool, Block Tilting Unit, Ice Bench, and all equipments,
- AISI 304 Stainless steel outside and polyurethane, fiberglass inside: Brine type Pool, Mixer Pumps and easy to use control box,
- Crane System for Ice Blocks,
- Water - or air - or evaporative type cooled condenser,
- Hermetic or Semi-Hermetic piston or Screw compressor,
- Refrigerant: Freon R404A,
- Pretested in ROSEN Factory.

MODULAR TYPE BLOCK ICE MACHINES TECHNICAL INFORMATION

Block ice machines are designed to obtain ice in equal volume blocks.

Saltwater is cooled down to -15°C with copper serpentine pipes laid in a pool. The water in the blocks placed in saltwater becomes ice through heat transfer in the pool.

After the ice is produced, in machines with a production capacity of 3 ton or more, the blocks are in rows and are lifted with the help of a crane and taken to the immersion pool. Here, the ice separated from the block is deposited on the bench by the tilting unit. This process is repeated as many times as the mold row and the emptied blocks are refilled with the filling unit and production continues.

It is used extensively in the fishery and bakery products sectors. It can also be preferred together with the crusher machine in order to pack it easily and to separate it into smaller kilograms.

It is easy to transfer with a belt conveyor. We also have cold room designs for storage.

Our machines, which are designed to work in different weather conditions, are produced with equipment in accordance with European standards. Our machines, whose production has been completed after being subjected to tests approved by international certification bodies, are used all over the world and continue their production.

Advantages;

- Easy setup
- Low maintenance cost
- Simple operation
- Trustworthy
- Environmentalist
- Suitable for use in the Food Industry

NO:	PRODUCT NAME:	DAILY CAPACITY (x1000KG):	COMPRESSOR (HP):	TE($^{\circ}\text{C}$):	REFRIGERATION CAPACITY (Kcal):	BATCHING/ DAY:	MACHINE DIMENSIONS:		POWER CONSUMPTION (KW/H):	
							MOULD WEIGHT:	DIMENSIONS (W/L/H) (CM):		
1	BIM12	0,25	1.5	-15	2343	5	5	90x90x140	0.94	
2	BIM25	0,50	3	-15	3302	5	5	140x90x140	1.80	
3	BIM50	1	7	-15	7705	5	5	115x300x150	4.58	
4	BIM3T	3	15	-22	15411	3	4	5	160x420x130	11.00
							5	15	230x610x205	
							6	20	230x710x205	
5	BIM4T	4	25	-22	17562	3	7	15	195x725x205	14.00
							8	20	195x735x205	
							9	25	195x685x205	
6	BIM5T	5	30	-22	22618	3	10	15	230x765x205	20.40
							11	20	230x780x205	
							12	25	230x700x205	
7	BIM10T	10	2*30	-22	46010	3	13	15	230x1177x205	40.00
							14	20	230x1115x205	
							15	25	230x1133x205	
8	BIM15T	15	2*50	-22	80358	3	16	15	230x1505x205	64.80
							17	20	230x1405x205	
							18	25	230x1430x205	
9	BIM20T	20	2*60	-22	89371	3	19	15	400x1177x205	79.20
							20	20	400x1115x205	
							21	25	400x1133x205	

MODULAR TYPE BLOCK ICE MACHINE

- BRINE TYPE

BIM12

Total Ice Making Capacity: 250 Kg /day
Ice Block Amount per Shift: 12 Blocks
Each Block Weight: 5 Kg (9cm*16cm*47cm)
Production Time per Shift: 4-5 Hours
Daily Block Production: 60 Pcs
Power Supply: 380-415 V, 3 Phase, 50-60Hz
Ice Temperature: Minus 12°C
Refrigerant: Freon R404A
Unit Weight: 120 Kg
Unit Dimensions: 90cm*90cm*140cm
Power Consumption: 0,94 KW/h
Compressor Capacity: 1,5 HP
Condenser and Capacity: Air Condenser / 3850 M³/H



BIM25

Total Ice Making Capacity: 625 Kg /day
Ice Block Amount per Shift: 25 Blocks
Each Block Weight: 5 Kg (9cm*16cm*47cm)
Production Time per Shift: 4-5 Hours
Daily Block Production: 100-125 Pcs
Power Supply: 380-415 V, 3 Phase, 50-60Hz
Ice Temperature: Minus 12°C
Refrigerant: Freon R404A
Unit Weight: 285 Kg
Unit Dimensions: 90cm*140cm*150cm
Power Consumption: 1,80 KW/h
Compressor Capacity: 3 HP
Condenser and Capacity: Air Condenser / 7550 M³/H



- BRINE TYPE

BIM50

Total Ice Making Capacity: 1000 Kg /day
Ice Block Amount per Shift: 50 Blocks
Each Block Weight: 5 Kg (9cm*16cm*47cm)
Production Time per Shift: 5-6 Hours
Daily Block Production: 200 Pcs
Power Supply: 380-415 V, 3 Phase, 50-60Hz
Ice Temperature: Minus 12°C
Refrigerant: Freon R404A
Unit Weight: 675 Kg
Unit Dimensions: 300cm*115cm*120cm
Power Consumption: 4,58 KW/h
Compressor Capacity: 7 HP
Condenser and Capacity: Air Condenser / 14500 M³/H



BIM3T

Total Ice Making Capacity: 3000 Kg /day
Ice Block Amount per Shift: 84 Blocks
Each Block Weight: 12 Kg (10cm*20cm*70cm)
Production Time per Shift: 7-8 Hours
Daily Block Production: 252 Pcs
Power Supply: 380-415 V, 3 Phase, 50-60Hz
Ice Temperature: Minus 12°C
Refrigerant: Freon R404A
Unit Weight: 1250 Kg
Unit Dimensions: 400cm*150cm*150cm
Power Consumption: 11,00 KW/h
Compressor Capacity: 15 HP
Condenser and Capacity: Air Condenser / 22740 M³/H



- BRINE TYPE

BIM4T

Total Ice Making Capacity: 4000 Kg /day
Ice Block Amount per Shift: 112 Blocks
Each Block Weight: 12 Kg (10cm*20cm*70cm)
Production Time per Shift: 7-8 Hours
Daily Block Production: 336 Pcs
Power Supply: 380-415 V, 3 Phase, 50-60Hz
Ice Temperature: Minus 12°C
Refrigerant: Freon R404A
Unit Weight: 2000 Kg
Unit Dimensions: 450cm*150cm*150cm
Power Consumption: 18,50 KW/h
Compressor Capacity: 20 HP
Condenser and Capacity: Air Condenser / 33898 M³/H



BIM5T

Total Ice Making Capacity: 5000 Kg /day
Ice Block Amount per Shift: 112 Blocks
Each Block Weight: 15 Kg (12cm*21cm*70cm)
Production Time per Shift: 7-8 Hours
Daily Block Production: 336 Pcs
Power Supply: 380-415 V, 3 Phase, 50-60Hz
Ice Temperature: Minus 12°C
Refrigerant: Freon R404A
Unit Weight: 2200 Kg
Unit Dimensions: 570cm*170cm*150cm
Power Consumption: 20,40 KW/h
Compressor Capacity: 30 HP
Condenser and Capacity: Air Condenser / 33898 M³/H



- BRINE TYPE

BIM10T

Total Ice Making Capacity: 10000 Kg /day
Ice Block Amount per Shift: 225 Blocks
Each Block Weight: 15 Kg (12cm*21cm*70cm)
Production Time per Shift: 7-8 Hours
Daily Block Production: 675 Pcs
Power Supply: 380-415 V, 3 Phase, 50-60Hz
Ice Temperature: Minus 12°C
Refrigerant: Freon R404A
Unit Weight: 5200 Kg
Unit Dimensions: 900cm*170cm*150cm
Power Consumption: 40,00 KW/h
Compressor Capacity: 60 HP
Condenser and Capacity: Air Condenser / 39016 M³/H



BIM15T

Total Ice Making Capacity: 15000 Kg /day
Ice Block Amount per Shift: 200 Blocks
Each Block Weight: 25 Kg (12cm*26cm*97cm)
Production Time per Shift: 12 Hours
Daily Block Production: 600 Pcs
Power Supply: 380-415 V, 3 Phase, 50-60Hz
Ice Temperature: Minus 12°C
Refrigerant: Freon R404A
Unit Weight: 7500 Kg
Unit Dimensions: 900cm*170cm*150cm
Power Consumption: 64,80 KW/h
Compressor Capacity: 100 HP
Condenser and Capacity: Air Condenser / 58524 M³/H



- BRINE TYPE

BIM20T

Total Ice Making Capacity: 20000 Kg /day
Ice Block Amount per Shift: 400 Blocks
Each Block Weight: 25 Kg (12cm*26cm*97cm)
Production Time per Shift: 12 Hours
Daily Block Production: 800 Pcs
Power Supply: 380-415 V, 3 Phase, 50-60Hz
Ice Temperature: Minus 12°C
Refrigerant: Freon R404A
Unit Weight: 10500 Kg
Unit Dimensions: 1200cm*225cm*150cm
Power Consumption: 79,20 KW/h
Compressor Capacity: 120 HP
Condenser and Capacity: Air Condenser / 135240 M³/H



- Block Ice Machine Test Phase



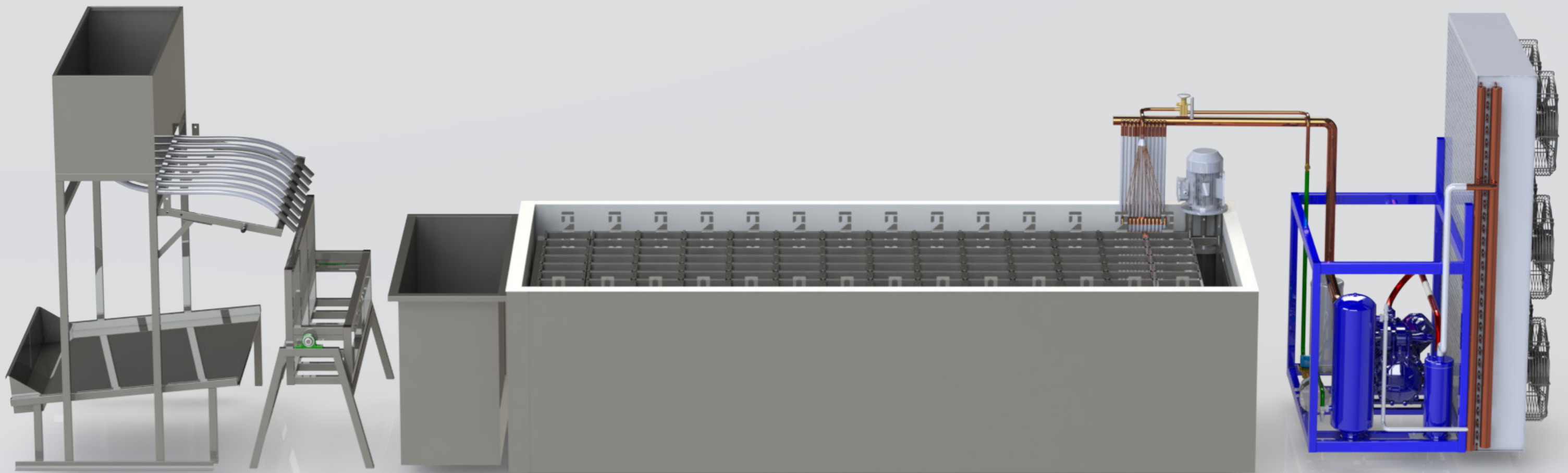
Export to: Nigeria
Model: BIM3T

BLOCK ICE MACHINE

From left to right:

Ice Bench, Filling Unit, Tilting Unit, Defrost Tank, Brine Pool, Engine unit

*The diagram below represents a block ice maker installation variation (without winch). The actual machine may differ.



MOBIL (CONTAINERIZED) TYPE BLOCK ICE MACHINES

NO:	PRODUCT NAME:	DAILY CAPACITY (x1000KG):	COMPRESSOR (HP):	TE(°C):	REFRIGERATION CAPACITY (Kcal):	BATCHING/ DAY:	MACHINE DIMENSIONS:	INSTALLED POWER(KW):	POWER CONSUMPTION (KW/H):
1	BIM3TCO	3	15	-22	15411	3	20DC or 40HC(Container)	13.55	11.00
2	BIM4TCO	4	25	-22	17562	3	20DC or 40HC(Container)	17.50	14.00
3	BIM5TCO	5	30	-22	22618	3	20DC or 40HC(Container)	25.20	20.40
4	BIM10TCO	10	2*30	-22	46010	3	40HC(Container)	50.40	40.00

- BRINE TYPE

BIM3TCO

- Total Ice Making Capacity:** 3000 Kg /day
- Ice Block Amount per Shift:** 84 Blocks
- Each Block Weight:** 12 Kg (10cm*20cm*70cm)
- Production Time per Shift:** 7-8 Hours
- Daily Block Production:** 252 Pcs
- Power Supply:** 380-415 V, 3 Phase, 50-60Hz
- Ice Temperature:** Minus 12°C
- Refrigerant:** Freon R404A
- Unit Weight:** 3500 Kg
- Unit Dimensions:** 20FT Standart Container
- Power Consumption:** 11,00 KW/h
- Compressor Capacity:** 15 HP
- Condenser and Capacity:** Air Condenser / 22740 M³/H
- Type:** 20FT Standard Isolation's Container with Sandwich Panels



- BRINE TYPE

BIM4TCO

- Total Ice Making Capacity:** 4000 Kg /day
- Ice Block Amount per Shift:** 112 Blocks
- Each Block Weight:** 12 Kg (10cm*20cm*70cm)
- Production Time per Shift:** 7-8 Hours
- Daily Block Production:** 336 Pcs
- Power Supply:** 380-415 V, 3 Phase, 50-60Hz
- Ice Temperature:** Minus 12°C
- Refrigerant:** Freon R404A
- Unit Weight:** 4250 Kg
- Unit Dimensions:** 20FT Standart Container
- Power Consumption:** 18,50 KW/h
- Compressor Capacity:** 20 HP
- Condenser and Capacity:** Air Condenser / 33898 M³/H
- Type:** 20FT Standard Isolation's Container with Sandwich Panels



BIM5TCO

- Total Ice Making Capacity:** 5000 Kg /day
- Ice Block Amount per Shift:** 112 Blocks
- Each Block Weight:** 15 Kg (12cm*21cm*70cm)
- Production Time per Shift:** 7-8 Hours
- Daily Block Production:** 336 Pcs
- Power Supply:** 380-415 V, 3 Phase, 50-60Hz
- Ice Temperature:** Minus 12°C
- Refrigerant:** Freon R404A
- Unit Weight:** 4500 Kg
- Unit Dimensions:** 20FT Standart Container
- Power Consumption:** 20,40 KW/h
- Compressor Capacity:** 30 HP
- Condenser and Capacity:** Air Condenser / 33898 M³/H
- Type:** 20FT Standard Isolation's Container with Sandwich Panels



- BRINE TYPE

BIM10TCO

Total Ice Making Capacity: 10000 Kg /day

Ice Block Amount per Shift: 225 Blocks

Each Block Weight: 15 Kg (12cm*21cm*70cm)

Production Time per Shift: 7-8 Hours

Daily Block Production: 675 Pcs

Power Supply: 380-415 V, 3 Phase, 50-60Hz

Ice Temperature: Minus 12°C

Refrigerant: Freon R404A

Unit Weight: 8750 Kg

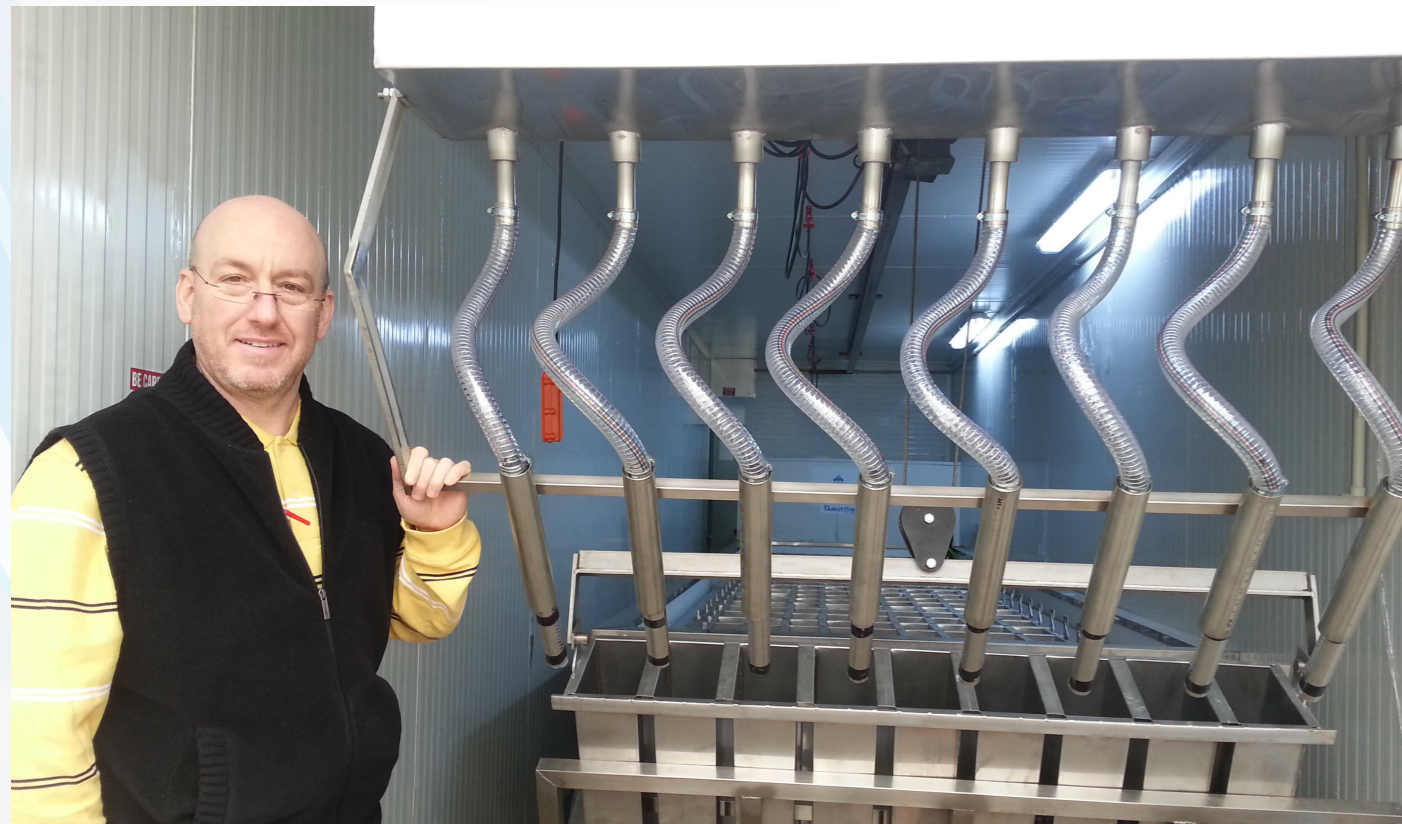
Unit Dimensions: 40FT Standart Container

Power Consumption: 40,00 KW/h

Compressor Capacity: 60 HP

Condenser and Capacity: Air Condenser / 39016 M³/H

Type: 40FT Standard Isolation's Container with Sandwich Panels



• 10 Ton Containerized Type Block Ice Machine



Export to: Ivory Coast
Model: BIM10TCO

MOBIL (CONTAINERIZED) AND COLD ROOM TYPE BLOCK ICE MACHINES

NO:	PRODUCT NAME:	DAILY CAPACITY (x1000KG):	COMPRESSOR (HP):	TE(°C):	REFRIGERATION CAPACITY (Kcal):	BATCHING/ DAY:	MACHINE DIMENSIONS:	INSTALLED POWER(KW):	POWER CONSUMPTION (KW/H):
1	BIM3TCOS	3	15	-22	15411	3	40HC(Container)	14.68	11.80
2	BIM4TCOS	4	25	-22	17562	3	40HC(Container)	19.00	14.70
3	BIM5TCOS	5	30	-22	22618	3	40HC(Container)	26.33	21.20

- BRINE TYPE

BIM3TCOS

Total Ice Making Capacity: 3000 Kg /day

Ice Block Amount per Shift: 84 Blocks

Each Block Weight: 12 Kg (10cm*20cm*70cm)

Production Time per Shift: 7-8 Hours

Daily Block Production: 252 Pcs

Power Supply: 380-415 V, 3 Phase, 50-60Hz

Ice Temperature: Minus 12°C

Refrigerant: Freon R404A

Unit Weight: 6000 Kg

Unit Dimensions: 40FT Standart Container

Power Consumption: 11,80 KW/h

Compressor Capacity: 15 HP

Condenser and Capacity: Air Condenser / 22740 M³/H

Type: 40FT Standard Isolation's Container with Sandwich Panels

Cold Room Isolation: 100mm Sandwich Panels and Cooling Unit

Cold Room Dimensions: 300cm*200cm*250cm



- BRINE TYPE

BIM4TCOS

Total Ice Making Capacity: 4000 Kg /day

Ice Block Amount per Shift: 112 Blocks

Each Block Weight: 12 Kg (10cm*20cm*70cm)

Production Time per Shift: 7-8 Hours

Daily Block Production: 336 Pcs

Power Supply: 380-415 V, 3 Phase, 50-60Hz

Ice Temperature: Minus 12°C

Refrigerant: Freon R404A

Unit Weight: 7500 Kg

Unit Dimensions: 40FT Standart Container

Power Consumption: 19,00 KW/h

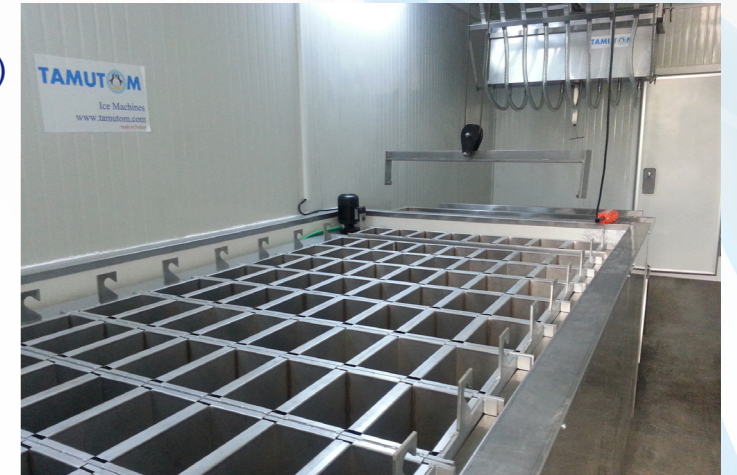
Compressor Capacity: 20 HP

Condenser and Capacity: Air Condenser / 33898 M³/H

Type: 40FT Standard Isolation's Container with Sandwich Panels

Cold Room Isolation: 100mm Sandwich Panels and Cooling Unit

Cold Room Dimensions: 300cm*200cm*250cm



BIM5TCOS

Total Ice Making Capacity: 5000 Kg /day

Ice Block Amount per Shift: 112 Blocks

Each Block Weight: 15 Kg (12cm*21cm*70cm)

Production Time per Shift: 7-8 Hours

Daily Block Production: 336 Pcs

Power Supply: 380-415 V, 3 Phase, 50-60Hz

Ice Temperature: Minus 12°C

Refrigerant: Freon R404A

Unit Weight: 6500 Kg

Unit Dimensions: 40FT Standart Container

Power Consumption: 21,20 KW/h

Compressor Capacity: 30 HP

Condenser and Capacity: Air Condenser / 33898 M³/H

Type: 40FT Standard Isolation's Container with Sandwich Panels

Cold Room Isolation: 100mm Sandwich Panels and Cooling Unit

Cold Room Dimensions: 300cm*200cm*250cm





cube Ice Machines

Applications of Cube Ice Machines

Tamutom Ice Machines are built under the brand name ROSEN. Best-in-class production, multiple types of ice, and storage capacities create a reliable and comprehensive sales network. Our Cube Ice Machines have 3 capacities: 250 kg, 500 kg, and 900 kg per day. They are perfect for use in hotels, restaurants, fast food outlets, bars, cafes, clubs, convenience stores, healthcare applications, and more.

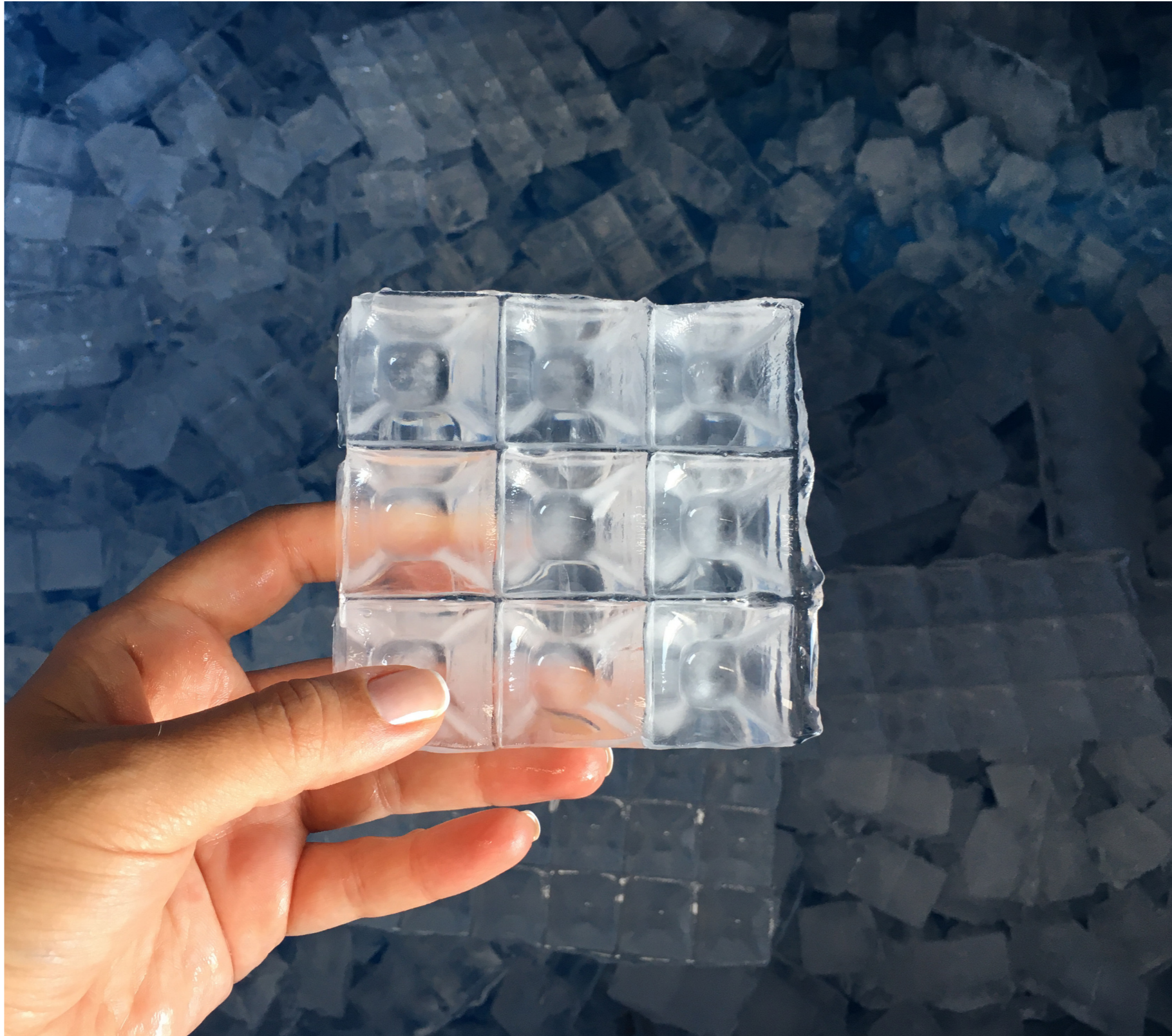
- **Ice Business:** Large-capacity machines are preferred, and daily ice sales transactions are carried out by production.

- **Social and Entertainment Sectors:** They are the most favorite machines that hotels, restaurants, fast food shops, bars, cafes and clubs cannot do without using.



- **Medical Sector:** The use of ice is very important in storing and transporting many medical products such as medicines and vaccines.

- **Bakery and Biscuit Products:** In the production of these products, a serious amount of ice is used in order to achieve the quality of the dough regardless of summer and winter.



CUBE ICE MACHINES

CUBE Series

Cube Ice Machines with high production capacity:

- Contemporary, elegant design,
- Low energy consumption,
- Electronic controls, maximize reliability and ease of repair during the entire life span of the equipment,
- Perfect for those who need big quantities of ice,
- Compatible insulated Ice Storage Bin and door available.

Getting the most out of your ice machine:

- For best performance in air-cooled machines, please allow for a minimum of 15 cm on both sides of the machine for air to circulate freely.
- Please also reserve enough space at the back of the machine for electrical and water connections.
- Please provide good quality potable water at the inlet of the ice machine. This will result in crystal clear, eye-catching ice cubes and prevent the ice machine from accumulating scale.
- The cooler the temperature of the inlet water, the better would be the ice production efficiency of the machine.
- Do not install the ice maker near any heat source as it may impact the production capacity of the ice machine.

CUBE ICE MACHINES TECHNICAL INFORMATION

NO:	PRODUCT NAME:	DAILY CAPACITY:	COMPRESSOR (HP):	TE(°C):	REFRIGERATION CAPACITY (Kcal):	ICE MAKING TIME EACH PERIOD (MINUTES):	MACHINE DIMENSIONS:			ICE STORAGE CAPACITY (LITER):	POWER CONSUMPTION (KW/H):
							DIMENSIONS OF EACH CUBE (L*W*H) (MM):	DIMENSIONS CUBE ICE MACHINE (L*W*H) (MM):	DIMENSIONS STORAGE BIN (L*W*H) (MM):		
1	CUBE 250	250	1.5	-5	2343	15-17	22*22*22	760*618*568	760*830*1150	125	1,30
2	CUBE 500	500	3	-5	3302	15-17	28*28*22	760*618*743	760*840*1150	125	2,30
3	CUBE 900	900	5	-5	5405	15-17	28*28*22	1227*648*803	1227*973*1255	315	3,80

*Capacities for all models are based on air/water temperature of 10°C/10°C. Electricals: 220V/50Hz/1Ph and 380V/60Hz/3Ph
Specifications, features, models, and colors are subject to change, without any prior notice, due to continuous product development.

CUBE ICE MACHINES TECHNICAL INFORMATION

CUBE250

Total Ice Making Capacity: 250 Kg /day
Ice Making Cap. (Per Hour): 10,4 Kg
Size of Per Cube: 22mm*22mm*22mm
Ice Temperature: Minus 2°C
Refrigerant: Freon R404A
Cooling Mode: Air Cooled Condenser
Power Consumption: 1300W
Power Supply: 220V/50HZ/1PH
Ice Storage Bin Capacity: 125 Kg
Size of Ice Cube Machine (L*W*H): 760mm*618mm*568mm
Size of ice bin (L*W*H): 760mm*830mm*1150mm



CUBE500

Total Ice Making Capacity: 500 Kg /day
Ice Making Cap. (Per Hour): 20,8 Kg
Size of Per Cube: 28mm*28mm*22mm
Ice Temperature: Minus 2°C
Refrigerant: Freon R404A
Cooling Mode: Air Cooled Condenser
Power Consumption: 2600W
Power Supply: 220V/50HZ/1PH
Ice Storage Bin Capacity: 125 Kg
Size of Ice Cube Machine (L*W*H): 760mm*618mm*743mm
Size of ice bin (L*W*H): 760mm*830mm*1150mm



CUBE900

Total Ice Making Capacity: 900 Kg /day
Ice Making Cap. (Per Hour): 37,5 Kg
Size of Per Cube: 28mm*28mm*22mm
Ice Temperature: Minus 2°C
Refrigerant: Freon R404A
Cooling Mode: Air Cooled Condenser
Power Consumption: 3800W
Power Supply: 380V/50HZ/3PH
Ice Storage Bin Capacity: 315 Kg
Size of Ice Cube Machine (L*W*H): 1227mm*648mm*803mm
Size of ice bin (L*W*H): 1227mm*973mm*1255mm



OTHER EQUIPMENT OF CUBE ICE MACHINES

Ice Delivery System (Silo) and Sealing Machine



* OPTIONAL



**flake
ice
machines**

Applications of Flake Ice Machines

- **Concrete Cooling Project:** Cold water is used in concrete production, Flake Ice Machine is the best solution in countries with high ambient and inlet water temperatures.

- **Fishery and Aquatic Food Processing:** Flake Ice Machines are required to maintain the quality of fish and aquaculture and create longer storage life.

- **Mine Temperature Reduction:** Flake Ice Machines and Ice Delivery Systems are used to combat the high temperatures that occur underground.

- **Vegetable and Food Processing:** Flake ice machines are important to maintain the quality of Vegetable–Fruits, Food Processing and create longer storage life.



- **Bakery and Biscuit Products:** In the production of these products, a serious amount of ice is used in order to achieve the quality of the dough regardless of summer and winter.

- **Poultry Processing:** If Flake Ice is used in the facilities where these products are processed, the quality of the product is preserved and it saves energy and water.

- **Dairy Processing:** The use of Flake Ice is essential to preserve the quality of the products and to extend their storage life.

- **Medical Sector:** The use of ice is very important in storing and transporting many medical products such as medicines and vaccines.

- **Dye Chemical Industry:** Flake Ice must be used for products produced with chemical solutions to maintain their heat values.

- **Medium and Large Chain Supermarket:** These supermarkets have continuous Flake Ice sales on their cold shelves.

- **Artificial Skiing Ground:** Artificial Snow, which is found in many examples of artificial ski resorts in the world, is produced by Flake Ice Machines.



FLAKE ICE MACHINES

FIM Series

TAMUTOM Flake Ice Machines (FIM Series) are designed from a simple type.

Made in Turkey, and produced in the factory of Rosen Refrigeration Technologies, which produces in European Standards, with high material and workmanship quality.

The machines are developed to be dependable, durable, and reliable.

All of our Flake Ice Machines are tested before delivery.

- -6°C / -7°C Ice temperature,
- Vertical static ice drum, reducing leakage and wear,
- -22°C Evaporative temperature,
- Suitable for Fresh or Salt (Sea) Water ice production,
- Stainless steel base frame, Ice knife and Construction,
- Chrome-plated carbon steel inner ice drum, stainless steel outside,
- Including gear motor, water - and salt mix pump (dosing pump), and easy to use control box,
- Water - or air - or evaporative type cooled condenser,
- Hermetic or Semi-Hermetic piston or scroll compressor,
- Pretested in ROSEN Factory,
- Refrigerant: Freon R404A

FLAKE ICE MACHINES TECHNICAL INFORMATION

- Flake ice machines are designed for ice production capacities.
- Ice is produced with a vertical cylinder shaped ice evaporator unit.
- Our machines are produced as a closed circuit.
- Our flake ice machines are ready for use after electrical and water connections are made.
- Our machines, which are designed to work in different weather conditions, are produced with equipment in accordance with European standards.
- Our machines, whose production is completed after being subjected to tests approved by international certification bodies, are used all over the world and continue to produce.
- Flake ice consists of flake-shaped pieces of 2mm thickness and 20-50mm width in the temperature range of -5 ° C -8 ° C.
- Heat transfer is higher than other types of ice. Its transfer is simple with a screw conveyor and belt conveyor.
- If you wish, we have designs with cold rooms for storage.

NO:	PRODUCT NAME:	DAILY CAPACITY (x1000KG):	COMPRESSOR (HP):	TE(°C):	REFRIGERATION CAPACITY (Kcal):	WATER INLET:	WATER SUPPLY (L/DAY):	INSTALLED POWER(KW):	POWER CONSUMPTION (KW/H):
1	FIM500	0,5	3	-20	5104	½”	20,83	2.94	2.1
2	FIM1T	1	5	-20	9265	½”	41,67	4.84	3.8
3	FIM3T	3	15	-22	21755	½”	125	13.27	10.61
4	FIM5T	5	25	-22	35650	1”	208,33	21.58	17.26
5	FIM10T	10	50	-22	58686	1”	416,67	41.57	33.26
6	FIM15T	15	80	-23	96418	1”	625	65.52	52.41
7	FIM20T	20	100	-23	117372	1”	833,33	82.02	73.81
8	FIM25T	25	120	-24	144628	1”	1041,67	98.52	88.67
9	FIM30T	30	150	-25	176058	1”	1250	115.02	103.52
10	FIM40T	40	200	-25	234744	1”	1666,67	160.12	144.11
11	FIM60T	60	300	-25	352116	1”	2500	239.62	216.66
12	FIM90T	90	450	-25	528174	1”	3750	356.37	320.73

FLAKE ICE MACHINES TECHNICAL INFORMATION

- FRESH WATER

FIM500

- Total Ice Making Capacity:** 500 kg /day
- Water Type:** Fresh (City) Water
- Ice Making Cap. (Per Hour):** 20.83 Kg
- Ice Thickness:** ~1.8 – 2 mm
- Power Supply:** 380-415 V, 3 Phase, 50-60Hz
- Ice Temperature:** Minus 5°C
- Refrigerant:** Freon R404A
- Unit Weight:** 250 KG
- Unit Dimensions:** 120cm*120cm*100cm
- Power Consumption:** 2,94 KW/h
- Compressor Capacity:** 3 HP
- Condenser and Capacity:** Air Condenser / 7550 M³/H



FIM1T

- Total Ice Making Capacity:** 1000 kg /day
- Water Type:** Fresh (City) Water
- Ice Making Cap. (Per Hour):** 41.67 Kg
- Ice Thickness:** ~1.8 – 2 mm
- Power Supply:** 380-415 V, 3 Phase, 50-60Hz
- Ice Temperature:** Minus 5°C
- Refrigerant:** Freon R404A
- Unit Weight:** 300 KG
- Unit Dimensions:** 120cm*130cm*120cm
- Power Consumption:** 4,84 KW/h
- Compressor Capacity:** 5 HP
- Condenser and Capacity:** Air Condenser / 14500 M³/H



- FRESH WATER

FIM3T

Total Ice Making Capacity: 3000 kg /day

Water Type: Fresh (City) Water

Ice Making Cap. (Per Hour): 125 Kg

Ice Thickness: ~1.8 – 2 mm

Power Supply: 380-415 V, 3 Phase, 50-60Hz

Ice Temperature: Minus 5°C

Refrigerant: Freon R404A

Unit Weight: 800 KG

Unit Dimensions: 160cm*170cm*100cm

Power Consumption: 13,27 KW/h

Compressor Capacity: 15 HP

Condenser and Capacity: Air Condenser / 22740 M³/H



FIM5T

Total Ice Making Capacity: 5000 kg /day

Water Type: Fresh (City) Water

Ice Making Cap. (Per Hour): 208.33 Kg

Ice Thickness: ~1.8 – 2 mm

Power Supply: 380-415 V, 3 Phase, 50-60Hz

Ice Temperature: Minus 5°C

Refrigerant: Freon R404A

Unit Weight: 1200 KG

Unit Dimensions: 230cm*210cm*170cm

Power Consumption: 21,58 KW/h

Compressor Capacity: 25 HP

Condenser and Capacity: Air Condenser / 33898 M³/H



- FRESH WATER

FIM10T

Total Ice Making Capacity: 10000 kg /day

Water Type: Fresh (City) Water

Ice Making Cap. (Per Hour): 416.67 Kg

Ice Thickness: ~1.8 – 2 mm

Power Supply: 380-415 V, 3 Phase, 50-60Hz

Ice Temperature: Minus 5°C

Refrigerant: Freon R404A

Unit Weight: 2000 KG

Unit Dimensions: 215cm*300cm*195cm

Power Consumption: 41,57 KW/h

Compressor Capacity: 50 HP

Condenser and Capacity: Air Condenser / 39016 M³/H



FIM15T

Total Ice Making Capacity: 15000 kg /day

Water Type: Fresh (City) Water

Ice Making Cap. (Per Hour): 625 Kg

Ice Thickness: ~1.8 – 2 mm

Power Supply: 380-415 V, 3 Phase, 50-60Hz

Ice Temperature: Minus 5°C

Refrigerant: Freon R404A

Unit Weight: 2500 KG

Unit Dimensions: 210cm*550cm*200cm

Power Consumption: 65,52 KW/h

Compressor Capacity: 80 HP

Condenser and Capacity: Air Condenser / 58524 M³/H





- FRESH WATER

FIM20T

Total Ice Making Capacity: 20000 kg /day
Water Type: Fresh (City) Water
Ice Making Cap. (Per Hour): 833.33 Kg
Ice Thickness: ~1.8 – 2 mm
Power Supply: 380-415 V, 3 Phase, 50-60Hz
Ice Temperature: Minus 5°C
Refrigerant: Freon R404A
Unit Weight: 4000 KG
Unit Dimensions: 235cm*550cm*220cm
Power Consumption: 82,02 KW/h
Compressor Capacity: 100 HP
Condenser and Capacity: Air Condenser / 135240 M³/H



• 20 Ton Flake Ice Machine Production Area



- FRESH WATER

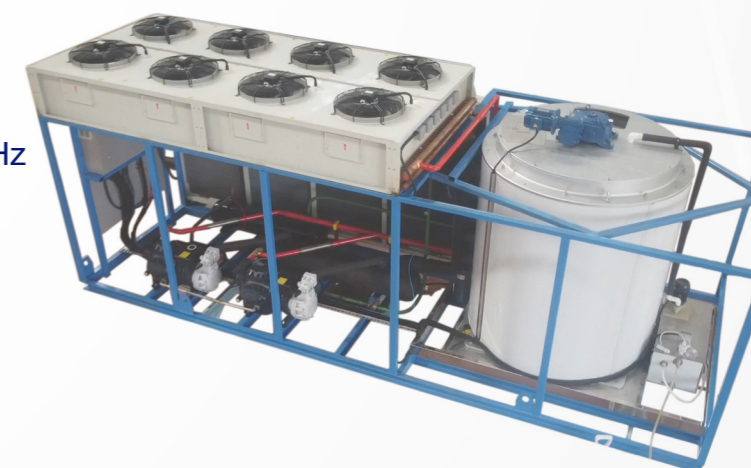
FIM25T

Total Ice Making Capacity: 25000 kg /day
Water Type: Fresh (City) Water
Ice Making Cap. (Per Hour): 1041.67 Kg
Ice Thickness: ~1.8 – 2 mm
Power Supply: 380-415 V, 3 Phase, 50-60Hz
Ice Temperature: Minus 5°C
Refrigerant: Freon R404A
Unit Weight: 4500 KG
Unit Dimensions: 235cm*550cm*240cm
Power Consumption: 98,52 KW/h
Compressor Capacity: 140 HP
Condenser and Capacity: Air Condenser / 135240 M³/H



FIM30T

Total Ice Making Capacity: 30000 kg /day
Water Type: Fresh (City) Water
Ice Making Cap. (Per Hour): 1250 Kg
Ice Thickness: ~1.8 – 2 mm
Power Supply: 380-415 V, 3 Phase, 50-60Hz
Ice Temperature: Minus 5°C
Refrigerant: Freon R404A
Unit Weight: 5000 KG
Unit Dimensions: 240cm*650cm*240cm
Power Consumption: 103,52 KW/h
Compressor Capacity: 140 HP
Condenser and Capacity: Air Condenser / 135240 M³/H



FLAKE ICE MACHINES TECHNICAL INFORMATION

- SEA WATER

FIM500-SW

Total Ice Making Capacity: 500 kg /day

Water Type: Sea Water

Ice Making Cap. (Per Hour): 20.8 Kg

Ice Thickness: ~1.8 – 2 mm

Power Supply: 380-415 V, 3 Phase, 50-60Hz

Ice Temperature: Minus 5°C

Refrigerant: Freon R404A

Unit Weight: 200 KG

Unit Dimensions: 120cm*120cm*130cm

Power Consumption: 4,7 KW/h

Compressor Capacity: 5 HP

Condenser and Capacity: Water Condenser



FIM1T-SW

Total Ice Making Capacity: 1000 kg /day

Water Type: Sea Water

Ice Making Cap. (Per Hour): 41.7 Kg

Ice Thickness: ~1.8 – 2 mm

Power Supply: 380-415 V, 3 Phase, 50-60Hz

Ice Temperature: Minus 5°C

Refrigerant: Freon R404A

Unit Weight: 320 KG

Unit Dimensions: 120cm*130cm*140cm

Power Consumption: 8,7 KW/h

Compressor Capacity: 10 HP

Condenser and Capacity: Water Condenser



- SEA WATER

FIM3T-SW

Total Ice Making Capacity: 3000 kg /day

Water Type: Sea Water

Ice Making Cap. (Per Hour): 125 Kg

Ice Thickness: ~1.8 – 2 mm

Power Supply: 380-415 V, 3 Phase, 50-60Hz

Ice Temperature: Minus 5°C

Refrigerant: Freon R404A

Unit Weight: 800 KG

Unit Dimensions: 155cm*170cm*140cm

Power Consumption: 19,9 KW/h

Compressor Capacity: 25 HP

Condenser and Capacity: Water Condenser



FIM5T-SW

Total Ice Making Capacity: 5000 kg /day

Water Type: Sea Water

Ice Making Cap. (Per Hour): 208.33 Kg

Ice Thickness: ~1.8 – 2 mm

Power Supply: 380-415 V, 3 Phase, 50-60Hz

Ice Temperature: Minus 5°C

Refrigerant: Freon R404A

Unit Weight: 1200 KG

Unit Dimensions: 210cm*230cm*170cm

Power Consumption: 24 KW/h

Compressor Capacity: 30 HP

Condenser and Capacity: Water Condenser



- SEA WATER

FIM10T-SW

Total Ice Making Capacity: 10000 kg /day
Water Type: Sea Water
Ice Making Cap. (Per Hour): 416.67 Kg
Ice Thickness: ~1.8 – 2 mm
Power Supply: 380-415 V, 3 Phase, 50-60Hz
Ice Temperature: Minus 5°C
Refrigerant: Freon R404A
Unit Weight: 2000 KG
Unit Dimensions: 215cm*300cm*195cm
Power Consumption: 48 KW/h
Compressor Capacity: 2x30 HP
Condenser and Capacity: Water Condenser



FIM15T-SW

Total Ice Making Capacity: 15000 kg /day
Water Type: Sea Water
Ice Making Cap. (Per Hour): 625 Kg
Ice Thickness: ~1.8 – 2 mm
Power Supply: 380-415 V, 3 Phase, 50-60Hz
Ice Temperature: Minus 5°C
Refrigerant: Freon R404A
Unit Weight: 2800 KG
Unit Dimensions: 250cm*400cm*195cm
Power Consumption: 77,9 KW/h
Compressor Capacity: 2x50 HP
Condenser and Capacity: Water Condenser



- SEA WATER

FIM20T-SW

Total Ice Making Capacity: 20000 kg /day
Water Type: Sea Water
Ice Making Cap. (Per Hour): 833.33 Kg
Ice Thickness: ~1.8 – 2 mm
Power Supply: 380-415 V, 3 Phase, 50-60Hz
Ice Temperature: Minus 5°C
Refrigerant: Freon R404A
Unit Weight: 3200 KG
Unit Dimensions: 260cm*400cm*210cm
Power Consumption: 98,52 KW/h
Compressor Capacity: 2x60 HP
Condenser and Capacity: Water Condenser



• 20 Ton Flake Ice Machine Test Phase



Tube Ice Machines

Applications of Tube Ice Machines

Tamutom Ice Machines are built under the brand name ROSEN. Best-in-class production, multiple types of ice, and storage capacities create a reliable and comprehensive sales network. Our Tube Ice Machines have 3 capacities: 3 Ton, 5 Ton, and 10 Ton per day. They are perfect for use in hotels, restaurants, fast food outlets, bars, cafes, clubs, convenience stores, healthcare applications, and more.

- **Ice Business:** Large-capacity machines are preferred, and daily ice sales transactions are carried out by production.

- **Social and Entertainment Sectors:** They are the most favorite machines that hotels, restaurants, fast food shops, bars, cafes and clubs cannot do without using.



- **Medical Sector:** The use of ice is very important in storing and transporting many medical products such as medicines and vaccines.

- **Bakery and Biscuit Products:** In the production of these products, a serious amount of ice is used in order to achieve the quality of the dough regardless of summer and winter.



TUBE ICE MACHINES

TUBE Series

Tube ice machines are designed in accordance with their ice production capacity. Ice is produced by the ice evaporator unit inside vertical cylindrical pipes. Our machines are produced as a closed circuit. Our tube ice machines are ready for use after electrical and water connections are made.

Our machines, which are designed to work in different weather conditions, are produced with equipment in accordance with European standards. Our machines, whose production has been completed after being subjected to tests approved by international certification bodies, are used all over the world and continue their production. Ice tubes consist of pieces in the form of tubes with a diameter of 29 mm and a length of 35-45 mm in the temperature range of -5°C to -8°C . Heat transfer is higher than mold ice.

It is widely used in hotels and restaurants.

Its transfer is simple with a screw conveyor and belt conveyor. If you wish, we have cold room designs for storage.

Advantages;

- Easy setup
- Ice production in short periods
- Low maintenance cost
- Simple operation
- Trustworthy
- Environmentalist
- Suitable for use in the Food Industry

TUBE ICE MACHINES TECHNICAL INFORMATION

NO:	PRODUCT NAME:	DAILY CAPACITY (x1000KG):	COMPRESSOR (HP):	TE(°C):	REFRIGERATION CAPACITY (Kcal):	WATER INLET:	WATER SUPPLY (L/DAY):	INSTALLED POWER(KW):	POWER CONSUMPTION (KW/H):
1	TUBE3T	3000	15	-22	21755	½”	133,52	13.27	10.61
2	TUBE5T	4750	25	-22	35650	1”	208,33	21.58	17.26
3	TUBE10T	9500	50	-22	58686	1”	416,67	41.57	33.26

TUBE3T

Total Ice Making Capacity: 3000 Kg /day
Ice Making Cap. (Per Hour): 125 Kg
Diameter of Per Tube: 29mm Ø
Refrigerant: Freon R134A
Cooling Mode: Air Cooled Condenser
Compressor Power: 15HP
Power Consumption: 10,61 KW/H
Power Supply: 380V/50HZ/3PH
Machine Chassis: Stainless Steel 304



TUBE5T

Total Ice Making Capacity: 4750 Kg /day
Ice Making Cap. (Per Hour): 198 Kg
Diameter of Per Tube: 29mm Ø
Refrigerant: Freon R134A
Cooling Mode: Air Cooled Condenser
Compressor Power: 25HP
Power Consumption: 17,26 KW/H
Power Supply: 380V/50HZ/3PH
Machine Chassis: Stainless Steel 304



TUBE10T

Total Ice Making Capacity: 9500 Kg /day
Ice Making Cap. (Per Hour): 395 Kg
Diameter of Per Tube: 29mm Ø
Refrigerant: Freon R134A
Cooling Mode: Air Cooled Condenser
Compressor Power: 50HP
Power Consumption: 33,26 KW/H
Power Supply: 380V/50HZ/3PH
Machine Chassis: Stainless Steel 304



*Recommended ambient temperature for all models is 35°C air, and 15°C water.
Electrics: 380V/60Hz/3Ph.
 Specifications, features, models, and colors are subject to change without notice due to continuous product development.

OTHER EQUIPMENT OF TUBE ICE MACHINES

Ice Delivery System (Silo) and Sealing Machine



* OPTIONAL

TAMUTOM

ICE MACHINE by ROSEN CO.



We continue to produce solutions that support growth with our business partners.

ROSEN COOLING TECHNOLOGY

Factory: İnönü Mah. Fatih Sultan Cad. 139 Sok. No:51
Ayrancılar, Torbalı IZMIR/TURKIYE 35870
Factory Phone: +90 (232) 257 57 02
E-mail: ice@tamutom.com

www.tamutom.com



You can follow
our products
and new
collaborations
on our website.