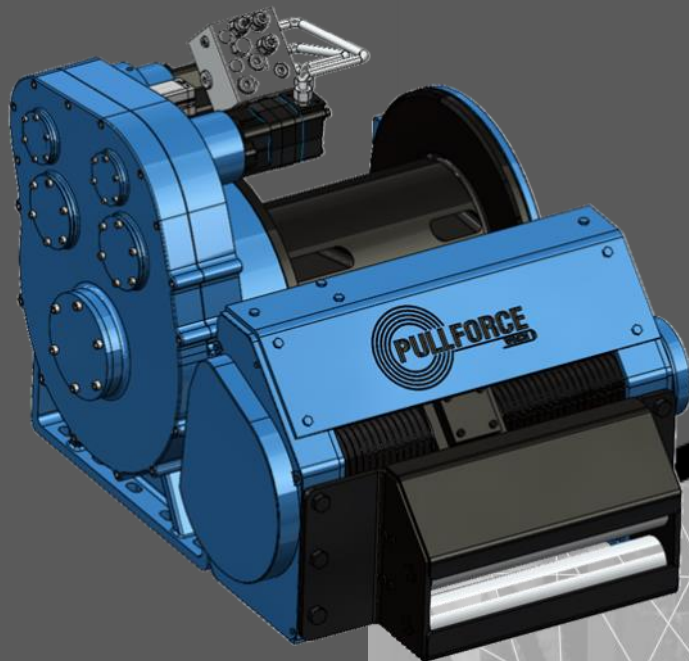


Towing and Recovery Hydraulic Winches Catalogue

2023





PULLFORCE

Milestones of success

Pullforce was established as a winch brand of Hidroforce company. Pullforce commenced its R&D studies in 2014 in order to create a well-known and reliable towing and recovery winch brand on the regional and global levels, based on the rich experience of its founders in the hydraulic industry.

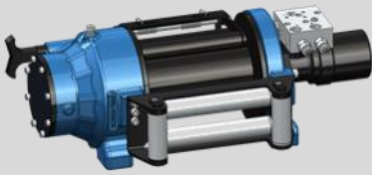
Since its establishment, Pullforce has focused on continuously enhancing the quality of its products by constantly improving its production facilities and equipment, using quality component brands and raw materials in the industry, and constantly improving the skills and qualification of its personnel.

A well-organized production process with its expert staff, certified quality control management and trust-based relations with customers from different sectors, - all this helps Pullforce move towards their goal of production of reliable towing and recovery winches.

After the onset of its R&D projects in 2014, Pullforce started the production of civil vehicle winches in 2016. Our company, which has reached a significant share in the civilian vehicle winch market, initiated in 2017 R&D studies in towing and recovery winches produced in accordance with stricter military standards for army vehicles. In 2019, Pullforce successfully delivered its first military project.

Pullforce promotes itself as the choice of those who are looking for premium equipment in recovery and towing. Pullforce team's extensive expertise and dedication to quality is the guarantee that our products will handle any challenging task.

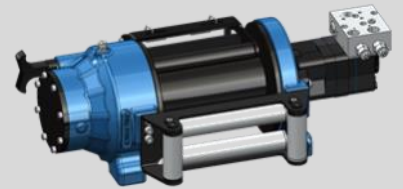
PULLFORCE winch models



PF-LS 5.8-00

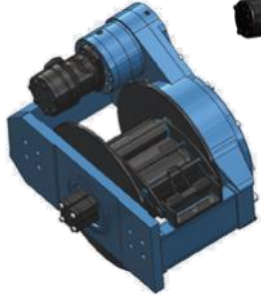


PF-LS 7.8-00

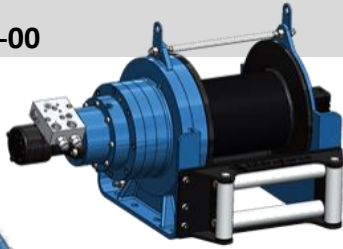


PF-LS 9.8-00

LIGHT SERIES



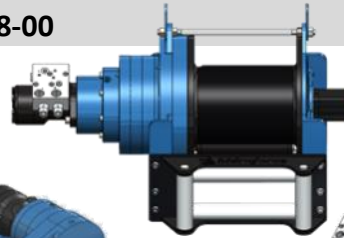
PF-MS 12-00-S



PF-MS 15-00



PF-MS 15-00-S

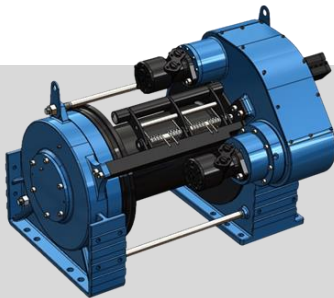


PF-MS 18-00



PF-MS 20-00

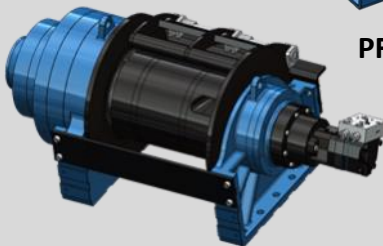
MEDIUM SERIES



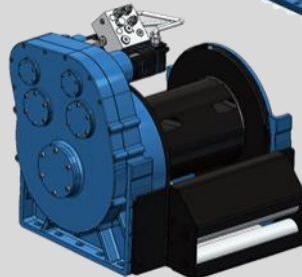
PF-HS 25-00



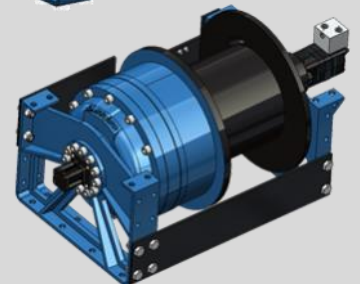
PF-HS 30-00



PF-HS 35-00



PF-HS 40-00

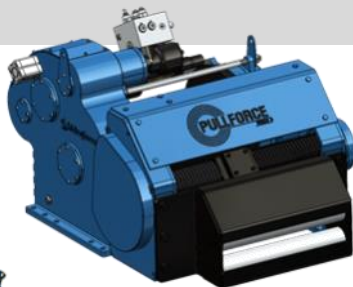


PF-HS 45-00

HEAVY SERIES



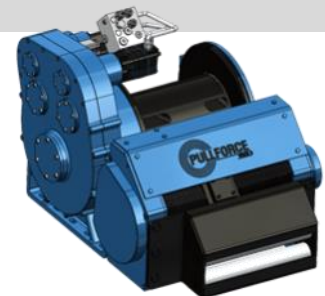
PF-SS 25-00



PF-SS 30-00



PF-SS 35-00



PF-SS 40-00

SPECIAL SERIES



PF-MLS 30-00-D



PF-MLS 35-00-D

MILITARY SERIES

PULLFORCE WINCH HYDRAULICS DESIGN

Recovery winches

- Up to 45 tons towing capacity
- Up to 85 m rope length
- Compatible with different type of vehicle
- Single/double towing speed option
- Roller fairleads and pressure rollers
- Optional pneumatic freespool



Fixed/variable displacement hydraulic pump

- Circuit element is powered by piston or gear pump
- 30-120 cm³/rev displacement
- Up to 210 bar pressure



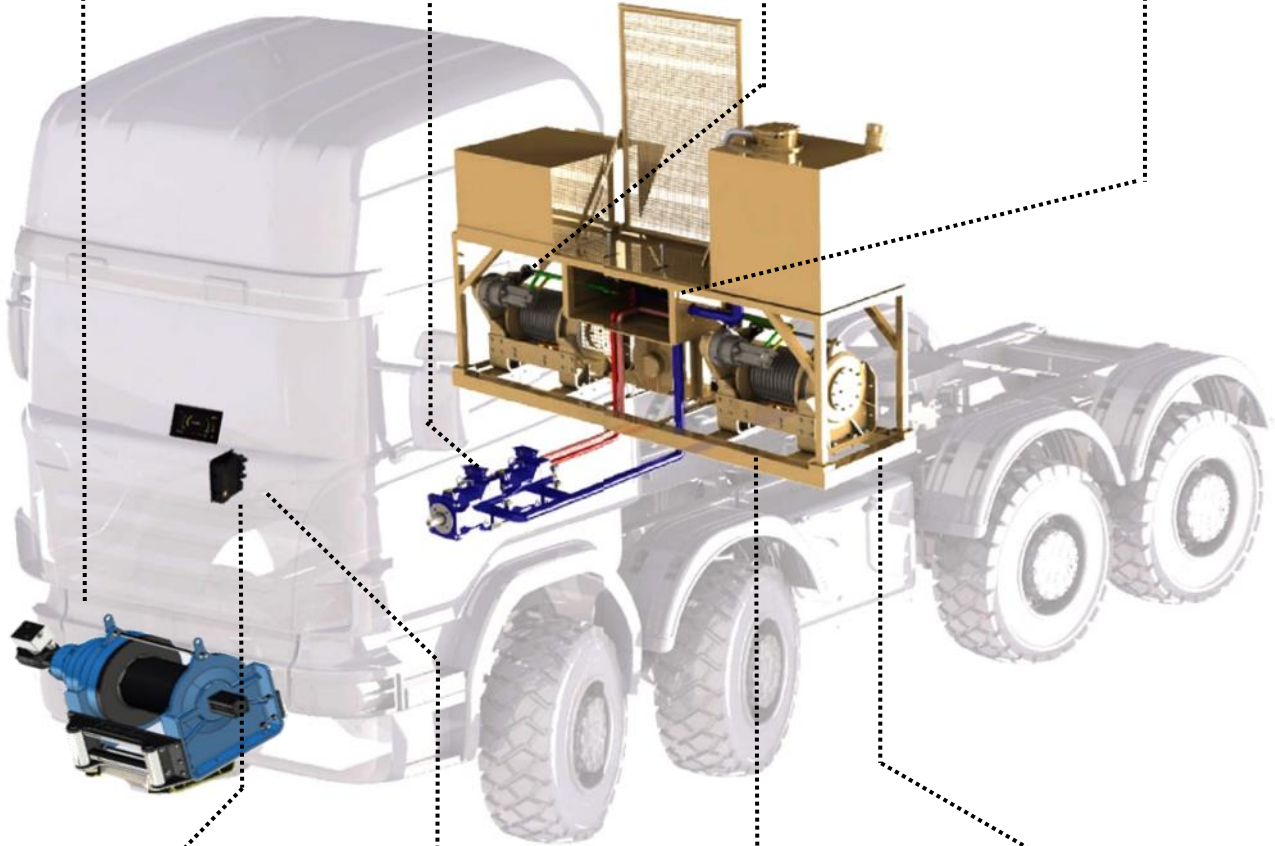
Fixed displacement hydraulic motors and motor valves

- Gear orbit motors
- 50-500 cc displacement
- Up to 210 bar pressure



Electro/hydraulic control valves

- Manual or electro-hydraulic activation
- Proportional or on-off type



ECU communication and IQAN monitoring and control units

- Automotive standards – IP67 Protection
- Compatible with the CAN software network



Radio control systems

- Automotive standards – IP67 Protection
- Design suitable for applications in various areas and situations



Hydraulic oil tank / oil coolers / filters

- Temperature control and oil quality
- Available upon request and adapted to project requirements



Towing winches

- Up to 45 tons towing capacity
- Up to 18m/min rope towing speed
- Up to 85 m rope length
- Compatible with different type of vehicle
- Single or double set
- Double/single towing speed options
- Roller fairleads and pressure rollers
- Optional pneumatic freespool
- Automatic fairlead rollers

PULLFORCE QUALITY

As a company, we apply the ISO 9001-2015 quality management system. Our efforts to present a world-class product to our customers begin in the early stages of the production process and continue further in the after-sales periods. Our constant attention to quality ensures that we produce the best products.

Registration of produced equipment units in a database for future backtracking and services

Maximum capacity and general performance tests performed by onsite testing hardware

Measurement check for minimum tolerance between internal and application of corrosion resistant coatings components

Production of the equipment according to relevant industry standards (EN 14492, SAE J706 etc)

Quality control and logging of incoming raw materials and components

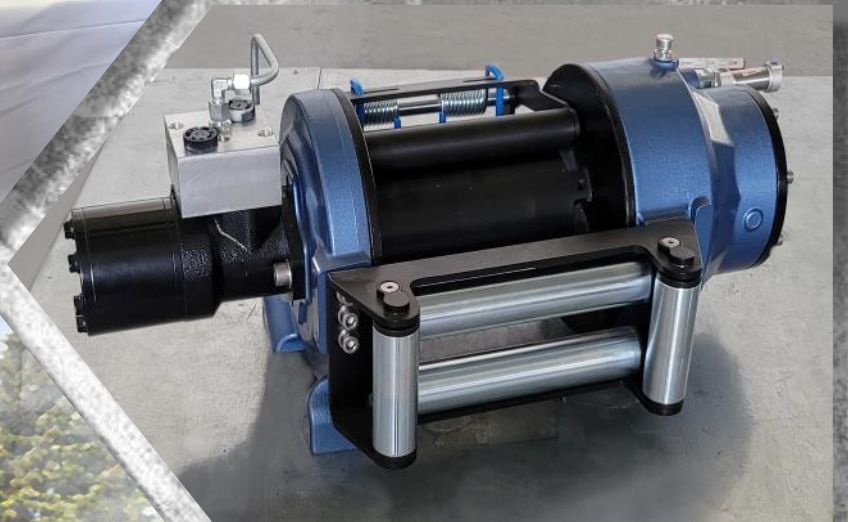
Periodic checks and calibration of manufacturing machinery stock and tools

Certification of the company by independent agencies

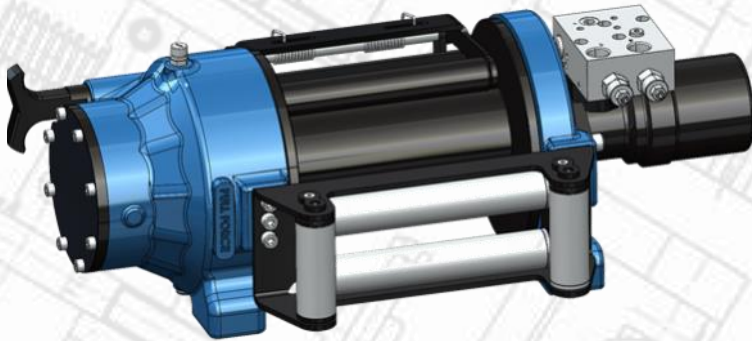




**LIGHT SERIES
WINCHES**



PF-LS 5.8-00



Towing and recovery winch for cars and commercial vehicles. This effective and durable model has a planetary gear design, disc brake system and reinforced aluminum cast body ready for challenging tasks. Different configurations are available upon request. Fully compliant with EN 14492 and SAE J706. Additional equipment and accessories are available as well.

ADDITIONAL EQUIPMENT

Standard package:

- Rope
- Roller fairlead
- Pressure roller
- Manual freespool
- Hydraulic inlet G 1/2"

Optional:

- Pneumatic freespool
- Radio control system
- ECU & IQAN equipment
- 16 pcs M12 mounting bolts
- Hydraulic control valve with manual lever

SPECIFICATIONS

Maximum pulling capacity	5800 kg 12786 lbs
Maximum rope length	50 m 164 ft
Recommended wire rope	12 mm 1/2" in
Hydraulic motor	315 cc 19,2 in ³
Maximum pump flow rate	60 l/min 15,85 gal/min
Max working pressure	175 bar 2538 psi
Winch	80 kg 176 lbs

LINE PULL AND LINE SPEED PERFORMANCE

Winding layer	Pulling capacity (kg/lbs)	Rope speed (m/min - ft/min)	Rope length (m/ft)
1	5800 / 12786	12,40 / 40,6	7 / 22
2	4775 / 10527	15 / 49,2	15,5 / 50
3	4060 / 8950	17,7 / 58	25,5 / 83,7
4	3530 / 7782	20,30 / 66,6	37 / 121,4
5	3125 / 6890	23 / 75,4	50 / 164

APPLICATION AREAS



Agricultural and forestry vehicles



Disaster relief vehicles



Tow trucks

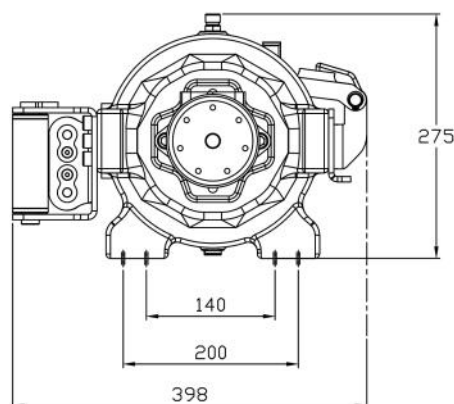
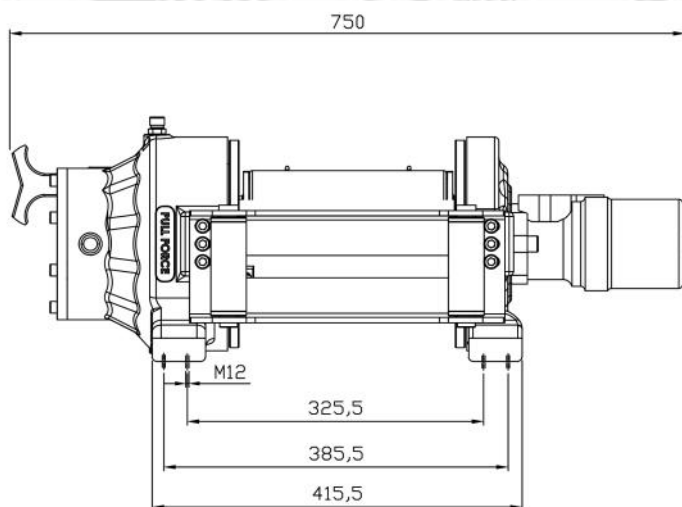


Military vehicles

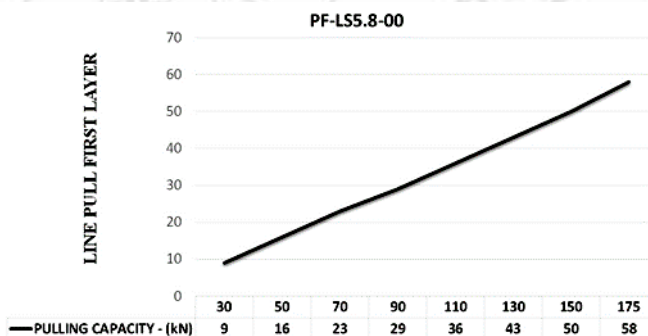


Offroad vehicles

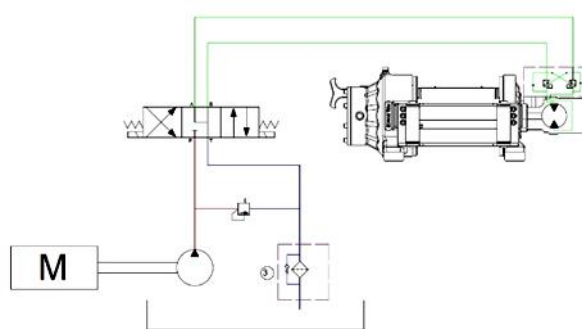
DIMENSIONS



HYDRAULIC PERFORMANCE



HYDRAULIC CURCUIT



FEATURES

- Gear Reduction:** 5.2 : 1
- Gear Type:** Single stage planetary
- Winch Construction:** Aluminum cast body reinforced with heat-treatment
- Braking:** Negative hydraulic disc brake system
- Drum Rotation:** Clockwise, or counter clockwise rotation as required
- Roller Guides:** Commercial type with large diameter rollers and grease ways
- Free spooling:** Standard manual lever freespool. Optional pneumatic freespool

ATTENTION

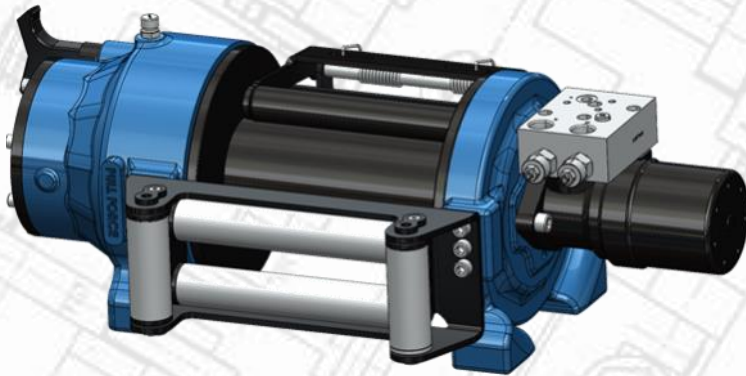


These winches should not be used for lifting and there should be at least 5 wraps of wire rope on the drum. The data shown are for maximum pressure and maximum flow and should be used as a reference only.

WARRANTY

Each new winch is guaranteed against defects in workmanship and material defects for a period of 24 months from date of purchase. Wire ropes are not included under warranty.

PF-LS 7.8-00



Towing and recovery winch for cars and commercial vehicles. This effective and durable model has a planetary gear design, disc brake system and reinforced aluminum cast body ready for challenging tasks. Different configurations are available upon request. Fully compliant with EN 14492 and SAE J706. Additional equipment and accessories are available as well.

ADDITIONAL EQUIPMENT

Standard package:

- Rope
- Roller fairlead
- Pressure roller
- Manual freespool
- Hydraulic inlet G 1/2"

Optional:

- Pneumatic freespool
- Radio control system
- ECU & IQAN equipment
- 16 pcs M12 mounting bolts
- Hydraulic control valve with manual lever

SPECIFICATIONS

Maximum pulling capacity	7800 kg 17196 lbs
Maximum rope length	33 m 108 ft
Recommended wire rope	14 mm 9/16" in
Hydraulic motor	400 cc 24,4 in ³
Maximum pump flow rate	60 l/min 15,85 gal/min
Max working pressure	175 bar 2538 psi
Winch	85 kg 188 lbs

LINE PULL AND LINE SPEED PERFORMANCE

Winding layer	Pulling capacity (kg/lbs)	Rope speed (m/min - ft/min)	Rope length (m/ft)
1	7800 / 17196	10,3 / 33,8	6 / 19,8
2	6261 / 13805	12,8 / 42,2	13,5 / 44,3
3	5230 / 11531	15,4 / 50,5	22,5 / 73,9
4	4490 / 9900	17,9 / 58,8	33 / 108,3

APPLICATION AREAS



Agricultural and forestry vehicles



Disaster relief vehicles



Tow trucks

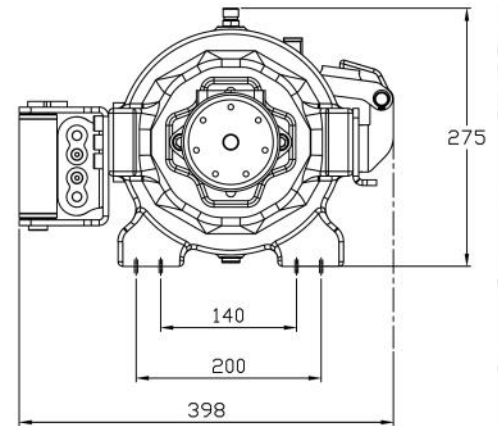
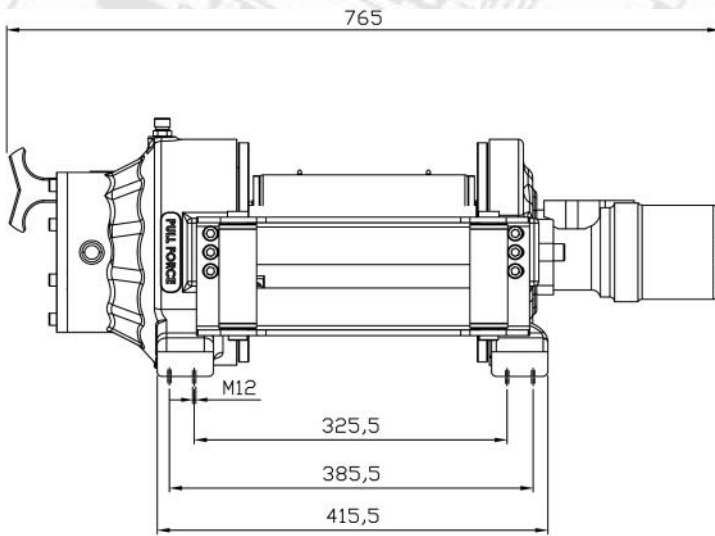


Military vehicles

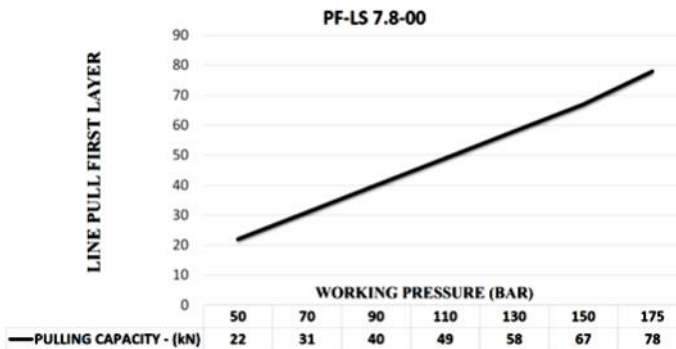


Offroad vehicles

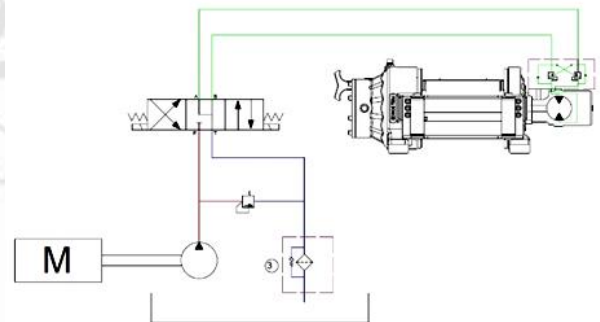
DIMENSIONS



HYDRAULIC PERFORMANCE



HYDRAULIC CURCUIT



FEATURES

- Gear Reduction:** 5.2 : 1
- Gear Type:** Single stage planetary
- Winch Construction:** Aluminum cast body reinforced with heat-treatment
- Braking:** Negative hydraulic disc brake system
- Drum Rotation:** Clockwise, or counter clockwise rotation as required
- Roller Guides:** Commercial type with large diameter rollers and grease ways
- Free spooling:** Standard manual lever freespool. Optional pneumatic freespool

ATTENTION

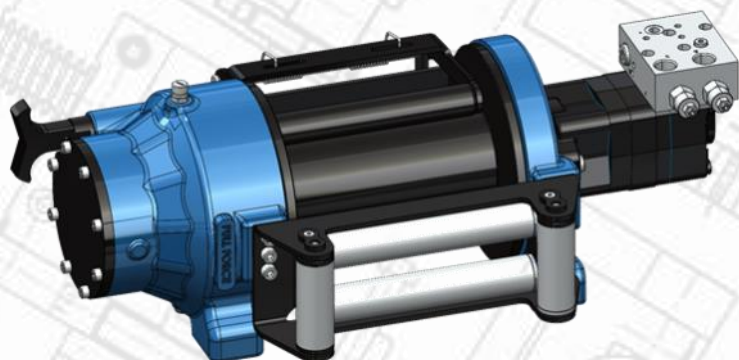


These winches should not be used for lifting and there should be at least 5 wraps of wire rope on the drum. The data shown are for maximum pressure and maximum flow and should be used as a reference only.

WARRANTY

Each new winch is guaranteed against defects in workmanship and material defects for a period of 24 months from date of purchase. Wire ropes are not included under warranty.

PF-LS 9.8-00



Towing and recovery winch for cars and commercial vehicles. This effective and durable model has a planetary gear design, disc brake system and reinforced aluminum cast body ready for challenging tasks. Different configurations are available upon request. Fully compliant with EN 14492 and SAE J706. Additional equipment and accessories are available as well.

ADDITIONAL EQUIPMENT

Standard package:

- Rope
- Roller fairlead
- Pressure roller
- Manual freespool
- Hydraulic inlet G 1/2"

Optional:

- Pneumatic freespool
- Radio control system
- ECU & IQAN equipment
- 16 pcs M12 mounting bolts
- Hydraulic control valve with manual lever

SPECIFICATIONS

Maximum pulling capacity	9800 kg 21605 lbs
Maximum rope length	33 m 108,3 ft
Recommended wire rope	14 mm 9/16"
High torque hydraulic motor	400 cc 24,4 in ³
Maximum pump flow rate	75 l/min 19,81 gal/min
Max working pressure	200 bar 2900 psi
Winch	85 kg 188 lbs

LINE PULL AND LINE SPEED PERFORMANCE

Winding layer	Pulling capacity (kg/lbs)	Rope speed (m/min - ft/min)	Rope length (m/ft)
1	9800 / 21605	12,5 / 41	6 / 19,7
2	7867 / 17343	16 / 52,5	13,5 / 44,3
3	6571 / 14486	18,3 / 60	22,5 / 73,8
4	5642 / 12438	21,4 / 70,2	33 / 108,2

APPLICATION AREAS



Agricultural and forestry vehicles



Disaster relief vehicles



Tow trucks

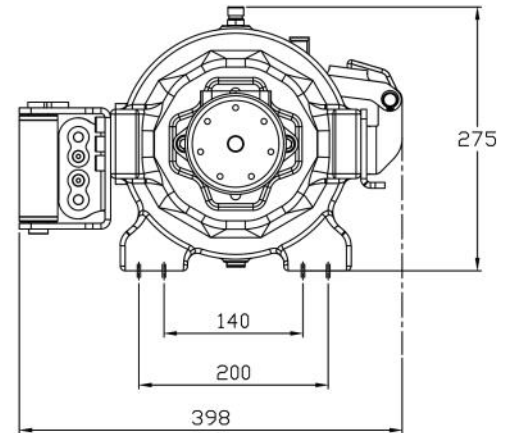
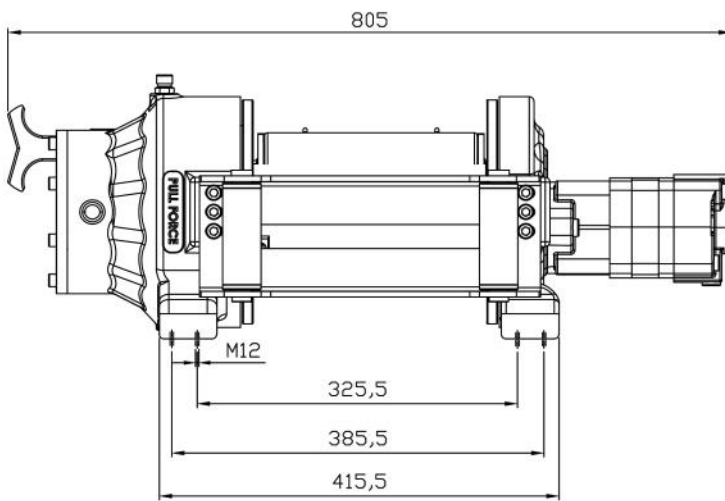


Military vehicles

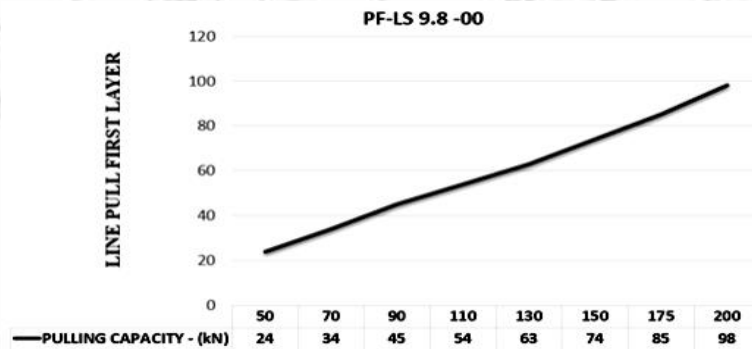


Offroad vehicles

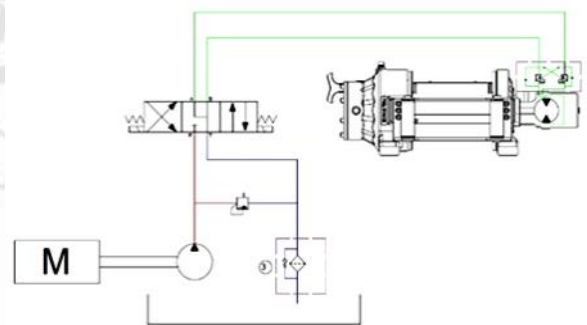
DIMENSIONS



HYDRAULIC PERFORMANCE



HYDRAULIC CURCUIT



FEATURES

- Gear Reduction:** 5.2 : 1
- Gear Type:** Single stage planetary
- Winch Construction:** Aluminum cast body reinforced with heat-treatment
- Braking:** Negative hydraulic disc brake system
- Drum Rotation:** Clockwise, or counter clockwise rotation as required
- Roller Guides:** Commercial type with large diameter rollers and grease ways
- Free spooling:** Standard manual lever freespool. Optional pneumatic freespool

ATTENTION



These winches should not be used for lifting and there should be at least 5 wraps of wire rope on the drum. The data shown are for maximum pressure and maximum flow and should be used as a reference only.

WARRANTY

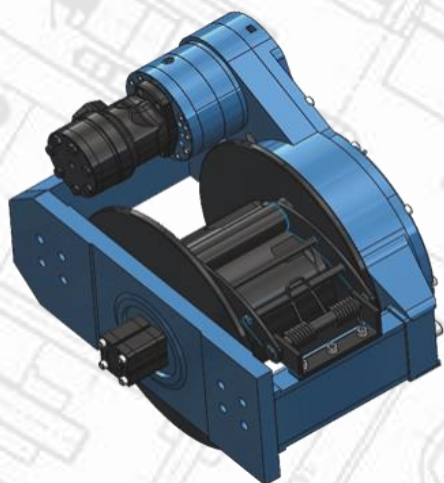
Each new winch is guaranteed against defects in workmanship and material defects for a period of 24 months from date of purchase. Wire ropes are not included under warranty.



**MEDIUM SERIES
WINCHES**



PF-MS 12-00-S



Towing and recovery winch for commercial and service vehicles with a vertically positioned motor. This model has a rigid planetary gear, disc brake system and steel cast body ready for challenging tasks. Different configurations are available upon request. Fully compliant with EN 14492 and SAE J706. Additional equipment and accessories are available as well.

ADDITIONAL EQUIPMENT

Standard package:

- Rope
- Roller fairlead
- Pressure roller
- Pneumatic freespool
- Hydraulic inlet G 1/2"

Optional:

- Radio control system
- ECU & IQAN equipment
- M16 mounting bolts
- Hydraulic control valve with manual lever

SPECIFICATIONS

Maximum pulling capacity	12000 kg 26455 lbs
Maximum rope length	43 m 141 ft
Recommended wire rope	16 mm 5/8" in
Hydraulic motor	200 cc 12,2 in ³
Maximum pump flow rate	60 l/min 15,85 gal/min
Max working pressure	175 bar 2538 psi
Winch	210 kg 463 lbs

LINE PULL AND LINE SPEED PERFORMANCE

Winding layer	Pulling capacity (kg/lbs)	Rope speed (m/min - ft/min)	Rope length (m/ft)
1	12000 / 26455	5,8 / 19	8,8 / 28,9
2	10451 / 23041	6,6 / 21,9	10,1 / 33,2
3	9257 / 20408	7,5 / 24,7	11,4 / 37,5
4	8307 / 18315	8,4 / 27,5	12,7 / 41,7

APPLICATION AREAS



Towing and recovery vehicles



Heavy tow trucks

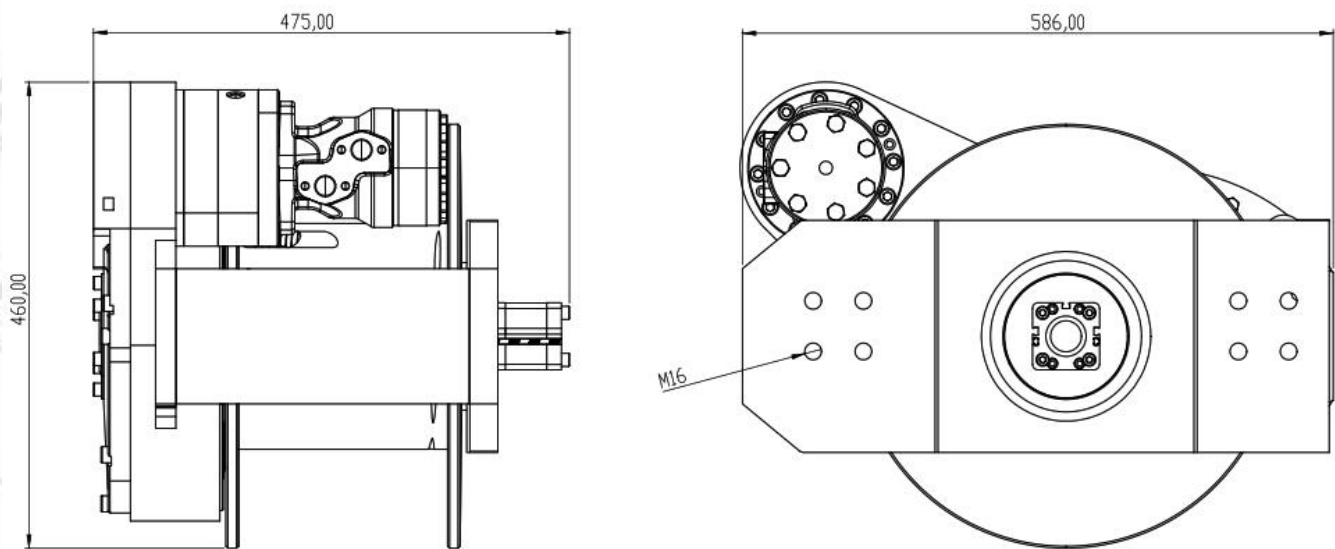


Agricultural and forestry vehicles



Military vehicles

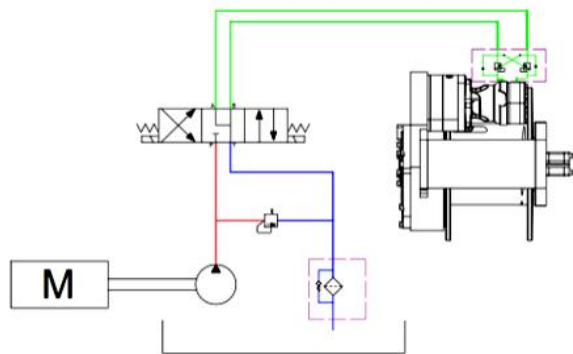
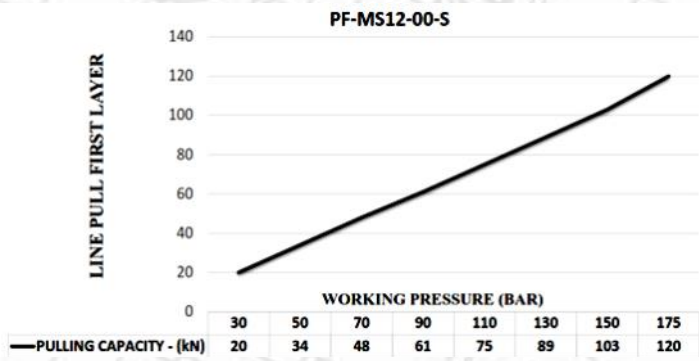
DIMENSIONS



Medium series

HYDRAULIC PERFORMANCE

HYDRAULIC CURCUIT



FEATURES

- Gear Reduction:** 41.25 : 1
- Gear Type:** Two stage planetary
- Winch Construction:** Steel cast body reinforced with heat-treatment
- Braking:** Negative hydraulic disc brake system
- Drum Rotation:** Clockwise, or counter clockwise rotation as required
- Roller Guides:** Commercial type with large diameter rollers and grease ways
- Free spooling:** Standard pneumatic freespool

ATTENTION

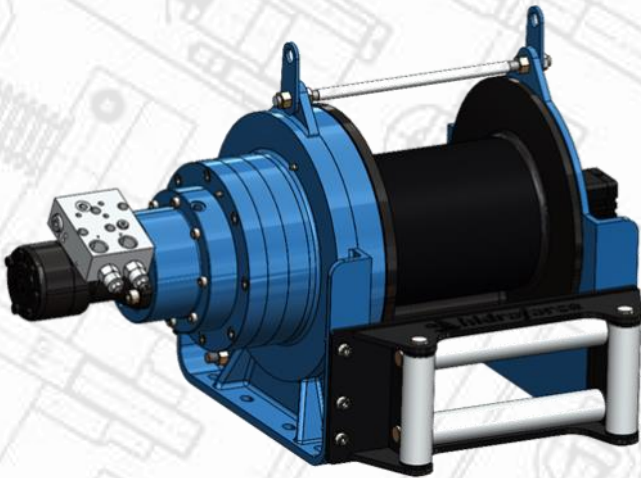
WARRANTY



These winches should not be used for lifting and there should be at least 5 wraps of wire rope on the drum. The data shown are for maximum pressure and maximum flow and should be used as a reference only.

Each new winch is guaranteed against defects in workmanship and material defects for a period of 24 months from date of purchase. Wire ropes are not included under warranty.

PF-MS 15-00



Towing and recovery winch for commercial and service vehicles. This model has a rigid planetary gear, disc brake system and steel cast body ready for challenging tasks. Different configurations are available upon request. Fully compliant with EN 14492 and SAE J706. Additional equipment and accessories are available as well.

ADDITIONAL EQUIPMENT

Standard package:

- Rope
- Roller fairlead
- Pressure roller
- Pneumatic freespool
- Hydraulic inlet G 1/2"

Optional:

- Radio control system
- ECU & IQAN equipment
- 8 pcs M14 mounting bolts
- Hydraulic control valve with manual lever

SPECIFICATIONS

Maximum pulling capacity	15000 kg 33069 lbs
Maximum rope length	48 m 157 ft
Recommended wire rope	18 mm 7/10" in
Hydraulic motor	200 cc 12,2 in ³
Maximum pump flow rate	60 l/min 15,85 gal/min
Max working pressure	175 bar 2538 psi
Winch	185 kg 408 lbs

LINE PULL AND LINE SPEED PERFORMANCE

Winding layer	Pulling capacity (kg/lbs)	Rope speed (m/min - ft/min)	Rope length (m/ft)
1	15000 / 33069	4,5 / 14,7	9,5 / 31,1
2	12875 / 28385	5,3 / 17,3	20,75 / 68,0
3	11275 / 24859	6 / 19,6	33,5 / 109,9
4	10030 / 22113	6,8 / 22,3	48 / 157,4

APPLICATION AREAS



Towing and recovery vehicles



Heavy tow trucks

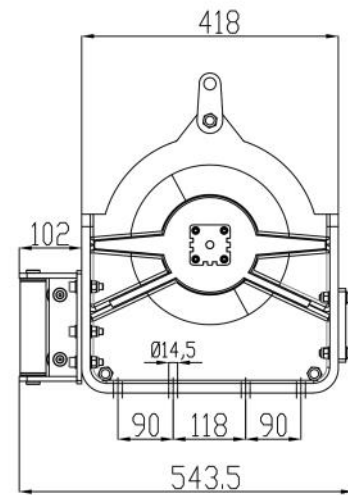
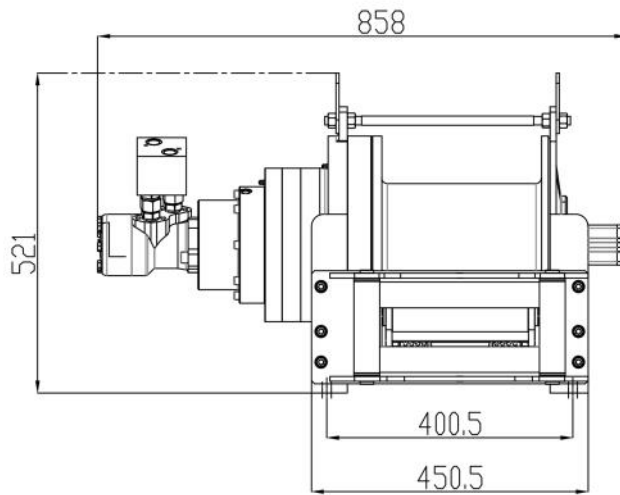


Agricultural and forestry vehicles



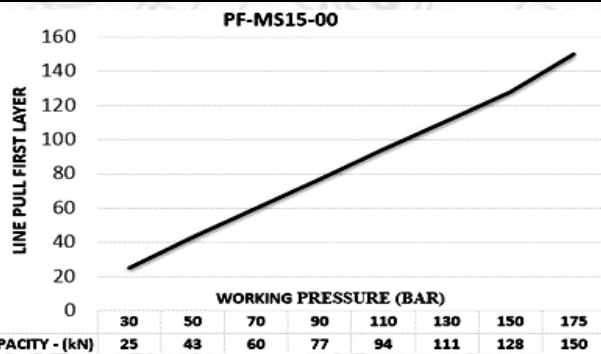
Military vehicles

DIMENSIONS

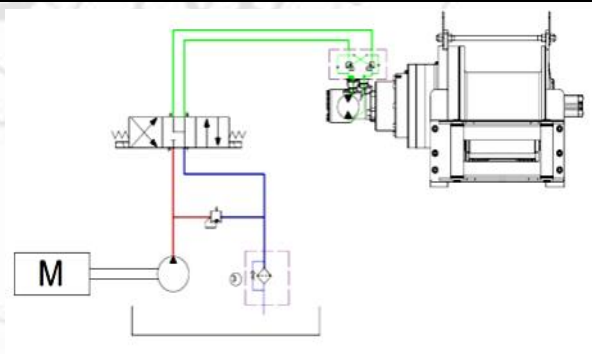


Medium series

HYDRAULIC PERFORMANCE



HYDRAULIC CURCUIT



FEATURES

- Gear Reduction:** 41.25 : 1
- Gear Type:** Two stage planetary
- Winch Construction:** Steel cast body reinforced with heat-treatment
- Braking:** Negative hydraulic disc brake system
- Drum Rotation:** Clockwise, or counter clockwise rotation as required
- Roller Guides:** Commercial type with large diameter rollers and grease ways
- Free spooling:** Standard pneumatic freespool

ATTENTION



These winches should not be used for lifting and there should be at least 5 wraps of wire rope on the drum. The data shown are for maximum pressure and maximum flow and should be used as a reference only.

WARRANTY

Each new winch is guaranteed against defects in workmanship and material defects for a period of 24 months from date of purchase. Wire ropes are not included under warranty.

PF-MS 15-00-S



Towing and recovery winch for commercial and service vehicles with a vertically positioned motor. This model has a rigid planetary gear, disc brake system and steel cast body ready for challenging tasks. Different configurations are available upon request. Fully compliant with EN 14492 and SAE J706. Additional equipment and accessories are available as well.

ADDITIONAL EQUIPMENT

Standard package:

- Rope
- Roller fairlead
- Pressure roller
- Pneumatic freespool
- Hydraulic inlet G 1/2"

Optional:

- Radio control system
- ECU & IQAN equipment
- M16 mounting bolts
- Hydraulic control valve with manual lever

SPECIFICATIONS

Maximum pulling capacity	15000 kg 33069 lbs
Maximum rope length	37 m 121 ft
Recommended wire rope	18 mm 7/10" in
Hydraulic motor	250 cc 15,2 in ³
Maximum pump flow rate	60 l/min 15,85 gal/min
Max working pressure	175 bar 2538 psi
Winch	210 kg 462 lbs

LINE PULL AND LINE SPEED PERFORMANCE

Winding layer	Pulling capacity (kg/lbs)	Rope speed (m/min - ft/min)	Rope length (m/ft)
1	15000 / 33069	4,6 / 15,2	7,5 / 24,7
2	13064 / 28802	5,3 / 17,5	8,7 / 28,7
3	11571 / 25510	6 / 19,7	10 / 32,8
4	10384 / 22894	6,7 / 22	11,2 / 36,9

APPLICATION AREAS



Towing and recovery vehicles



Heavy tow trucks

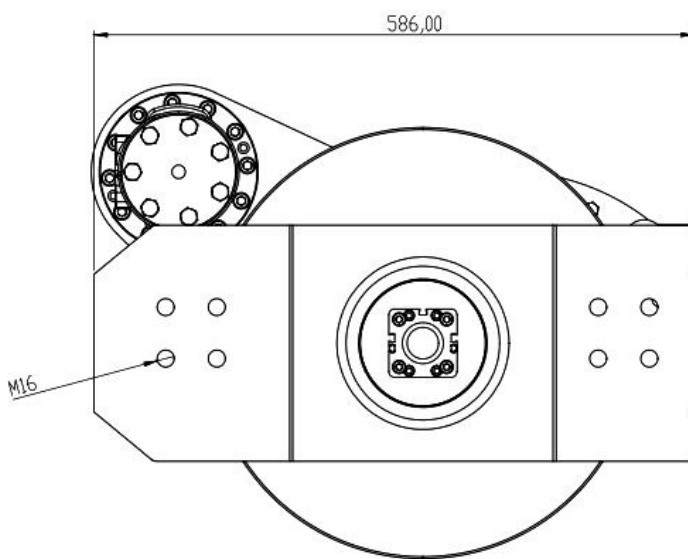
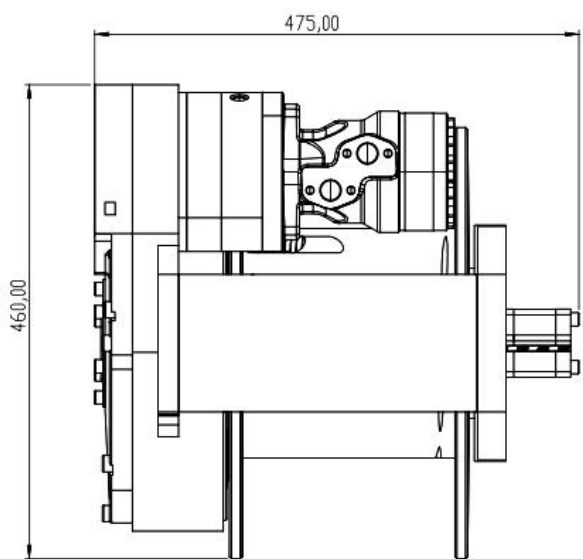


Agricultural and forestry vehicles



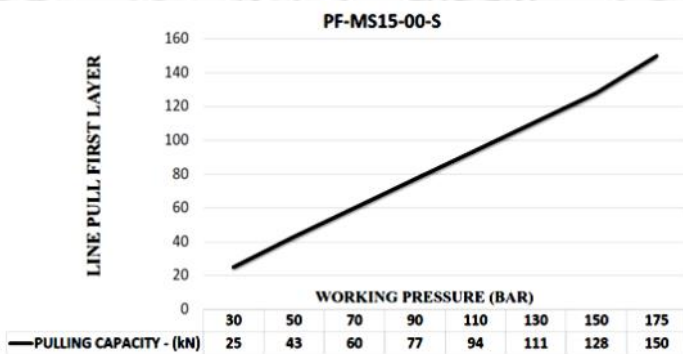
Military vehicles

DIMENSIONS

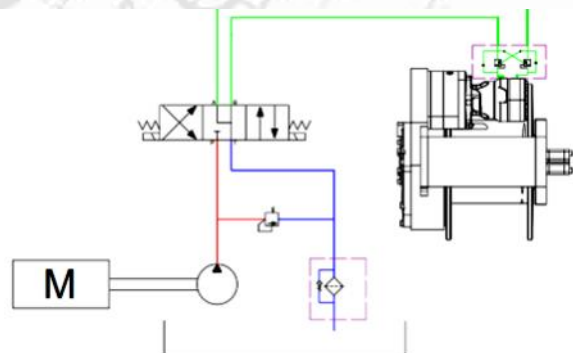


Medium series

HYDRAULIC PERFORMANCE



HYDRAULIC CURCUIT



FEATURES

- Gear Reduction:** 41.25 : 1
- Gear Type:** Two stage planetary
- Winch Construction:** Steel cast body reinforced with heat-treatment
- Braking:** Negative hydraulic disc brake system
- Drum Rotation:** Clockwise, or counter clockwise rotation as required
- Roller Guides:** Commercial type with large diameter rollers and grease ways
- Free spooling:** Standard pneumatic freespool

ATTENTION

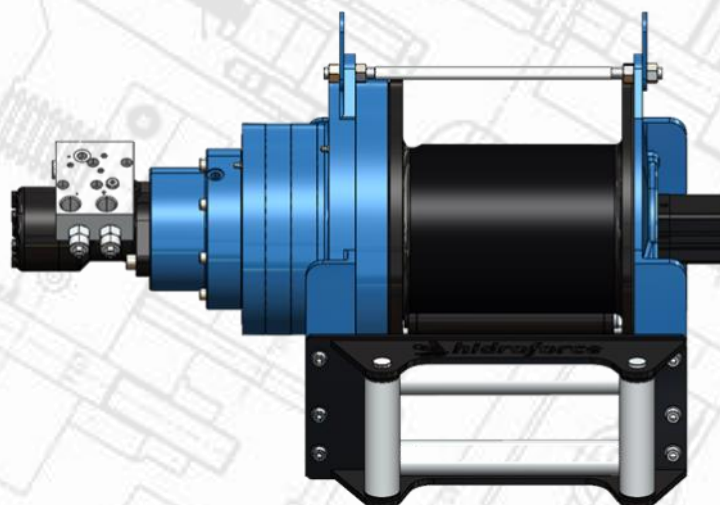


These winches should not be used for lifting and there should be at least 5 wraps of wire rope on the drum. The data shown are for maximum pressure and maximum flow and should be used as a reference only.

WARRANTY

Each new winch is guaranteed against defects in workmanship and material defects for a period of 24 months from date of purchase. Wire ropes are not included under warranty.

PF-MS 18-00



Towing and recovery winch for commercial and service vehicles. This model has a rigid planetary gear, disc brake system and steel cast body ready for challenging tasks. Different configurations are available upon request. Fully compliant with EN 14492 and SAE J706. Additional equipment and accessories are available as well.

ADDITIONAL EQUIPMENT

Standard package:

- Rope
- Roller fairlead
- Pressure roller
- Pneumatic freespool
- Hydraulic inlet G 1/2"

Optional:

- Radio control system
- ECU & IQAN equipment
- 8 pcs M14 mounting bolts
- Hydraulic control valve with manual lever

SPECIFICATIONS

Maximum pulling capacity	18000 kg 39683 lbs
Maximum rope length	45 m 147,6 ft
Recommended wire rope	20 mm 25/32 "
Hydraulic motor	250 cc 15,25 in ³
Maximum pump flow rate	60 l/min 15,85 gal/min
Max working pressure	175 bar 2538 psi
Winch	205 kg 452 lbs

LINE PULL AND LINE SPEED PERFORMANCE

Winding layer	Pulling capacity (kg/lbs)	Rope speed (m/min - ft/min)	Rope length (m/ft)
1	18000 / 39683	3,85 / 12,6	9 / 29,5
2	15230 / 33576	4,5 / 14,7	19,6 / 64,3
3	13200 / 29101	5,1 / 16,7	31,85 / 104,5
4	11647 / 25677	5,75 / 18,8	45 / 147,6

APPLICATION AREAS



Towing and recovery vehicles



Heavy tow trucks

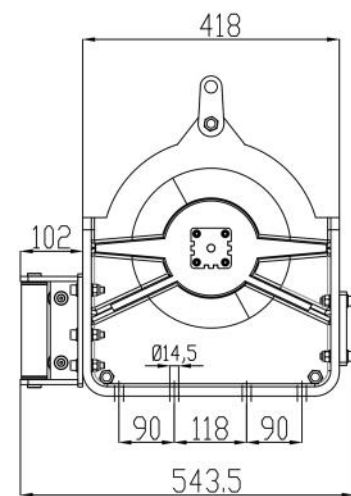
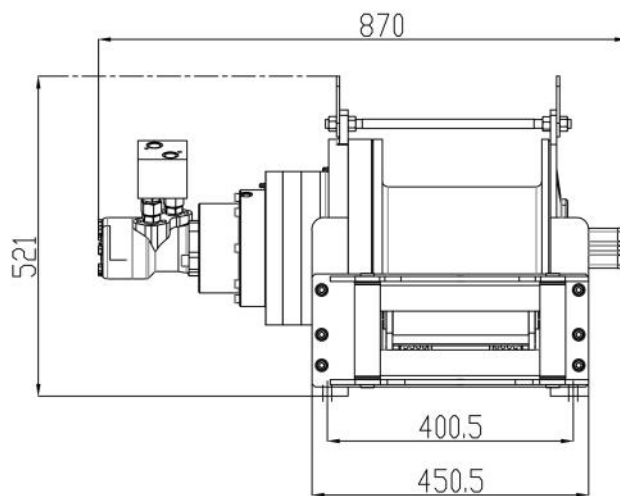


Agricultural and forestry vehicles



Military vehicles

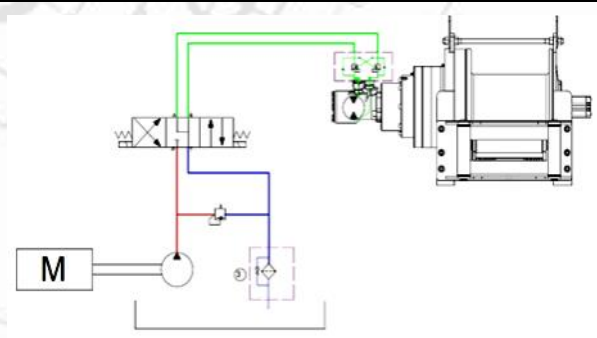
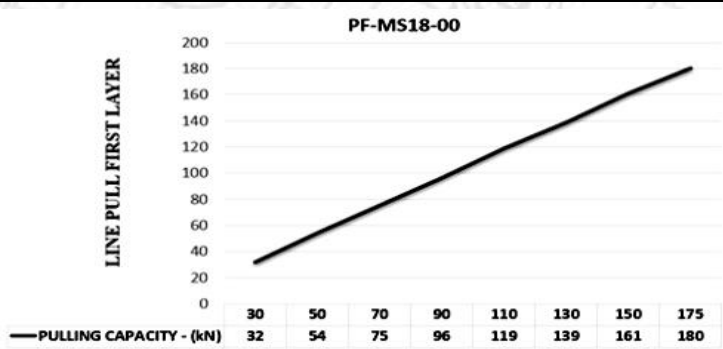
DIMENSIONS



Medium series

HYDRAULIC PERFORMANCE

HYDRAULIC CURCUIT



FEATURES

- Gear Reduction:** 41.25 : 1
- Gear Type:** Two stage planetary
- Winch Construction:** Steel cast body reinforced with heat-treatment
- Braking:** Negative hydraulic disc brake system
- Drum Rotation:** Clockwise, or counter clockwise rotation as required
- Roller Guides:** Commercial type with large diameter rollers and grease ways
- Free spooling:** Standard pneumatic freespool

ATTENTION

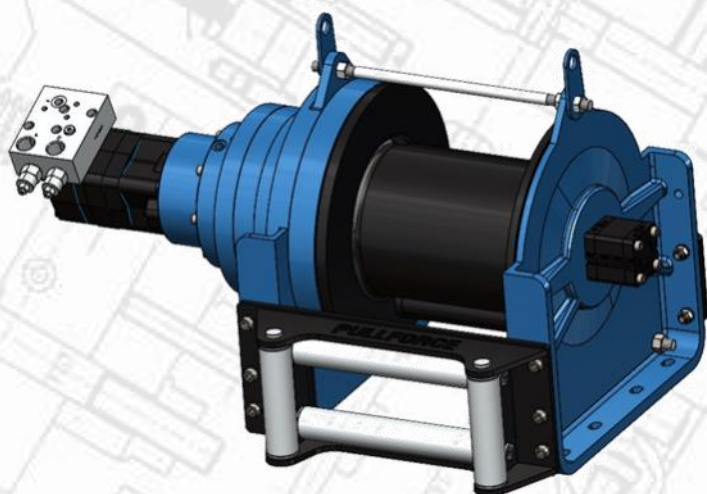
WARRANTY



These winches should not be used for lifting and there should be at least 5 wraps of wire rope on the drum. The data shown are for maximum pressure and maximum flow and should be used as a reference only.

Each new winch is guaranteed against defects in workmanship and material defects for a period of 24 months from date of purchase. Wire ropes are not included under warranty.

PF-MS 20-00



Towing and recovery winch for commercial and service vehicles. This model has a rigid planetary gear, disc brake system and steel cast body ready for challenging tasks. Different configurations are available upon request. Fully compliant with EN 14492 and SAE J706. Additional equipment and accessories are available as well.

ADDITIONAL EQUIPMENT

Standard package:

- Rope
- Roller fairlead
- Pressure roller
- Pneumatic freespool
- Hydraulic inlet G 1/2"

Optional:

- Radio control system
- ECU & IQAN equipment
- 8 pcs M14 mounting bolts
- Hydraulic control valve with manual lever

SPECIFICATIONS

Maximum pulling capacity	20000 kg 44092 lbs
Maximum rope length	40 m 131 ft
Recommended wire rope	22 mm 7/8" in
High-torque hydraulic motor	200 cc 12,20 in ³
Maximum pump flow rate	75 l/min 19,81 gal/min
Max working pressure	190 bar 2755 psi
Winch	205 kg 452 lbs

LINE PULL AND LINE SPEED PERFORMANCE

Winding layer	Pulling capacity (kg/lbs)	Rope speed (m/min - ft/min)	Rope length (m/ft)
1	20000 / 44092	6 / 19,6	7,6 / 25
2	16690 / 36798	7,3 / 23,9	16,85 / 55,3
3	14322 / 31575	8,5 / 27,8	27,6 / 90,5
4	12542 / 27650	9,7 / 31,8	40 / 131,2

APPLICATION AREAS



Towing and recovery vehicles



Heavy tow trucks

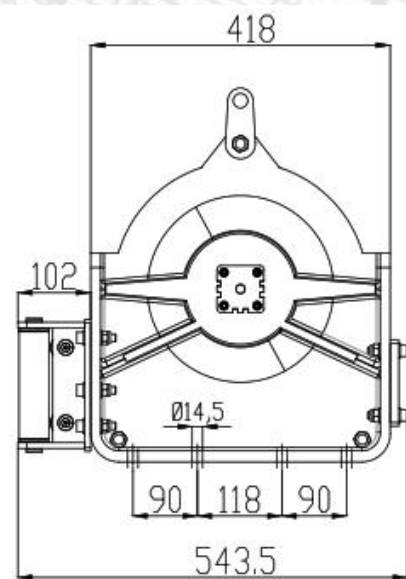
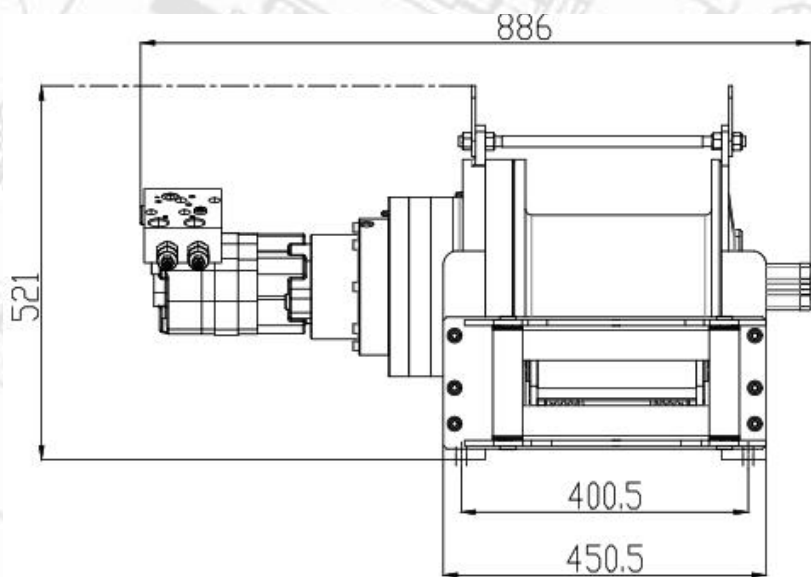


Agricultural and forestry vehicles



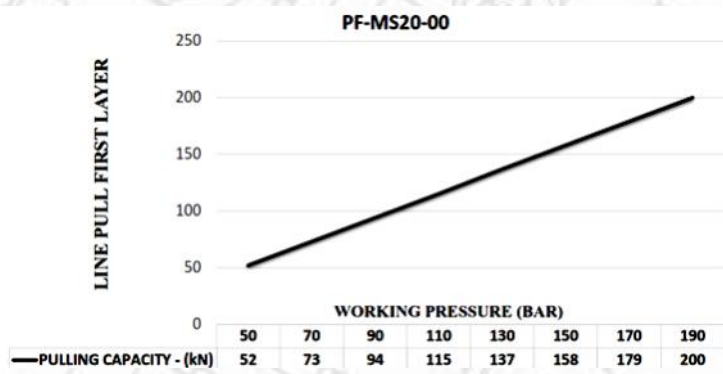
Military vehicles

DIMENSIONS

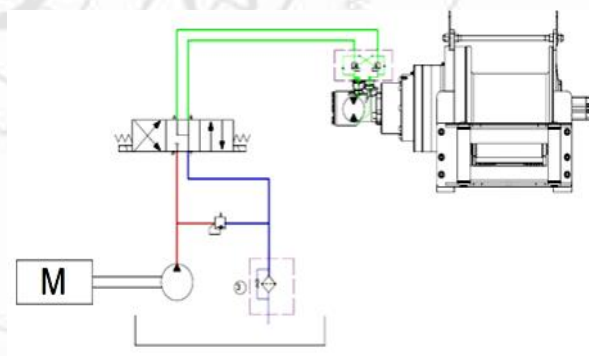


Medium series

HYDRAULIC PERFORMANCE



HYDRAULIC CURCUIT



FEATURES

- Gear Reduction:** 41.25 : 1
- Gear Type:** Two stage planetary
- Winch Construction:** Steel cast body reinforced with heat-treatment
- Braking:** Negative hydraulic disc brake system
- Drum Rotation:** Clockwise, or counter clockwise rotation as required
- Roller Guides:** Commercial type with large diameter rollers and grease ways
- Free spooling:** Standard pneumatic freespool

ATTENTION



These winches should not be used for lifting and there should be at least 5 wraps of wire rope on the drum. The data shown are for maximum pressure and maximum flow and should be used as a reference only.

WARRANTY

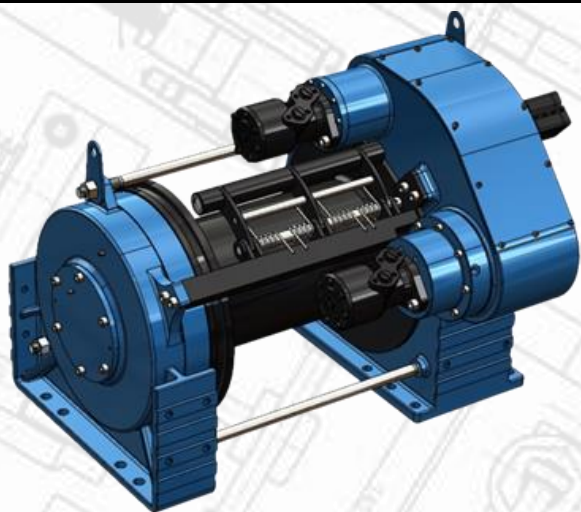
Each new winch is guaranteed against defects in workmanship and material defects for a period of 24 months from date of purchase. Wire ropes are not included under warranty.



**HEAVY SERIES
WINCHES**



PF-HS 25-00



Towing and recovery winch for commercial and service vehicles. This model has a rigid planetary gear, disc brake system and steel cast body ready for challenging tasks. Different configurations are available upon request. Fully compliant with EN 14492 and SAE J706. Additional equipment and accessories are available as well.

ADDITIONAL EQUIPMENT

Standard package:

- Rope
- Roller fairlead
- Pressure roller
- Pneumatic freespool
- Hydraulic inlet G 1/2"

Optional:

- Radio control system
- ECU & IQAN equipment
- Automatic roller fairlead
- 18 pcs M20 mounting bolts
- Double speed working mode
- Hydraulic control valve with manual lever

SPECIFICATIONS

Maximum pulling capacity	25000 kg 55115 lbs
Maximum rope length	67 m 220 ft
Recommended wire rope	24 mm 15/16" in
Hydraulic motor	130 cc 7,93 in ³
Maximum pump flow rate	80 l/min 21,1 gal/min
Max working pressure	160 bar 2320 psi
Winch	465 kg 1025 lbs

LINE PULL AND LINE SPEED PERFORMANCE

Winding layer	Pulling capacity (kg/lbs)	Rope speed (m/min - ft/min)	Rope length (m/ft)
1	25000 / 55115	3,2 / 10,5	13,25 / 43,4
2	21153 / 46636	3,8 / 12,4	28,9 / 94,8
3	18333 / 40418	4,5 / 14,7	46,9 / 153,8
4	16176 / 35663	5,2 / 17	67 / 220

APPLICATION AREAS



Heavy-duty tow trucks



Lowbed semi-trailers



Towing and recovery vehicles

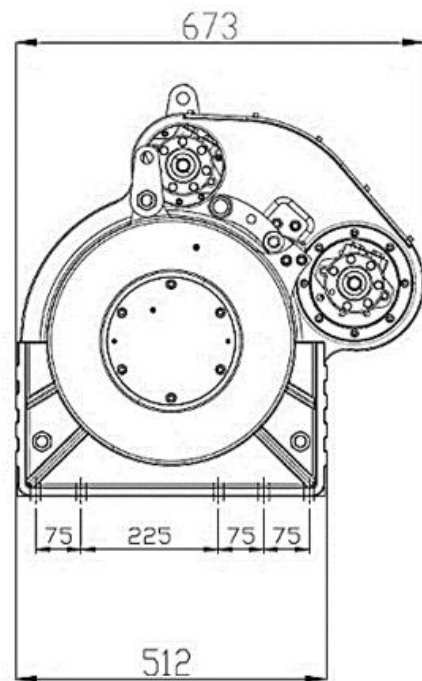
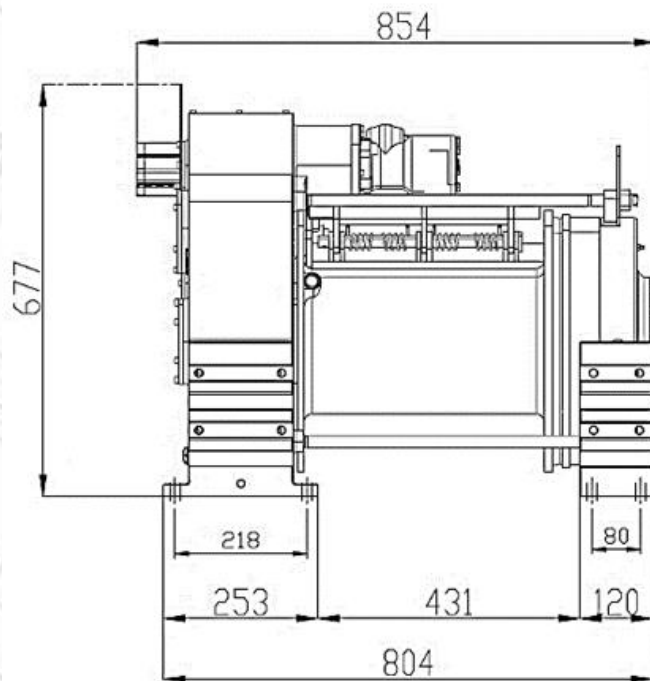


Trailers



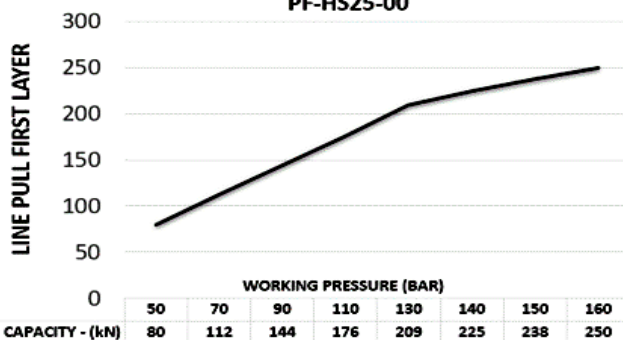
Offroad trucks

DIMENSIONS

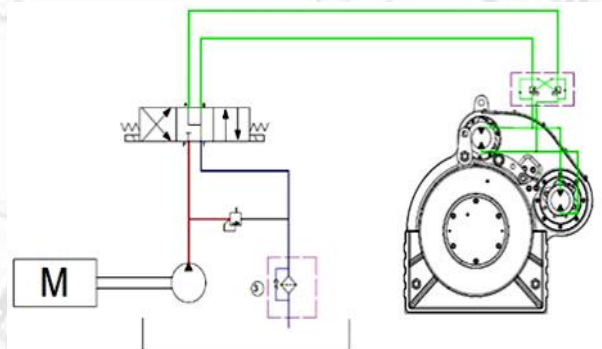


HYDRAULIC PERFORMANCE

PF-HS25-00



HYDRAULIC CURCUIT



Heavy series

FEATURES

- Gear Reduction:** 71.88 : 1
- Gear Type:** Single stage planetary with specially designed gear system
- Winch Construction:** Steel cast body reinforced with heat-treatment
- Braking:** Negative hydraulic disc brake system
- Drum Rotation:** Clockwise, or counter clockwise rotation as required
- Roller Guides:** Commercial type with large diameter rollers and grease ways
- Free spooling:** Standard pneumatic freespool

ATTENTION

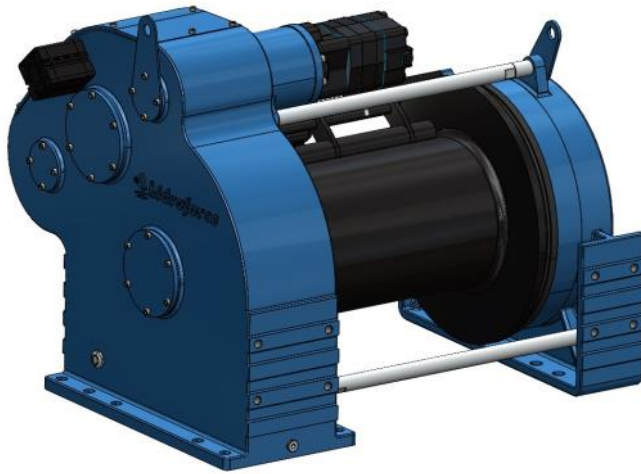


These winches should not be used for lifting and there should be at least 5 wraps of wire rope on the drum. The data shown are for maximum pressure and maximum flow and should be used as a reference only.

WARRANTY

Each new winch is guaranteed against defects in workmanship and material defects for a period of 24 months from date of purchase. Wire ropes are not included under warranty.

PF-HS 30-00



Towing and recovery winch for commercial and service vehicles. This model has a rigid planetary gear, disc brake system and steel cast body ready for challenging tasks. Different configurations are available upon request. Fully compliant with EN 14492 and SAE J706. Additional equipment and accessories are available as well.

ADDITIONAL EQUIPMENT

Standard package:

- Rope
- Roller fairlead
- Pressure roller
- Pneumatic freespool
- Hydraulic inlet G 1/2"

Optional:

- Radio control system
- ECU & IQAN equipment
- Automatic roller fairlead
- 18 pcs M20 mounting bolts
- Double speed working mode
- Hydraulic control valve with manual lever

SPECIFICATIONS

Maximum pulling capacity	30000 kg 66138 lbs
Maximum rope length	67 m 220 ft
Recommended wire rope	24 mm 15/16" in
High-torque hydraulic motor	130 cc 7,93 in ³
Maximum pump flow rate	75 l/min 19,81 gal/min
Max working pressure	200 bar 2900 psi
Winch	500 kg 1100 lbs

LINE PULL AND LINE SPEED PERFORMANCE

Winding layer	Pulling capacity (kg/lbs)	Rope speed (m/min - ft/min)	Rope length (m/ft)
1	30000 / 66138	2,5 / 8,2	13,25 / 43,4
2	25384 / 55963	3,1 / 10,1	28,9 / 94,8
3	22000 / 48501	3,6 / 11,8	46,9 / 153
4	19411 / 42795	4,2 / 13,7	67 / 220

APPLICATION AREAS



Heavy-duty tow trucks



Lowbed semi-trailers



Towing and recovery vehicles

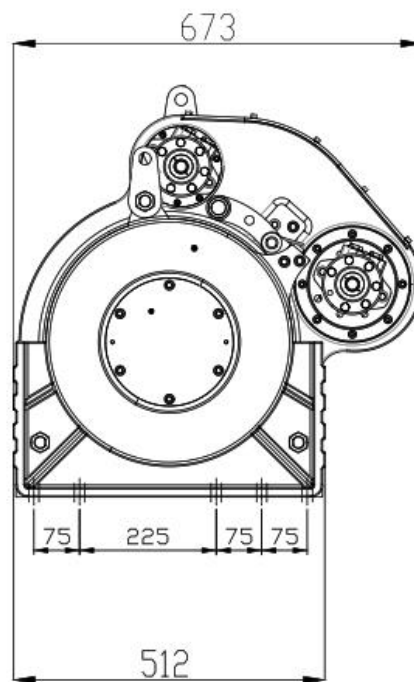
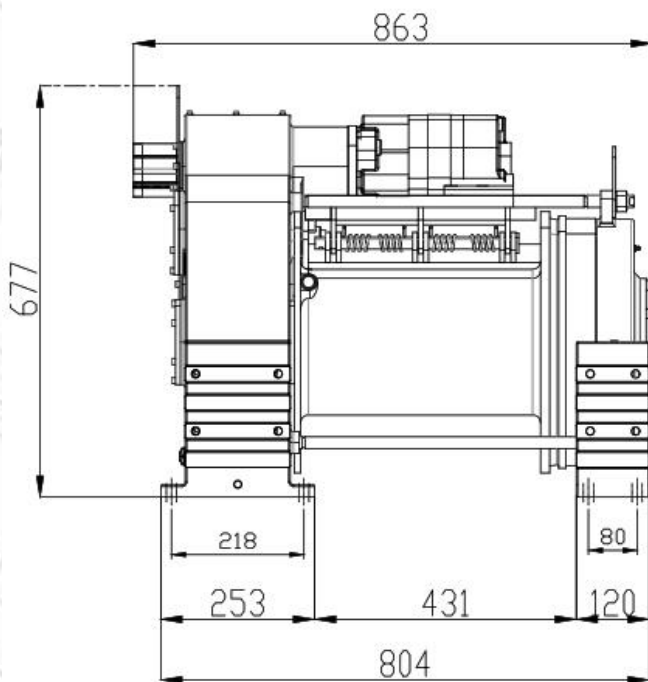


Trailers

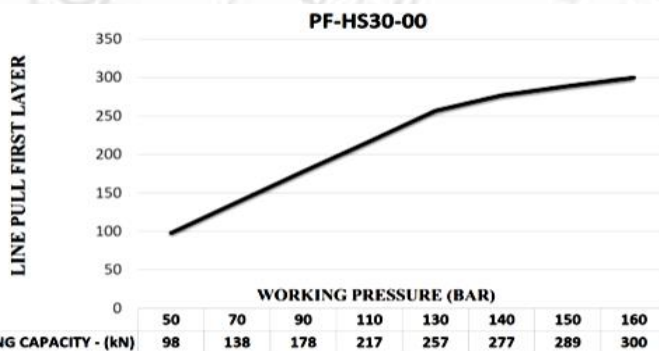


Offroad trucks

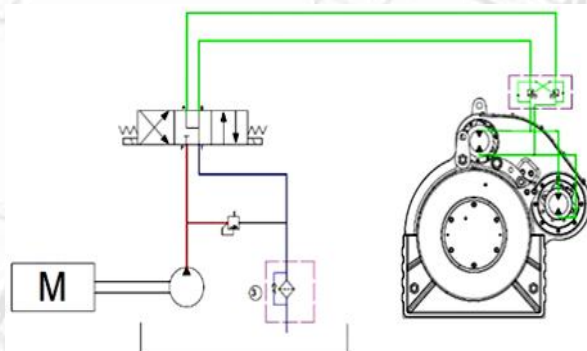
DIMENSIONS



HYDRAULIC PERFORMANCE



HYDRAULIC CURCUIT



Heavy series

FEATURES

- Gear Reduction:** 71.88 : 1
- Gear Type:** Single stage planetary with specially designed gear system
- Winch Construction:** Steel cast body reinforced with heat-treatment
- Braking:** Negative hydraulic disc brake system
- Drum Rotation:** Clockwise, or counter clockwise rotation as required
- Roller Guides:** Commercial type with large diameter rollers and grease ways
- Free spooling:** Standard manual lever freespool. Optional pneumatic freespool

ATTENTION

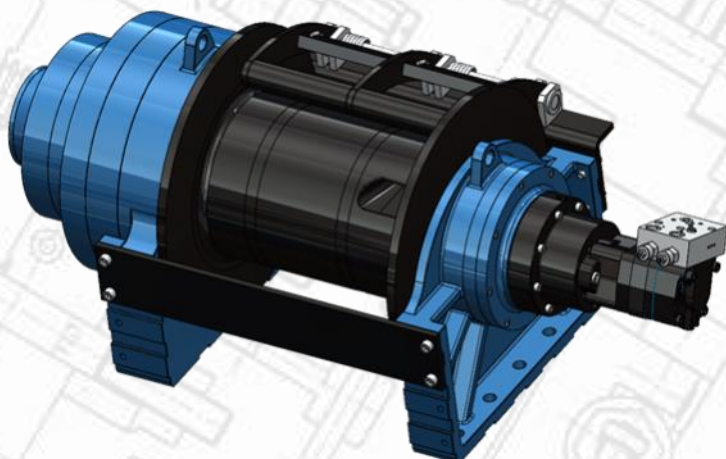


These winches should not be used for lifting and there should be at least 5 wraps of wire rope on the drum. The data shown are for maximum pressure and maximum flow and should be used as a reference only.

WARRANTY

Each new winch is guaranteed against defects in workmanship and material defects for a period of 24 months from date of purchase. Wire ropes are not included under warranty.

PF-HS 35-00



Towing and recovery winch for commercial and service vehicles. This model has a rigid planetary gear, disc brake system and steel cast body ready for challenging tasks. Different configurations are available upon request. Fully compliant with EN 14492 and SAE J706. Additional equipment and accessories are available as well.

ADDITIONAL EQUIPMENT

Standard package:

- Rope
- Roller fairlead
- Pressure roller
- Pneumatic freespool
- Hydraulic inlet G 1/2"

Optional:

- Radio control system
- ECU & IQAN equipment
- 10 pcs M22 mounting bolts
- Hydraulic control valve with manual lever

SPECIFICATIONS

Maximum pulling capacity	35000 kg 77161 lbs
Maximum rope length	69 m 226,4 ft
Recommended wire rope	26 mm 1 1/32" in
High torque hydraulic motor	200 cc 12,2 in ³
Maximum pump flow rate	75 l/min 19,81 gal/min
Max working pressure	175 bar 2538 psi
Winch	540 kg 1190 lbs

LINE PULL AND LINE SPEED PERFORMANCE

Winding layer	Pulling capacity (kg/lbs)	Rope speed (m/min - ft/min)	Rope length (m/ft)
1	35000 / 77161	3 / 9,8	13,7 / 44,9
2	29693 / 65463	3,6 / 11,8	29,85 / 97,9
3	25784 / 56845	4,2 / 13,7	48,46 / 159
4	22785 / 50232	4,7 / 15,4	69 / 226,4

APPLICATION AREAS



Heavy-duty tow trucks



Lowbed semi-trailers



Towing and recovery vehicles

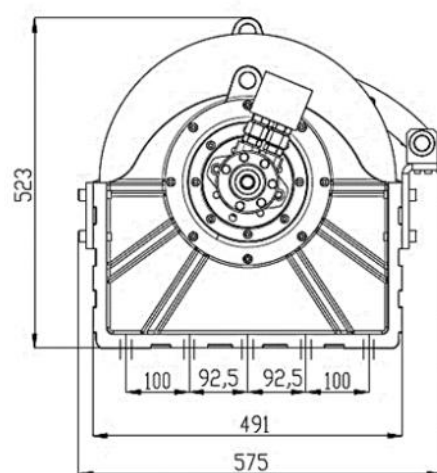
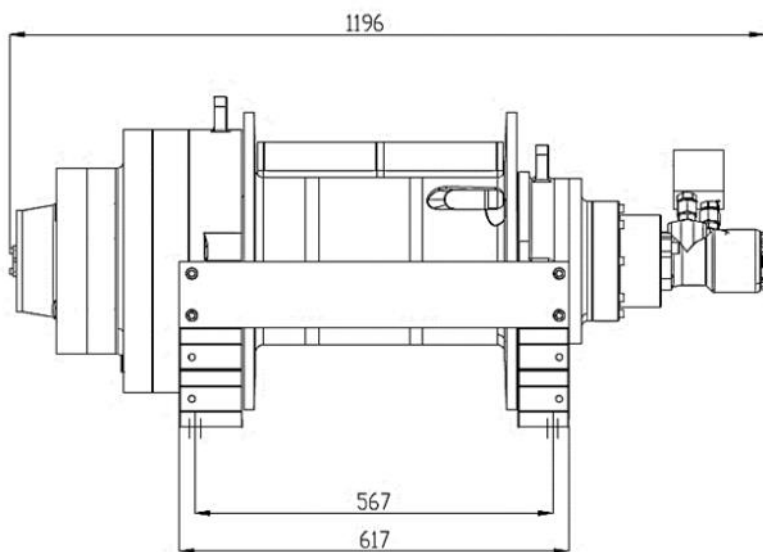


Trailers



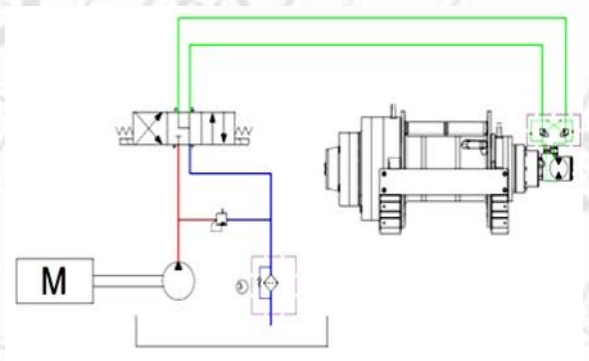
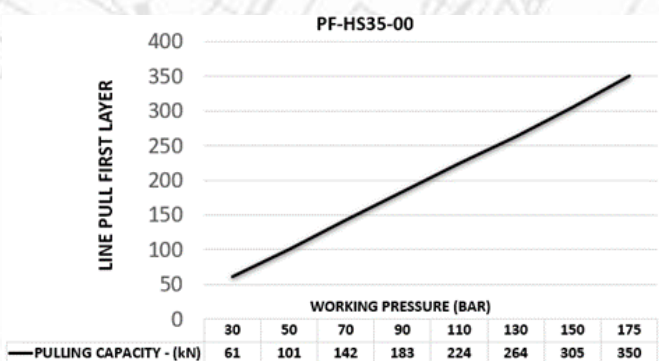
Offroad trucks

DIMENSIONS



HYDRAULIC PERFORMANCE

HYDRAULIC CURCUIT



Heavy series

FEATURES

- Gear Reduction:** 104.33 : 1
- Gear Type:** Three stage planetary
- Winch Construction:** Steel cast body reinforced with heat-treatment
- Braking:** Negative hydraulic disc brake system
- Drum Rotation:** Clockwise, or counter clockwise rotation as required
- Roller Guides:** Commercial type with large diameter rollers and grease ways
- Free spooling:** Standard pneumatic freespool

ATTENTION

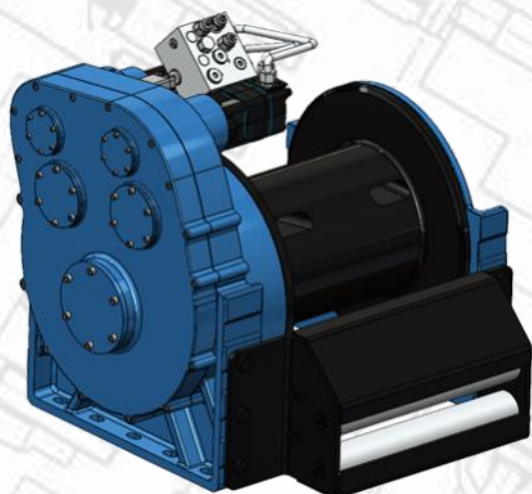
WARRANTY



These winches should not be used for lifting and there should be at least 5 wraps of wire rope on the drum. The data shown are for maximum pressure and maximum flow and should be used as a reference only.

Each new winch is guaranteed against defects in workmanship and material defects for a period of 24 months from date of purchase. Wire ropes are not included under warranty.

PF-HS 40-00



Towing and recovery winch for commercial and service vehicles. This model has a rigid planetary gear, disc brake system and steel cast body ready for challenging tasks. Different configurations are available upon request. Fully compliant with EN 14492 and SAE J706. Additional equipment and accessories are available as well.

ADDITIONAL EQUIPMENT

Standard package:

- Rope
- Roller fairlead
- Pressure roller
- Pneumatic freespool
- Hydraulic inlet G 1/2"

Optional:

- Radio control system
- ECU & IQAN equipment
- Automatic roller fairlead
- 10 pcs M24 mounting bolts
- Double speed working mode
- Hydraulic control valve with manual lever

SPECIFICATIONS

Maximum pulling capacity	40000 kg 88147,8 lbs
Maximum rope length	85 m 278 ft
Recommended wire rope	28 mm 10/9"
High torque hydraulic motor	100 cc 6,2 in ³
Maximum pump flow rate	75 l/min 19.81 gal/min
Max working pressure	210 bar 3045 psi
Winch	775 kg 1708 lbs

LINE PULL AND LINE SPEED PERFORMANCE

Winding layer	Pulling capacity (kg/lbs)	Rope speed (m/min - ft/min)	Rope length (m/ft)
1	40000 / 88184,8	3 / 9,8	17 / 55,7
2	34715 / 76533	3,7 / 12,1	37 / 121,4
3	30665 / 67604	4,4 / 14,4	60 / 196
4	27465 / 60549	5 / 16,4	85 / 278

APPLICATION AREAS



Heavy-duty tow trucks



Lowbed semi-trailers



Towing and recovery vehicles

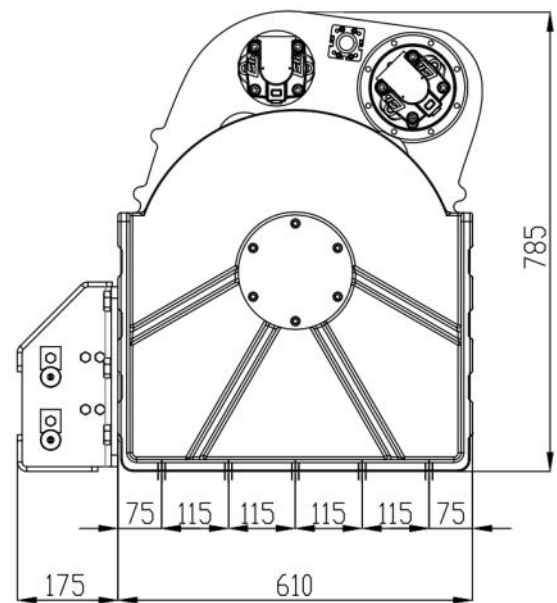
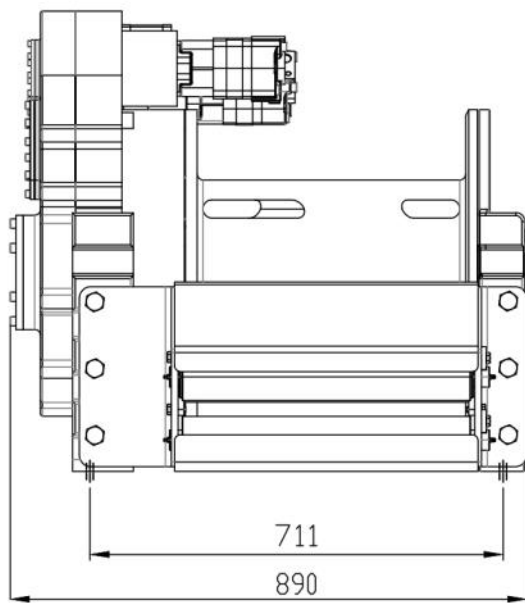


Trailers



Offroad trucks

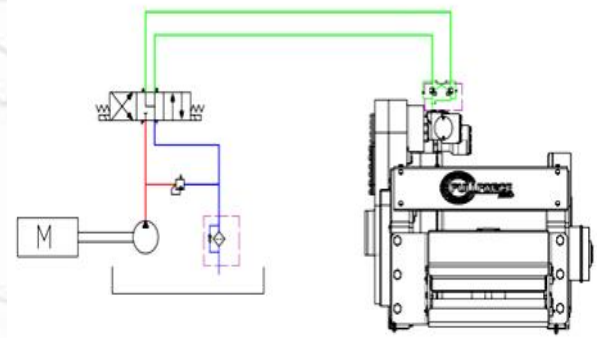
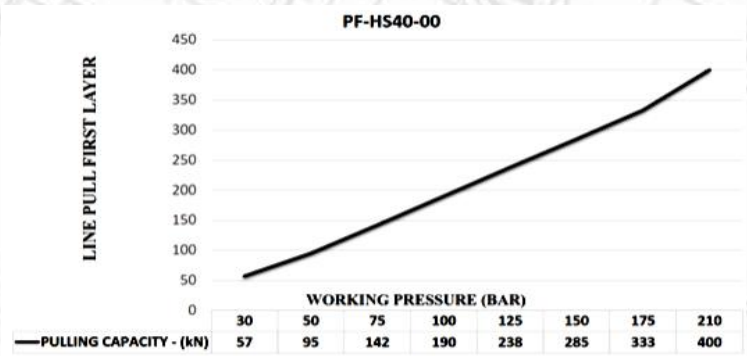
DIMENSIONS



HYDRAULIC PERFORMANCE

HYDRAULIC CURCUIT

Heavy series



FEATURES

- Gear Reduction:** 110 : 1
- Gear Type:** Single stage planetary with specially designed gear system
- Winch Construction:** Steel cast body reinforced with heat-treatment
- Braking:** Negative hydraulic disc brake system
- Drum Rotation:** Clockwise, or counter clockwise rotation as required
- Roller Guides:** Commercial type with large diameter rollers and grease ways
- Free spooling:** Standard pneumatic freespool

ATTENTION

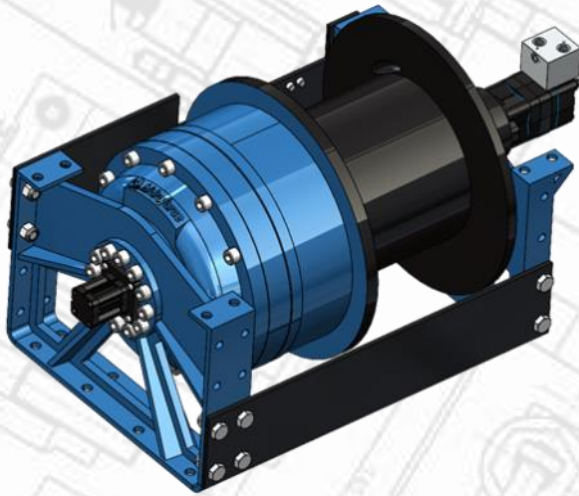
WARRANTY



These winches should not be used for lifting and there should be at least 5 wraps of wire rope on the drum. The data shown are for maximum pressure and maximum flow and should be used as a reference only.

Each new winch is guaranteed against defects in workmanship and material defects for a period of 24 months from date of purchase. Wire ropes are not included under warranty.

PF-HS 45-00



Towing and recovery winch for commercial and service vehicles. This model has a rigid planetary gear, disc brake system and steel cast body ready for challenging tasks. Different configurations are available upon request. Fully compliant with EN 14492 and SAE J706. Additional equipment and accessories are available as well.

ADDITIONAL EQUIPMENT

Standard package:

- Rope
- Roller fairlead
- Pressure roller
- Pneumatic freespool
- Hydraulic inlet G 1/2"

Optional:

- Radio control system
- ECU & IQAN equipment
- 12 pcs M24 mounting bolts
- Hydraulic control valve with manual lever

SPECIFICATIONS

Maximum pulling capacity	45000 kg 99208 lbs
Maximum rope length	57,7 m 190 ft
Recommended wire rope	30 mm 1 3/16"
High torque hydraulic motor	200 cc 12,2 in ³
Maximum pump flow rate	75 l/min 19,81 gal/min
Max working pressure	180 bar 2610 psi
Winch	598 kg 1318 lbs

LINE PULL AND LINE SPEED PERFORMANCE

Winding layer	Pulling capacity (kg/lbs)	Rope speed (m/min - ft/min)	Rope length (m/ft)
1	45000 / 99208	2,3 / 7,5	11,6 / 38
2	38720 / 85362	2,7 / 8,8	25,1 / 82,3
3	33975 / 74902	3,1 / 10,1	40,5 / 132,8
4	30270 / 66733	3,5 / 11,4	57,7 / 190

APPLICATION AREAS



Heavy-duty tow trucks



Lowbed semi-trailers



Towing and recovery vehicles

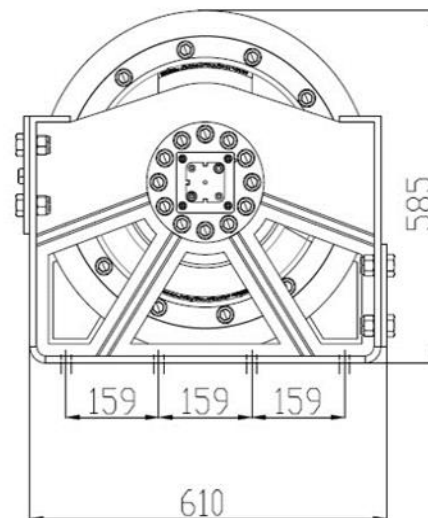
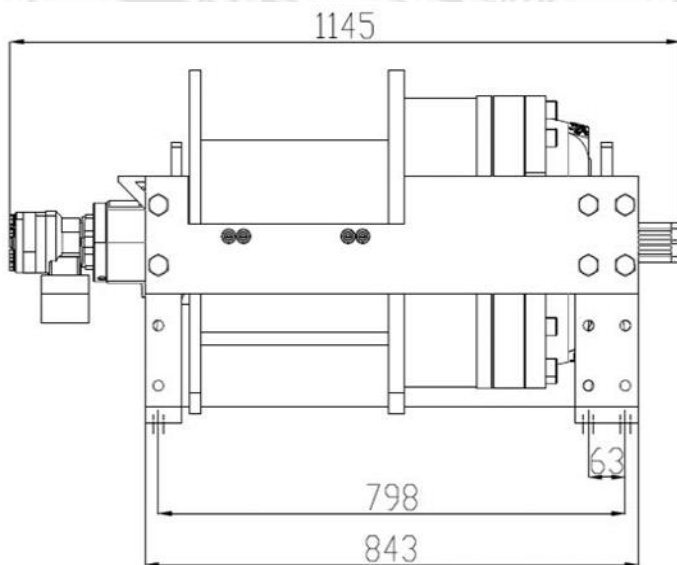


Trailers



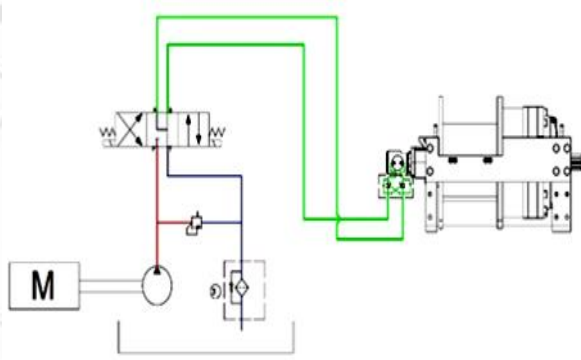
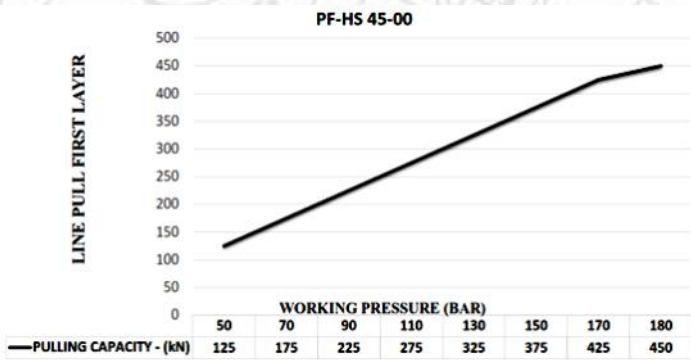
Offroad trucks

DIMENSIONS



HYDRAULIC PERFORMANCE

HYDRAULIC CURCUIT



Heavy series

FEATURES

- Gear Reduction:** 166.46 : 1
- Gear Type:** Three stage planetary
- Winch Construction:** Steel cast body reinforced with heat-treatment
- Braking:** Negative hydraulic disc brake system
- Drum Rotation:** Clockwise, or counter clockwise rotation as required
- Roller Guides:** Commercial type with large diameter rollers and grease ways
- Free spooling:** Standard pneumatic freespool

ATTENTION

WARRANTY

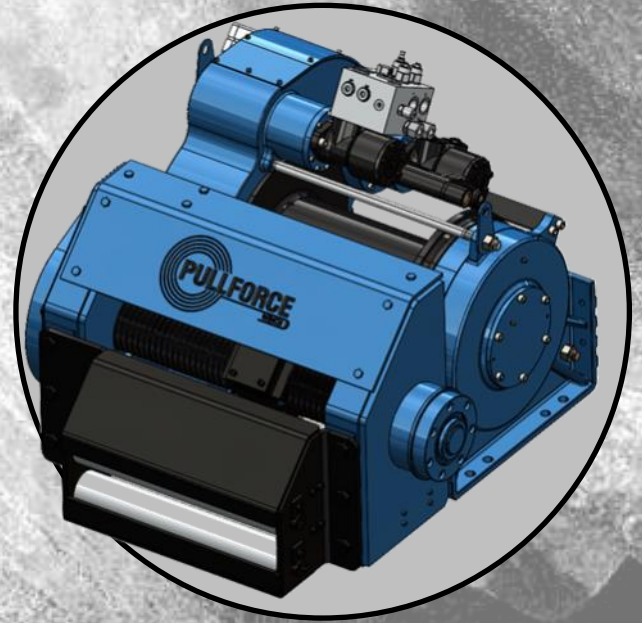


These winches should not be used for lifting and there should be at least 5 wraps of wire rope on the drum. The data shown are for maximum pressure and maximum flow and should be used as a reference only.

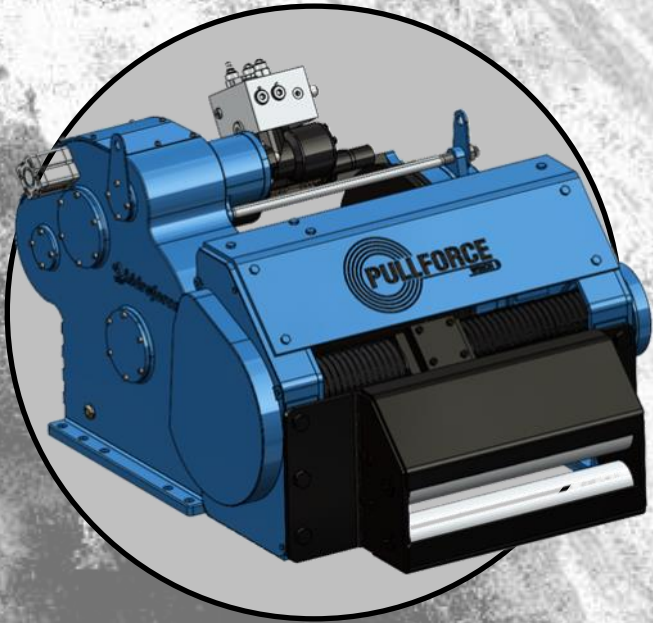
Each new winch is guaranteed against defects in workmanship and material defects for a period of 24 months from date of purchase. Wire ropes are not included under warranty.



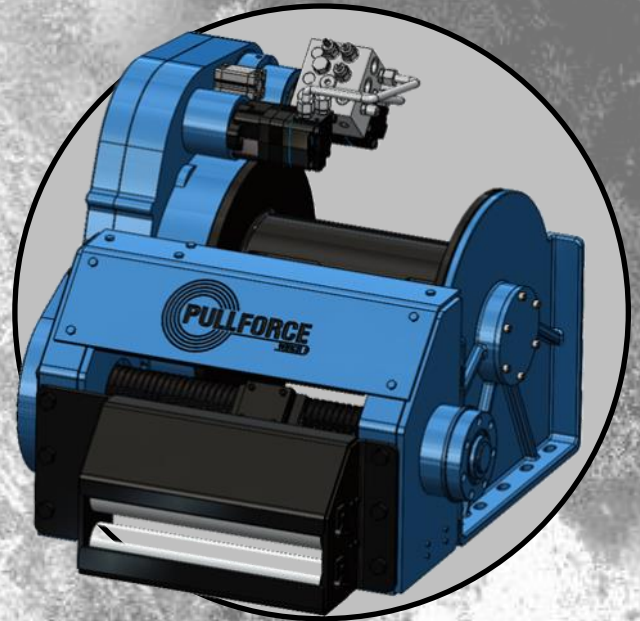
**SPECIAL SERIES
WINCHES**



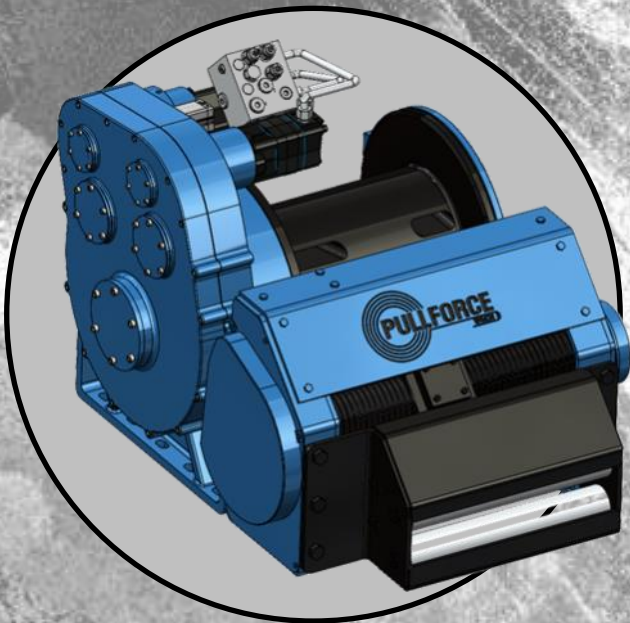
PF-SS 25-00



PF-SS 30-00

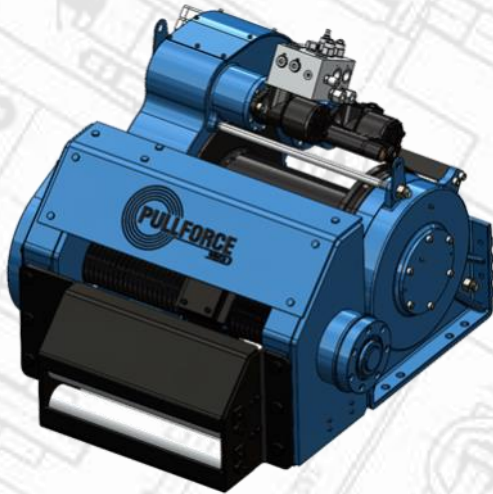


PF-SS 35-00



PF-SS 40-00

PF-SS 25-00



Double speed towing and recovery winch for commercial and service vehicles. This model has a rigid planetary gear, disc brake system, automatic roller fairlead and steel cast body ready for challenging tasks. Different configurations are available upon request. Fully compliant with EN 14492 and SAE J706. Additional equipment and accessories are available as well.

ADDITIONAL EQUIPMENT

Standard package:

- Rope
- Pressure roller
- Pneumatic freespool
- Hydraulic inlet G 1/2"
- Automatic roller fairlead
- Double speed working mode

Optional:

- Radio control system
- ECU & IQAN equipment
- 18 pcs M20 mounting bolts
- Hydraulic control valve with manual lever

SPECIFICATIONS

Maximum pulling capacity	25000 kg 55115 lbs
Maximum rope length	67 m 220 ft
Recommended wire rope	24 mm 15/16" in
High torque hydraulic motor	100 cc 6,10 in ³
Maximum pump flow rate	75 l/min 19,81 gal/min
Max working pressure	200 bar 2900 psi
Winch	465 kg 1025 lbs

LINE PULL AND LINE SPEED PERFORMANCE

Winding layer	Pulling capacity (kg/lbs)	Rope speed / High speed mode (m/min - ft/min)	Rope speed / Low speed mode (m/min - ft/min)	Rope length (m/ft)
1	25000 / 55115	8 / 26,2	4 / 13,1	13,25 / 43,5
2	21153 / 46636	9,5 / 31,1	4,7 / 15,4	28,9 / 94,8
3	18333 / 40418	11 / 36	5,5 / 18	46,9 / 153,8
4	16176 / 35663	12,5 / 41	6 / 19,7	67 / 220

APPLICATION AREAS



Heavy-duty tow trucks



Lowbed semi-trailers



Towing and recovery vehicles

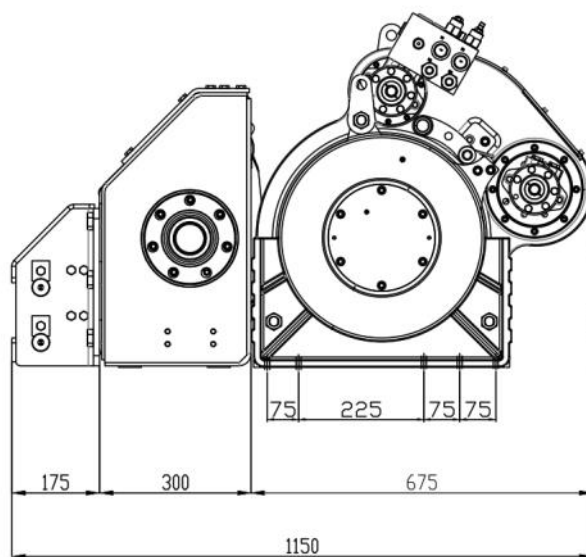
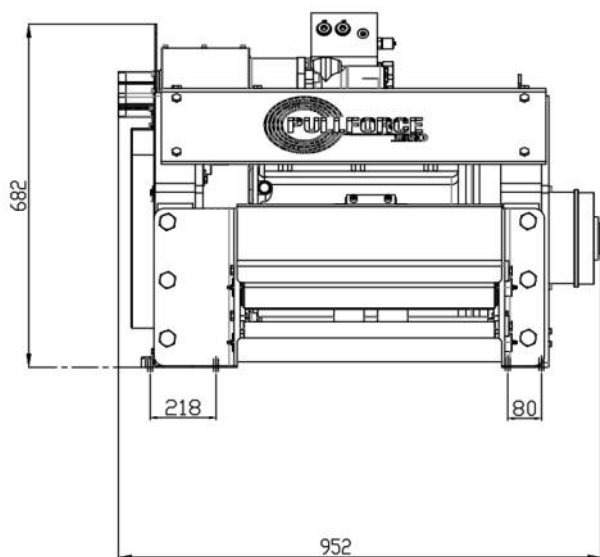


Trailers



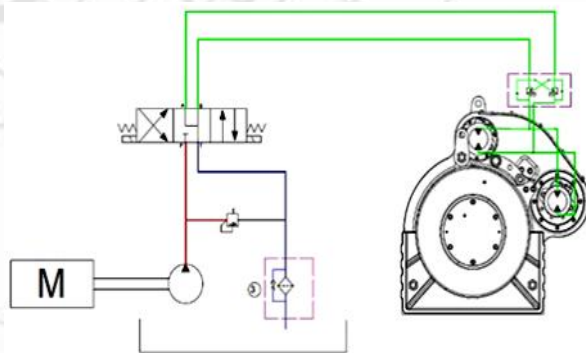
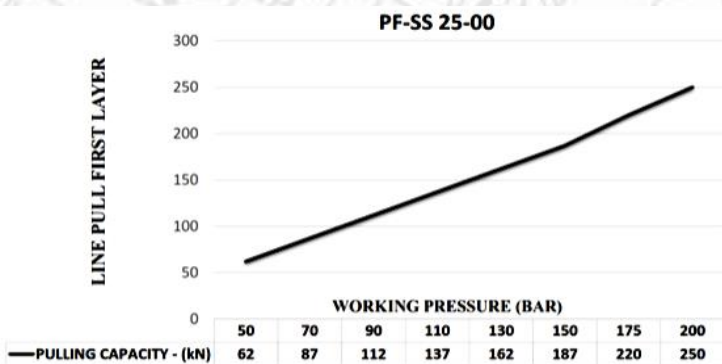
Offroad trucks

DIMENSIONS



HYDRAULIC PERFORMANCE

HYDRAULIC CURCUIT



FEATURES

- Gear Reduction:** 71.88 : 1
- Gear Type:** Single stage planetary with specially designed gear system
- Winch Construction:** Steel cast body reinforced with heat-treatment
- Braking:** Negative hydraulic disc brake system
- Drum Rotation:** Clockwise, or counter clockwise rotation as required
- Roller Guides:** Automatic with commercial type with large diameter rollers and grease ways
- Free spooling:** Standard pneumatic freespool

ATTENTION

WARRANTY

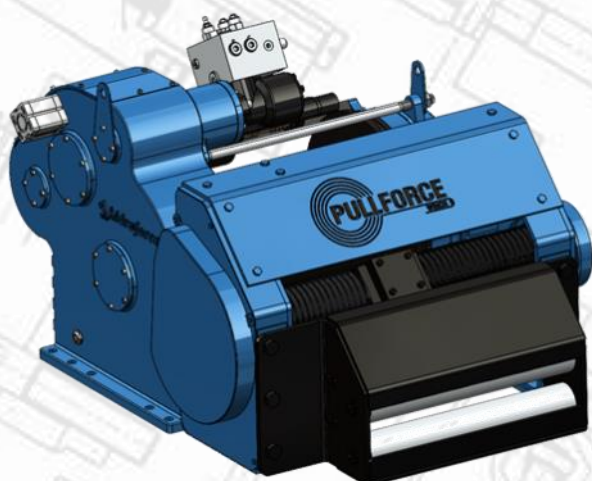


These winches should not be used for lifting and there should be at least 5 wraps of wire rope on the drum. The data shown are for maximum pressure and maximum flow and should be used as a reference only.

Each new winch is guaranteed against defects in workmanship and material defects for a period of 24 months from date of purchase. Wire ropes are not included under warranty.

Special series

PF-SS 30-00



Double speed towing and recovery winch for commercial and service vehicles. This model has a rigid planetary gear, disc brake system, automatic roller fairlead and steel cast body ready for challenging tasks. Different configurations are available upon request. Fully compliant with EN 14492 and SAE J706. Additional equipment and accessories are available as well.

ADDITIONAL EQUIPMENT

Standard package:

- Rope
- Pressure roller
- Pneumatic freespool
- Hydraulic inlet G 1/2"
- Automatic roller fairlead
- Double speed working mode

Optional:

- Radio control system
- ECU & IQAN equipment
- 18 pcs M20 mounting bolts
- Hydraulic control valve with manual lever

SPECIFICATIONS

Maximum pulling capacity	30000 kg 66138 lbs
Maximum rope length	67 m 220 ft
Recommended wire rope	24 mm 15/16" in
High torque hydraulic motor	130 cc 7,93 in ³
Maximum pump flow rate	75 l/min 19,81 gal/min
Max working pressure	200 bar 2900 psi
Winch	500 kg 1100 lbs

LINE PULL AND LINE SPEED PERFORMANCE

Winding layer	Pulling capacity (kg/lbs)	Rope speed / High speed mode (m/min - ft/min)	Rope speed / Low speed mode (m/min - ft/min)	Rope length (m/ft)
1	30000 / 66138	6 / 19,6	3 / 9,8	13,25 / 43,4
2	25384 / 55963	7,1 / 23,3	3,5 / 11,4	28,9 / 94,8
3	22000 / 48501	8,4 / 27,5	4,2 / 13,7	46,9 / 153
4	19411 / 42795	9,5 / 31	4,8 / 15,7	67 / 220

APPLICATION AREAS



Heavy-duty tow trucks



Lowbed semi-trailers



Towing and recovery vehicles

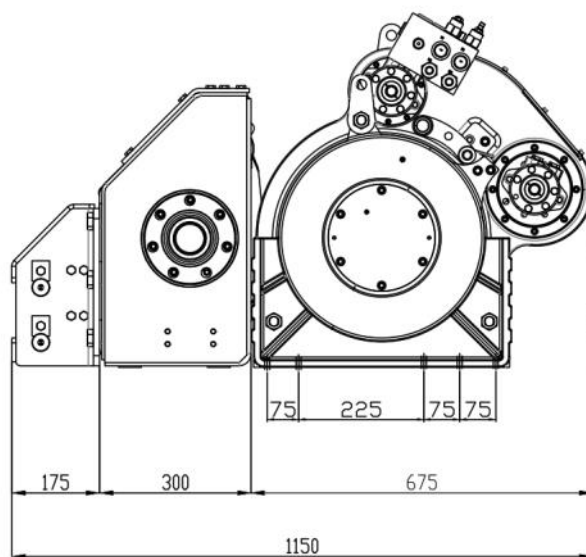
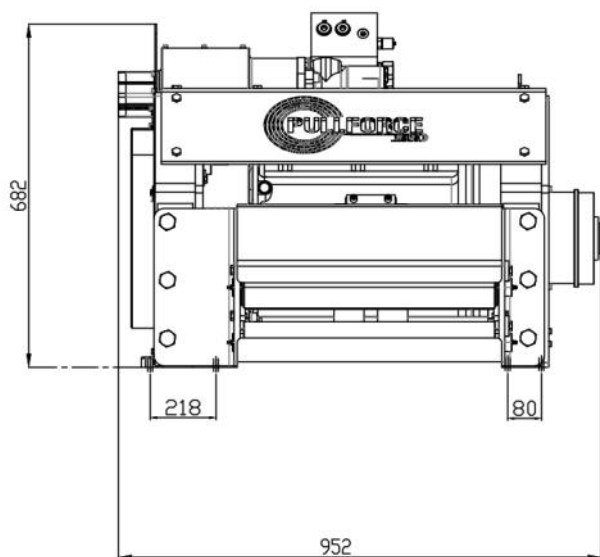


Trailers



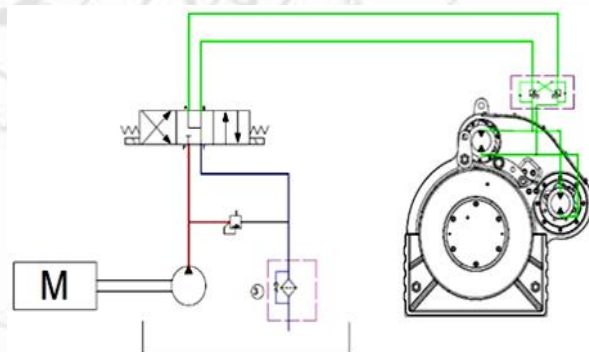
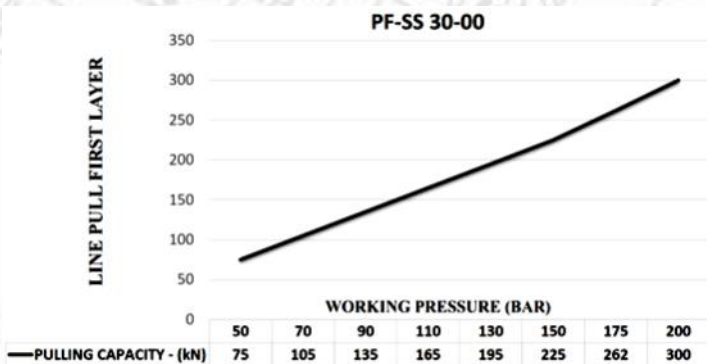
Offroad trucks

DIMENSIONS



HYDRAULIC PERFORMANCE

HYDRAULIC CURCUIT



FEATURES

- Gear Reduction:** 71.88 : 1
- Gear Type:** Single stage planetary with specially designed gear system
- Winch Construction:** Steel cast body reinforced with heat-treatment
- Braking:** Negative hydraulic disc brake system
- Drum Rotation:** Clockwise, or counter clockwise rotation as required
- Roller Guides:** Automatic with commercial type with large diameter rollers and grease ways
- Free spooling:** Standard pneumatic freespool

Special series

ATTENTION

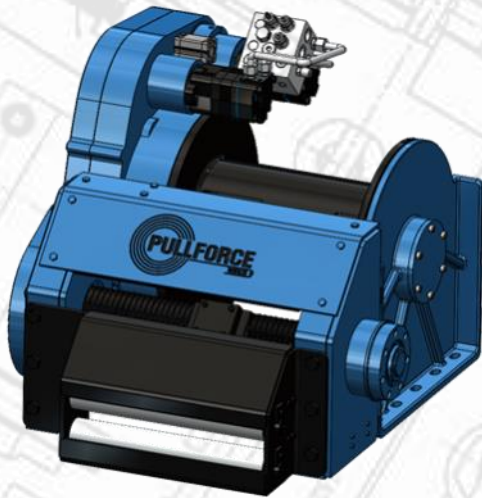
WARRANTY



These winches should not be used for lifting and there should be at least 5 wraps of wire rope on the drum. The data shown are for maximum pressure and maximum flow and should be used as a reference only.

Each new winch is guaranteed against defects in workmanship and material defects for a period of 24 months from date of purchase. Wire ropes are not included under warranty.

PF-SS 35-00



Double speed towing and recovery winch for commercial and service vehicles. This model has a rigid planetary gear, disc brake system, automatic roller fairlead and steel cast body ready for challenging tasks. Different configurations are available upon request. Fully compliant with EN 14492 and SAE J706. Additional equipment and accessories are available as well.

ADDITIONAL EQUIPMENT

Standard package:

- Rope
- Pressure roller
- Pneumatic freespool
- Hydraulic inlet G 1/2"
- Automatic roller fairlead
- Double speed working mode

Optional:

- Radio control system
- ECU & IQAN equipment
- 10 pcs M24 mounting bolts
- Hydraulic control valve with manual lever

SPECIFICATIONS

Maximum pulling capacity	35000 kg 77161 lbs
Maximum rope length	85 m 278,87
Recommended wire rope	28 mm 10/9"
High torque hydraulic motor	80 cc 4,88 in ³
Maximum pump flow rate	75 l/min 19,81 gal/min
Max working pressure	210 bar 3045 psi
Winch	775 kg 1708 lbs

LINE PULL AND LINE SPEED PERFORMANCE

Winding layer	Pulling capacity (kg/lbs)	Rope speed / High speed mode (m/min - ft/min)	Rope speed / Low speed mode (m/min - ft/min)	Rope length (m/ft)
1	35000 / 77161	9 / 29,5	4,3 / 14,1	17 / 55,7
2	30125 / 66414	10,5 / 34,4	5 / 16,4	37 / 121,3
3	26440 / 58290	12 / 39,3	5,8 / 19	60 / 197
4	23560 / 51940	13,5 / 44,2	6,5 / 21,3	85 / 278,8

APPLICATION AREAS



Heavy-duty tow trucks



Lowbed semi-trailers



Towing and recovery vehicles

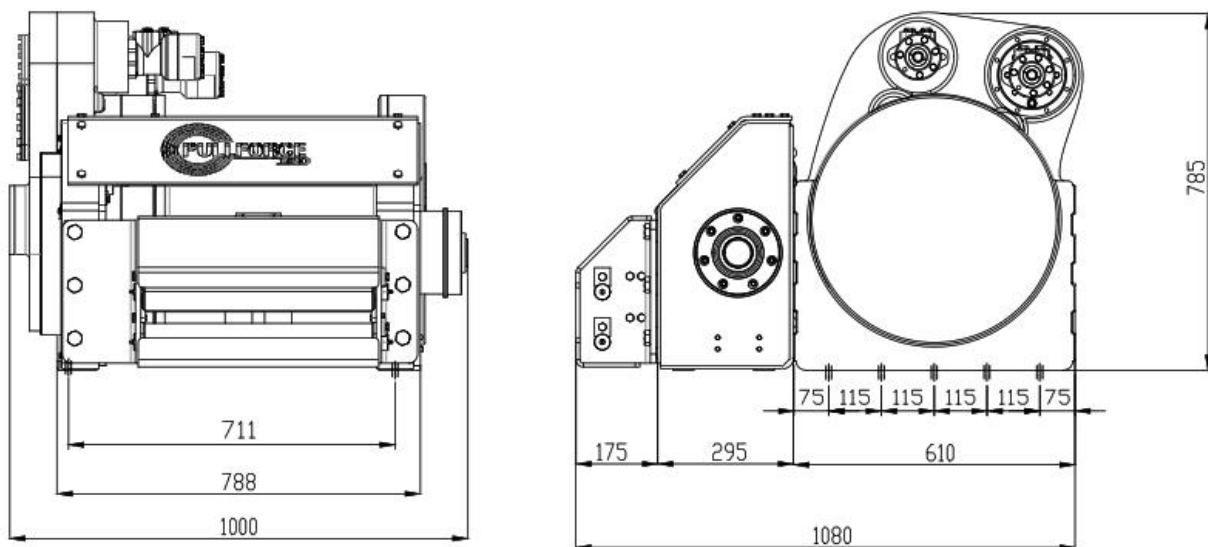


Trailers

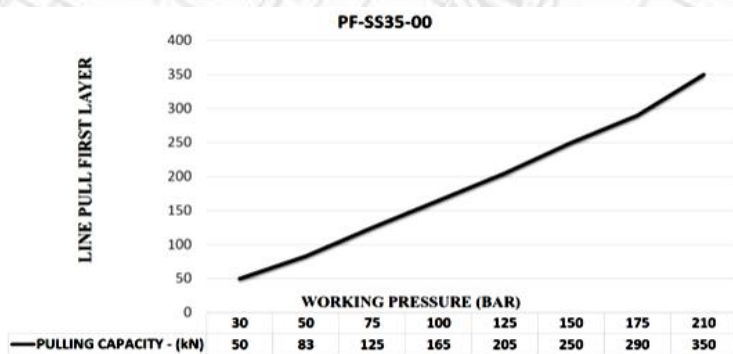


Offroad trucks

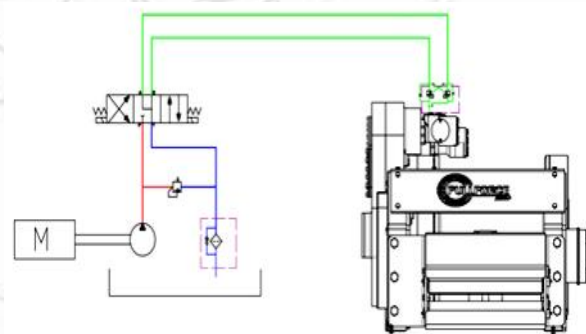
DIMENSIONS



HYDRAULIC PERFORMANCE



HYDRAULIC CURCUIT



FEATURES

- Gear Reduction:** 110 : 1
- Gear Type:** Single stage planetary with specially designed gear system
- Winch Construction:** Steel cast body reinforced with heat-treatment
- Braking:** Negative hydraulic disc brake system
- Drum Rotation:** Clockwise, or counter clockwise rotation as required
- Roller Guides:** Automatic with commercial type with large diameter rollers and grease ways
- Free spooling:** Standard pneumatic freespool

ATTENTION



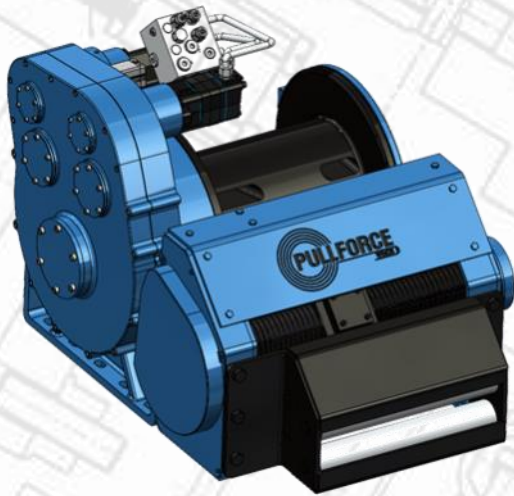
These winches should not be used for lifting and there should be at least 5 wraps of wire rope on the drum. The data shown are for maximum pressure and maximum flow and should be used as a reference only.

WARRANTY

Each new winch is guaranteed against defects in workmanship and material defects for a period of 24 months from date of purchase. Wire ropes are not included under warranty.

Special series

PF-SS 40-00



Double speed towing and recovery winch for commercial and service vehicles. This model has a rigid planetary gear, disc brake system, automatic roller fairlead and steel cast body ready for challenging tasks. Different configurations are available upon request. Fully compliant with EN 14492 and SAE J706. Additional equipment and accessories are available as well.

ADDITIONAL EQUIPMENT

Standard package:

- Rope
- Pressure roller
- Pneumatic freespool
- Hydraulic inlet G 1/2"
- Automatic roller fairlead
- Double speed working mode

Optional:

- Radio control system
- ECU & IQAN equipment
- 18 pcs M24 mounting bolts
- Hydraulic control valve with manual lever

SPECIFICATIONS

Maximum pulling capacity	40000 kg 88147,8 lbs
Maximum rope length	85 m 278 ft
Recommended wire rope	28 mm 10/9"
High torque hydraulic motor	100 cc 6,2 in ³
Maximum pump flow rate	75 l/min 19.81 gal/min
Max working pressure	210 bar 3045 psi
Winch	775 kg 1708 lbs

LINE PULL AND LINE SPEED PERFORMANCE

Winding layer	Pulling capacity (kg/lbs)	Rope speed / High speed mode (m/min - ft/min)	Rope speed / Low speed mode (m/min - ft/min)	Rope length (m/ft)
1	40000 / 88184,8	7 / 22,9	3 / 9,8	17 / 55,7
2	34425 / 75895	8,2 / 26,9	3,7 / 12,1	37 / 121,4
3	30218 / 66619	9,4 / 30,8	4,4 / 14,4	60 / 197
4	26925 / 59359	10,5 / 34,4	5 / 16,4	85 / 278

APPLICATION AREAS



Heavy-duty tow trucks



Lowbed semi-trailers



Towing and recovery vehicles

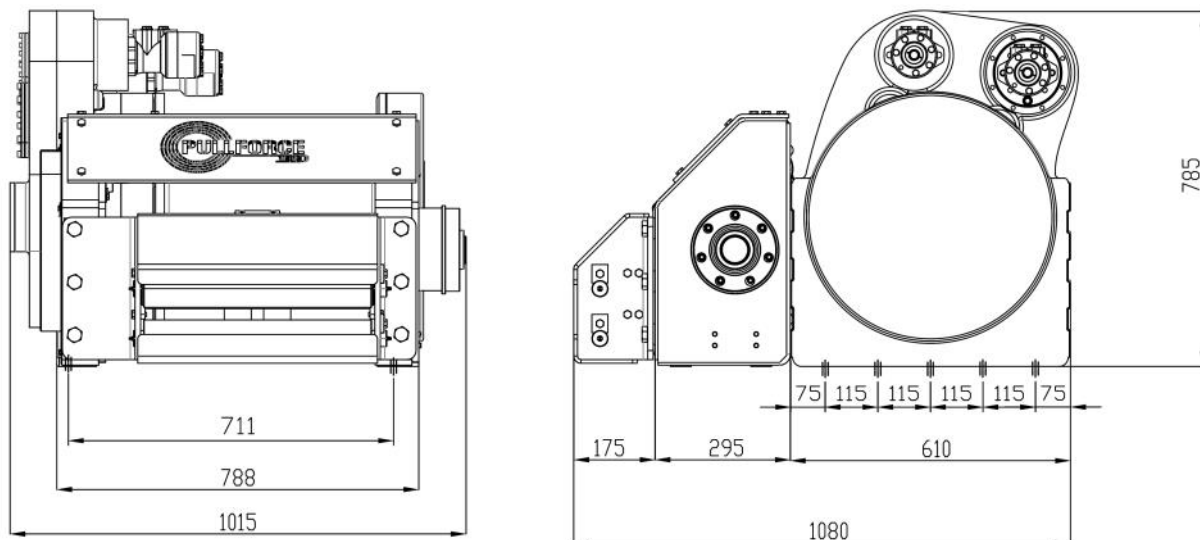


Trailers

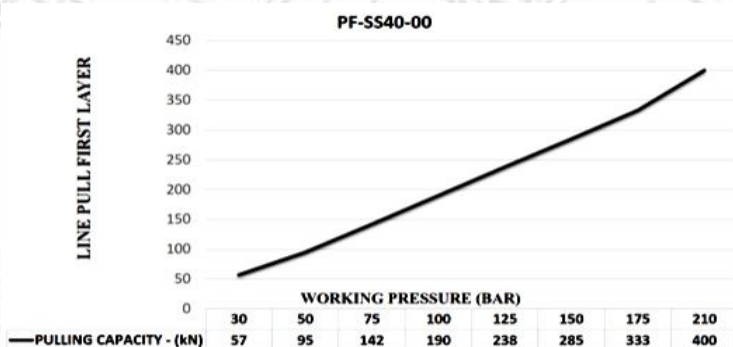


Offroad trucks

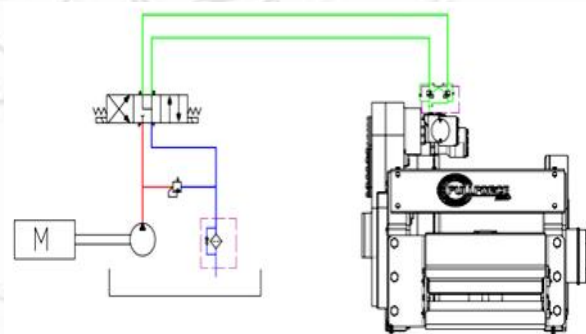
DIMENSIONS



HYDRAULIC PERFORMANCE



HYDRAULIC CURCUIT



FEATURES

- Gear Reduction:** 110 : 1
- Gear Type:** Single stage planetary with specially designed gear system
- Winch Construction:** Steel cast body reinforced with heat-treatment
- Braking:** Negative hydraulic disc brake system
- Drum Rotation:** Clockwise, or counter clockwise rotation as required
- Roller Guides:** Automatic with commercial type with large diameter rollers and grease ways
- Free spooling:** Standard pneumatic freespool

Special series

ATTENTION



These winches should not be used for lifting and there should be at least 5 wraps of wire rope on the drum. The data shown are for maximum pressure and maximum flow and should be used as a reference only.

WARRANTY

Each new winch is guaranteed against defects in workmanship and material defects for a period of 24 months from date of purchase. Wire ropes are not included under warranty.



MILITARY SERIES
WINCHES



PF-MLS 30-00-D



Recovery winch for military vehicles. Doubled performance allows to tow heavy military vehicles to a low-bed type trailer for maintenance, transportation and recovery purposes. Different configurations are available upon request. Fully compliant with EN 14492 and SAE J706. Additional equipment and accessories are available as well.

ADDITIONAL EQUIPMENT

Standard package:

- Roller fairlead
- Pressure roller
- Mounting holes
- Pneumatic freespool
- Hydraulic inlet G 1/2"

Optional:

- Pneumatic freespool
- Radio control system
- ECU & IQAN equipment
- Double speed working mode
- 10 pcs M24 x 2 mounting bolts
- Hydraulic control valve with manual lever

SPECIFICATIONS

Maximum pulling capacity	30000 kg x2 66138 lbs x2
Maximum rope length	67 m 220 ft
Recommended wire rope	24 mm 15/16" in
High torque hydraulic motor	130 cc 7,93 in ³
Maximum pump flow rate	75 l/min x2 19,81 gal/min x2
Max working pressure	200 bar 2900 psi
Winch	2200 kg 4850 lbs

LINE PULL AND LINE SPEED PERFORMANCE

Winding layer	Pulling capacity (kg/lbs)	Rope speed / High speed mode (m/min - ft/min)	Rope speed / Low speed mode (m/min - ft/min)	Rope length (m/ft)
1	(30000 / 66138) x2	6 / 19,7	3 / 9,84	13,25 / 43,4
2	(25384 / 55963) x2	7,1 / 23,3	3,5 / 11,5	28,9 / 94,8
3	(22000 / 48501) x2	8,4 / 27,5	4,2 / 13,7	46,9 / 153
4	(19411 / 42795) x2	9,5 / 31	4,8 / 15,7	67 / 220

APPLICATION AREAS



Winches



Tank transporter trailers



Tank transporter tractors

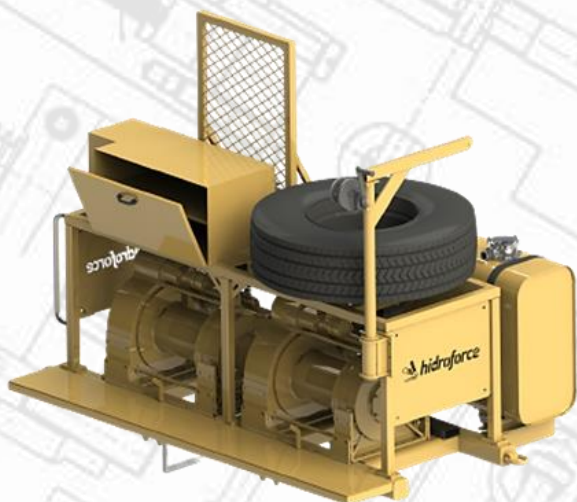


Towing and recovery vehicles



Trailers

PF-MLS 35-00-D



Recovery winch for military vehicles. Doubled performance allows to tow heavy military vehicles to a low-bed type trailer for maintenance, transportation and recovery purposes. Different configurations are available upon request. Fully compliant with EN 14492 and SAE J706. Additional equipment and accessories are available as well.

ADDITIONAL EQUIPMENT

Standard package:

- Roller fairlead
- Pressure roller
- Mounting holes
- Pneumatic freespool
- Hydraulic inlet G 1/2"

Optional:

- Pneumatic freespool
- Radio control system
- ECU & IQAN equipment
- Double speed working mode
- 18 pcs M20 x 2 mounting bolts
- Hydraulic control valve with manual lever

SPECIFICATIONS

Maximum pulling capacity	35000 kg x2 77161 lbs x2
Maximum rope length	85 m 278,9
Recommended wire rope	28 mm 10/9"
High torque hydraulic motor	80 cc 4,88 in ³
Maximum pump flow rate	75 l/min x2 19,81 gal/min x2
Max working pressure	210 bar 3045 psi
Winch	2460 kg 5423 lbs

LINE PULL AND LINE SPEED PERFORMANCE

Winding layer	Pulling capacity (kg/lbs)	Rope speed / High speed mode (m/min - ft/min)	Rope speed / Low speed mode (m/min - ft/min)	Rope length (m/ft)
1	(35000 / 77161) x2	9 / 29,5	4,3 / 14,1	17 / 55,7
2	(30125 / 66414) x2	10,5 / 34,4	5 / 16,4	37 / 121,4
3	(26440 / 58290) x2	12 / 39,3	5,8 / 19	60 / 197
4	(23560 / 51940) x2	13,5 / 44,3	6,5 / 21,3	85 / 278,9

APPLICATION AREAS



Winches



Tank transporter trailers



Tank transporter tractors

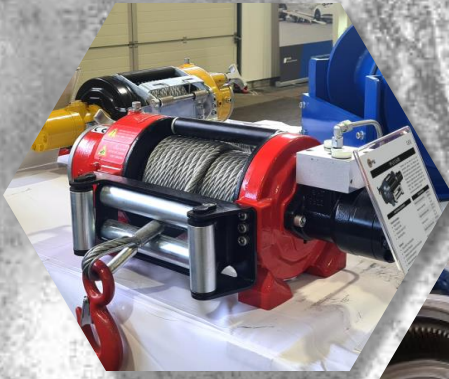


Towing and recovery vehicles



Trailers

Military series





CUSTOMER ORDER QUESTIONNAIRE

CUSTOMER INFORMATION

Company name

Company address

Company web address

CONTACT INFORMATION

Contact person

Email

Telephone

OPERATION CONDITIONS

Climatic conditions

Frequency of use

Terrain

TECHNICAL REQUIREMENTS

Length of a rope

Max weight

Hydraulic motor capacity

Max working pressure

Oil type

Rope diameter

BOYUT GEREKLİLİKLERİ

Max length

Max height

Max width

İLAVE EKİPMANLAR, AKSESUARLAR

Pressure rollers

Electronic equipment

Alignment rollers

Radio control

Automatic alignment rollers

ADDITIONAL COMMENTS



PULLFORCE

YOUR EXPERT PARTNER IN WINCH EQUIPMENT



PULLFORCE

WINCH

Saray Mahallesi, 688 Cad. No: 12,
Kahramankazan, Ankara, Türkiye

Tel: +90 312 394 4850
Mob: +90 538 543 5148

www.pullforcewinch.com
export@pullforcewinch.com

 **hidroforce**