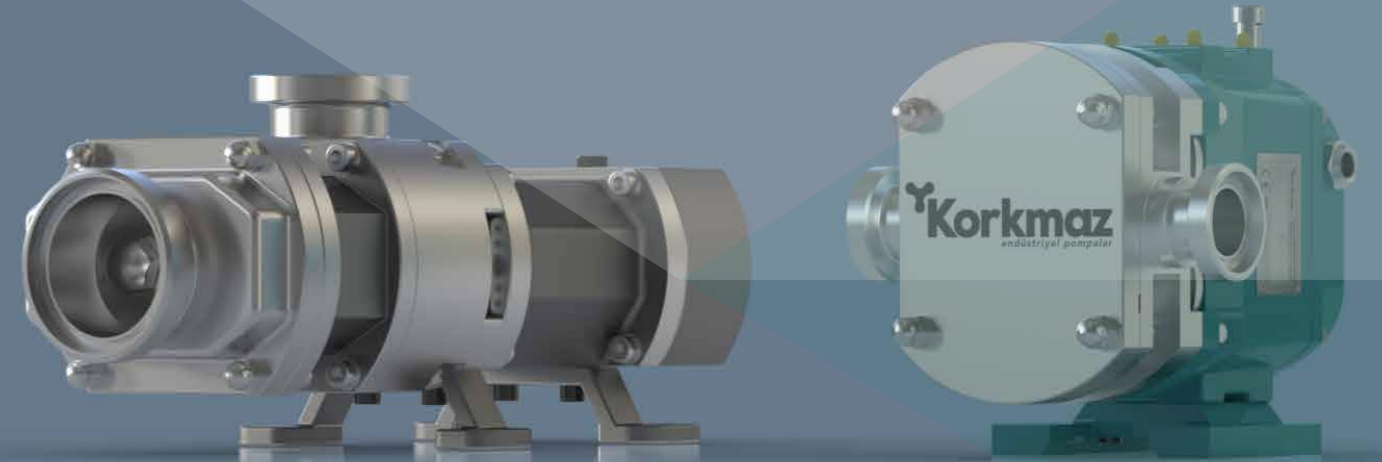




Korkmaz
endüstriyel pompalar

Korkmaz
endüstriyel pompalar



CONTACT US

P : +90 216 364 71 74

E : info@korkmazendustri.com.tr

W : www.korkmazendustri.com

Emek Mah. Atatürk Cad. No:4/1
İç kapı No:3 Sancaktepe, İstanbul, Türkiye

**ALWAYS
HIGH QUALITY**

KORKMAZ ENDÜSTRİ

Pump Machine MIEIT Limited Company

At Korkmaz Endüstri, we conduct our production activities in our modern facility, which covers an area of 850 square meters. Of this space, 700 square meters are dedicated to our assembly and processing operations, while the remaining 150 square meters house our office areas. Our production line is equipped with CNC milling and turning machines, along with other advanced workshop equipment, enabling us to perform our work with high precision. Additionally, our facility includes a painting room and welding area, allowing us to complete every stage of the production process in-house. Each pump we manufacture is meticulously tested in our specialized sealing and pressure test cabinets before being moved to the dispatch area. Here, they are prepared for safe and swift shipment to our global customers. Thanks to our extensive logistics network in the global market, our products reach all corners of the world, consistently delivering high performance under any conditions.



TABLE OF CONTENT

Biz Kimiz ?	04
Geçmişten Bugüne	06
Misyon & Vizyon	07
Our Assembly Area & Expertise	08
Our CNC Machinery Park	09
Spare Parts And Service	12
Our Warranty Process	13
Twin Screw Pump	14
Lobe Pump	16
True Pump Selection	18

ABOUT COMPANY ?

As the first company in the country to produce lobe pumps, we reflect our pioneering spirit in every product we manufacture.

Korkmaz Endüstri was founded in 1988 under the leadership of Yakup Korkmaz and has since established itself as a leader in industrial equipment manufacturing in Turkey. From our inception, we have committed to delivering high-quality products and being a reliable business partner. Over the years, we have expanded beyond national borders, establishing ourselves in global markets. We view regions such as North Africa, Central Africa, the Middle East, Turkic republics, Eastern Europe, and Russia as strategic sales territories. Additionally, we reach our customers across a broad geography, exporting to over 25 countries.

By producing value-added products and emphasizing innovation, we continue to differentiate ourselves in the industry. We closely follow technological advancements and enhance our global competitiveness with our innovative solutions. At Korkmaz Endüstri, our commitment to quality and our ability to respond quickly are key attributes that set us apart from our competitors.

As the first company in the country to produce lobe pumps, we reflect our pioneering spirit in every product we manufacture. Our sectoral focus includes critical areas such as dairy products, food, beverages, home and personal care products. In these sectors, we strengthen our presence by offering customized solutions that add value to our customers' business processes.



KORKMAZ FAMILY



Yakup KORKMAZ

At Korkmaz Endüstri, we draw strength from our past, look to the future with confidence, and continue on our path without compromising on quality.

In line with our vision of being a reliable, innovative, and value-creating organization wherever our products are used, we aim to reach a broader geography in global markets and solidify our leadership in the industry. Delivering high-quality service and trustworthy partnerships to our customers will always remain our top priority.

1988

Yakup Korkmaz at the Istanbul IMES Industrial Site with just three employees, Korkmaz Endüstri began its journey in the industrial world by manufacturing fuel pumps and engaging in various related fields.

1999

In its early years, our company was built on solid foundations, and with a determination to meet the growing needs of the food industry, we produced Turkey's first lobe pump in 1999. This step established Korkmaz Endüstri as a pioneering and trustworthy brand in the sector.

2007

We modernized our lobe pump design, and with this innovative step, we continued our journey without compromising on quality. By keeping up with technological advancements, we have continuously improved ourselves to best meet the industry's needs. Throughout this process, customer satisfaction has always been our top priority, and with our innovative solutions, we have strengthened our position in the industry.

2024

We reached another milestone by starting the production of twin screw pumps. This step marked a turning point, further solidifying Korkmaz Endüstri's leadership in the sector. Today, with a team of over 20 experts, we continue to advance with a steadfast commitment to quality. Every day, we work tirelessly to provide our customers with the best solutions.

COMPANY HISTORY

MISSION & VISION

OUR MISSION

As Korkmaz Industry, we aim to offer the best solutions to our customers by keeping quality, trust and innovation at the highest level in the industrial world. By quickly adapting to technological developments, we develop the most suitable and efficient products for the needs in the sector. We always consider customer satisfaction as our primary goal and act with this principle in every step we take. Our quality and trust-oriented approach forms the basis of the strong ties we have established with our business partners.

OUR VISION

As Korkmaz Endüstri, we aim to become a globally recognized and trusted leading brand with lobe, twin screw and other pump solutions that are still in the R&D process. With our commitment to quality, we will continue to offer innovative and sustainable solutions in the industrial world by pioneering innovations in the sector. In the future, we plan to be at the top of the global market as a leading brand that stands for quality, trust and sustainability. We are committed to achieving this goal with strong and decisive steps in line with the principles of continuous development and innovation.



Experience our industry leadership and innovative approach. Meet Korkmaz Endüstri and take your business to the next level.

OUR ASSEMBLY AREA & EXPERTISE

At Korkmaz Endüstri, we assemble each pump, consisting of 150-200 parts, with great care and precision. Each component is meticulously assembled, with all adjustments finely tuned. We also produce specialized pumps requiring custom craftsmanship to operate in unique processes.



These include mobile pumps, jacketed pumps, and other custom designs tailored to best meet our customers' needs. In our assembly area, we not only perform standard assembly procedures but also meticulously prepare each product to function under special conditions.

This approach allows us to provide tailored solutions for every project, catering to the diverse demands of different industries.

With over 35 years of experience and a team of experts, we approach every project with unique perspectives, delivering the most accurate solutions.

Each project is handled with detailed analysis and original approaches, ensuring that we produce high-quality and reliable pumps that meet our customers' needs.

At Korkmaz Endüstri, we prioritize quality and meticulousness at every step to ensure the highest level of customer satisfaction. Each of our products is shaped by years of experience and expertise, making them trusted choices worldwide.

OUR CNC MACHINES

In our CNC department, we machine cast stainless steel housings, lobe vanes, twin pump screws and other important parts with high precision. Working with an accuracy of one hundredth of a millimetre (0.01 mm), we ensure that each part is produced in the most accurate way.

In this department, all parts are machined with great care. We recognise that delivering a quality product is only possible with care at every stage. From lobe vanes to twin pump screws, every process requires high precision and attention. Therefore, we prioritise quality in all our machining processes.

Our CNC machines offer flexible solutions not only for standardised products but also for special requirements. In order to respond to the needs of our customers in the best way, we process each part with care and show all the sensitivity required to ensure full compliance with their processes.

With more than 35 years of experience, each part in our CNC department comes to life in the hands of our expert team. This experience and know-how enables us to offer our customers the highest quality and reliable products. Each of our products represents the preferred quality both locally and internationally.

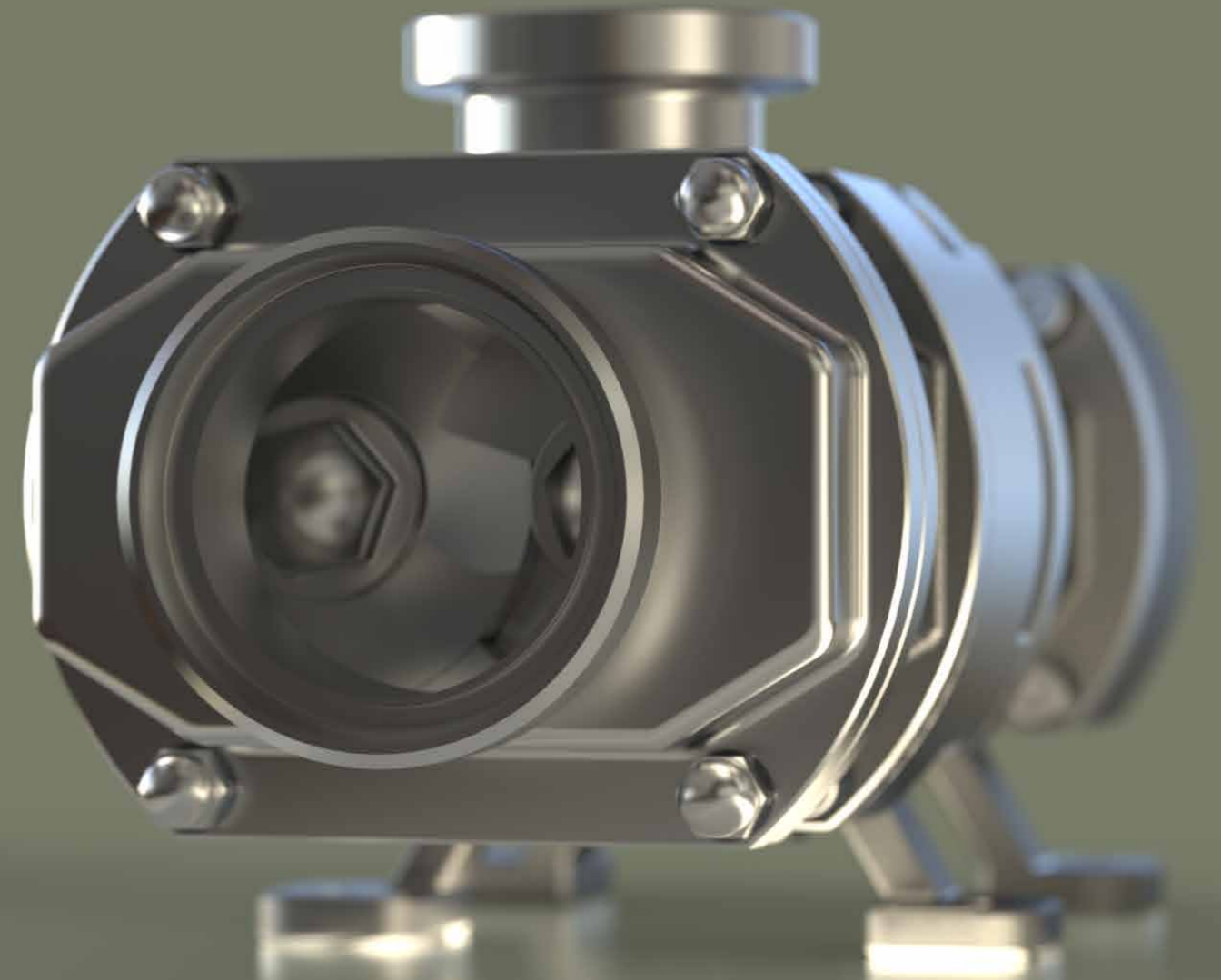
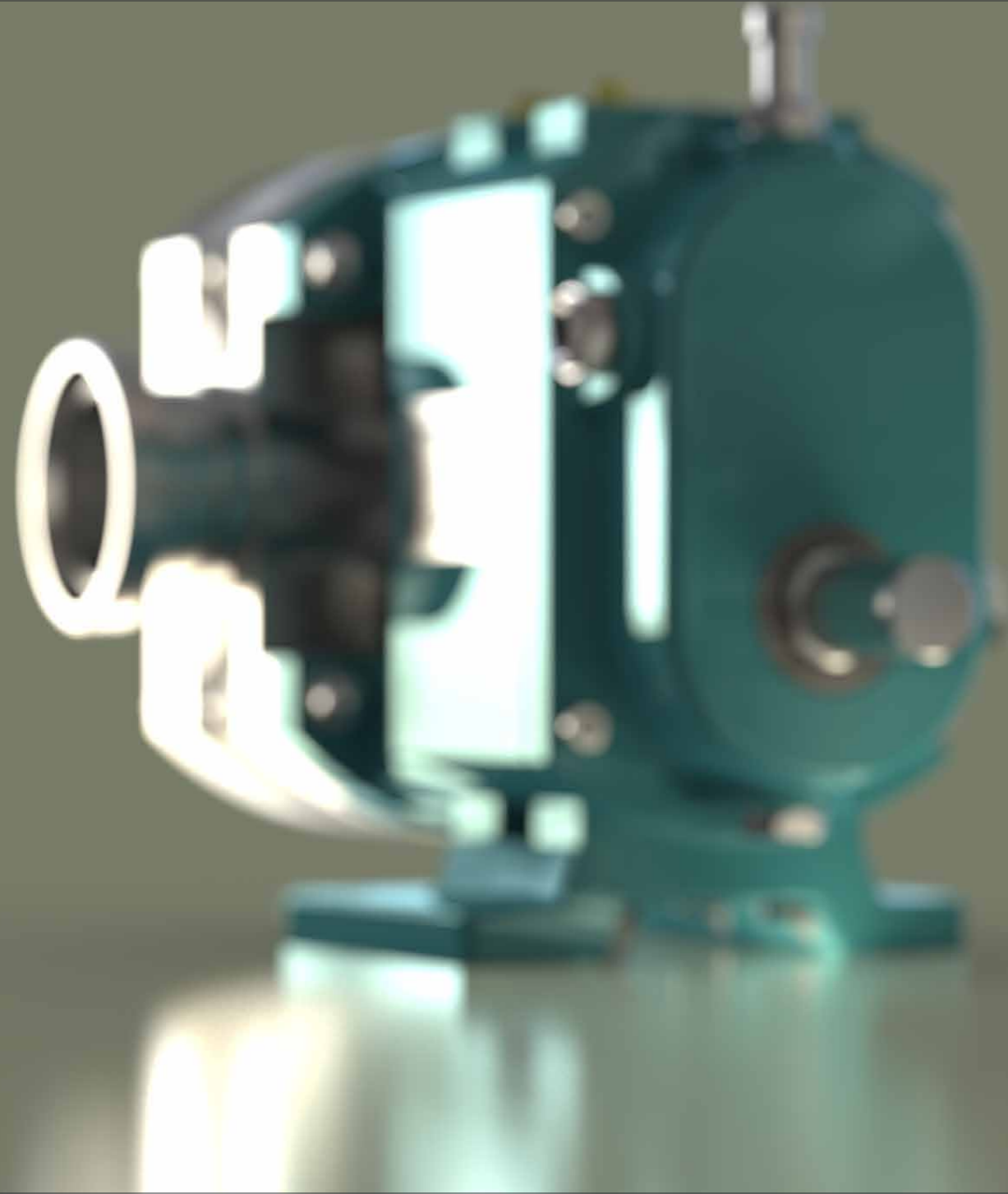
As Korkmaz Industry, we are constantly pursuing development and innovation by using the latest technologies in our CNC machining processes. Each part we produce is the result of the meticulousness and attention to detail in our work.

is an indicator.



STRENGTH OF THE PAST

Today, we are proud to be present in global markets. With the trust of our customers and business partners, we walk together to the future at every step. We continue to do our job in the best way possible with our commitment to quality.



As Korkmaz Industry, we have grown together with our business partners since 1988. Quality, labor and innovation have always been our priority. With the strength we draw from our past, we look to the future with confidence and secure today and tomorrow with every pump we produce.

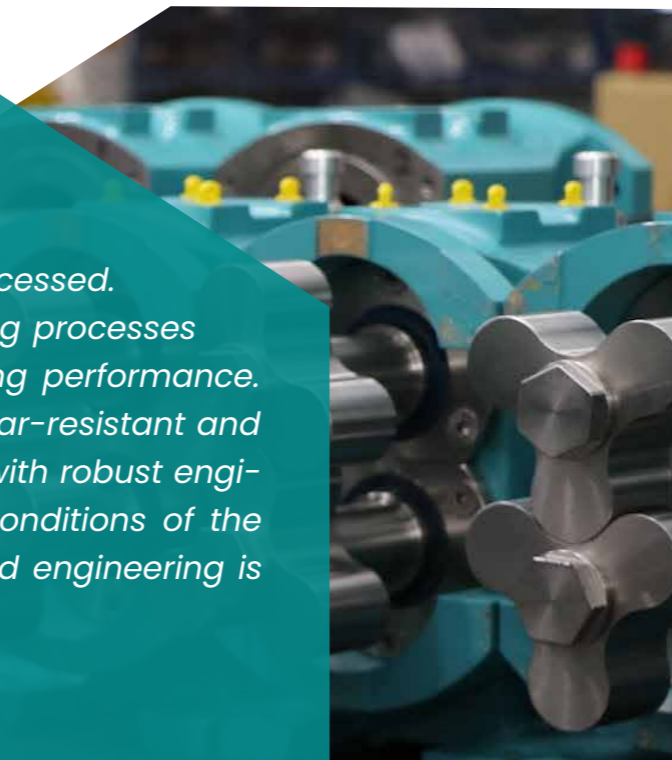
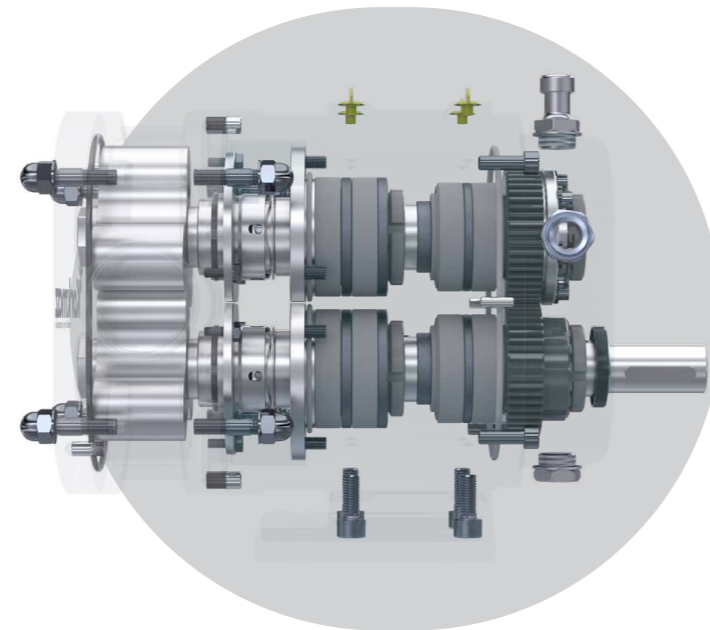
ASSURANCE OF THE FUTURE

SPARE PARTS & SERVICE

To maintain the optimal performance of our products, we provide original spare parts and reliable service. We swiftly supply the spare parts you need, and our expert team performs necessary maintenance and repairs on-site.

Our goal is to ensure that your operations continue uninterrupted and to be by your side in every situation. At Korkmaz Endüstri, we are always ready to support you.

As Korkmaz Industry, we prioritize customer satisfaction. Therefore, we not only provide high-quality spare parts but also ensure that these parts are used correctly and effectively. Our expert team, equipped with the latest technology, meticulously carries out all maintenance and repair operations.



Each part is carefully designed and processed. High-quality materials and precise manufacturing processes are combined to ensure reliable and long-lasting performance. The internal components are optimized to be wear-resistant and efficient. The simplicity of the design, combined with robust engineering, makes it suitable for the challenging conditions of the industry. The meticulousness in workmanship and engineering is reflected in every stage of the pump.

OUR WARRANTY PROCESS

01

Comprehensive Warranty Period

As Korkmaz Endüstri, we guarantee every lobe and twin screw pump we produce for 2 years. This warranty covers all kinds of defects and material-related problems that may occur during the production process. This warranty period, which reflects our belief in the quality of our products, aims to reinforce our customers' trust in our products. We are ready to be with you in all problems you may encounter during this period.

03

The Need for Consultation in the Event of Intervention

If you need to perform any intervention on your pump, it is important to consult us beforehand to ensure the continuity of the warranty and trouble-free operation of your products. This step plays a critical role in maintaining the correct operation of your products and preventing potential problems. As a manufacturer, we are happy to assist you in the best way possible with the right information and guidance.

02

Warranty Conditions

Our warranty is valid as long as the covers of your pumps remain sealed, no foreign matter (e.g. iron parts) enters inside and no user-induced interventions are made. These conditions are set to ensure efficient and long-lasting operation of our pumps. It is of great importance that you follow these rules in order to continue using your products with their first day performance.

04

User Caused Condition

Even for user-caused situations that are out of warranty, our technical team is always ready to be there for you and provide support as quickly as you need it. Even in cases that may occur due to user error or incorrect applications, we offer all the support needed to ensure that your business processes are not interrupted. Our goal is to provide you with reliable and fast solutions so that you can continue your business without interruption.

At Korkmaz Endüstri, our Twin Screw Pumps, developed to meet the most complex needs of industrial processes, represent the intersection of engineering excellence and advanced technology. With their twin screw design, they ensure the precise and continuous transfer of fluids with varying viscosities, thereby maximizing the efficiency of your operations.

These pumps are not only top-tier in fluid transfer but also set the standard for safety and durability. Manufactured with high-quality materials, Korkmaz Twin Screw Pumps exhibit superior resistance to abrasive and corrosive fluids, delivering long-lasting performance. Their minimal maintenance requirements and low operating costs make your business processes more efficient.

The components meticulously assembled for maximum performance and durability showcase how Korkmaz Twin Screw Pumps deliver superior performance under all challenging conditions. The robust structure and flawless operation reflect our commitment to the highest quality standards. Exceptional wear resistance is achieved in the pump's critical components, with tungsten used in the mechanical seals. The EPDM O-rings provide chemical resistance and flexibility, while the 316L stainless steel used on all surfaces in contact with the product guarantees the highest level of food safety and corrosion resistance. Each material is carefully selected to ensure long-lasting and reliable performance.

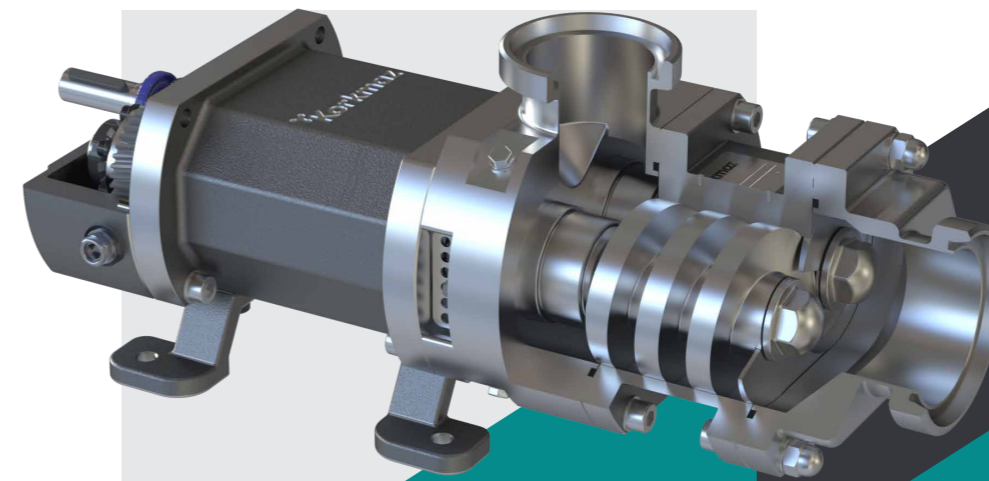
Twin screw pumps deliver high performance across a wide range of fluid viscosities, making them ideal for both thin and thick liquids. Their twin screw design ensures smooth and uninterrupted fluid transfer, which is critical for maintaining product quality.

The quiet operation and low vibration levels provide a peaceful and uninterrupted working experience in the production environment. With their energy-efficient design, they offer an environmentally friendly solution while also reducing your operating expenses.

Korkmaz Twin Screw Pumps are safely used in various industries, including dairy products, food, beverages, and home and personal care. They make a significant difference in these sectors with their high performance and reliability. Customizable to meet the needs of your business, these pumps offer the best solution for fluid transfer.

EVERY PART IS A MASTERPIECE

ADVANTAGES OF TWIN SCREW PUMPS



KTS-65

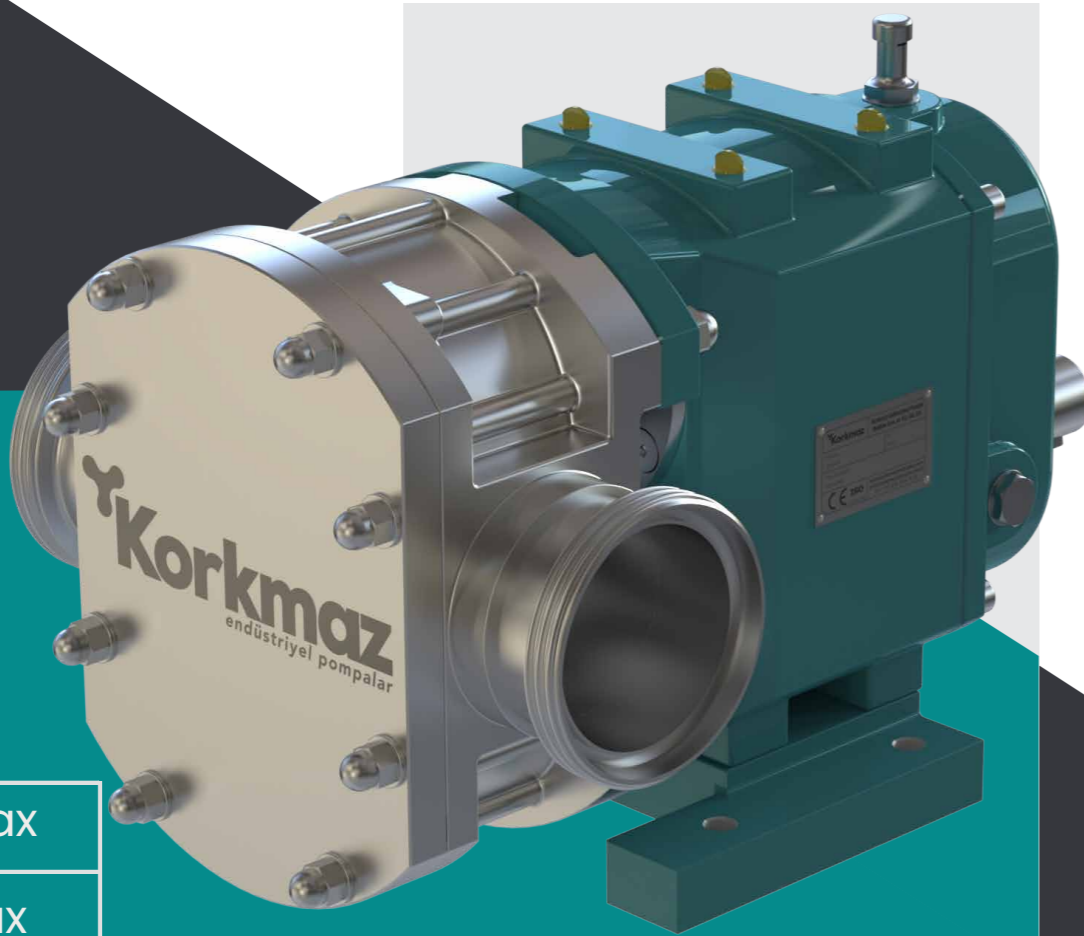
Pump	KTS65
Max pressure(bar)	16
Max capacity(m³/h)	20
Max viscosity(cP)	1.000.000
Temp. Range(°C)	0-150

These data represent the average performance obtained at a speed of 300 revolutions per minute in tests conducted with water on Twin Screw Pumps.

The test results are valid for low-viscosity liquids. As the viscosity of the product increases, pump performance and flow rates may vary. For the transfer of denser and more viscous products, it may be necessary to optimize the pump speed and pressure. Please contact our expert team to determine the most suitable pump settings based on the characteristics of your product.

At Korkmaz Endüstri, our Lobe Pumps, designed to offer perfect solutions for the most demanding industrial applications, represent a perfect harmony of precision and durability.

Thanks to their lobe structure, they transfer high-viscosity fluids and delicate liquids seamlessly, maximizing the efficiency and reliability of your processes.



KLP-100

20 Bar/Max

54 m³/Max

0-150°C

Bu veriler, Korkmaz Lobe Pompalarının su ile yapılan testlerinde, 300 devir/dakika hızında elde edilen ortalama performansı temsil etmektedir. Test sonuçları, düşük viskoziteli sıvılar için geçerlidir. Ürünün viskozitesi arttıkça, pompa performansı ve debi değerleri değişkenlik gösterebilir. Daha yoğun ve viskoz ürünlerin transferinde, pompa hızının ve basıncının optimize edilmesi gerekebilir. Kullandığınız ürünün özelliklerine bağlı olarak en uygun pompa ayarlarını belirlemek için lütfen uzman ekibimize iletişime geçin.

These pumps are not only leaders in fluid transfer but also excel in hygiene, safety, and durability.

Manufactured with high-quality materials, Korkmaz Lobe Pumps exhibit superior resistance to abrasive and corrosive liquids, providing long-lasting and uninterrupted performance. With their low maintenance requirements and minimal operating costs, they enhance your operational efficiency.

The quiet operation and low vibration levels ensure a peaceful and uninterrupted work experience in the production environment. Their energy-efficient design offers an environmentally friendly solution while also reducing your operating expenses.

Korkmaz Lobe Pumps are safely used in various sectors such as food, beverage, pharmaceuticals, and chemicals.

They make a difference in these industries with their high performance and hygiene standards. Customizable to meet the needs of your business, these pumps offer the most reliable solution for precise fluid transfer.

KORKMAZ LOBE PUMPS RELIABLE INDUSTRIAL SOLUTION

Korkmaz Lobe Pumps provide a long-lasting and reliable solution that operates with high precision in industrial processes.

These pumps deliver stable performance even under challenging conditions, ensuring smooth operation in your production line.

The high-quality materials used in their design offer superior resistance to abrasive substances.

Additionally, these pumps save your business time with their low maintenance requirements and minimize costs with energy efficiency.

Particularly in sectors where hygiene is paramount, Korkmaz Lobe Pumps maintain high standards and optimize your business processes.

With their wide range of applications and customizable design, they meet the diverse needs of your business.

TRUE PUMP SELECTION

Pressure

In pump systems, pressure refers to the force required to move the fluid. If you are working in a high-pressure system, you need to select a pump that can withstand the pressure and provide stable performance. In such systems, it is important to evaluate how the pump performs under pressure and its long-term reliability. If the pressure is low, a pump type that requires less power but still provides reliable flow should be chosen.

Flow Rate

Flow rate determines the amount of fluid that needs to be transported within a certain period in a system. If your system requires a high flow rate, you should select a pump that can handle this volume and ensure smooth continuous flow. In applications requiring medium or low flow rates, continuous and stable flow becomes a priority. Here, it is important to evaluate how the pump performs against flow rate fluctuations.

Viscosity

Viscosity refers to the resistance of a fluid to flow. High-viscosity fluids are generally more difficult to pump, and when selecting a pump for such fluids, the density and structure of the fluid should be considered. For low-viscosity fluids, it is important that the pump can manage the flow precisely and controllably. At this point, it is useful to test the pumps' resistance to viscosity.

PRESSURE, FLOW RATE, VISCOSITY SOLID PARTICLES & TEMPERATURE

Solid Particle Content

Solid particles in the fluid directly affect the performance of the pumps. The size, density, and nature of the particles can lead to different results depending on the pump's design. To transport solid particles without causing damage, minimize the risk of clogging, and maintain overall system safety, the correct pump type should be selected. Here, it is important to evaluate how the pump handles

Temperature

Temperature is another critical factor to consider in a pumping system. In systems operating at high temperatures, the material durability and performance stability of the pump are paramount. At low temperatures, the viscosity of the fluid may change, affecting pump performance. Pumps that offer durable and flexible solutions against temperature changes

Summary

The right pump selection is key to optimizing your system's performance. Factors such as pressure, flow rate, viscosity, solid particle content, and temperature are all elements that affect pump performance and long-term reliability. A conscious choice made by considering these elements will increase operational efficiency and minimize potential problems.

For more information on these topics and to select the most suitable pump type for your needs, please contact us. A good choice is the foundation of a smooth operation."



Pump selection plays a critical role in many industrial processes, and there are various factors to consider when making this choice. Parameters such as pressure, flow rate, viscosity, solid particle content, and temperature directly affect the system's performance. Different pump types respond to these conditions in different ways; therefore, making the right choice is vital for operational efficiency.

