

IFCESTR B 2000 N

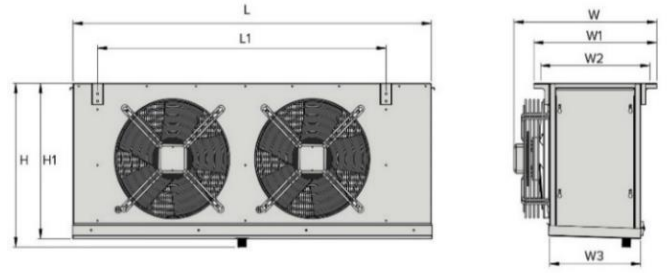
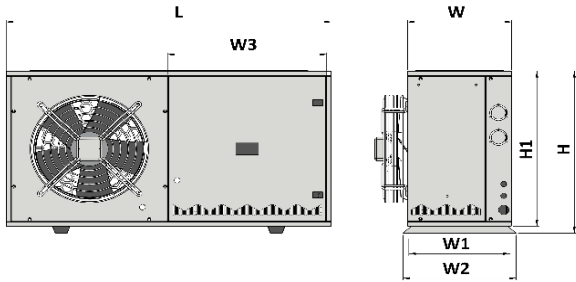


OUTER UNIT (CONDANSER) DIMENSIONS

L	L1	H	H1	W	W1	W2	W3
1250	0	689	659	400	420	435	611

INNER UNIT (EVAPORATOR) DIMENSION

L	L1	H	H1	W	W1	W2	W3
1100	825	505	455	500	440	385	325



OUTER UNIT (CONDANSER)

kg = -----

kg = -----

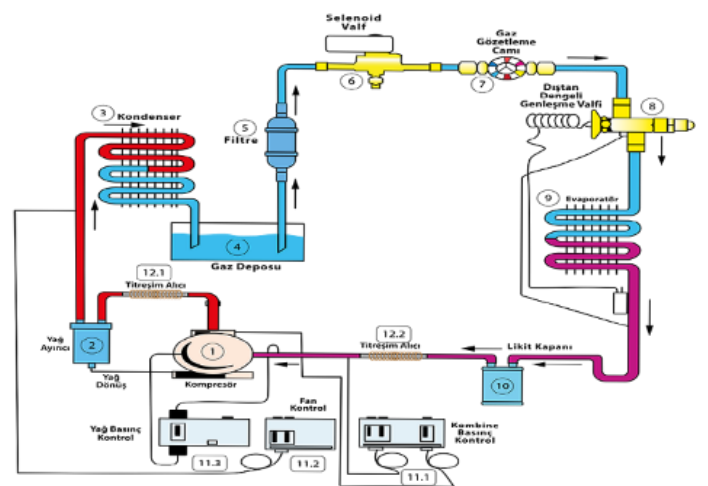
INNER UNIT'S DRAINAGE Ø = 33 mm

TECHNICAL FEATURES

OUTER UNIT (CONDANSER)		COMPRESSOR		INNER UNIT (EVAPORATOR)	
MODEL CODE	SNOWBOX 3-1.5 HP	BRAND	BİTZER	MODEL CODE	TEA30 124 8
QUANTITY	1	MODEL	2EES-2Y	QUANTITY	1
FAN QUANTITY	1	POWER	2 HP	FAN QUANTITY	2
FAN DIA. Ø (mm)	450	TYPE	YARI HERMETİK	FAN DIA. Ø (mm)	300
CAPACITY (KW)	8,8	NOMINAL CURRENT (A.)		CAPACITY (KW)	2,52
SURFACE (m²)	19,9	DISCHARGE-SUCTION CONN.	3/8-7/8	SURFACE (m²)	11,46

LINE EQUIPMENTS	ECO	PLS
RECEIVER (GUVEN)	✓	✓
OIL SEPARATOR (GUVEN)	✓	✓
LIQUID ACCUMULATOR (GUVEN)	✓	✓
CAPILARY TUBES & MANOMETERS (T-COLD)	x	✓
LP/HP SWITCH (REFNOX)	✓	x
HP & COMBINE PRESSOSTAD (DANFOSS)	x	✓
SIGHTGLASSES (DANFOSS)	✓	✓
SELENOID VALVE (DANFOSS)	x	✓
DRAIR (DANFOSS / T-COLD)	✓	✓
ABSORBER (COLDTHERM)	✓	✓
DIGITAL CONTROLLER (DANFOSS / AKO / ELIWE)	✓	✓
ELECTRICAL EQUIPMENTS (SCHNEIDER)	✓	✓
FANS (ZEIHL-ABAGG, ROSENBERG, EBM)	x	✓

DIAGRAM OF EQUIPMENTS HAS BEEN PRESENTED VISUALLY.



CONDITIONS OF COMPRESSOR CAPACITY

TO / TC (°C)	-18/+40	-18/+45	-18/+50	-25/+40	-25/+45	-25/+50	-31/+40	-31/+45	-31/+50
COOLING CAPACITY (kW)	4,46	4,00	3,52	3,18	2,82	2,45	2,28	1,99	1,70
POWER CUMSUPTION (kW)	2,10	2,16	2,20	1,77	1,79	1,80	1,48	1,47	1,45
COP (w/w)	2,13	1,85	1,60	1,80	1,57	1,36	1,54	1,35	1,17

IFCESTR B 3000 N

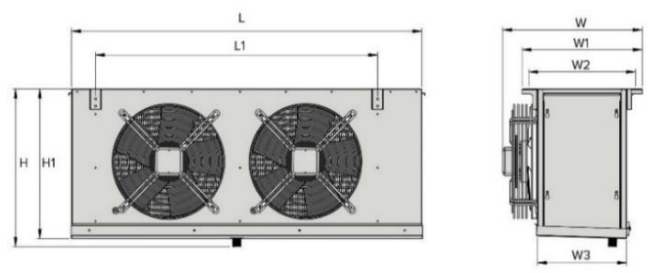
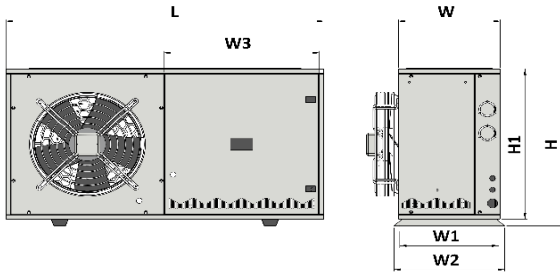


OUTER UNIT (CONDANSER) DIMENSIONS

L	L1	H	H1	W	W1	W2	W3
1350	0	686	658	500	521	535	711

INNER UNIT (EVAPORATOR) DIMENSION

L	L1	H	H1	W	W1	W2	W3
1300	1025	565	535	500	440	385	325



OUTER UNIT (CONDANSER)

kg = ----

kg = ----

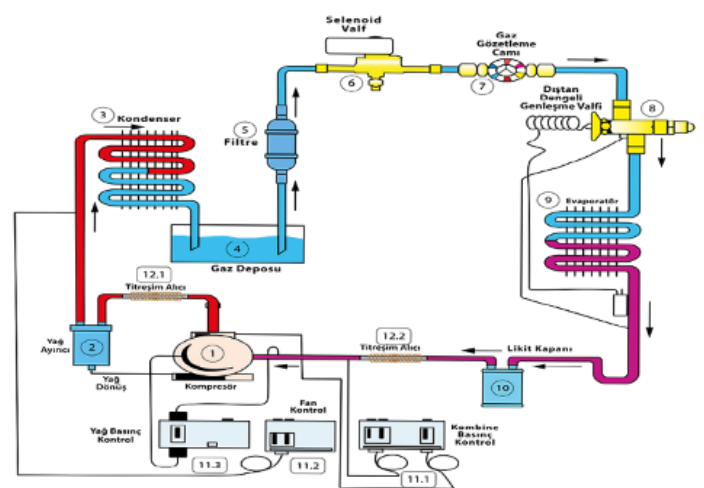
INNER UNIT'S DRAINAGE Ø = 33 mm

TECHNICAL FEATURES

OUTER UNIT (CONDANSER)		COMPRESSOR		INNER UNIT (EVAPORATOR)	
MODEL CODE	SNOW BOX 300 MAXİ	BRAND	BİTZER	MODEL CODE	TEA40 124 8
QUANTITY	1	MODEL	2CES-3Y	QUANTITY	1
FAN QUANTITY	1	POWER	3 HP	FAN QUANTITY	2
FAN DIA. Ø (mm)	450	TYPE	YARI HERMETİK	FAN DIA. Ø (mm)	400
CAPACITY (KW)	12	NOMINAL CURRENT (A.)		CAPACITY (KW)	4,32
SURFACE (m²)	35	DISCHARGE-SUCTION CONN.	3/8-7/8	SURFACE (m²)	17,19

LINE EQUIPMENTS	ECO	PLS
RECEIVER (GUVEN)	✓	✓
OIL SEPARATOR (GUVEN)	✓	✓
LIQUID ACCUMULATOR (GUVEN)	✓	✓
CAPILARY TUBES & MANOMETERS (T-COLD)	x	✓
LP/HP SWITCH (REFNOX)	✓	x
HP & COMBINE PRESSOSTAD (DANFOSS)	x	✓
SIGHTGLASSES (DANFOSS)	✓	✓
SELENOID VALVE (DANFOSS)	x	✓
DRAIR (DANFOSS / T-COLD)	✓	✓
ABSORBER (COLDTHERM)	✓	✓
DIGITAL CONTROLLER (DANFOSS / AKO / ELIWE)	✓	✓
ELECTRICAL EQUIPMENTS (SCHNEIDER)	✓	✓
FANS (ZEIHL-ABAGG, ROSENBERG, EBM)	x	✓

DIAGRAM OF EQUIPMENTS HAS BEEN PRESENTED VISUALLY.



CONDITIONS OF COMPRESSOR CAPACITY

TO / TC (°C)	-18/+40	-18/+45	-18/+50	-25/+40	-25/+45	-25/+50	-31/+40	-31/+45	-31/+50
COOLING CAPACITY (kW)	6,68	6,02	5,35	4,83	4,33	3,81	3,53	3,13	2,72
POWER CUMSUPTION (kW)	3,16	3,28	3,38	2,70	2,76	2,81	2,29	2,32	2,33
COP (w/w)	2,11	1,84	1,58	1,79	1,56	1,36	1,54	1,35	1,17

IFCESTR B 4000 N

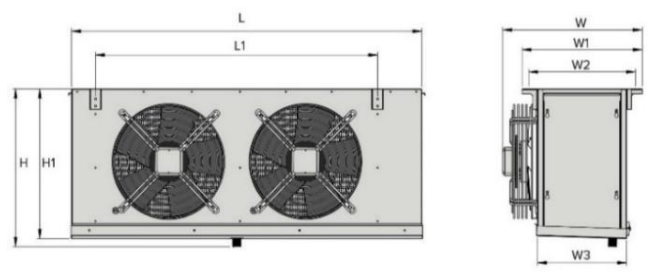
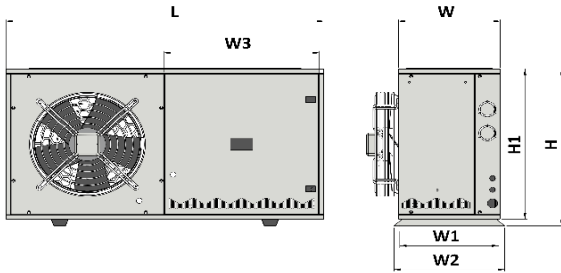


OUTER UNIT (CONDANSER) DIMENSIONS

L	L1	H	H1	W	W1	W2	W3
1350	0	686	658	500	521	535	711

INNER UNIT (EVAPORATOR) DIMENSION

L	L1	H	H1	W	W1	W2	W3
565	1300	590	535	1025	520	475	405



OUTER UNIT (CONDANSER)

kg = ----

kg = ----

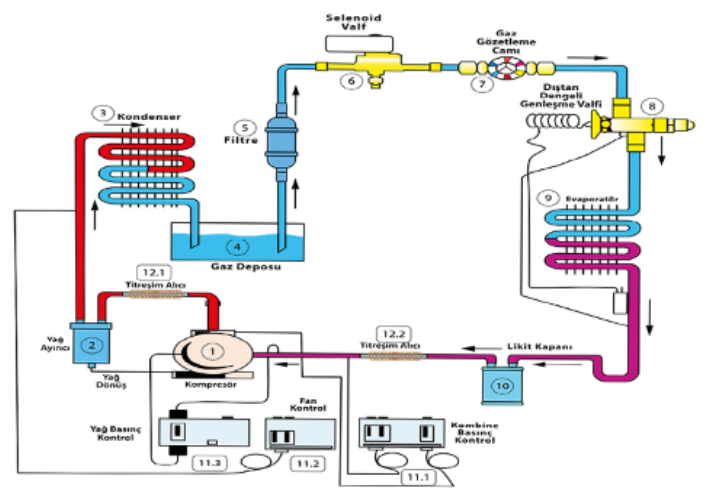
INNER UNIT'S DRAINAGE Ø = 33 mm

TECHNICAL FEATURES

OUTER UNIT (CONDANSER)		COMPRESSOR		INNER UNIT (EVAPORATOR)	
MODEL CODE	SNOW BOX 400 MİDİ	BRAND	BİTZER	MODEL CODE	TEA40 125 8
QUANTITY	1	MODEL	4EES-4Y	QUANTITY	1
FAN QUANTITY	1	POWER	4 HP	FAN QUANTITY	2
FAN DIA. Ø (mm)	500	TYPE	YARI HERMETİK	FAN DIA. Ø (mm)	400
CAPACITY (KW)	17,5	NOMINAL CURRENT (A.)		CAPACITY (KW)	5,33
SURFACE (m²)	43	DISCHARGE-SUCTION CONN.	1/2- 1 1/8	SURFACE (m²)	21,33

LINE EQUIPMENTS	ECO	PLS
RECEIVER (GUVEN)	✓	✓
OIL SEPARATOR (GUVEN)	✓	✓
LIQUID ACCUMULATOR (GUVEN)	✓	✓
CAPILARY TUBES & MANOMETERS (T-COLD)	x	✓
LP/HP SWITCH (REFNOX)	✓	x
HP & COMBINE PRESSOSTAD (DANFOSS)	x	✓
SIGHTGLASSES (DANFOSS)	✓	✓
SELENOID VALVE (DANFOSS)	x	✓
DRAIR (DANFOSS / T-COLD)	✓	✓
ABSORBER (COLDTHERM)	✓	✓
DIGITAL CONTROLLER (DANFOSS / AKO / ELIWE)	✓	✓
ELECTRICAL EQUIPMENTS (SCHNEIDER)	✓	✓
FANS (ZEIHL-ABAGG, ROSENBERG, EBM)	x	✓

DIAGRAM OF EQUIPMENTS HAS BEEN PRESENTED VISUALLY.



CONDITIONS OF COMPRESSOR CAPACITY

TO / TC (°C)	-18/+40	-18/+45	-18/+50	-25/+40	-25/+45	-25/+50	-31/+40	-31/+45	-31/+50
COOLING CAPACITY (kW)	9,06	8,20	7,34	6,52	5,89	5,24	4,79	4,30	3,80
POWER CUMSUPTION (kW)	4,39	4,57	4,72	3,73	3,84	3,92	3,16	3,21	3,24
COP (w/w)	2,07	1,80	1,56	1,75	1,53	1,34	1,52	1,34	1,17

IFCESTR B 5000 N

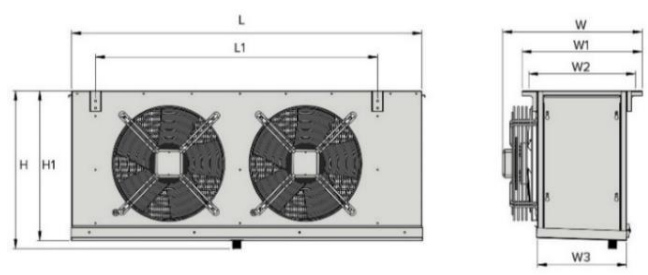
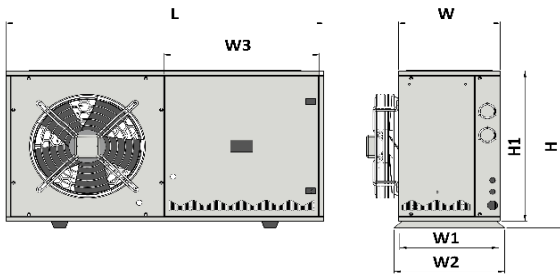


OUTER UNIT (CONDANSER) DIMENSIONS

L	L1	H	H1	W	W1	W2	W3
1350	0	686	658	500	521	535	711

INNER UNIT (EVAPORATOR) DIMENSION

L	L1	H	H1	W	W1	W2	W3
1585	1325	730	720	520	440	385	325



OUTER UNIT (CONDANSER)

kg = ----

kg = ----

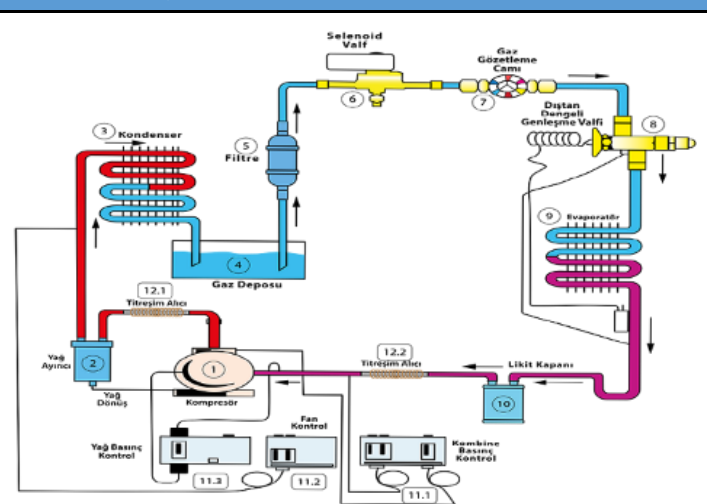
INNER UNIT'S DRAINAGE Ø = 33 mm

TECHNICAL FEATURES

OUTER UNIT (CONDANSER)		COMPRESSOR		INNER UNIT (EVAPORATOR)	
MODEL CODE	SNOW BOX 400 Midi	BRAND	BİTZER	MODEL CODE	TEA45 124 8
QUANTITY	1	MODEL	4DES-5Y	QUANTITY	1
FAN QUANTITY	1	POWER	5 HP	FAN QUANTITY	2
FAN DIA. Ø (mm)	500	TYPE	YARI HERMETİK	FAN DIA. Ø (mm)	450
CAPACITY (KW)	17,5	NOMINAL CURRENT (A.)		CAPACITY (KW)	7,51
SURFACE (m²)	43	DISCHARGE-SUCTION CONN.	1/2-1 1/8	SURFACE (m²)	29,6

LINE EQUIPMENTS	ECO	PLS
RECEIVER (GUVEN)	✓	✓
OIL SEPARATOR (GUVEN)	✓	✓
LIQUID ACCUMULATOR (GUVEN)	✓	✓
CAPILARY TUBES & MANOMETERS (T-COLD)	✗	✓
LP/HP SWITCH (REFNOX)	✓	✗
HP & COMBINE PRESSOSTAD (DANFOSS)	✗	✓
SIGHTGLASSES (DANFOSS)	✓	✓
SELENOID VALVE (DANFOSS)	✗	✓
DRAIR (DANFOSS / T-COLD)	✓	✓
ABSORBER (COLDTHERM)	✓	✓
DIGITAL CONTROLLER (DANFOSS / AKO / ELIWE)	✓	✓
ELECTRICAL EQUIPMENTS (SCHNEIDER)	✓	✓
FANS (ZEIHL-ABAGG, ROSENBERG, EBM)	✗	✓

DIAGRAM OF EQUIPMENTS HAS BEEN PRESENTED VISUALLY.



CONDITIONS OF COMPRESSOR CAPACITY

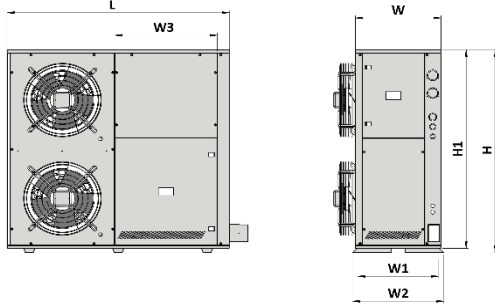
TO / TC (°C)	-18/+40	-18/+45	-18/+50	-25/+40	-25/+45	-25/+50	-31/+40	-31/+45	-31/+50
COOLING CAPACITY (kW)	10,48	9,50	8,51	7,55	6,82	6,07	5,55	4,98	4,41
POWER CUMSUPTION (kW)	5,03	5,23	5,41	4,29	4,41	4,51	3,63	3,70	3,74
COP (w/w)	2,08	1,82	1,57	1,76	1,54	1,35	1,53	1,35	1,18

IFCESTR B 6000 N



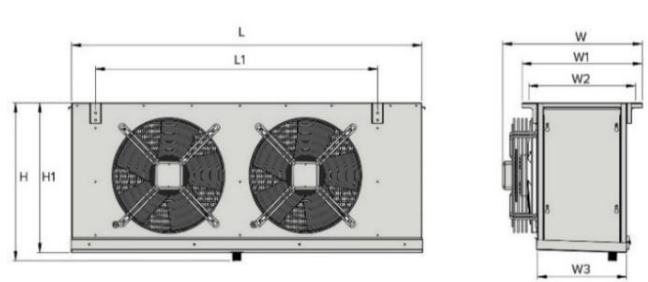
OUTER UNIT (CONDANSER) DIMENSIONS

L	L1	H	H1	W	W1	W2	W3
1450	0	1259	1231	500	521	535	751



INNER UNIT (EVAPORATOR) DIMENSION

L	L1	H	H1	W	W1	W2	W3
1585	1325	730	720	520	440	385	325



OUTER UNIT (CONDANSER)

kg = ----

kg = ----

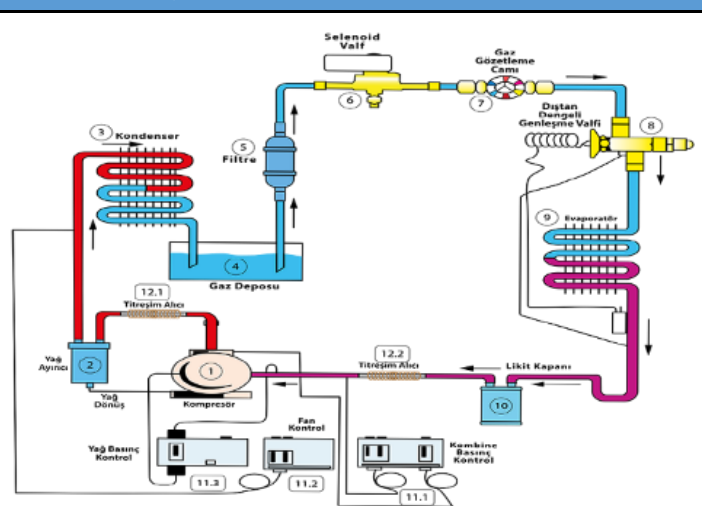
INNER UNIT'S DRAINAGE Ø = 33 mm

TECHNICAL FEATURES

OUTER UNIT (CONDANSER)		COMPRESSOR		INNER UNIT (EVAPORATOR)	
MODEL CODE	SNOWBOX 9-7	BRAND	BİTZER	MODEL CODE	TEA50 124 8
QUANTITY	1	MODEL	4EES-6Y	QUANTITY	1
FAN QUANTITY	2	POWER	6 HP	FAN QUANTITY	2
FAN DIA. Ø (mm)	500	TYPE	YARI HERMETİK	FAN DIA. Ø (mm)	500
CAPACITY (KW)	26	NOMINAL CURRENT (A.)		CAPACITY (KW)	8,93
SURFACE (m²)	52	DISCHARGE-SUCTION CONN.	1/2-1 1/8	SURFACE (m²)	29,6

LINE EQUIPMENTS	ECO	PLS
RECEIVER (GUVEN)	✓	✓
OIL SEPARATOR (GUVEN)	✓	✓
LIQUID ACCUMULATOR (GUVEN)	✓	✓
CAPILARY TUBES & MANOMETERS (T-COLD)	✗	✓
LP/HP SWITCH (REFNOX)	✓	✗
HP & COMBINE PRESSOSTAD (DANFOSS)	✗	✓
SIGHTGLASSES (DANFOSS)	✓	✓
SELENOID VALVE (DANFOSS)	✗	✓
DRAIR (DANFOSS / T-COLD)	✓	✓
ABSORBER (COLDTHERM)	✓	✓
DIGITAL CONTROLLER (DANFOSS / AKO / ELIWE)	✓	✓
ELECTRICAL EQUIPMENTS (SCHNEIDER)	✓	✓
FANS (ZEIHL-ABAGG, ROSENBERG, EBM)	✗	✓

DIAGRAM OF EQUIPMENTS HAS BEEN PRESENTED VISUALLY.



CONDITIONS OF COMPRESSOR CAPACITY

TO / TC (°C)	-18/+40	-18/+45	-18/+50	-25/+40	-25/+45	-25/+50	-31/+40	-31/+45	-31/+50
COOLING CAPACITY (kW)	8,90	8,04	7,17	6,38	5,74	5,08	4,66	4,16	3,66
POWER CUMSUPTION (kW)	4,26	4,41	4,53	3,63	3,72	3,78	3,08	3,11	3,12
COP (w/w)	2,09	1,82	1,58	1,76	1,54	1,35	1,51	1,34	1,17

IFCESTR B 9000 P

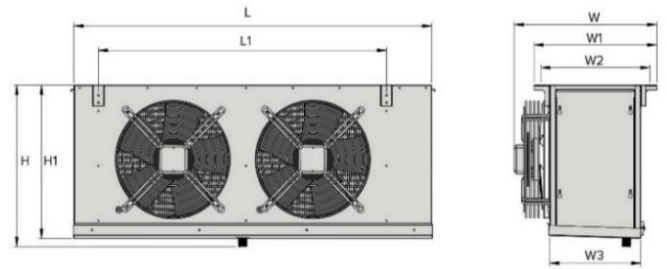
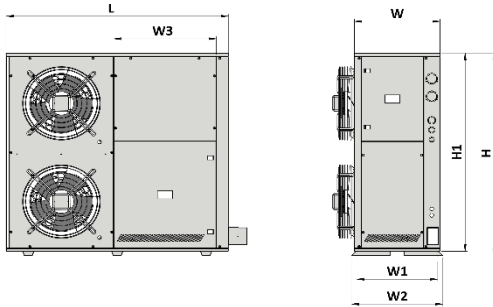


OUTER UNIT (CONDANSER) DIMENSIONS

L	L1	H	H1	W	W1	W2	W3
1450	0	1259	1231	500	521	535	751

INNER UNIT (EVAPORATOR) DIMENSION

L	L1	H	H1	W	W1	W2	W3
1585	1325	730	720	610	520	475	405



OUTER UNIT (CONDANSER)

kg = ----

kg = ----

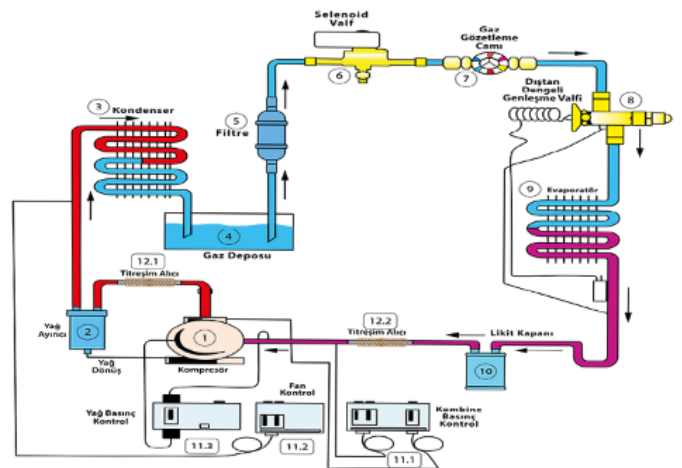
INNER UNIT'S DRAINAGE Ø = 33 mm

TECHNICAL FEATURES

OUTER UNIT (CONDANSER)		COMPRESSOR		INNER UNIT (EVAPORATOR)	
MODEL CODE	SNOWBOX 9-7	BRAND	BİTZER	MODEL CODE	TEA50 125 8
QUANTITY	1	MODEL	4TES-9Y	QUANTITY	1
FAN QUANTITY	2	POWER	9 HP	FAN QUANTITY	2
FAN DIA. Ø (mm)	500	TYPE	YARI HERMETİK	FAN DIA. Ø (mm)	500
CAPACITY (KW)	26	NOMINAL CURRENT (A.)		CAPACITY (KW)	10,74
SURFACE (m²)	52	DISCHARGE-SUCTION CONN.	5/8-1 3/8	SURFACE (m²)	37,26

LINE EQUIPMENTS	ECO	PLS
RECEIVER (GUVEN)	✓	✓
OIL SEPARATOR (GUVEN)	✓	✓
LIQUID ACCUMULATOR (GUVEN)	✓	✓
CAPILARY TUBES & MANOMETERS (T-COLD)	✗	✓
LP/HP SWITCH (REFNOX)	✓	✗
HP & COMBINE PRESSOSTAD (DANFOSS)	✗	✓
SIGHTGLASSES (DANFOSS)	✓	✓
SELENOID VALVE (DANFOSS)	✗	✓
DRAIR (DANFOSS / T-COLD)	✓	✓
ABSORBER (COLDTHERM)	✓	✓
DIGITAL CONTROLLER (DANFOSS / AKO / ELIWE)	✓	✓
ELECTRICAL EQUIPMENTS (SCHNEIDER)	✓	✓
FANS (ZEIHL-ABAGG, ROSENBERG, EBM)	✗	✓

DIAGRAM OF EQUIPMENTS HAS BEEN PRESENTED VISUALLY.



CONDITIONS OF COMPRESSOR CAPACITY

TO / TC (°C)	-18/+40	-18/+45	-18/+50	-25/+40	-25/+45	-25/+50	-31/+40	-31/+45	-31/+50
COOLING CAPACITY (kW)	16,25	14,63	13,02	11,50	10,28	9,06	8,27	7,31	6,38
POWER CUMSUPTION (kW)	7,46	7,73	7,98	6,20	6,35	6,48	5,12	5,19	5,24
COP (w/w)	2,18	1,89	1,63	1,86	1,62	1,40	1,61	1,41	1,22

IFCESTR B 12000 N

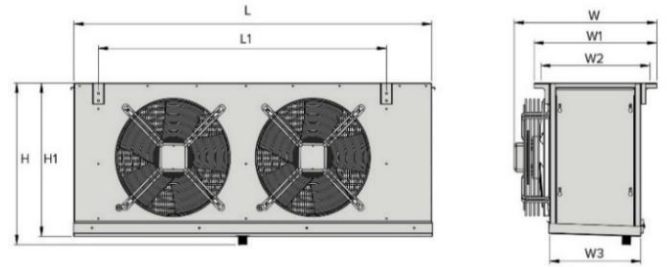
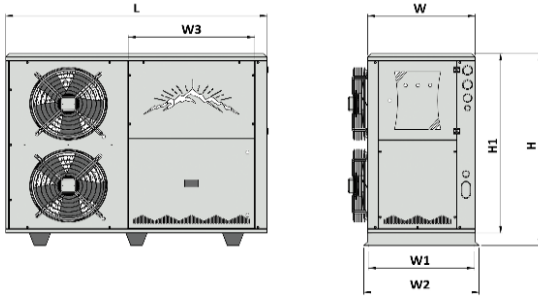


OUTER UNIT (CONDANSER) DIMENSIONS

L	L1	H	H1	W	W1	W2	W3
1700	0	1333	1247	700	690	750	823

INNER UNIT (EVAPORATOR) DIMENSION

L	L1	H	H1	W	W1	W2	W3
1585	1325	730	720	610	520	475	405



OUTER UNIT (CONDANSER)

kg = ----

kg = ----

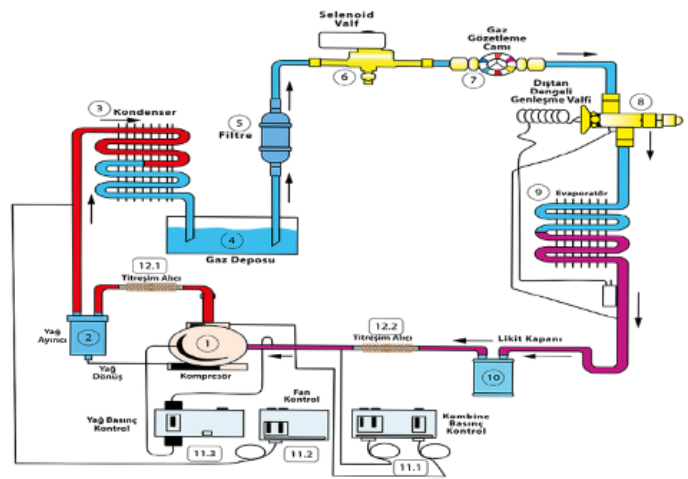
INNER UNIT'S DRAINAGE Ø = 33 mm

TECHNICAL FEATURES

OUTER UNIT (CONDANSER)		COMPRESSOR		INNER UNIT (EVAPORATOR)	
MODEL CODE	EWEREST 10-44	BRAND	BİTZER	MODEL CODE	TEA50 126 8
QUANTITY	1	MODEL	4PES-12Y	QUANTITY	1
FAN QUANTITY	2	POWER	12 HP	FAN QUANTITY	2
FAN DIA. Ø (mm)	500	TYPE	YARI HERMETİK	FAN DIA. Ø (mm)	500
CAPACITY (KW)	45	NOMINAL CURRENT (A.)		CAPACITY (KW)	11,89
SURFACE (m²)	135	DISCHARGE-SUCTION CONN.	5/8-1 3/8	SURFACE (m²)	44,7

LINE EQUIPMENTS	ECO	PLS
RECEIVER (GUVEN)	✓	✓
OIL SEPARATOR (GUVEN)	✓	✓
LIQUID ACCUMULATOR (GUVEN)	✓	✓
CAPILARY TUBES & MANOMETERS (T-COLD)	x	✓
LP/HP SWITCH (REFNOX)	✓	x
HP & COMBINE PRESSOSTAD (DANFOSS)	x	✓
SIGHTGLASSES (DANFOSS)	✓	✓
SELENOID VALVE (DANFOSS)	x	✓
DRAIR (DANFOSS / T-COLD)	✓	✓
ABSORBER (COLDTHERM)	✓	✓
DIGITAL CONTROLLER (DANFOSS / AKO / ELIWE)	✓	✓
ELECTRICAL EQUIPMENTS (SCHNEIDER)	✓	✓
FANS (ZEIHL-ABAGG, ROSENBERG, EBM)	x	✓

DIAGRAM OF EQUIPMENTS HAS BEEN PRESENTED VISUALLY.



CONDITIONS OF COMPRESSOR CAPACITY

TO / TC (°C)	-18/+40	-18/+45	-18/+50	-25/+40	-25/+45	-25/+50	-31/+40	-31/+45	-31/+50
COOLING CAPACITY (kW)	18,34	16,39	14,45	12,80	11,32	9,86	9,04	7,89	6,76
POWER CUMSUPTION (kW)	8,28	8,49	8,64	6,81	6,88	6,89	5,55	5,52	5,43
COP (w/w)	2,22	1,93	1,67	1,88	1,65	1,43	1,63	1,43	1,25

IFCESTR B 9000 N

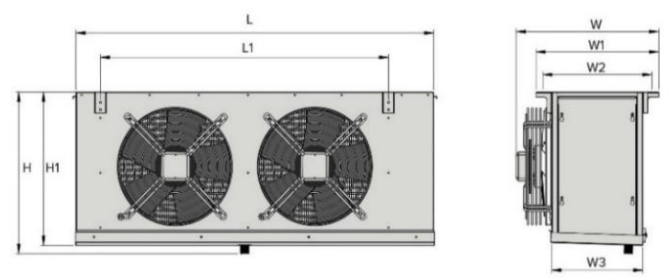
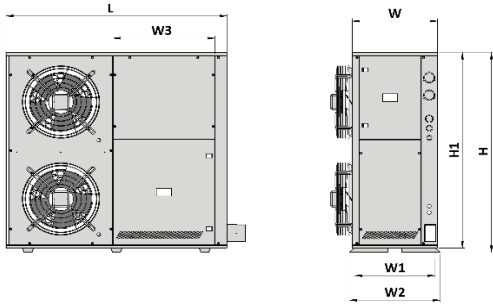


OUTER UNIT (CONDANSER) DIMENSIONS

L	L1	H	H1	W	W1	W2	W3
1450	0	1259	1231	500	521	535	751

INNER UNIT (EVAPORATOR) DIMENSION

L	L1	H	H1	W	W1	W2	W3
1585	1325	730	720	610	520	475	405



OUTER UNIT (CONDANSER)

kg = ----

kg = ----

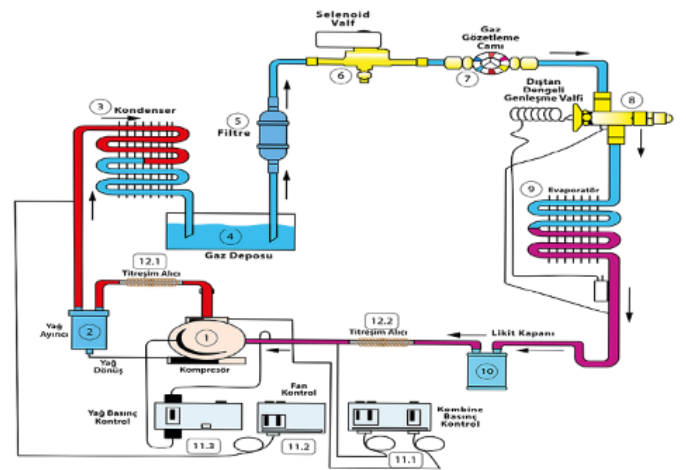
INNER UNIT'S DRAINAGE Ø = 33 mm

TECHNICAL FEATURES

OUTER UNIT (CONDANSER)		COMPRESSOR		INNER UNIT (EVAPORATOR)	
MODEL CODE	SNOWBOX 9-7	BRAND	BİTZER	MODEL CODE	TEA50 125 8
QUANTITY	1	MODEL	4TES-9Y	QUANTITY	1
FAN QUANTITY	2	POWER	9 HP	FAN QUANTITY	2
FAN DIA. Ø (mm)	500	TYPE	YARI HERMETİK	FAN DIA. Ø (mm)	500
CAPACITY (KW)	26	NOMINAL CURRENT (A.)		CAPACITY (KW)	10,747
SURFACE (m²)	52	DISCHARGE-SUCTION CONN.	5/8 - 1 3/8	SURFACE (m²)	37,26

LINE EQUIPMENTS	ECO	PLS
RECEIVER (GUVEN)	✓	✓
OIL SEPARATOR (GUVEN)	✓	✓
LIQUID ACCUMULATOR (GUVEN)	✓	✓
CAPILARY TUBES & MANOMETERS (T-COLD)	✗	✓
LP/HP SWITCH (REFNOX)	✓	✗
HP & COMBINE PRESSOSTAD (DANFOSS)	✗	✓
SIGHTGLASSES (DANFOSS)	✓	✓
SELENOID VALVE (DANFOSS)	✗	✓
DRAIR (DANFOSS / T-COLD)	✓	✓
ABSORBER (COLDTHERM)	✓	✓
DIGITAL CONTROLLER (DANFOSS / AKO / ELIWE)	✓	✓
ELECTRICAL EQUIPMENTS (SCHNEIDER)	✓	✓
FANS (ZEIHL-ABAGG, ROSENBERG, EBM)	✗	✓

DIAGRAM OF EQUIPMENTS HAS BEEN PRESENTED VISUALLY.



CONDITIONS OF COMPRESSOR CAPACITY

TO / TC (°C)	-18/+40	-18/+45	-18/+50	-25/+40	-25/+45	-25/+50	-31/+40	-31/+45	-31/+50
COOLING CAPACITY (kW)	16,25	14,63	13,02	11,50	10,28	9,06	8,27	7,31	6,38
POWER CUMSUPTION (kW)	7,46	7,73	7,98	6,20	6,35	6,48	5,12	5,19	5,24
COP (w/w)	2,18	1,89	1,63	1,86	1,62	1,40	1,61	1,41	1,22

IFCESTR B 12000 N

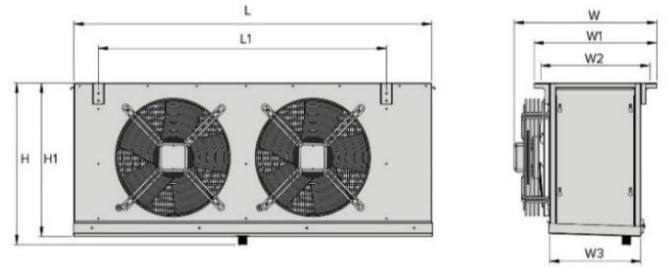
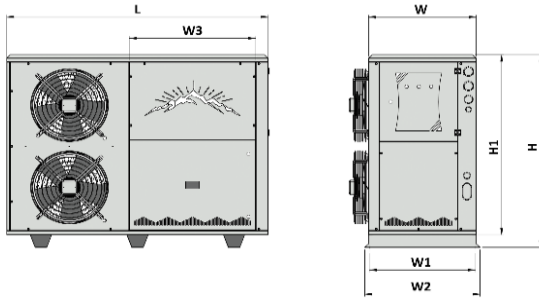


OUTER UNIT (CONDANSER) DIMENSIONS

L	L1	H	H1	W	W1	W2	W3
1700	0	1333	1247	700	690	750	823

INNER UNIT (EVAPORATOR) DIMENSION

L	L1	H	H1	W	W1	W2	W3
1585	1325	730	720	610	520	475	405



OUTER UNIT (CONDANSER)

kg = ----

kg = ----

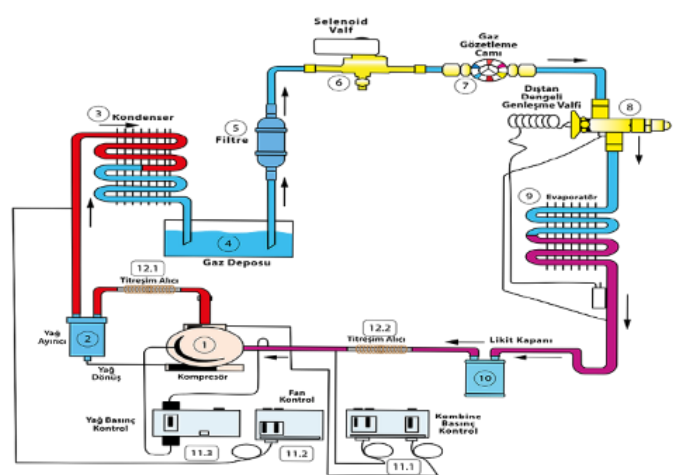
INNER UNIT'S DRAINAGE Ø = 33 mm

TECHNICAL FEATURES

OUTER UNIT (CONDANSER)		COMPRESSOR		INNER UNIT (EVAPORATOR)	
MODEL CODE	EWEREST 10-44	BRAND	BİTZER	MODEL CODE	TEA50 126 8
QUANTITY	1	MODEL	4PES-12Y	QUANTITY	1
FAN QUANTITY	2	POWER	12 HP	FAN QUANTITY	2
FAN DIA. Ø (mm)	500	TYPE	YARI HERMETİK	FAN DIA. Ø (mm)	500
CAPACITY (KW)	45	NOMINAL CURRENT (A.)		CAPACITY (KW)	11,89
SURFACE (m²)	135	DISCHARGE-SUCTION CONN.	5/8-1 3/8	SURFACE (m²)	44,7

LINE EQUIPMENTS	ECO	PLS
RECEIVER (GUVEN)	✓	✓
OIL SEPARATOR (GUVEN)	✓	✓
LIQUID ACCUMULATOR (GUVEN)	✓	✓
CAPILARY TUBES & MANOMETERS (T-COLD)	✗	✓
LP/HP SWITCH (REFNOX)	✓	✗
HP & COMBINE PRESSOSTAD (DANFOSS)	✗	✓
SIGHTGLASSES (DANFOSS)	✓	✓
SELENOID VALVE (DANFOSS)	✗	✓
DRAIR (DANFOSS / T-COLD)	✓	✓
ABSORBER (COLDTHERM)	✓	✓
DIGITAL CONTROLLER (DANFOSS / AKO / ELIWEI)	✓	✓
ELECTRICAL EQUIPMENTS (SCHNEIDER)	✓	✓
FANS (ZEIHL-ABAGG, ROSENBERG, EBM)	✗	✓

DIAGRAM OF EQUIPMENTS HAS BEEN PRESENTED VISUALLY.



CONDITIONS OF COMPRESSOR CAPACITY

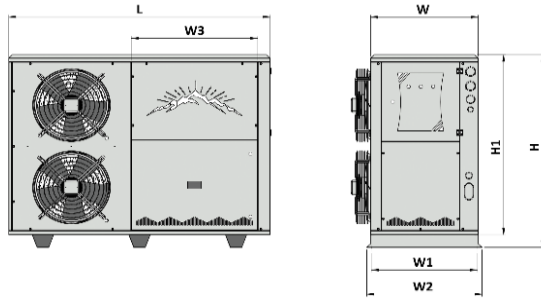
TO / TC (°C)	-18/+40	-18/+45	-18/+50	-25/+40	-25/+45	-25/+50	-31/+40	-31/+45	-31/+50
COOLING CAPACITY (kW)	18,34	16,39	14,45	12,80	11,32	9,86	9,04	7,89	6,76
POWER CUMSUPTION (kW)	8,28	8,49	8,64	6,81	6,88	6,89	5,55	5,52	5,43
COP (w/w)	2,22	1,93	1,67	1,88	1,65	1,43	1,63	1,43	1,25

IFCESTR B 14000 N



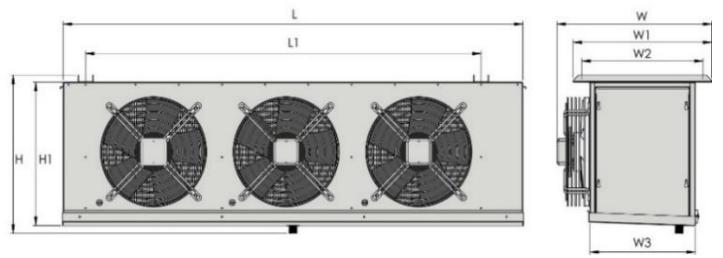
OUTER UNIT (CONDANSER) DIMENSIONS

L	L1	H	H1	W	W1	W2	W3
1700	0	1333	1247	700	690	750	823



INNER UNIT (EVAPORATOR) DIMENSION

L	L1	H	H1	W	W1	W2	W3
2250	1980	730	725	610	455	395	325



OUTER UNIT (CONDANSER)

kg = ----

kg = ----

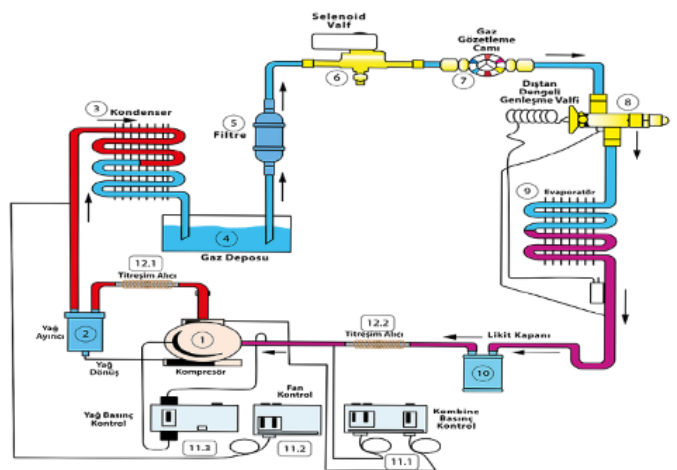
INNER UNIT'S DRAINAGE Ø = 33 mm

TECHNICAL FEATURES

OUTER UNIT (CONDANSER)		COMPRESSOR		INNER UNIT (EVAPORATOR)	
MODEL CODE	EWEREST 10-44	BRAND	BİTZER	MODEL CODE	TEA50 134 8
QUANTITY	1	MODEL	4NES-14Y	QUANTITY	1
FAN QUANTITY	2	POWER	14 HP	FAN QUANTITY	3
FAN DIA. Ø (mm)	500	TYPE	YARI HERMETİK	FAN DIA. Ø (mm)	500
CAPACITY (KW)	45	NOMINAL CURRENT (A.)		CAPACITY (KW)	13,37
SURFACE (m²)	135	DISCHARGE-SUCTION CONN.	5/8-1 3/8	SURFACE (m²)	44,71

LINE EQUIPMENTS	ECO	PLS
RECEIVER (GUVEN)	✓	✓
OIL SEPARATOR (GUVEN)	✓	✓
LIQUID ACCUMULATOR (GUVEN)	✓	✓
CAPILARY TUBES & MANOMETERS (T-COLD)	x	✓
LP/HP SWITCH (REFNOX)	✓	x
HP & COMBINE PRESSOSTAD (DANFOSS)	x	✓
SIGHTGLASSES (DANFOSS)	✓	✓
SELENOID VALVE (DANFOSS)	x	✓
DRAIR (DANFOSS / T-COLD)	✓	✓
ABSORBER (COLDTHERM)	✓	✓
DIGITAL CONTROLLER (DANFOSS / AKO / ELIWE)	✓	✓
ELECTRICAL EQUIPMENTS (SCHNEIDER)	✓	✓
FANS (ZEIHL-ABAGG, ROSENBERG, EBM)	x	✓

DIAGRAM OF EQUIPMENTS HAS BEEN PRESENTED VISUALLY.



CONDITIONS OF COMPRESSOR CAPACITY

TO / TC (°C)	-18/+40	-18/+45	-18/+50	-25/+40	-25/+45	-25/+50	-31/+40	-31/+45	-31/+50
COOLING CAPACITY (kW)	22,10	19,88	17,62	15,64	13,95	12,24	11,24	9,91	8,59
POWER CUMSUPTION (kW)	10,14	10,45	10,66	8,45	8,58	8,61	6,98	6,98	6,89
COP (w/w)	2,18	1,90	1,65	1,85	1,63	1,42	1,61	1,42	1,25

IFCESTR B 15000 N

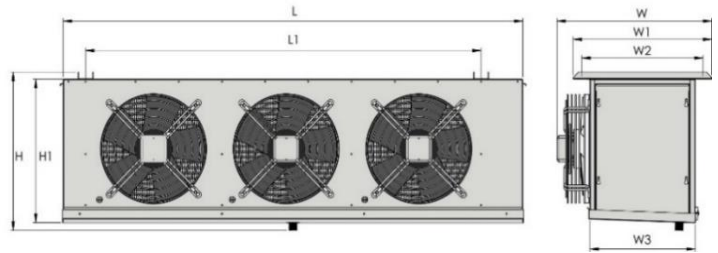
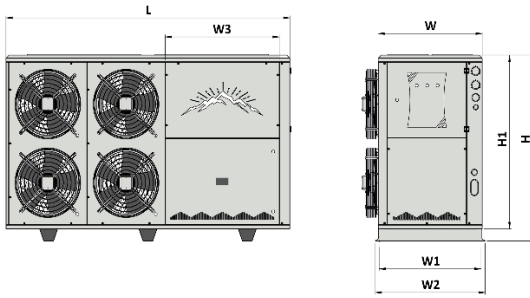


OUTER UNIT (CONDANSER) DIMENSIONS

L	L1	H	H1	W	W1	W2	W3
2180	0	1349	1262	800	783	844	876

INNER UNIT (EVAPORATOR) DIMENSION

L	L1	H	H1	W	W1	W2	W3
2550	2280	810	805	520	455	395	325



OUTER UNIT (CONDANSER)

kg = ----

kg = ----

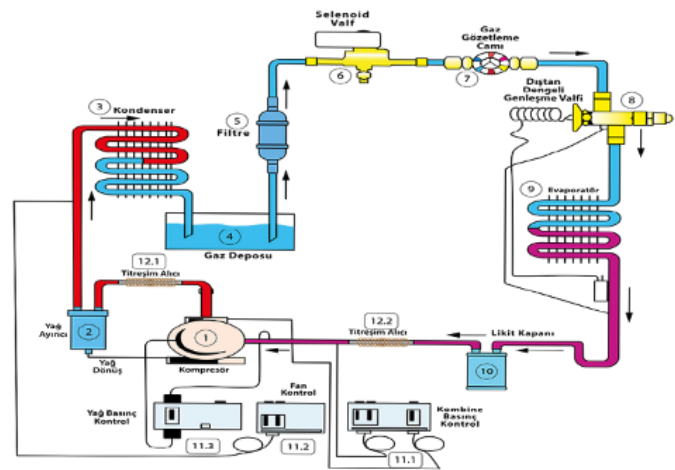
INNER UNIT'S DRAINAGE Ø = 33 mm

TECHNICAL FEATURES

OUTER UNIT (CONDANSER)		COMPRESSOR		INNER UNIT (EVAPORATOR)	
MODEL CODE	EWERESR 10-45	BRAND	BİTZER	MODEL CODE	TEA50 134 8 T2
QUANTITY	1	MODEL	4JE-15Y	QUANTITY	1
FAN QUANTITY	4	POWER	15 HP	FAN QUANTITY	3
FAN DIA. Ø (mm)	450	TYPE	YARI HERMETİK	FAN DIA. Ø (mm)	500
CAPACITY (KW)	45	NOMINAL CURRENT (A.)		CAPACITY (KW)	16,700
SURFACE (m²)	110	DISCHARGE-SUCTION CONN.	5/8-1 5/8	SURFACE (m²)	58,03

LINE EQUIPMENTS	ECO	PLS
RECEIVER (GUVEN)	✓	✓
OIL SEPARATOR (GUVEN)	✓	✓
LIQUID ACCUMULATOR (GUVEN)	✓	✓
CAPILARY TUBES & MANOMETERS (T-COLD)	x	✓
LP/HP SWITCH (REFNOX)	✓	x
HP & COMBINE PRESSOSTAD (DANFOSS)	x	✓
SIGHTGLASSES (DANFOSS)	✓	✓
SELENOID VALVE (DANFOSS)	x	✓
DRAIR (DANFOSS / T-COLD)	✓	✓
ABSORBER (COLDTHERM)	✓	✓
DIGITAL CONTROLLER (DANFOSS / AKO / ELIWE)	✓	✓
ELECTRICAL EQUIPMENTS (SCHNEIDER)	✓	✓
FANS (ZEIHL-ABAGG, ROSENBERG, EBM)	x	✓

DIAGRAM OF EQUIPMENTS HAS BEEN PRESENTED VISUALLY.



CONDITIONS OF COMPRESSOR CAPACITY

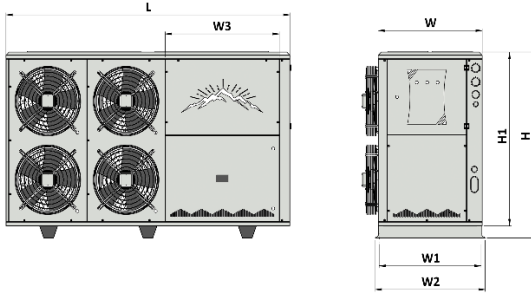
TO / TC (°C)	-18/+40	-18/+45	-18/+50	-25/+40	-25/+45	-25/+50	-31/+40	-31/+45	-31/+50
COOLING CAPACITY (kW)	25,9	23,4	21,00	18,60	16,70	14,81	13,53	12,03	10,55
POWER CUMSUPTION (kW)	11,59	11,99	12,31	9,84	10,04	10,18	8,30	8,37	8,37
COP (w/w)	2,23	1,96	1,70	1,89	1,66	1,46	1,63	1,44	1,26

IFCESTR B 18000 N



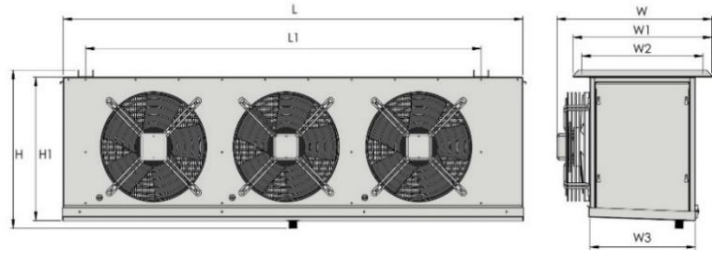
OUTER UNIT (CONDANSER) DIMENSIONS

L	L1	H	H1	W	W1	W2	W3
2180	0	1349	1262	800	783	844	876



INNER UNIT (EVAPORATOR) DIMENSION

L	L1	H	H1	W	W1	W2	W3
2550	2280	810	805	610	535	475	405



OUTER UNIT (CONDANSER)

kg = ----

kg = ----

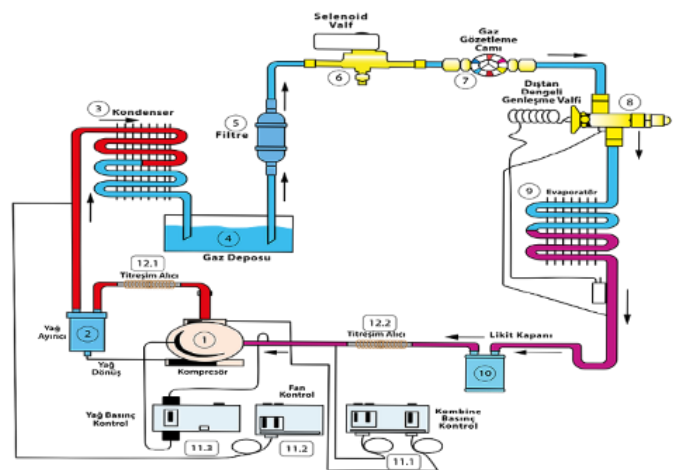
INNER UNIT'S DRAINAGE Ø = 33 mm

TECHNICAL FEATURES

OUTER UNIT (CONDANSER)		COMPRESSOR		INNER UNIT (EVAPORATOR)	
MODEL CODE	EWEREST 10-55	BRAND	BİTZER	MODEL	TEA50 136 8 T2
QUANTITY	1	MODEL	4HE-18Y	ADET	1
FAN QUANTITY	4	POWER	18 HP	FAN ADET	3
FAN DIA. Ø (mm)	500	TYPE	YARI HERMETİK	FAN ÇAPI (mm)	500
CAPACITY (KW)	55	NOMINAL CURRENT (A.)		KAPASİTE(KW)	22,40
SURFACE (m²)	110	DISCHARGE-SUCTION CONN.	5/8-1 5/8	YÜZEY ALANI (m²)	87,05

LINE EQUIPMENTS	ECO	PLS
RECEIVER (GUVEN)	✓	✓
OIL SEPARATOR (GUVEN)	✓	✓
LIQUID ACCUMULATOR (GUVEN)	✓	✓
CAPILARY TUBES & MANOMETERS (T-COLD)	✗	✓
LP/HP SWITCH (REFNOX)	✓	✗
HP & COMBINE PRESSOSTAD (DANFOSS)	✗	✓
SIGHTGLASSES (DANFOSS)	✓	✓
SELENOID VALVE (DANFOSS)	✗	✓
DRAIR (DANFOSS / T-COLD)	✓	✓
ABSORBER (COLDTHERM)	✓	✓
DIGITAL CONTROLLER (DANFOSS / AKO / ELIWE)	✓	✓
ELECTRICAL EQUIPMENTS (SCHNEIDER)	✓	✓
FANS (ZEIHL-ABAGG, ROSENBERG, EBM)	✗	✓

DIAGRAM OF EQUIPMENTS HAS BEEN PRESENTED VISUALLY.



CONDITIONS OF COMPRESSOR CAPACITY

TO / TC (°C)	-18/+40	-18/+45	-18/+50	-25/+40	-25/+45	-25/+50	-31/+40	-31/+45	-31/+50
COOLING CAPACITY (kW)	30,5	27,70	24,80	22,00	19,88	17,72	16,19	14,50	12,82
POWER CUMSUPTION (kW)	13,82	14,32	14,75	11,72	12,00	12,22	9,90	10,03	10,10
COP (w/w)	2,21	1,93	1,68	1,88	1,66	1,45	1,64	1,45	1,27

IFCESTR B 23000 N

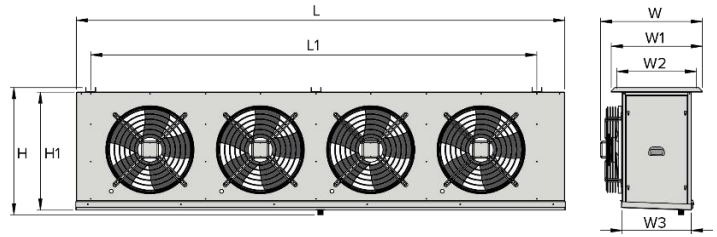
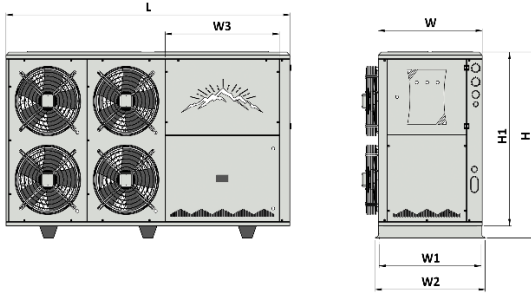


OUTER UNIT (CONDANSER) DIMENSIONS

L	L1	H	H1	W	W1	W2	W3
2180	0	1349	1262	800	783	844	876

INNER UNIT (EVAPORATOR) DIMENSION

L	L1	H	H1	W	W1	W2	W3
2900	2630	730	725	610	535	475	405



OUTER UNIT (CONDANSER)

kg = ----

kg = ----

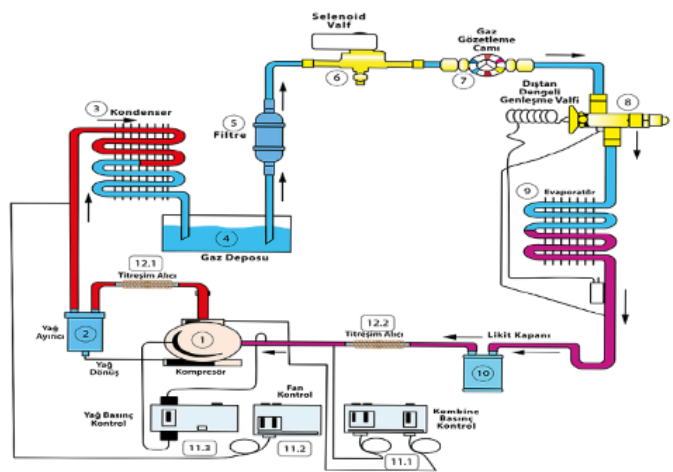
INNER UNIT'S DRAINAGE Ø = 33 mm

TECHNICAL FEATURES

OUTER UNIT (CONDANSER)		COMPRESSOR		INNER UNIT (EVAPORATOR)	
MODEL CODE	EWEREST 10-55	BRAND	BİTZER	MODEL CODE	TEA50 146 8
QUANTITY	1	MODEL	4GE-23Y	QUANTITY	1
FAN QUANTITY	4	POWER	23 HP	FAN QUANTITY	4
FAN DIA. Ø (mm)	500	TYPE	YARI HERMETİK	FAN DIA. Ø (mm)	500
CAPACITY (KW)	55	NOMINAL CURRENT (A.)		CAPACITY (KW)	24,07
SURFACE (m²)	110	DISCHARGE-SUCTION CONN.	7/8-2 1/8	SURFACE (m²)	89,41

LINE EQUIPMENTS	ECO	PLS
RECEIVER (GUVEN)	✓	✓
OIL SEPARATOR (GUVEN)	✓	✓
LIQUID ACCUMULATOR (GUVEN)	✓	✓
CAPILARY TUBES & MANOMETERS (T-COLD)	✗	✓
LP/HP SWITCH (REFNOX)	✓	✗
HP & COMBINE PRESSOSTAD (DANFOSS)	✗	✓
SIGHTGLASSES (DANFOSS)	✓	✓
SELENOID VALVE (DANFOSS)	✗	✓
DRAIR (DANFOSS / T-COLD)	✓	✓
ABSORBER (COLDTHERM)	✓	✓
DIGITAL CONTROLLER (DANFOSS / AKO / ELIWE)	✓	✓
ELECTRICAL EQUIPMENTS (SCHNEIDER)	✓	✓
FANS (ZEIHL-ABAGG, ROSENBERG, EBM)	✗	✓

DIAGRAM OF EQUIPMENTS HAS BEEN PRESENTED VISUALLY.



CONDITIONS OF COMPRESSOR CAPACITY

TO / TC (°C)	-18/+40	-18/+45	-18/+50	-25/+40	-25/+45	-25/+50	-31/+40	-31/+45	-31/+50
COOLING CAPACITY (kW)	35,50	32,30	29,00	25,90	23,40	21,00	19,18	17,31	15,44
POWER CUMSUPTION (kW)	16,39	17,03	17,59	13,88	14,27	14,58	11,73	11,95	12,10
COP (w/w)	2,17	1,90	1,65	1,86	1,64	1,44	1,64	1,45	1,28

IFCESTR B 25000 N

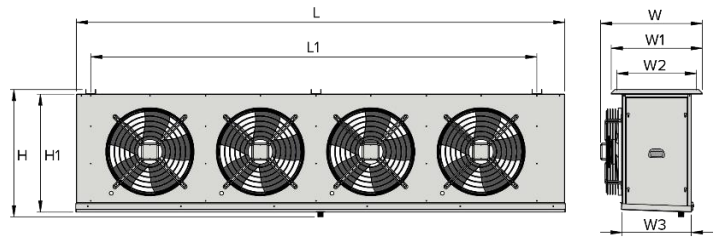
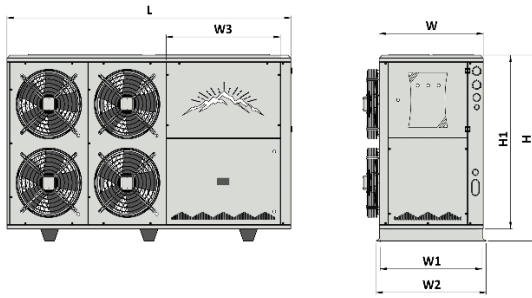


OUTER UNIT (CONDANSER) DIMENSIONS

L	L1	H	H1	W	W1	W2	W3
2180	0	1349	1262	800	783	844	876

INNER UNIT (EVAPORATOR) DIMENSION

L	L1	H	H1	W	W1	W2	W3
2900	2630	730	725	610	535	475	405



OUTER UNIT (CONDANSER)

kg = ----

kg = ----

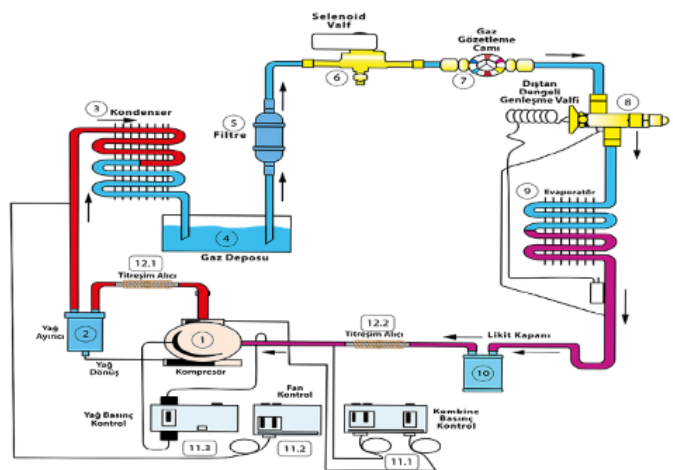
INNER UNIT'S DRAINAGE Ø = 33 mm

TECHNICAL FEATURES

OUTER UNIT (CONDANSER)		COMPRESSOR		INNER UNIT (EVAPORATOR)	
MODEL CODE	EWEREST 10-63	BRAND	BİTZER	MODEL CODE	TEA50 146 8
QUANTITY	1	MODEL	6JE-25Y	QUANTITY	1
FAN QUANTITY	4	POWER	25 HP	FAN QUANTITY	4
FAN DIA. Ø (mm)	500	TYPE	YARI HERMETİK	FAN DIA. Ø (mm)	500
CAPACITY (KW)	63	NOMINAL CURRENT (A.)		CAPACITY (KW)	24,07
SURFACE (m²)	153	DISCHARGE-SUCTION CONN.	7/8-1 3/8	SURFACE (m²)	89,41

LINE EQUIPMENTS	ECO	PLS
RECEIVER (GUVEN)	✓	✓
OIL SEPARATOR (GUVEN)	✓	✓
LIQUID ACCUMULATOR (GUVEN)	✓	✓
CAPILARY TUBES & MANOMETERS (T-COLD)	x	✓
LP/HP SWITCH (REFNOX)	✓	x
HP & COMBINE PRESSOSTAD (DANFOSS)	x	✓
SIGHTGLASSES (DANFOSS)	✓	✓
SELENOID VALVE (DANFOSS)	x	✓
DRAIR (DANFOSS / T-COLD)	✓	✓
ABSORBER (COLDTHERM)	✓	✓
DIGITAL CONTROLLER (DANFOSS / AKO / ELIWE)	✓	✓
ELECTRICAL EQUIPMENTS (SCHNEIDER)	✓	✓
FANS (ZEIHL-ABAGG, ROSENBERG, EBM)	x	✓

DIAGRAM OF EQUIPMENTS HAS BEEN PRESENTED VISUALLY.



CONDITIONS OF COMPRESSOR CAPACITY

TO / TC (°C)	-18/+40	-18/+45	-18/+50	-25/+40	-25/+45	-25/+50	-31/+40	-31/+45	-31/+50
COOLING CAPACITY (kW)	38,50	34,90	31,30	27,70	24,9	22,10	20,20	17,96	15,78
POWER CUMSUPTION (kW)	17,17	17,77	18,26	14,52	14,84	15,06	12,17	12,28	12,29
COP (w/w)	2,24	1,96	1,71	1,91	1,68	1,47	1,66	1,46	1,28

IFCESTR B 28000 N

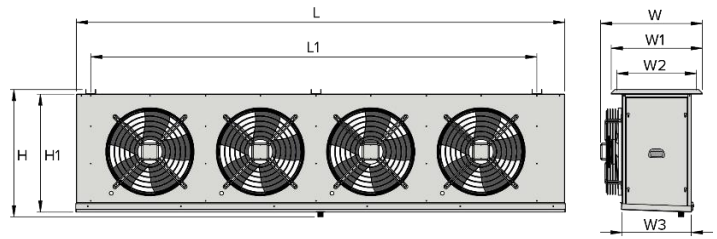
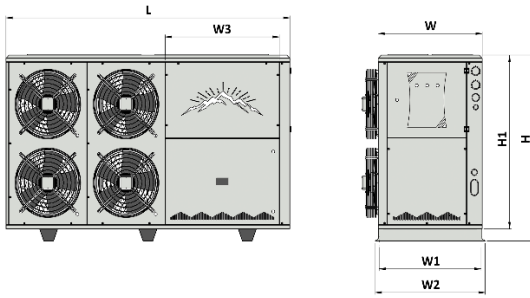


OUTER UNIT (CONDANSER) DIMENSIONS

L	L1	H	H1	W	W1	W2	W3
2450	0	1349	1262	800	784	844	796

INNER UNIT (EVAPORATOR) DIMENSION

L	L1	H	H1	W	W1	W2	W3
3300	3030	810	805	610	535	475	405



OUTER UNIT (CONDANSER)

kg = ----

kg = ----

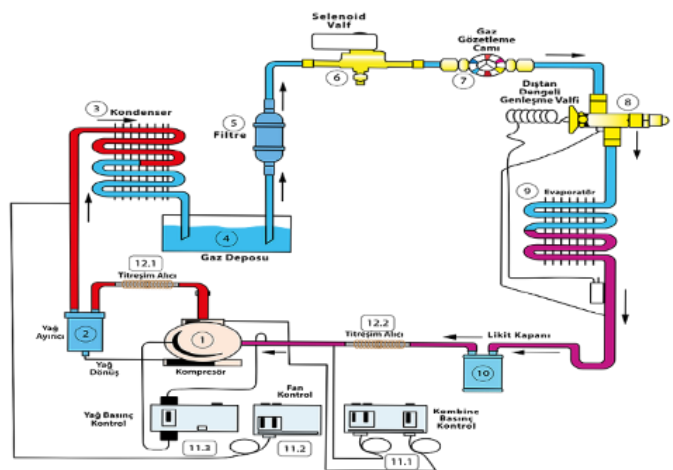
INNER UNIT'S DRAINAGE Ø = 33 mm

TECHNICAL FEATURES

OUTER UNIT (CONDANSER)		COMPRESSOR		INNER UNIT (EVAPORATOR)	
MODEL CODE	EWEREST 20-73	BRAND	BİTZER	MODEL CODE	TEA50 146 8 T2
QUANTITY	1	MODEL	6HE-28Y	QUANTITY	1
FAN QUANTITY	4	POWER	28 HP	FAN QUANTITY	4
FAN DIA. Ø (mm)	500	TYPE	YARI HERMETİK	FAN DIA. Ø (mm)	500
CAPACITY (KW)	73	NOMINAL CURRENT (A.)		CAPACITY (KW)	28,68
SURFACE (m²)	179	DISCHARGE-SUCTION CONN.	7/8-2 1/8	SURFACE (m²)	116,07

LINE EQUIPMENTS	ECO	PLS
RECEIVER (GUVEN)	✓	✓
OIL SEPARATOR (GUVEN)	✓	✓
LIQUID ACCUMULATOR (GUVEN)	✓	✓
CAPILARY TUBES & MANOMETERS (T-COLD)	✗	✓
LP/HP SWITCH (REFNOX)	✓	✗
HP & COMBINE PRESSOSTAD (DANFOSS)	✗	✓
SIGHTGLASSES (DANFOSS)	✓	✓
SELENOID VALVE (DANFOSS)	✗	✓
DRAIR (DANFOSS / T-COLD)	✓	✓
ABSORBER (COLDTHERM)	✓	✓
DIGITAL CONTROLLER (DANFOSS / AKO / ELIWE)	✓	✓
ELECTRICAL EQUIPMENTS (SCHNEIDER)	✓	✓
FANS (ZEIHL-ABAGG, ROSENBERG, EBM)	✗	✓

DIAGRAM OF EQUIPMENTS HAS BEEN PRESENTED VISUALLY.



CONDITIONS OF COMPRESSOR CAPACITY

TO / TC (°C)	-18/+40	-18/+45	-18/+50	-25/+40	-25/+45	-25/+50	-31/+40	-31/+45	-31/+50
COOLING CAPACITY (kW)	44,80	40,70	36,50	32,40	29,30	26,10	23,90	21,40	18,86
POWER CUMSUPTION (kW)	20,40	21,10	21,80	17,25	17,69	18,01	14,52	14,71	14,79
COP (w/w)	2,20	1,93	1,68	1,88	1,66	1,45	1,64	1,45	1,28

IFCESTR B 34000 N

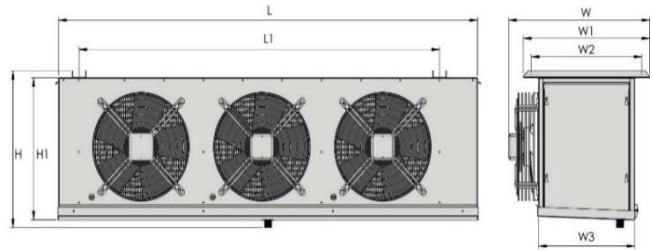
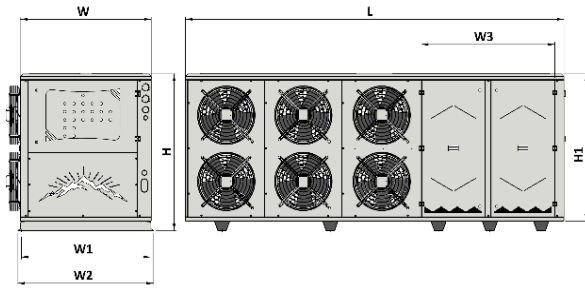


OUTER UNIT (CONDANSER) DIMENSIONS

L	L1	H	H1	W	W1	W2	W3
3000	0	1349	1262	800	784	844	846

INNER UNIT (EVAPORATOR) DIMENSION

L	L1	H	H1	W	W1	W2	W3
2250	1980	730	725	610	535	475	405



OUTER UNIT (CONDANSER)

kg = ----

kg = ----

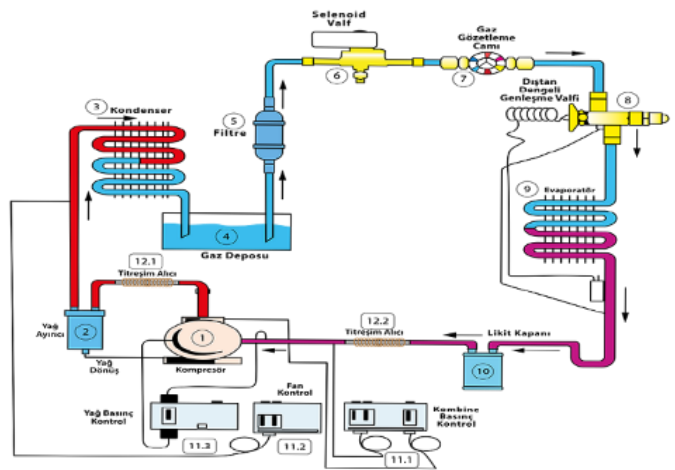
INNER UNIT'S DRAINAGE Ø = 33 mm

TECHNICAL FEATURES

OUTER UNIT (CONDANSER)		COMPRESSOR		INNER UNIT (EVAPORATOR)	
MODEL CODE	EWEREST 30-100	BRAND	BİTZER	MODEL CODE	TEA50 136 8
QUANTITY	1	MODEL	6GE-34Y	QUANTITY	2
FAN QUANTITY	6	POWER	34 HP	FAN QUANTITY	3
FAN DIA. Ø (mm)	500	TYPE	YARI HERMETİK	FAN DIA. Ø (mm)	500
CAPACITY (KW)	100	NOMINAL CURRENT (A.)		CAPACITY (KW)	17,98
SURFACE (m²)	257	DISCHARGE-SUCTION CONN.	7/8-2 1/8	SURFACE (m²)	67,06

LINE EQUIPMENTS	ECO	PLS
RECEIVER (GUVEN)	✓	✓
OIL SEPARATOR (GUVEN)	✓	✓
LIQUID ACCUMULATOR (GUVEN)	✓	✓
CAPILARY TUBES & MANOMETERS (T-COLD)	✗	✓
LP/HP SWITCH (REFNOX)	✓	✗
HP & COMBINE PRESSOSTAD (DANFOSS)	✗	✓
SIGHTGLASSES (DANFOSS)	✓	✓
SELENOID VALVE (DANFOSS)	✗	✓
DRAIR (DANFOSS / T-COLD)	✓	✓
ABSORBER (COLDTHERM)	✓	✓
DIGITAL CONTROLLER (DANFOSS / AKO / ELIWE)	✓	✓
ELECTRICAL EQUIPMENTS (SCHNEIDER)	✓	✓
FANS (ZEIHL-ABAGG, ROSENBERG, EBM)	✗	✓

DIAGRAM OF EQUIPMENTS HAS BEEN PRESENTED VISUALLY.



CONDITIONS OF COMPRESSOR CAPACITY

TO / TC (°C)	-18/+40	-18/+45	-18/+50	-25/+40	-25/+45	-25/+50	-31/+40	-31/+45	-31/+50
COOLING CAPACITY (kW)	52,90	48,30	43,60	38,90	35,40	31,80	29,10	26,40	23,60
POWER CUMSUPTION (kW)	24,60	25,80	26,80	21,10	21,80	22,40	17,95	18,39	18,72
COP (w/w)	2,15	1,87	1,63	1,85	1,62	1,42	1,62	1,43	1,26