



DIL-WASH AÇIK EN KONTİNÜ KUMAŞ YIKAMA ve KASAR MAKİNESİ

DIL-WASH OPEN WIDTH CONTINUE
WASHING and BLEACHING MACHINE

DMS/24



DİLMENLER MAKİNE SANAYİ

Dilmenler, Türkiye, İstanbul'da 1982 yılında kurulan DMS Dilmenler Makine Tekstil San. Tic. A.Ş. 46.000 m² kapalı üretim sahasında 320 kişilik kalifiye ekibi ile Tekstil Boyama ve Terbiye Makineleri alanında üretim yapmaktadır.

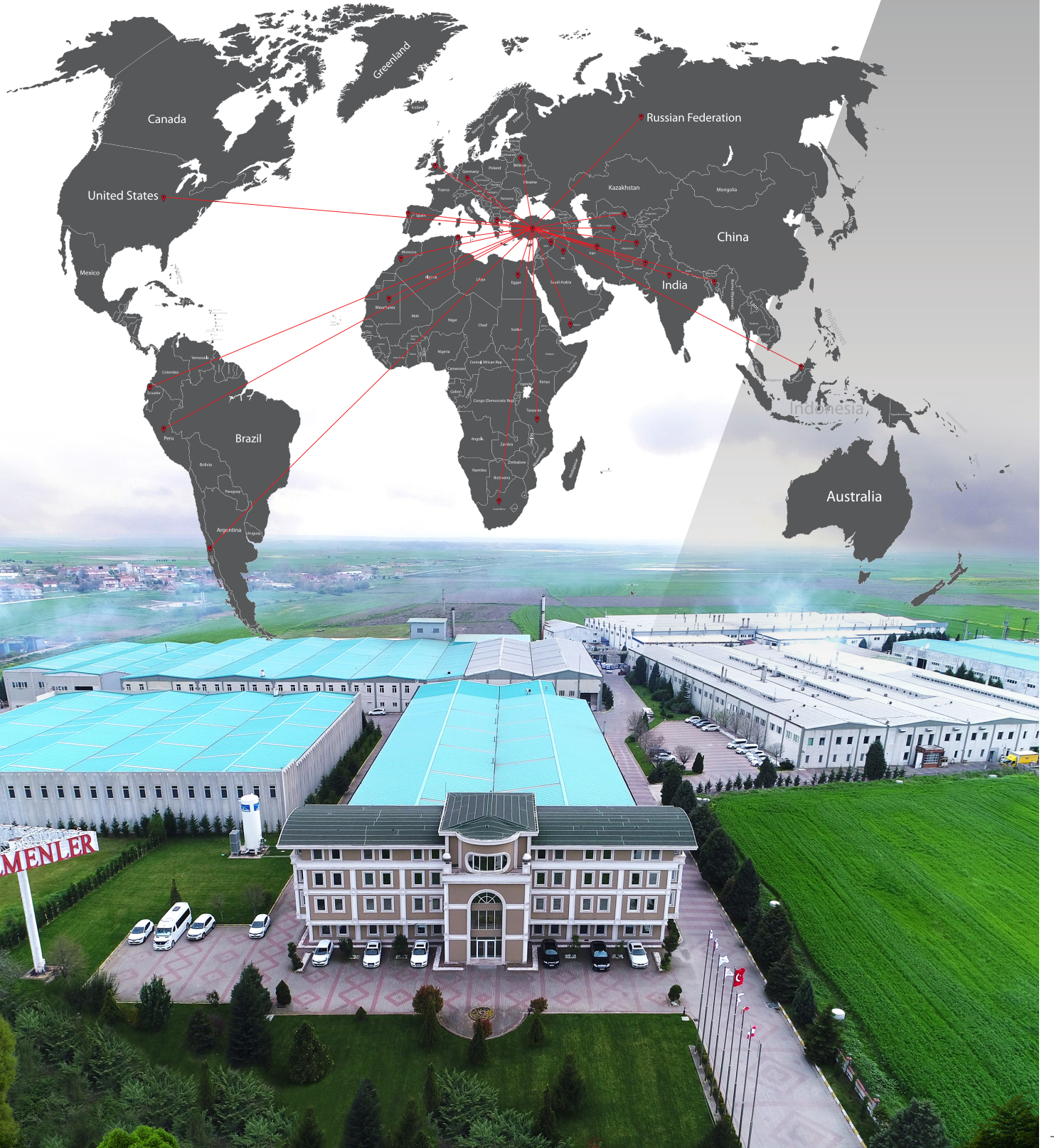
Dilmenler has been established in 1982 and continues to manufacture Textile Dyeing and Finishing Machinery with a closed area of 46.000 m² and a qualified staff of 320 people.

SERTİFİKALARIMIZ

ISO 9001: 2015 Kalite Yönetim Sistemi,
EN ISO 3834-2 Metalik malzemelerin ergitme
kaynağı için kalite şartları,
97/23/EC Basıncılı Ekipmanlar Direktifi.

CERTIFICATIONS

ISO 9001: Quality Management System,
EN ISO 3834-2 Quality Conditions for
welding metallic equipments.
97/23/EC Pressure Equipment Directive.





DIL-WASH AÇIK EN KONTİNÜ KUMAŞ YIKAMA VE KASAR MAKİNESİ

Her türlü doğal ve sentetik, elyaf ve karışımlarından üretilmiş açık en örgü ve dokuma kumaşların ön işlem, ve boya (baskı, jet boya ve CPB) sonrası yıkama proseslerini hızlı, ekonomik ve yüksek ürün kalitesi ile gerçekleştiren ileri teknoloji ile donatılmış bir kontinü proses makinesidir.

EN 13445 ve PED 97/23/EG standardına göre üretilmiştir.

EN 10028-7 malzeme normuna uygun EN 10204 3.1 sertifikalı östenitik 1.4404 paslanmaz çelikten imal edilmiştir.

Dizayn sıcaklığı: 100 °C

AVANTAJLARI:

- › Yüksek Ürün Kalitesi
- › Düşük Su/Buhar/Elektrik Tüketimi
- › Proses Tekrarlanabilirliği
- › Kırıksız ve Tüysüz Kumaş Yüzey Kalitesi
- › Kasarda Yüksek Beyazlık Değerleri
- › Düşük İşletme Maliyetleri
- › Düşük Kimyasal Tüketimi
- › Düşük Çekmezlik Değerleri
- › Kumaşta Yüksek Hidrofilite ve İyi Kasar Sonucu

DIL-WASH OPEN WIDTH CONTINUE WASHING AND BLEACHING MACHINE

Is equipped with high technology, serves to sector economical and high productive machines in processing both knitted and woven fabrics in bleaching, washing after dyeing (printing, jet dyeing and CPB) which produced from natural or synthetic fiber and it's compounds.

Manufactured according to EN 13445 and PED 97/23/EG.

Austenitic stainless steel 1.4404 according to EN 10028-7 suitable for material norms EN 10204 3.1 certificate.

Design Temperature: 100 °C

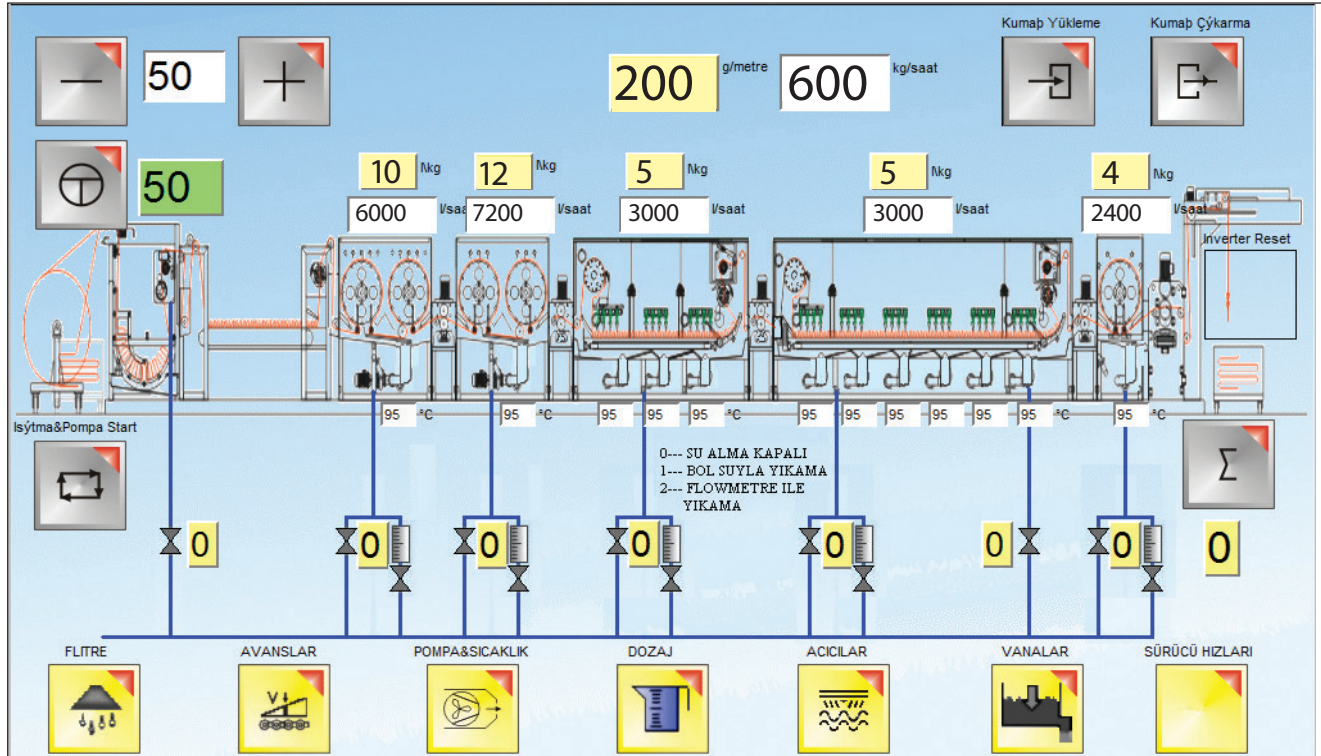
ADVANTAGES:

- › High product Quality
- › Low Water/Steam/Electricity consumptions.
- › No Hairyess/pilling of fabric surface
- › High Degree of Whiteness
- › High Hydrophility and good bleaching result on fabric
- › Low Process Cost
- › Low Chemical Consumption
- › Reproducibility
- › Low shrinkage values

DİL-WASH AÇIK EN KONTİNÜ KUMAŞ YIKAMA MAKİNESİ

DIL-WASH OPEN WIDTH CONTINUE WASHING MACHINE

DMS 24



Process : Washing after reactive/acid/dispers printing for knitted fabrics

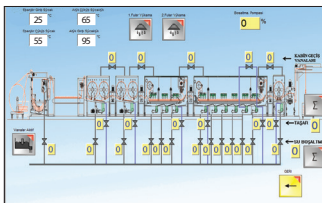
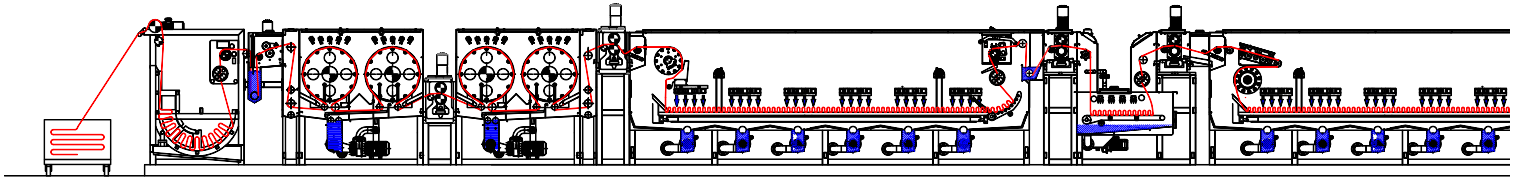
Production Capacity : up to 500kg/h

Running Speed : up to 35 m/min.

Water Consumption : 8 - 50 liter/kg fabric

Steam Consumption : 0,6 - 1,5 kg steam/kg fabric (6 bar g)

Electric Consumption : 0,09 kW/kg fabric

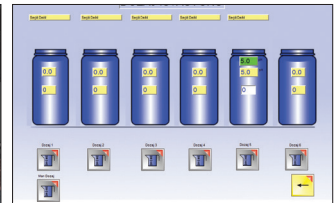
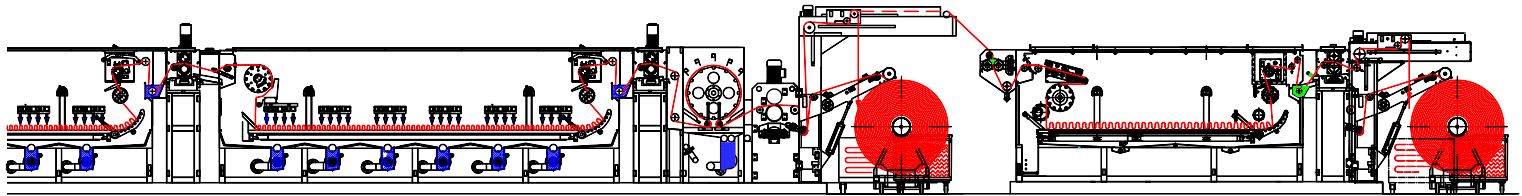


DIL-WASH AÇIK EN KONTİNÜ KUMAŞ YIKAMA MAKİNESİ
DIL-WASH OPEN WIDTH CONTINUE WASHING MACHINE

DMS 24

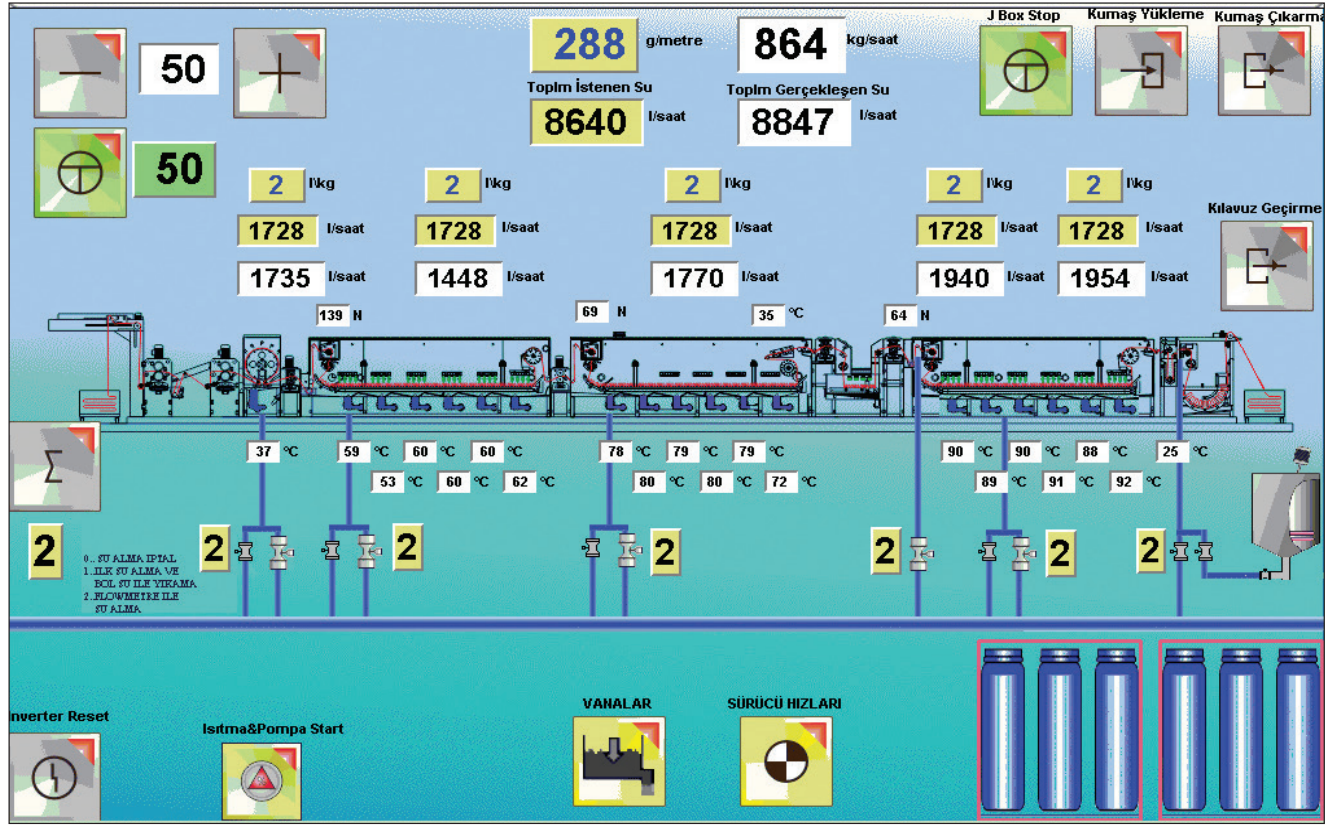


- Process** : **Washing after rope form discontinue reactive/ acid/dispers dyeing for knitted fabrics**
- Production Capacity** : up to 900kg/h
- Running Speed** : up to 50 m/min.
- Water Consumption** : 6 -20 liter/kg fabric
- Steam Consumption** : 0,37 - 1,2 kg steam/kg fabric (6 bar g)
- Electric Consumption** : 0,05 kW/kg fabric



DİL-WASH AÇIK EN KONTİNÜ KUMAŞ YIKAMA ve KASAR MAKİNESİ DİL-WASH OPEN WIDTH CONTINUE WASHING and BLEACHING MACHINE

DMS 24



Process : Washing after reactive/acid/dispers printing for knitted fabrics

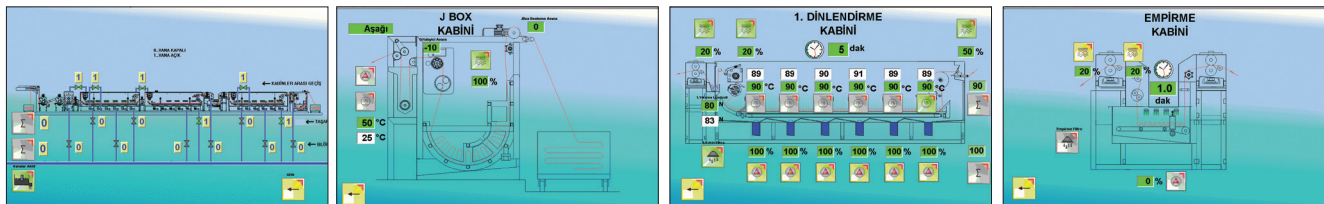
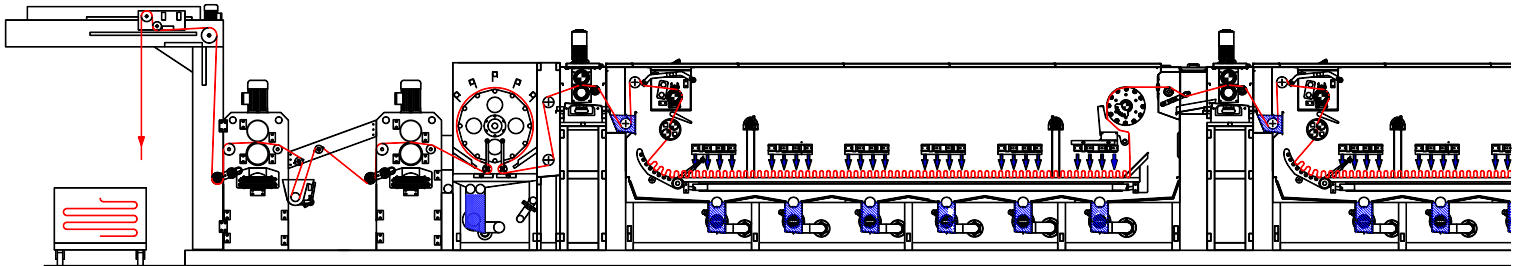
Production Capacity : up to 1200kg/h

Running Speed : up to 80 m/min.

Water Consumption : 6 -40 liter/kg fabric

Steam Consumption : 0,5 - 1,2 kg steam/kg fabric (6 bar g)

Electric Consumption : 0,06 kW/kg fabric



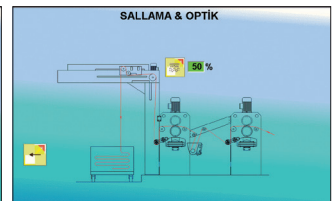
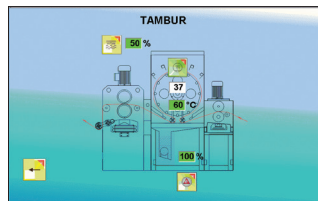
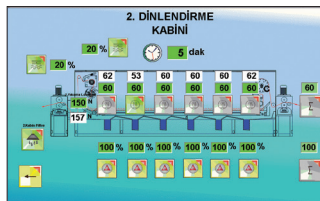
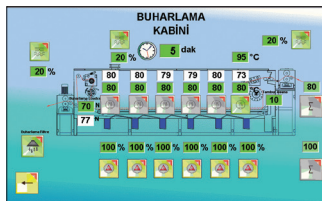
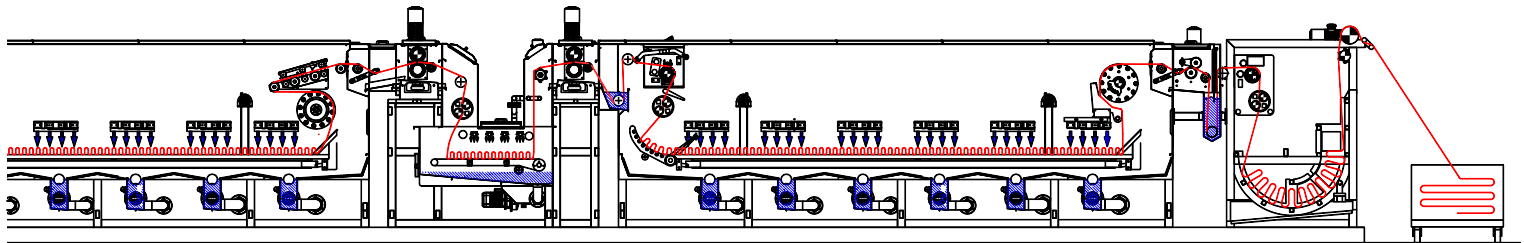
DİL-WASH AÇIK EN KONTİNÜ KUMAŞ YIKAMA ve KASAR MAKİNESİ
DIL-WASH OPEN WIDTH CONTINUE WASHING and BLEACHING MACHINE

DMS 24



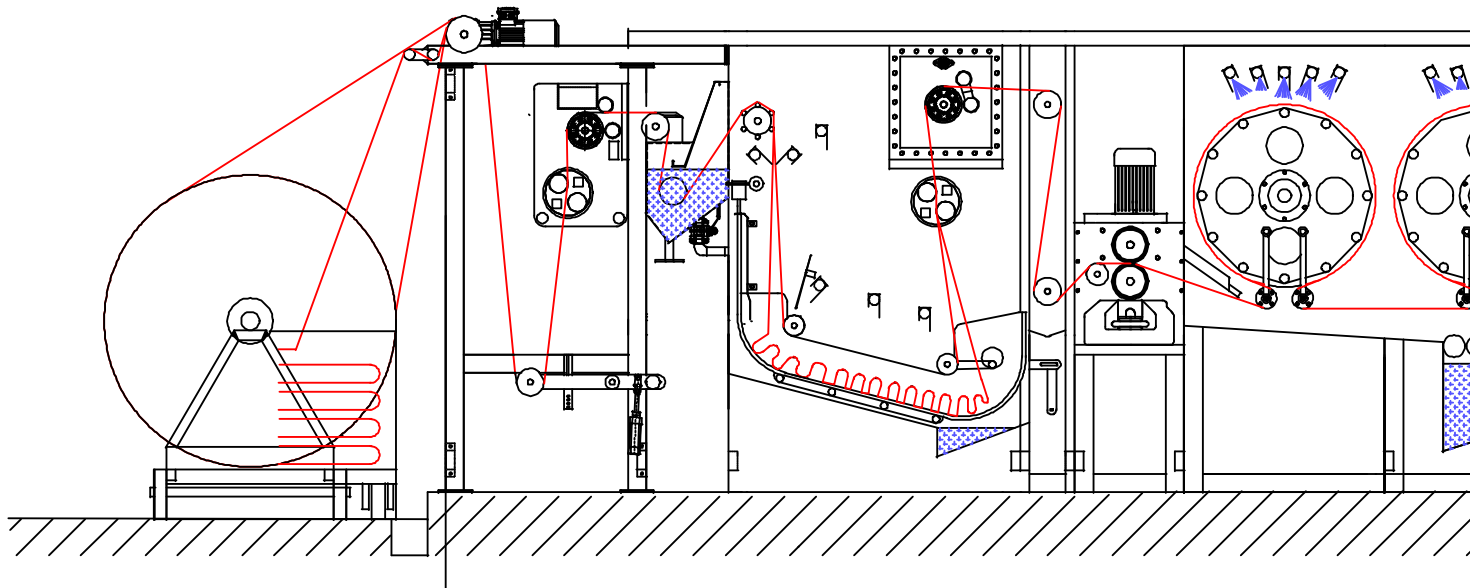
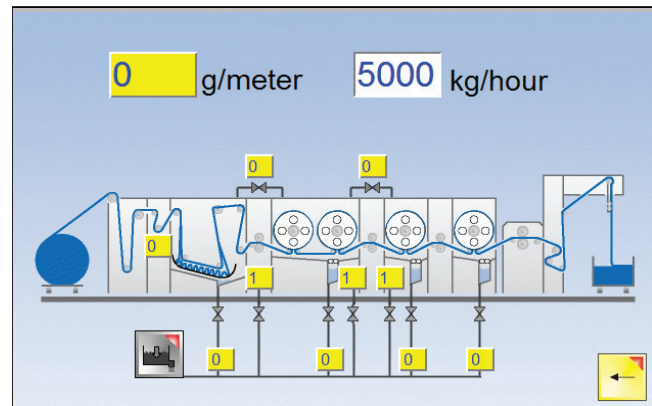
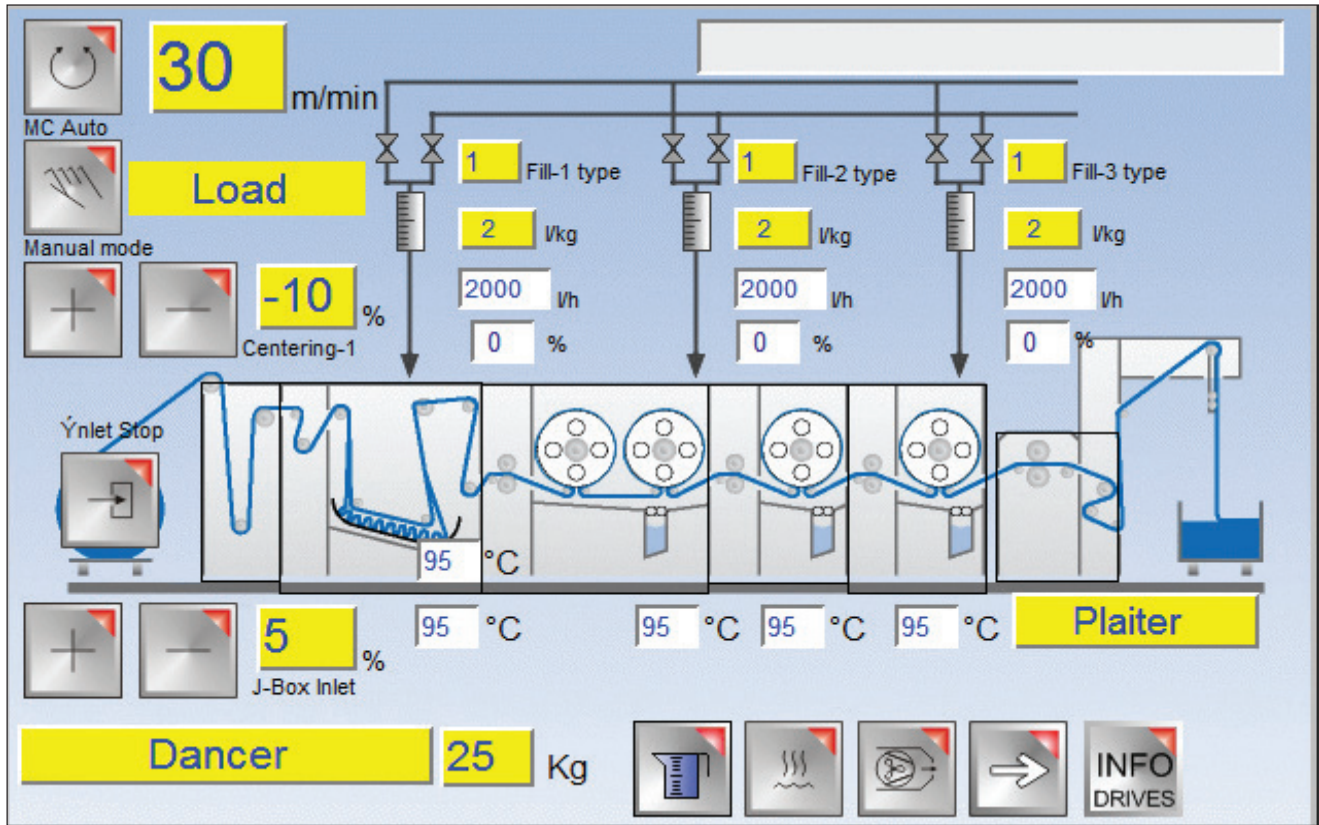
Process : **Washing after rope form discontinue reactive/ acid/dispers dyeing for knitted fabrics**
 Production Capacity : up to 1800kg/h
 Running Speed : up to 80 m/min.
 Water Consumption : 6 -13 liter/kg fabric
 Steam Consumption : 0,37 - 0,8 kg steam/kg fabric (6 bar g)
 Electric Consumption : 0,04 kW/kg fabric

Process : **Bleaching for knitted fabrics**
 Production Capacity : up to 1000kg/h
 Running Speed : up to 80 m/min.
 Water Consumption : 6 -13 liter/kg fabric
 Steam Consumption : 0,37 - 0,8 kg steam/kg fabric (6 bar g)
 Electric Consumption : 0,065 kW/kg fabric



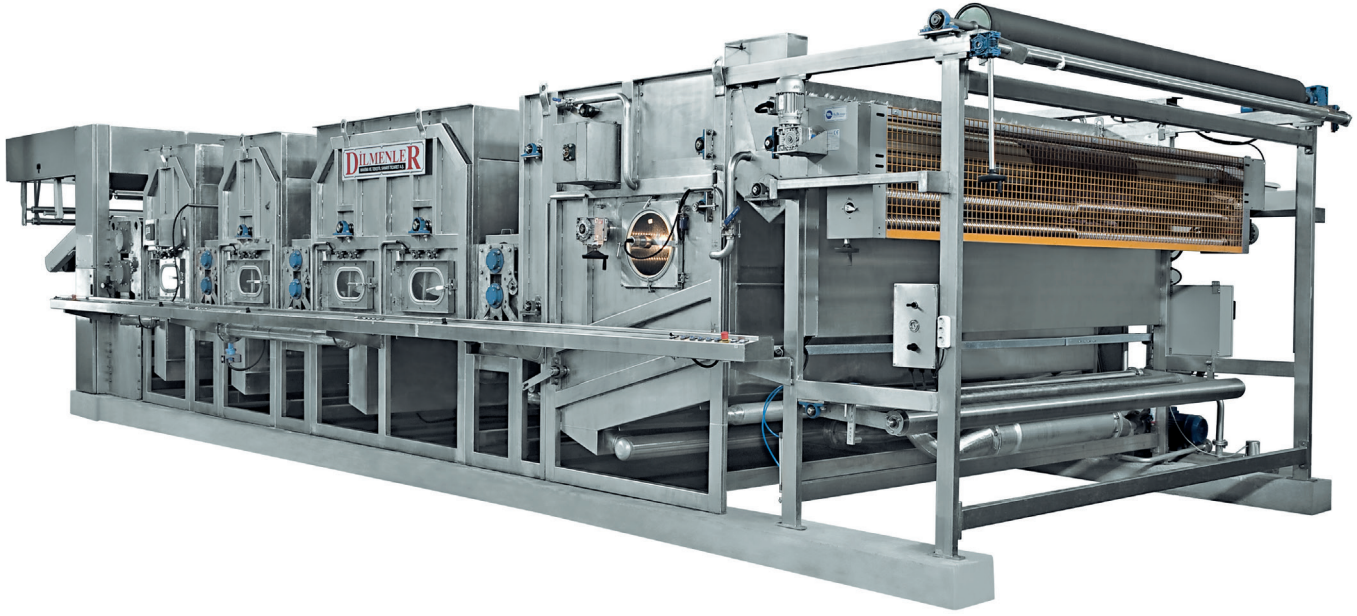
DIL-PRE WASH AÇIK EN KUMAŞ ÖN YIKAMA MAKİNESİ
 DIL-PRE WASH OPEN WIDTH FABRIC PRE-WASHING MACHINE

DMS 24



DIL-PRE WASH AÇIK EN KUMAŞ ÖN YIKAMA MAKİNESİ
DIL-PRE WASH OPEN WIDTH FABRIC PRE-WASHING MACHINE

DMS 24

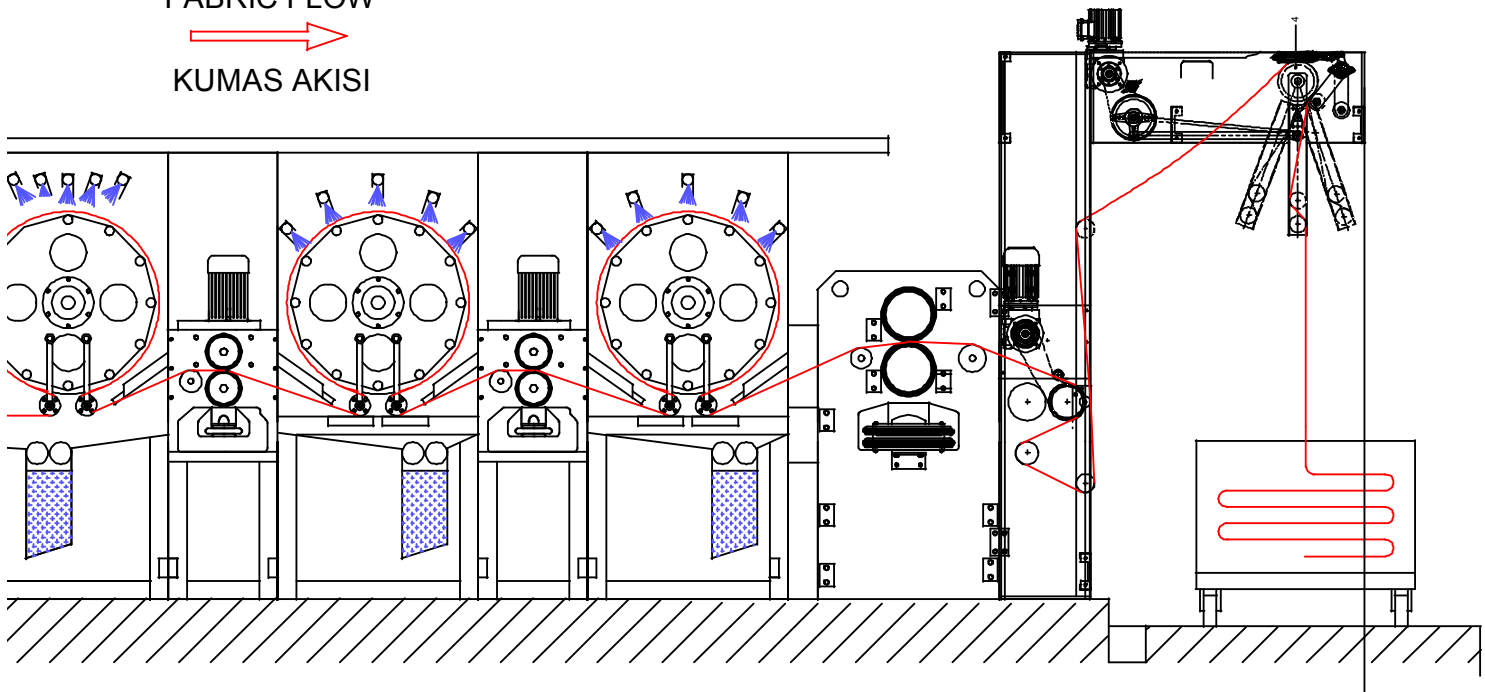


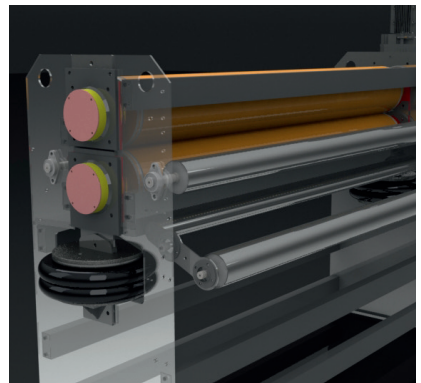
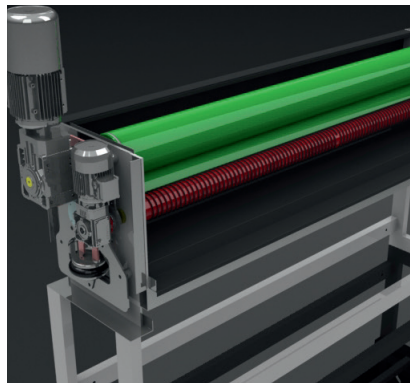
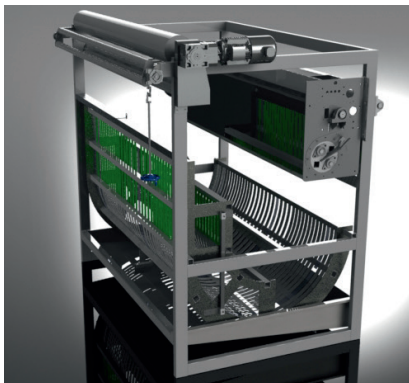
- Process** : Preparation washing range for nylon/lycra warp-knitted fabrics
- Production Capacity : up to 700kg/h
- Running Speed : up to 25 m/min.
- Water Consumption : 5 - 10 liter/kg fabric
- Steam Consumption : 0,04 - 0,85 kg steam/kg fabric (6 bar g)
- Electric Consumption : 0,05 kW/kg fabric

FABRİK FLOW



KUMAS AKISI





İHTİYAÇLARINIZI
BİLİYORUZ
SİZİN İÇİN
ÜRETİYORUZ

DMS DİLMENLER MAKİNE VE TEKSTİL SAN. TİC. A.Ş.

Merkez / Head Office

Ataköy 7-8-9-10. Kısım Mh. Çobançeşme E5 yanyol
Avrupa Konutları Ofis A Blok Kat:11 Bakırköy / İstanbul
Phone : +90 212 551 18 27
Fax : +90 212 551 11 62

Fabrika / Factory

Ergene 1 OSB Vakıflar Mh. E5 Yolu Üzeri Fabrikalar Sk. No:11 Ergene / Tekirdağ / Türkiye
Phone : +90 282 672 25 07
Fax : +90 282 672 22 63
info@dilmenler.com.tr | www.dilmenler.com.tr



REF ID 0321 Ver01

WE KNOW
YOUR NEEDS
AND PRODUCE
FOR YOU