

 **FRESHWELD®**

CATALOGUE



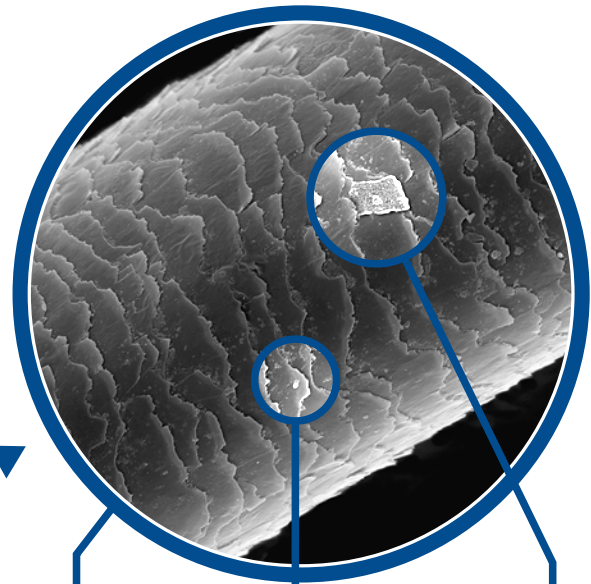
A global brand that supports all the workers in the industry work in a healthy environment and provides solution for all facilities whose air will be cleaned in the World

The right choice of professional solutions, **FRESHWELD** products are produced by an expert production team of 30 people in production facilities located on a closed area of 16,000 m².

We develop the most accurate solutions in the fields of air suction, filtering and ventilation, which are indispensable for our business partners with our wide product segment and high quality production philosophy that gives importance to details.

PARTICLES

Due to the increasing air pollution in our world, the effect of particles on human health has begun to be studied more comprehensively. As a result, it has emerged that fine dust creates a serious health hazard, causing respiratory diseases and cancer, and has become the agenda.



Source: wiki.com

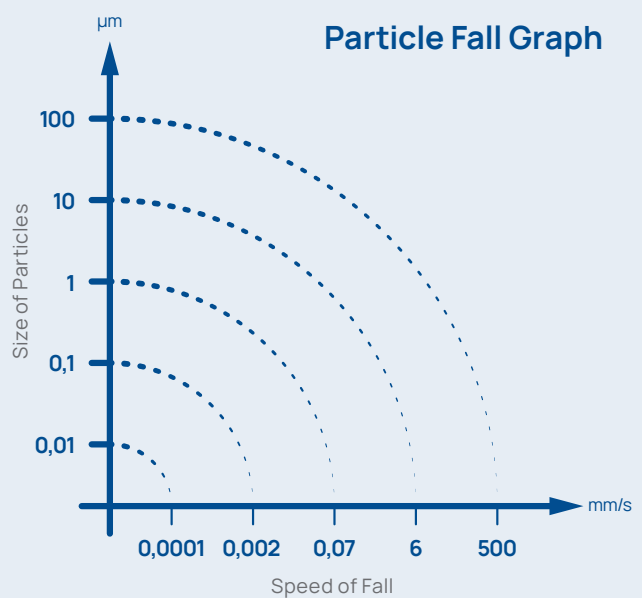
Human Hair
75 μm ~ 150 μm

Particles
5 μm ~ 10 μm

Particles
Smaller than 1 μm

Particles larger than 10 μm in the atmosphere precipitate very quickly and can only hang in the air near their source and with strong winds.

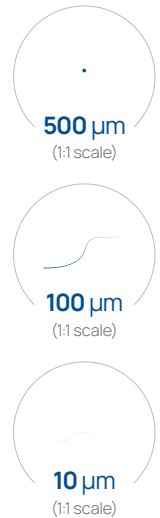
In a room without air flow, the falling rates of the particles occur as in the graph.



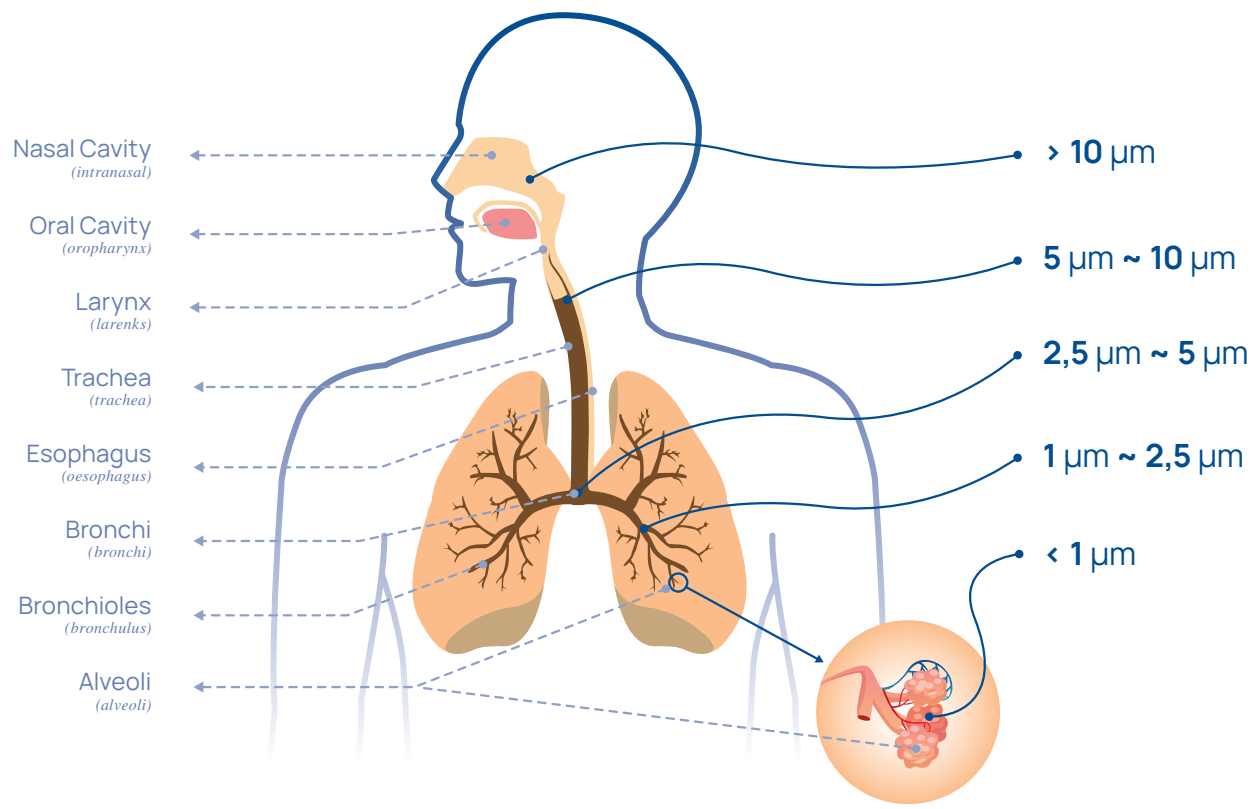
Dimensions of Smoke and Dust Generated in the Industry

Most particles larger than **10 µm** in diameter are visible to the naked eye with the appropriate angle of light and contrast. Under normal conditions, our eyes can see particles of **30 µm** and above.

- The first image on the graph is approximately **500 µm**
- The thickness of human hair is **100 µm**
- The smallest particle that can be seen by naked eye **>10 µm**
- Particles harmful to human health **<5 µm**
- Coarse dusts generated from industrial applications **>10 µm**
- Fine dusts generated from industrial applications **<10 µm**
- Welding fume **<1 µm** (0,2 – 0,8 µm)



i 1 µm = 1/1000mm

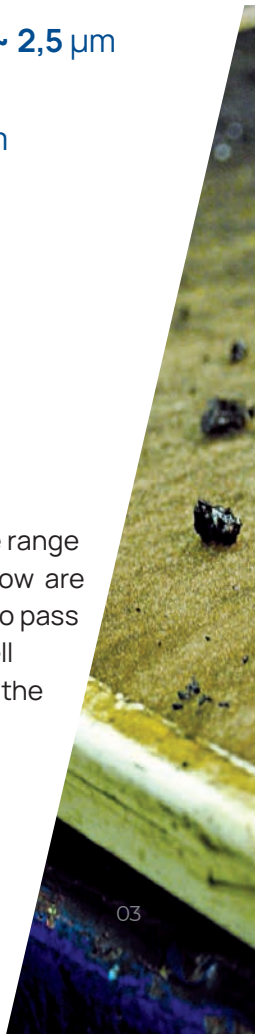


5 µm ~ 10 µm
Larger particles in the 5 µm-10 µm range are separated and retained by the upper respiratory tract. From here, it is quickly swallowed or easily expelled by coughing.

2,5 µm ~ 5 µm
Particles in the range of 2.5 µm-5 µm are most likely to be retained in human lungs and are sent back to the upper respiratory system without going deep into the lungs.

1 µm ~ 2,5 µm
Particles in the range of 1 µm-2.5 µm are retained in the bronchi and cause risks to human health.

1 µm
Particles in the range of 1 µm and below are small enough to pass through the cell membranes of the alveoli and mix into the blood stream.



Why **ISO16890** standard is needed instead of **EN779**

According to the **EN779:2012** standard, a synthetic dust known as ASHRAE is used for efficiency test of an air filter.

The test is performed by loading the filter with this dust in the laboratory environment and the evaluation is made by calculating the efficiency value of only **0.4 µm** particle size.

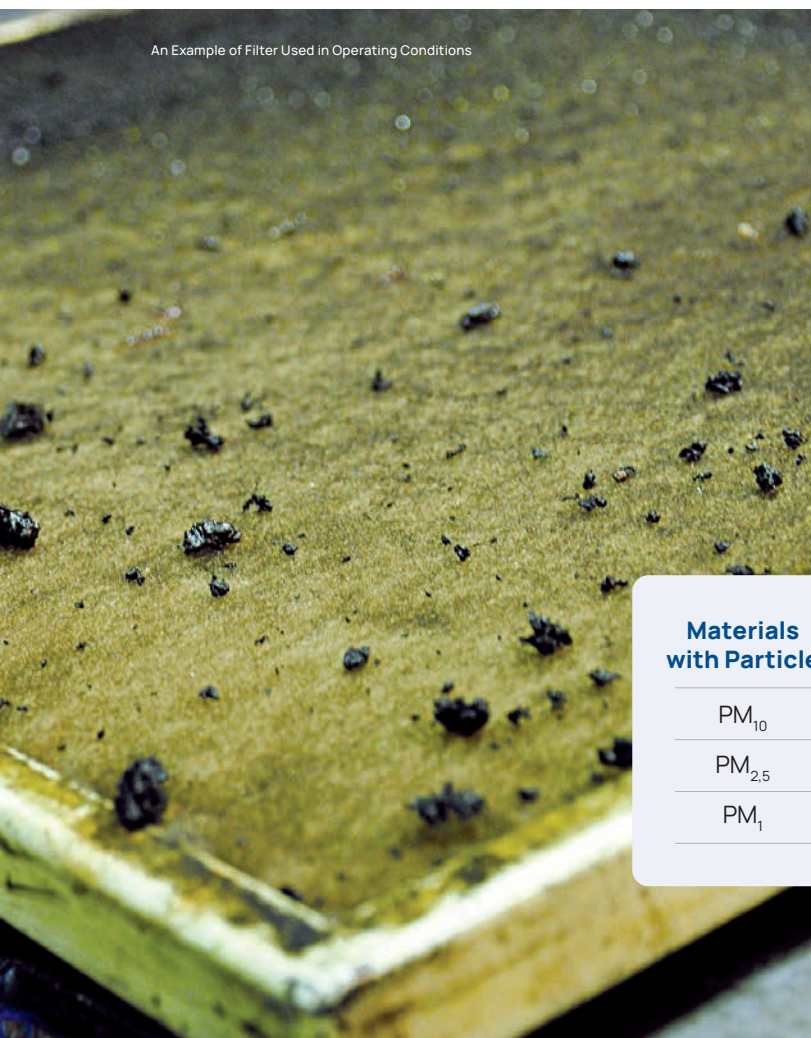


Filter Test Laboratory. Source: www.apcfilters.com



ASHRAE Test Dust. Source: testdust.dmt-group.com

An Example of Filter Used in Operating Conditions



In operating conditions, filters are exposed to pollutants in a different particle size range. Therefore, these values obtained in the laboratory environment are insufficient to determine the performance of an air filter.

For that reason, with **ISO16890** standard, filter users will have the opportunity to choose the filter much more precisely suitable for their needs.

Materials with Particle	Size Range
PM ₁₀	≤ 10 µm
PM _{2,5}	≤ 2,5 µm
PM ₁	≤ 1 µm

The **ISO16890** standard, unlike the EN779 standard, calculates the particle size in the range of **0.3 µm -10 µm** for efficiency evaluation.

(Particulate Matter = PM)

FILTER SELECTION CHART

	Particle Size	EN 779	Average Efficiency	ISO 16890
PRE Filters	> 10 µm	G2	65 ≤ Am < 80	Coarse 40%
	3 ~ 10 µm	G3	80 ≤ Am < 90	Coarse 50%
		G4	90 ≤ Am	Coarse 70%

	Particle Size	EN 779	Average Efficiency	ISO 16890		
				ePM ₁	ePM _{2,5}	ePM ₁₀
SENSITIVE Filters	1 ~ 3 µm	M5	40 ≤ Em < 60	5% ~ 35%	10% ~ 45%	40% ~ 70%
		M6	60 ≤ Em < 80	10% ~ 40%	20% ~ 50%	60% ~ 80%
	0,3 ~ 1 µm	F7	80 ≤ Em < 90	40% ~ 65%	65% ~ 75%	80% ~ 90%
		F8	90 ≤ Em < 95	65% ~ 90%	75% ~ 95%	90% → 95%
		F9	95 ≤ Em	80% ~ 90%	85% ~ 95%	90% → 95%

	Particle Size	Average Efficiency	EN 1822	Average Efficiency
EPA Filters		Ë % @ 0,3 µm		Ë % @ MPPS
	0,3 ~ 1 µm	≤ 95	E 10	≤ 85
	< 0,3 µm	≤ 98	E 11	≤ 95
		≤ 99,99	E 12	≤ 99,5

	Particle Size	Average Efficiency	EN 1822	Average Efficiency
HEPA Filters	< 0,3 µm	Ë % @ 0,3 µm		Ë % @ MPPS
		≤ 99,997	H 13	≤ 99,95
		≤ 99,999	H 14	≤ 99,995

	Particle Size	Average Efficiency	EN 1822	Average Efficiency
ULPA Filters	0,2 ~ 0,1 µm	Ë % @ 0,12 µm		
		≤ 99,9995	U 15	≤ 99,9995
		≤ 99,99995	U 16	≤ 99,99995
		≤ 99,999995	U 17	≤ 99,999995



PRODUCT SELECTION CHART

MOBILE	Mobile Filters That Are Advised For Welding Application	M1	M2	M3
	Unalloyed & Low-alloyed steel (Nickel and Chromium additive < %30)	☑	☑	☑
	High Alloyed Steel (Nickel and Chromium additive > %30)	✗	✗	☑
STATIONARY	Stationary Filters That are Advised for Welding Application		SM	SMK
	Unalloyed & Low-alloyed steel (Nickel and Chromium additive < %30)		☑	☑
	High Alloyed Steel (Nickel and Chromium additive > %30)		✗	☑
TABLE	Downdraft Tables That are Advised for Welding Application		KMF	KTF
	Unalloyed & Low-alloyed steel (Nickel and Chromium additive < %30)		☑	☑
	High Alloyed Steel (Nickel and Chromium additive > %30)		✗	☑
HIGH VACUUM	High Vacuum Units That are Advised for Welding Application		TORFIL/125	TORFIL/500
	Corner Weld		☑	☑
	Butt Weld		✗	✗
ROBOTIC	Units that are Advised for Robotic Welding Applications	SMK/920	i8	TORFIL/500
	Fume Extraction from Closed Cabin	☑	☑	✗
	Fume Extraction from Torch	✗	✗	☑
	Fume Extraction with Hood	✗	☑	✗
DUST COLLECTION	Dust Collection	M3 JetPulse	KTF JetPulse	PULSATRON
	ISO ePM ₁	☑	☑	☑
	ISO ePM _{2,5}	✗	☑	☑
	ISO ePM ₁₀	✗	✗	☑
OILMIST	Oil Mist / Smoke	CLEANMIST	MIST COMPACT	MCOS
	Coolants Coolant oil and Water Emulsion	☑	☑	☑
	Cutting and Petroleum Oil 100%	✗	✗	☑
AMBIENT VENTILATION	Units that are advised for the ventilation of Big Workshops		PULSATRON	NOVUS
	Push&Pull Central Type Mixed Ventilation		☑	✗
	Central Type Displacement Ventilation		☑	✗
	Fully Automatic Displacement Ventilation		✗	☑



- M1/1100 MobilEco 8
- M2/2100 10
- M2/2200 12
- M3/2100 14
- M3/2200 16

MOBILE Units

- Filter Options 18

- SM/910 20
- SM/920 22
- SMK/910 24
- SMK/920 26

STATIONARY Units

- KMF Series 28
- KTM Series 30
- Visor Sizes 32
- KTF Series 34

TABLES

- i8 Hood Series 36

ROBOT Hood

- TORFIL/125 38
- TORFIL/500 40

HIGH Vacuum

- TSF Series 42
- MDT Series 44
- TSA Series 46

**FANS
ACROBAT ARMS**

- KP Serie 48
- MP Serie 50

PROTECTION Units

- Pulsatron Compact 52
- Clean Mist 54
- MCOS 56
- Mist Compact 58

These products only available in Turkey Market

- Filter Towers 60

These products only available in Turkey Market



This catalog has been designed and prepared for publication within FRESHWELD. There may be changes in the color and features of the products presented in the catalog. Copying and/or using the catalog content as a reference is not allowed. All rights reserved. © 2022

M1/1100



Mobile Unit
Lockable Wheels



2m Single Acrobat Arm
MobilEco



Disposable Cassette Filter
ePM₁ 80% (F9)

Specifications

- Low energy consumption, high performance
- Movable thanks to its wheeled structure
- Minimizing the loss of worktime by carrying out the maintenance only during filter change time thanks to the filter indicator buttons
- Minimizing the risk of fire related to the sparks thanks to its washable aluminium mesh pre filter
- Easy to use on welding process thanks to its 2 meter extraction arm connection
- Possible to add alternative filter options without changing the current body
- 2,7m feeding cable

Usage Areas

- Suitable for filtering fume occurred during welding process
- Suitable for laser marking and processing machines
- Suitable for processing unalloyed and low-alloy steel
- Suitable for filtering low level of fume

General Information

Filter Information

Filter Method	2 stages filtration
Filter Type	Disposable Cassette Filter
Filtration Surface Area	9 m ²
1 st stage	Mesh Spark Arrestor
2 nd stage	ePM ₁ 80% (F9)

Spare Filter Order Code

ePM ₁ 80% (F9)	1202F9AF01
---------------------------	------------

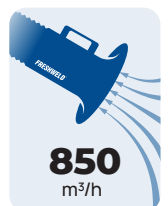
Product Order Code

Main unit without arm	111M221000
Unit with 2m arm	111M221002

Technical Information

Device Information

Dimensions (W x D x H)	480 x 480 x 820 mm
Weight (without arm)	49 kg
Arm Diameter	Ø152mm
Motor Power	575 watt
Supply Voltage	1x230V/50Hz
Noise Level	65 dB
Maximum Pressure	1200 Pa
Extraction Capacity	850 m ³ /h





MobilEco



M2/2100



Mobile Unit
Lockable Wheels



Single Acrobat Arm
Length Options



Disposable Cassette Filter
ePM₁ 65% (F8)

Specifications

- Movable thanks to its wheeled structure
- Reachable to desired area thanks to its flexible arm structure
- Fully complies with European Machinery Safety Regulation
- Minimizing the loss of worktime by carrying out the maintenance only during filter change time thanks to the filter indicator buttons
- Minimizing the risk of fire related to the sparks thanks to its aluminium spark arrestor
- If the phase sequence is wrong or there is a missing phase, the device will not work and the motor will be protected from burning
- If the fan turns in the opposite direction, the warning lamp comes on.
- 3m feeding cable

Usage Areas

- Designed for filtering fume and fine dust occurred during welding process
- Suitable for processing unalloyed and low-alloy steel
- Suitable for filtering low and medium level of fume and dust

General Information

Filter Information

Filter Method	3 stages filtration
Filter Type	Disposable Cassette Filter
Filtration Surface Area	16m ²
1 st stage	Mesh Spark Arrestor
2 nd stage	Coarse 70% (G4 pre-filter)
3 rd stage	ePM ₁ 65% (F8)

Spare Filter Order Code

Coarse 70% (G4 pre-Filter)	1201G4OF01
ePM ₁ 65% (F8)	1202F8AF02

Product Order Code

Main unit without arm	111M221000
Unit with 2m arm	111M221002
Unit with 3m arm	111M221003
Unit with 4m arm	111M221004

Technical Information

Device Information

Dimensions (W x D x H)	650 x 750 x 1125 mm
Weight (without arm)	96 kg
Arm Diameter	Ø152mm
Motor Power	1,1 kW
Supply Voltage	3x400V/50Hz
Noise Level	72 dB
Maximum Pressure	2000 Pa
Extraction Capacity	1300m ³ /h





Length of the Arm :
Can be ordered as
2, 3 or 4 meters

Voltage Options
Please Ask



M2/2200



Mobile Unit
Lockable Wheels



Double Acrobat Arm
Length Options



Disposable Cassette Filter
ePM₁ 65% (F8)

Specifications

- Possible to use at 2 different welding sources at the same time thanks to the flexible arm structure
- Unused arm could be closed easily thanks to flow rate adjustable damper
- Fully complies with European Machinery Safety Regulation
- Minimizing the loss of worktime by carrying out the maintenance only during filter change time thanks to the filter indicator buttons
- Minimizing the risk of fire related to the sparks thanks to its aluminium spark arrestor
- If the phase sequence is wrong or there is a missing phase, the device will not work and the motor will be protected from burning
- If the fan turns in the opposite direction, the warning lamp comes on.
- 3m feeding cable

Usage Areas

- Designed for filtering fume and fine dust occurred during welding process
- Suitable for processing unalloyed and low-alloy steel
- Suitable for filtering low and medium level of fume and dust

General Information

Filter Information

Filter Method	3 stages filtration
Filter Type	Disposable Cassette Filter
Filtration Surface Area	16m ²
1 st stage	Mesh Spark Arrestor
2 nd stage	Coarse 70% (G4 pre-filter)
3 rd stage	ePM ₁ 65% (F8)

Spare Filter Order Code

Coarse 70% (G4 pre-Filter)	1201G4OF01
ePM ₁ 65% (F8)	1202F8AF02

Product Order Code

Main unit without arm	111M222000
Unit with 2m arm	111M222002
Unit with 3m arm	111M222003
Unit with 4m arm	111M222004

Technical Information

Device Information

Dimensions (W x D x H)	650 x 750 x 1125 mm
Weight (without arm)	99 kg
Arm Diameter	Ø152mm
Motor Power	1,5 kW
Supply Voltage	3x400V/50Hz
Noise Level	72 dB
Maximum Pressure	2200 Pa
Extraction Capacity	2 x 850m ³ /h





Length of the Arm :
Can be ordered as
2, 3 or 4 meters

Voltage Options
Please Ask



M3/2100



Mobile Unit
Lockable Wheels



Single Acrobat Arm
Length Options



Activated Carbon Filter
Odor and Gas Retention



HEPA Filter
High Efficiency Filtration



Jet-Pulse
Automatic Filter Cleaning

Specifications

- Movable thanks to its wheeled structure
- Reachable to desired area thanks to its flexible arm structure
- Fully complies with European Machinery Safety Regulation
- Minimizing the loss of worktime by carrying out the maintenance only during filter change time thanks to the filter indicator buttons
- Minimizing the risk of fire related to the sparks thanks to its aluminium spark arrestor
- If the phase sequence is wrong or there is a missing phase, the device will not work and the motor will be protected from burning
- If the fan turns in the opposite direction, the warning lamp comes on.
- 3m feeding cable

Usage Areas

- Designed for filtering fume and fine dust occurred during welding process
- Suitable for processing unalloyed and low-alloy steel
- Suitable for filtering low, medium or high level of fume and dust

General Information

Filter Information

Filter Method	
Filter Type	see: FILTERS
Filtration Surface Area	
1 st stage	
2 nd stage	see: FILTERS
3 rd stage	
4 th stage	

Spare Filter Order Code

For Alternatives	see: FILTERS
------------------	--------------

Product Order Code	Activated C.	HEPA Filter	Jet-Pulse
Main unit without arm	121M321000	122M321000	123M321000
Unit with 2m arm	121M321002	122M321002	123M321002
Unit with 3m arm	121M321003	122M321003	123M321003
Unit with 4m arm	121M321004	122M321004	123M321004

Technical Information

Device Information

Dimensions (W x D x H)	650 x 750 x 1285 mm
Weight (without arm)	115 kg
Arm Diameter	Ø152mm
Motor Power	1,5 kW
Supply Voltage	3x400V/50Hz
Noise Level	72 dB
Maximum Pressure	2200 Pa
Extraction Capacity	see: FILTERS



72
dB



1300
m³/h

FILTER INDICATOR

MAIN FILTER GOOD

MAIN FILTER CHANGE



Length of the Arm :
Can be ordered as
2, 3 or 4 meters

 **Voltage Options**
Please Ask



M3/2200



Mobile Unit
Lockable Wheels



Double Acrobat Arm
Length Options



Activated Carbon Filter
Odor and Gas Retention



HEPA Filter
High Efficiency Filtration



Jet-Pulse
Automatic Filter Cleaning

Specifications

- Movable thanks to its wheeled structure
- Reachable to desired area thanks to its flexible arm structure
- Fully complies with European Machinery Safety Regulation
- Minimizing the loss of worktime by carrying out the maintenance only during filter change time thanks to the filter indicator buttons
- Minimizing the risk of fire related to the sparks thanks to its aluminium spark arrestor
- If the phase sequence is wrong or there is a missing phase, the device will not work and the motor will be protected from burning
- If the fan turns in the opposite direction, the warning lamp comes on.
- 3m feeding cable

Usage Areas

- Designed for filtering fume and fine dust occurred during welding process
- Suitable for processing unalloyed and low-alloy steel
- Suitable for filtering low, medium or high level of fume and dust

General Information

Filter Information

Filter Method	
Filter Type	see: FILTERS
Filtration Surface Area	
1 st stage	
2 nd stage	see: FILTERS
3 rd stage	
4 th stage	

Spare Filter Order Code

For Alternatives	see: FILTERS
------------------	--------------

Product Order Code	Activated C.	HEPA Filter	Jet-Pulse
Main unit without arm	121M322000	122M322000	123M322000
Unit with 2m arm	121M322002	122M322002	123M322002
Unit with 3m arm	121M322003	122M322003	123M322003
Unit with 4m arm	121M322004	122M322004	123M322004

Technical Information

Device Information

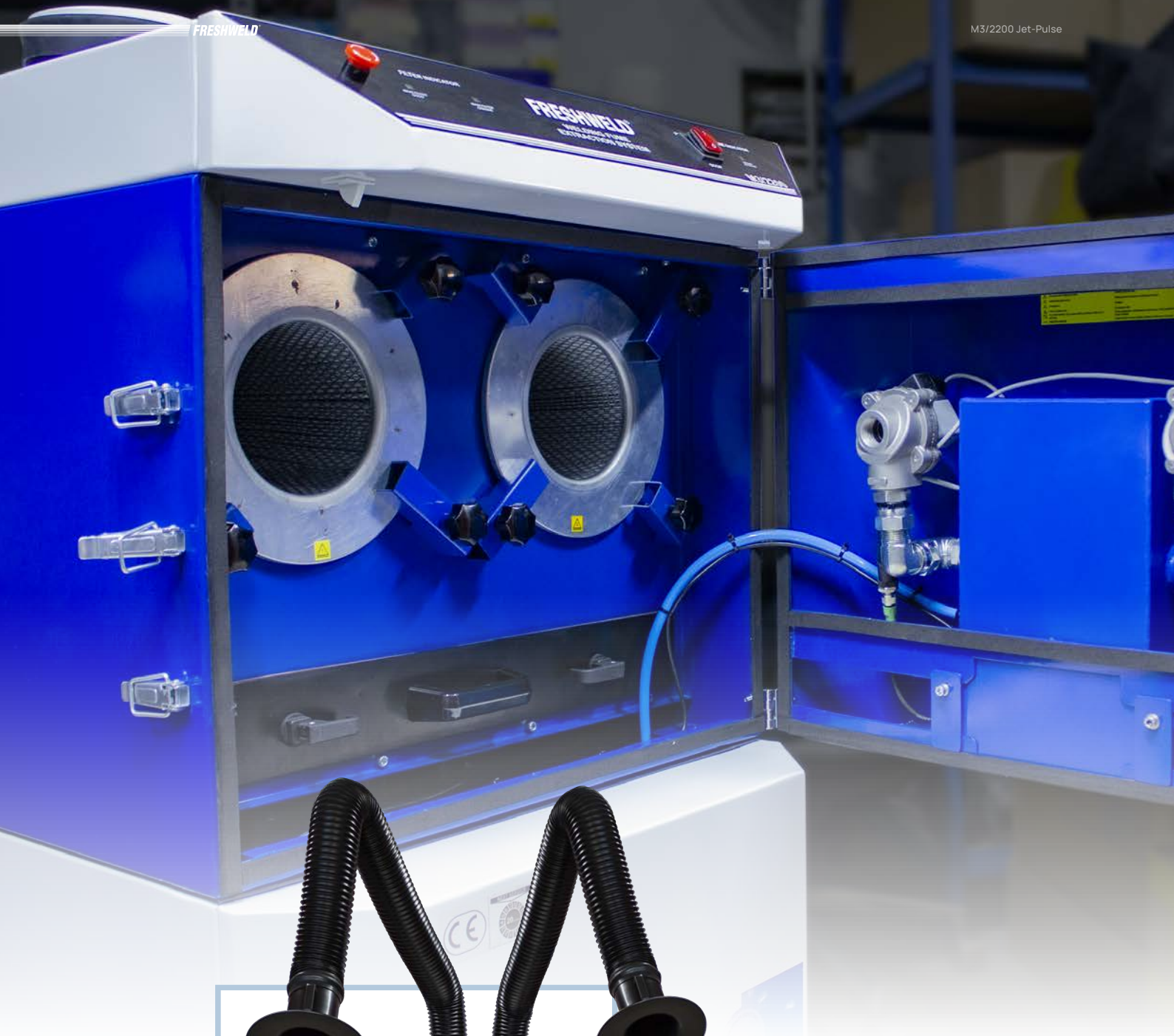
Dimensions (W x D x H)	650 x 750 x 1285 mm
Weight (without arm)	118 kg
Arm Diameter	Ø152mm
Motor Power	1,5 kW
Supply Voltage	3x400V/50Hz
Noise Level	72 dB
Maximum Pressure	2200 Pa
Extraction Capacity	see: FILTERS



72
dB



2x1000
m³/h



Length of the Arm :
Can be ordered as
2, 3 or 4 meters

Voltage Options
Please Ask



FILTERS

Filters for M3/2100 and M3/2200 Models



Activated Carbon Filter

The activated carbon filter captures and traps gas molecules. It prevents the passage of harmful gases. Activated carbon is a must for ventilation systems. There are many (even millions of) pores on the surface of the activated carbon filter. These pores capture harmful gases and odors and detain them inside.



HEPA Filter High Efficiency Filtration

HEPA Filters have 85% and above efficiency. They are the filters that can purify particles up to 0,3 microns in the ambient air. The ones with 99,97% efficiency are called True HEPA Filter while the ones with 99,99% efficiency are called ULPA Filter. A HEPA Filter's filter efficiency rate is 99,995%



Jet-Pulse Automatic Filter Cleaning

The system known as also Pulse Jet is the system that automatically cleans the filters with compressed air in the opposite direction as an alternative to the problems occurred during filter change. Waste materials released from the cleaned filters are collected in the waste drawer located under the units.





M3/2100

Filter Method	4 stages filtration
Filter Type	Disposable Cassette Filter
Filtration Surface Area	16m ²
1 st stage	Mesh Spark Arrestor
2 nd stage	Coarse 70% (G4 pre-filter)
3 rd stage	ePM ₁ 65% (F8)
4 th stage	Activated Carbon Filter

Extraction Capacity **1300m³/h**

Coarse 70% (G4 pre-filter)	1201G4OF01
ePM ₁ 65% (F8)	1202F8AF02
Granule Activated Carbon	1203AKKF01



M3/2200

Filter Method	4 stages filtration
Filter Type	Disposable Cassette Filter
Filtration Surface Area	16m ²
1 st stage	Mesh Spark Arrestor
2 nd stage	Coarse 70% (G4 pre-filter)
3 rd stage	ePM ₁ 65% (F8)
4 th stage	Activated Carbon Filter

Extraction Capacity **2 x 750m³/h**

Coarse 70% (G4 pre-filter)	1201G4OF01
ePM ₁ 65% (F8)	1202F8AF02
Granule Activated Carbon	1203AKKF01

Filter Method	4 stages filtration
Filter Type	Disposable Cassette Filter
Filtration Surface Area	27m ²
1 st stage	Mesh Spark Arrestor
2 nd stage	Coarse 70% (G4 pre-filter)
3 rd stage	ePM ₁ 65% (F8)
4 th stage	H13 HEPA Filter 11m ²

Extraction Capacity **1300m³/h**

Coarse 70% (G4 pre-filter)	1201G4OF01
ePM ₁ 65% (F8)	1202F8AF02
H13 HEPA Filter 11m ²	1202HPAF04

Filter Method	4 stages filtration
Filter Type	Disposable Cassette Filter
Filtration Surface Area	27m ²
1 st stage	Mesh Spark Arrestor
2 nd stage	Coarse 70% (G4 pre-filter)
3 rd stage	ePM ₁ 65% (F8)
4 th stage	H13 HEPA Filter 11m ²

Extraction Capacity **2 x 750m³/h**

Coarse 70% (G4 pre-filter)	1201G4OF01
ePM ₁ 65% (F8)	1202F8AF02
H13 HEPA Filter 11m ²	1202HPAF04

Filter Method	Automatic Cleanable
Filter Type	Jet-Pulse Cartridge Filter
Filtration Surface Area	2 x 10m ²
1 st stage	Mesh Spark Arrestor
2 nd stage	ePM ₁₀ 60% (M6) 2 x 10m ²
Compressed Air	5 - 6 bar

Extraction Capacity **1300m³/h**

ePM ₁₀ 60% (M6) 10m ²	1202M6AF05
---	------------

Filter Method	Automatic Cleanable
Filter Type	Jet-Pulse Cartridge Filter
Filtration Surface Area	2 x 10m ²
1 st stage	Mesh Spark Arrestor
2 nd stage	ePM ₁₀ 60% (M6) 2 x 10m ²
Compressed Air	5 - 6 bar

Extraction Capacity **2 x 1000m³/h**

ePM ₁₀ 60% (M6) 10m ²	1202M6AF05
---	------------

SM/910



Stationary Unit
Provides Space Advantage



Single Acrobat Arm
Length Options



Disposable Cassette Filter
ePM₁ 65% (F8)

Specifications

- Easy to use in workshops with limited spaces
- Reachable to desired area thanks to its flexible arm structure
- Fully complies with European Machinery Safety Regulation
- Minimizing the loss of worktime by carrying out the maintenance only during filter change time thanks to the filter indicator buttons
- Minimizing the risk of fire related to the sparks thanks to its aluminium spark arrestor
- If the phase sequence is wrong or there is a missing phase, the device will not work and the motor will be protected from burning
- If the fan turns in the opposite direction, the warning lamp comes on.
- Easy access thanks to external control panel

Usage Areas

- Designed for filtering fume and fine dust occurred during welding process
- Suitable for processing unalloyed and low-alloy steel welding
- Suitable for filtering low and medium level of fume and dust

General Information

Filter Information

Filter Method	3 stages filtration
Filter Type	Disposable Cassette Filter
Filtration Surface Area	16m ²
1 st stage	Mesh Spark Arrestor
2 nd stage	Coarse 70% (G4 pre-filter)
3 rd stage	ePM ₁ 65% (F8)

Spare Filter Order Code

Coarse 70% (G4 pre-Filter)	1201G4OF01
ePM ₁ 65% (F8)	1202F8AF02

Product Order Code

Main unit without arm	211SM91000
Unit with 2m arm	211SM91002
Unit with 3m arm	211SM91003
Unit with 4m arm	211SM91004

Technical Information

Device Information

Dimensions (W x D x H)	650 x 750 x 1125 mm
Weight (without arm)	96 kg
Arm Diameter	Ø152mm
Motor Power	1,1 kW
Supply Voltage	3x400V/50Hz
Noise Level	72 dB
Maximum Pressure	2000 Pa
Extraction Capacity	1300m ³ /h





Length of the Arm :
Can be ordered as
2, 3, 4, 5, 6 or 7
meters

Voltage Options
Please Ask



SM/920



Stationary Unit

Provides Space Advantage



Double Acrobat Arm

Length Options



Disposable Cassette Filter

ePM₁ 65% (F8)

Specifications

- Easy to use in workshops with limited spaces
- Reachable to desired area thanks to its flexible arm structure
- Fully complies with European Machinery Safety Regulation
- Minimizing the loss of worktime by carrying out the maintenance only during filter change time thanks to the filter indicator buttons
- Minimizing the risk of fire related to the sparks thanks to its aluminium spark arrestor
- If the phase sequence is wrong or there is a missing phase, the device will not work and the motor will be protected from burning
- If the fan turns in the opposite direction, the warning lamp comes on.
- Easy access thanks to external control panel

Usage Areas

- Designed for filtering fume and fine dust occurred during welding process
- Suitable for processing unalloyed and low-alloy steel welding
- Suitable for filtering low and medium level of fume and dust

General Information

Filter Information

Filter Method	3 stages filtration
Filter Type	Disposable Cassette Filter
Filtration Surface Area	16m ²
1 st stage	Mesh Spark Arrestor
2 nd stage	Coarse 70% (G4 pre-filter)
3 rd stage	ePM ₁ 65% (F8)

Spare Filter Order Code

Coarse 70% (G4 pre-Filter)	1201G4OF01
ePM ₁ 65% (F8)	1202F8AF02

Product Order Code

Main unit without arm	211SM92000
Unit with 2m arm	211SM92002
Unit with 3m arm	211SM92003
Unit with 4m arm	211SM92004

Technical Information

Device Information

Dimensions (W x D x H)	650 x 750 x 1125 mm
Weight (without arm)	99 kg
Arm Diameter	Ø152mm
Motor Power	1,5 kW
Supply Voltage	3x400V/50Hz
Noise Level	72 dB
Maximum Pressure	2200 Pa
Extraction Capacity	2x850 m ³ /h





Improved Control Panel

Length of the Arm :
Can be ordered as
2, 3, 4, 5, 6 or 7
meters

Voltage Options
Please Ask



SMK/910



Stationary Unit
Provides Space Advantage



Single Acrobat Arm
Length Options



Activated Carbon Filter
Odor and Gas Retention



HEPA Filter
High Efficiency Filtration

Specifications

- Easy to use in workshops which has limited spaces
- Reachable to desired area thanks to its flexible arm structure
- Fully complies with EU Machinery Safety Regulation
- Minimizing the loss of worktime by carrying out the maintenance only during filter change time thanks to the filter indicator buttons
- Minimizing the risk of fire related to the sparks thanks to its aluminium spark arrestor
- If the phase sequence is wrong or there is a missing phase, the device will not work and the motor will be protected from burning
- If the fan turns in the opposite direction, the warning lamp comes on.
- Easy access thanks to external control panel

Usage Areas (Activated Carbon Filter)

- Designed to filter fume, dust and vapour occurred during welding and chemical applications
- Suitable for unalloyed, low alloyed and high alloyed steel welding
- Suitable for filtering vapour occurred during light level of chemical applications
- Proper to use for suction of odor molecules as well

Usage Areas (HEPA Filter)

- Designed to filter fume occurred during welding applications of high alloy metals
- Suitable for unalloyed, low alloyed and high alloyed steel welding
- Suitable for filtering vapour occurred during light and medium level of fume and dust
- It is suitable for environments where Hepa filter is required to return the purified air to the same ambient

General Information

AC Filter

HEPA Filter

Filter Information

Filter Method	3 stages filtration	
Filter Type	Disposable Cassette Filter	
Filtration Surface Area	16m ²	27m ²
1 st stage	Mesh Spark Arrestor	
2 nd stage	Coarse 70% (G4 pre-filter)	
3 rd stage	ePM ₁ 65% (F8)	
4 th stage	Granule AC Filter	H13 HEPA Filter 11m ²

Spare Filter Order Code

Coarse 70% (G4 pre-Filter)	1201G4OF01	
ePM ₁ 65% (F8)	1202F8AF02	
Base Filter	1203AKKF01	1202HPAF04

Product Order Code

Main unit without arm	221SMK9100	222SMK9100
Unit with 2m arm	221SMK9102	222SMK9102
Unit with 3m arm	221SMK9103	222SMK9103
Unit with 4m arm	221SMK9104	222SMK9104

Technical Information

Device Information

Dimensions (W x D x H)	650 x 750 x 1285 mm
Weight (without arm)	131 kg
Arm Diameter	Ø152mm
Motor Power	1,5 kW
Supply Voltage	3x400V/50Hz
Noise Level	72 dB
Maximum Pressure	2200 Pa
Extraction Capacity	1300m ³ /h





Hanger Installation Example



Length of the Arm :
Can be ordered as
2, 3, 4, 5, 6 or 7
meters

Voltage Options
Please Ask



SMK/920



Stationary Unit
Provides Space Advantage



Double Acrobat Arm
Length Options



Activated Carbon Filter
Odor and Gas Retention



HEPA Filter
High Efficiency Filtration

Specifications

- Easy to use in workshops which has limited spaces
- Reachable to desired area thanks to its flexible arm structure
- Fully complies with EU Machinery Safety Regulation
- Minimizing the loss of worktime by carrying out the maintenance only during filter change time thanks to the filter indicator buttons
- Minimizing the risk of fire related to the sparks thanks to its aluminium spark arrestor
- If the phase sequence is wrong or there is a missing phase, the device will not work and the motor will be protected from burning
- If the fan turns in the opposite direction, the warning lamp comes on.
- Easy access thanks to external control panel

Usage Areas (Activated Carbon Filter)

- Designed to filter fume, dust and vapour occurred during welding and chemical applications
- Suitable for unalloyed, low alloyed and high alloyed steel welding
- Suitable for filtering vapour occurred during light level of chemical applications
- Proper to use for suction of odor molecules as well

Usage Areas (HEPA Filter)

- Designed to filter fume occurred during welding applications of high alloy metals
- Suitable for unalloyed, low alloyed and high alloyed steel welding
- Suitable for filtering vapour occurred during light and medium level of fume and dust
- It is suitable for environments where Hepa filter is required to return the purified air to the same ambient

General Information

AC Filter

HEPA Filter

Filter Information

Filter Method	3 stages filtration	
Filter Type	Disposable Cassette Filter	
Filtration Surface Area	16m ²	27m ²
1 st stage	Mesh Spark Arrestor	
2 nd stage	Coarse 70% (G4 pre-filter)	
3 rd stage	ePM ₁ 65% (F8)	
4 th stage	Granule AC Filter	H13 HEPA Filter 11m ²

Spare Filter Order Code

Coarse 70% (G4 pre-Filter)	1201G4OF01	
ePM ₁ 65% (F8)	1202F8AF02	
Base Filter	1203AKKF01	1202HPAF04

Product Order Code

Main unit without arm	221SMK9200	222SMK9200
Unit with 2m arm	221SMK9202	222SMK9202
Unit with 3m arm	221SMK9203	222SMK9203
Unit with 4m arm	221SMK9204	222SMK9204

Technical Information

Device Information

Dimensions (W x D x H)	650 x 750 x 1285 mm
Weight (without arm)	132 kg
Arm Diameter	Ø152mm
Motor Power	1,5 kW
Supply Voltage	3x400V/50Hz
Noise Level	72 dB
Maximum Pressure	2200 Pa
Extraction Capacity	2 x 750m ³ /h



FRESHWELD

FRESHWELD

SMK/920

FRESHWELD



Length of the Arm :
Can be ordered as
2, 3, 4, 5, 6 or 7
meters

Voltage Options
Please Ask



KMF Series



Welding Table

Downdraft Table, Size Options Available



Mobile Unit

Lockable Wheels



Disposable Cassette Filter

ePM₁ 65% (F8)

Specifications

- Movable thanks to its wheeled structure
- Fume and dust are extracted before reaching to operator's respiratory tract thanks to downdraft extraction
- Fully complies with European Machinery Safety Regulation
- Minimizing the loss of worktime by carrying out the maintenance only during filter change time thanks to the filter indicator buttons
- Minimizing the risk of fire related to the sparks thanks to its washable aluminium mesh pre filter
- If the phase sequence is wrong or there is a missing phase, the device will not work and the motor will be protected from burning
- If the fan turns in the opposite direction, the warning lamp comes on
- 3 m feeding cable

Usage Areas

- Designed for filtering fume occurred during welding applications
- Possible to use to prevent spreading fine dust occurred during grinding applications to the area
- Suitable for filtering low and medium level of fume

General Information

Filter Information

Filter Method	3 stages filtration
Filter Type	Disposable Cassette Filter
Filtration Surface Area	16m ²
1 st stage	Mesh Spark Arrestor
2 nd stage	Coarse 70% (G4 pre-filter)
3 rd stage	ePM ₁ 65% (F8)

Spare Filter Order Code

Coarse 70% (G4 pre-Filter)	1201G4OF01
ePM ₁ 65% (F8)	1202F8AF02

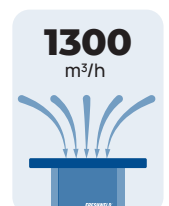
Product Order Code

800 x 1000 mm	301KMF1000
800 x 1200 mm	301KMF1250
800 x 1500 mm	301KMF1500

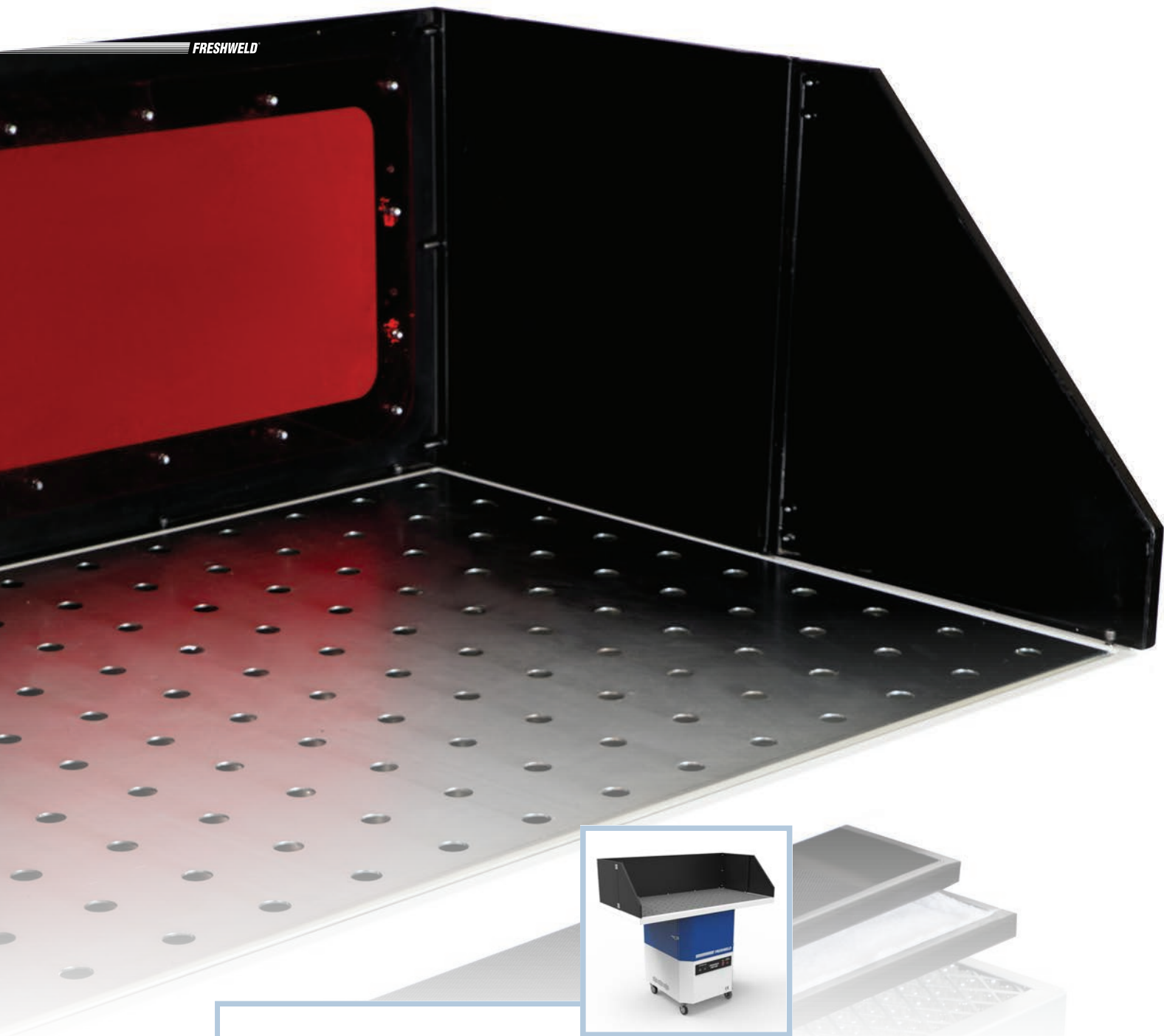
Technical Information

Device Information

Dimensions (W x D x H) ⁽¹⁾	800 x 1X00 x 1030 mm
Weight (without shield)	120 - 125 - 130 kg
Motor Power	1,5 kW
Supply Voltage	3x400V/50Hz
Noise Level	72 dB
Maximum Pressure	2200 Pa
Extraction Capacity	1300m ³ /h



FRESHWELD



Shield Height
400mm ~ 650mm

Table Length
1000mm ~ 1200mm ~ 1500mm



Voltage Options
Please Ask



Shield Options
see: Shields



KTM Series



Welding & Grinding
Downdraft Working Table



Integrated with Central System
Table Without Fan And Filter

Specifications

- Fume and dust are sucked before reaching to operator's respiratory tract thanks to downdraft extraction
- It supplies safe working environment thanks to its durable material structure
- Easy to clean collected particules thanks to integrated dust tray
- It is comfortable to work with its ergonomic design
- It has long-life with its thick and crom-coated grille
- Could be connected to the central ventilation system
- External filter or fan system could be connected
- Shield options prevent the particules to spread around

Usage Areas

- Designed for suction of dust occurred during grinding applications of small metal parts
- Suitable to use for welding applications
- Suitable for light and coarse level of grinding

General Information

Recommended Required Extraction Capacity

KTM/1000 3.000 m³/h

KTM/1250 3.500 m³/h

KTM/1500 4.500 m³/h

Maximum Pressure Drop 500 Pa

Table Order Codes

850 x 1000 mm Downdraft Table 321KTM1000

850 x 1200 mm Downdraft Table 321KTM1250

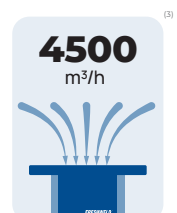
850 x 1500 mm Downdraft Table 321KTM1500

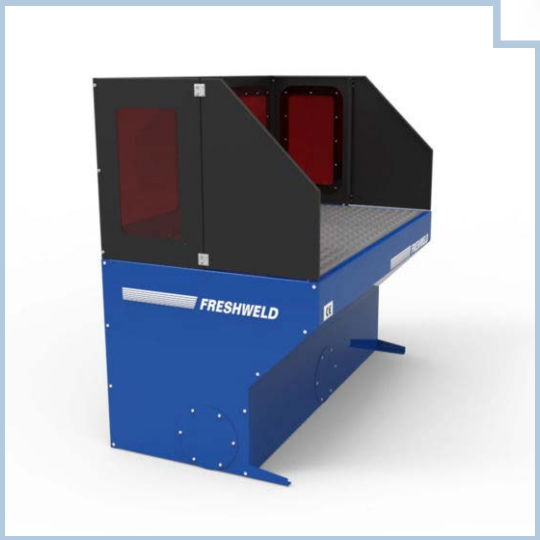
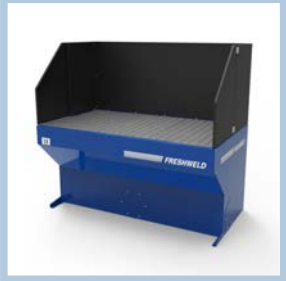
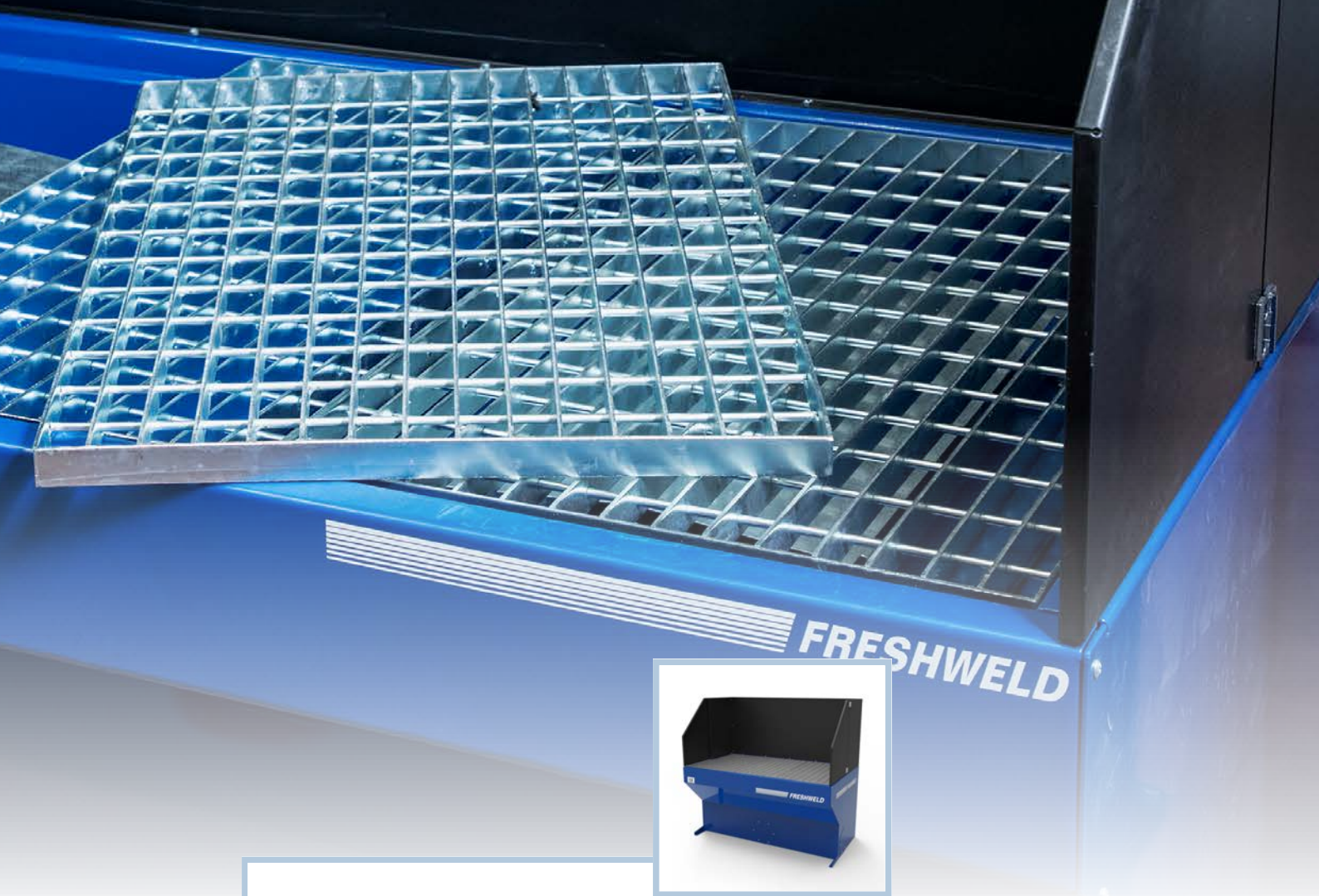
Technical Information

Table Information

Cannal connection Ø150mm - Ø200mm

Height of the Bench ⁽¹⁾ 750mm





Shield Height
400mm ~ 650mm

Table Length
1000mm ~ 1200mm ~ 1500mm

 **Voltage Options**
Please Ask



SHIELDS

For KMF & KTM Models

KMF Shield Without Visor

KMF/1000	h: 400mm	311SPR1040
KMF/1250	h: 400mm	311SPR1240
KMF/1500	h: 400mm	311SPR1540
KMF/1000	h: 650mm	311SPR1065
KMF/1250	h: 650mm	311SPR1265
KMF/1500	h: 650mm	311SPR1565

KTM Shield Without Visor

KTM/1000	h: 400mm	331SPR1040
KTM/1250	h: 400mm	331SPR1240
KTM/1500	h: 400mm	331SPR1540
KTM/1000	h: 650mm	331SPR1065
KTM/1250	h: 650mm	331SPR1265
KTM/1500	h: 650mm	331SPR1565

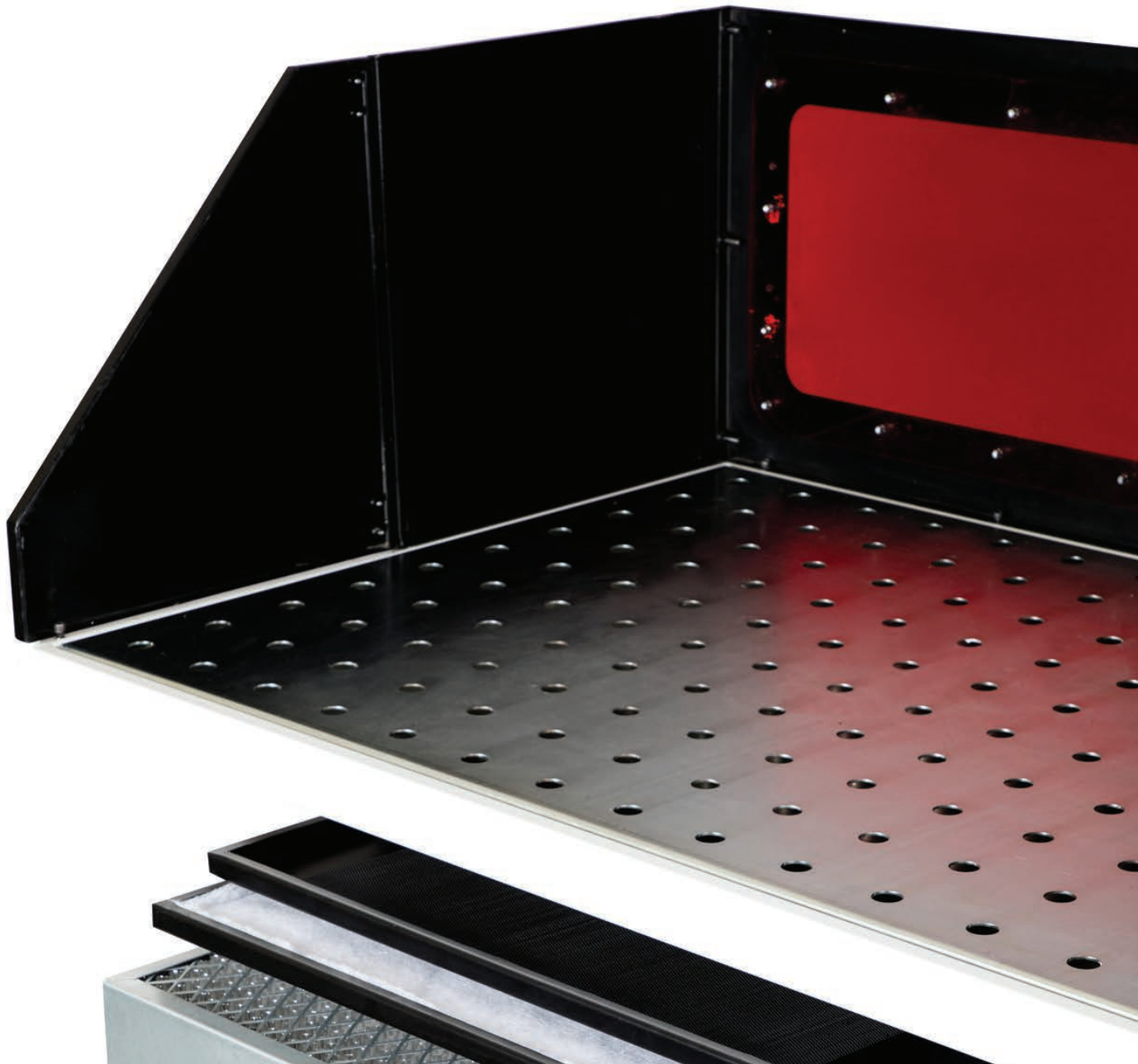


KMF Shield With Visor

KMF/1000	h: 400mm	31SPRP1040
KMF/1250	h: 400mm	31SPRP1240
KMF/1500	h: 400mm	31SPRP1540
KMF/1000	h: 650mm	31SPRP1065
KMF/1250	h: 650mm	31SPRP1265
KMF/1500	h: 650mm	31SPRP1565

KTM Shield With Visor

KTM/1000	h: 400mm	33SPRP1040
KTM/1250	h: 400mm	33SPRP1240
KTM/1500	h: 400mm	33SPRP1540
KTM/1000	h: 650mm	33SPRP1065
KTM/1250	h: 650mm	33SPRP1265
KTM/1500	h: 650mm	33SPRP1565



KTF Series



Grinding Table
Downdraft



Mobility
Lockable Wheels



Jet-Pulse
Automatic Filter Cleaning

Specifications

- Fume and dust are sucked before reaching to operator's respiratory tract thanks to downdraft extraction
- It supplies safe working environment thanks to its durable material structure
- Easy to clean collected particules thanks to integrated dust tray
- It is comfortable to work with its ergonomic design
- Thanks to its wooden grill, the painted parts will not be scratched
- It prevents particles from spreading around with its three-sided closed shield system
- It provides high performance with low noise thanks to plug fan
- Movable with its wheeled structure

Usage Areas

- Designed for suction of dust occurred during grinding applications of small metal parts
- Suitable to use for welding applications
- Suitable for light and coarse level of grinding

General Information

Filter Information

Filter Method	100% Poliester Cartridge Filter
Filter Type	PTFE Membrane Coated
Filtration Surface Area	20m ²

Spare Filter Order Code

PTFE Filter 350x850mm	1202KTF508
-----------------------	------------

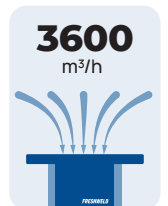
Product Order Code

800 x 1500 mm	341KTF1500
---------------	------------

Technical Information

Device Information

Dimensions (W x D x H) ⁽¹⁾	950 x 1500 x 1150 mm
Weight (without shield)	750 mm
Motor Power	2,2 kW
Supply Voltage	3x400V/50Hz
Noise Level	72 dB
Maximum Pressure	1200 Pa
Extraction Capacity	3600m ³ /h





Modular Metal Grid
You can work more efficiently in partial or patterned welding works.



Modular Wooden Grid
Your grinding products are protected from being scratched.



Shield Height
650mm



Voltage Options
Please Ask



i8Series



High Performance
New Generation Hood



Integrated System
Cabin With Fan and Filter



Integrated with Central System
Cabin Without Fan And Filter

General Information

Single Compartment Modular Hoods

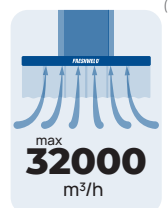
Order Codes	Dimensions mm	Flow m ³ /h	Pressure Drop Pa	Weight kg
4010181015	1000 x 1500	1200	300	60
4010181020	1000 x 2000	1600	300	70
4010181025	1000 x 2500	2000	300	80
4010181030	1000 x 3000	2400	300	90
4010181515	1500 x 1500	1800	300	72
4010181520	1500 x 2000	2400	300	85
4010181525	1500 x 2500	3000	300	97
4010181530	1500 x 3000	3600	300	101
4010182020	2000 x 2000	3200	300	98
4010182025	2000 x 2500	4000	300	112
4010182030	2000 x 3000	4800	300	129

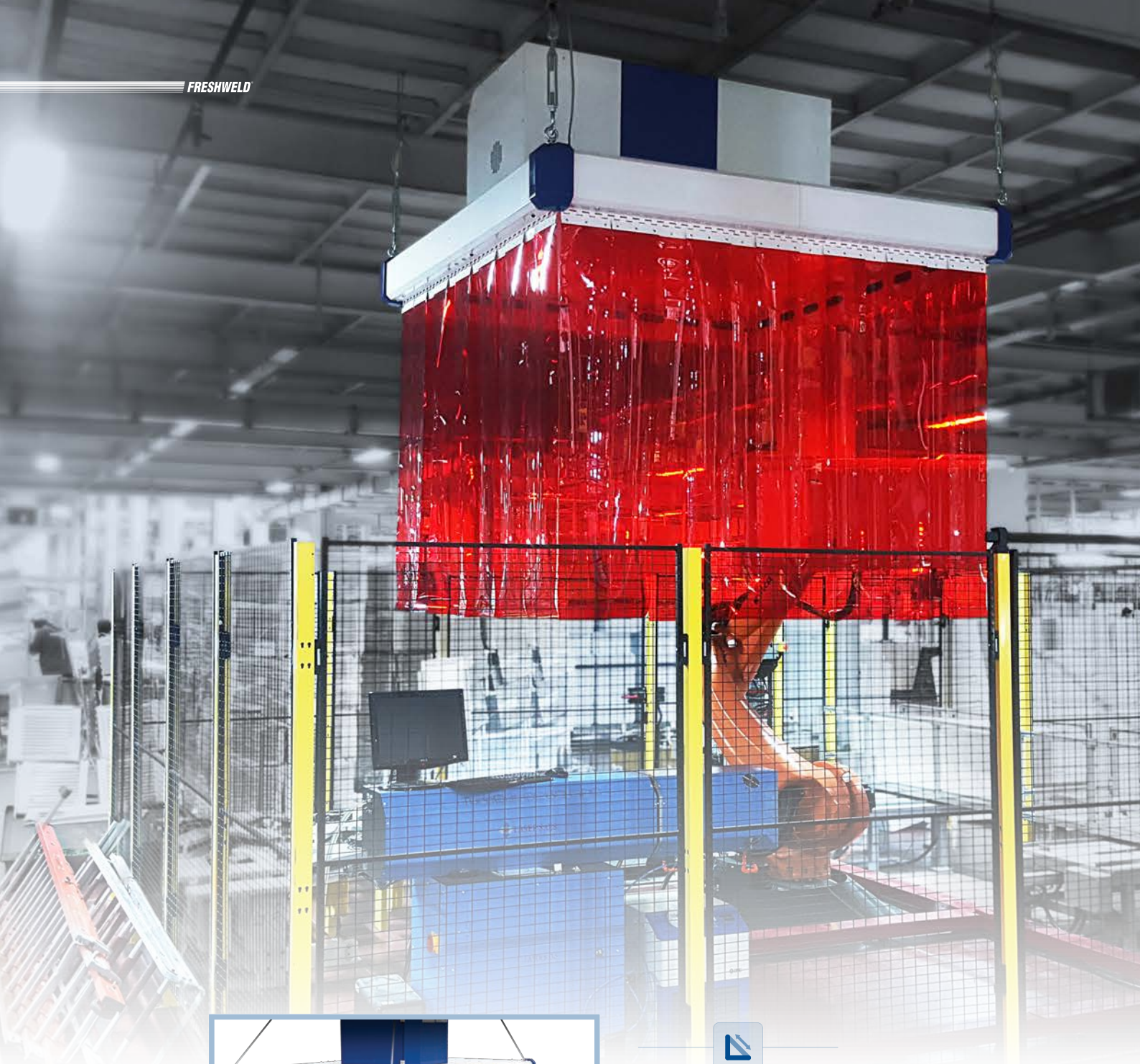
Specifications

- Supplies comprehensive solutions for your facility thanks to multiple assembly options
- Thanks to its modular design, it could be produced in special sizes for your application
- Welding curtains protect your personnel and equipment from sparks
- It filters 99% of extracted fumes with its integrated filter unit
- Easy access thanks to external control panel

Usage Areas

- Designed to extract fume occurred during robotic welding applications
- Thanks to its aesthetic design, it could be used as hood for different applications





Please Contact Us For
Tailored Solutions
To Your Projects

 **Voltage Options**
Please Ask



TORFIL/125



High Vacuum
Extraction System



Mig/Mag Welding
On-Torch Extraction Unit



Jet-Pulse
Automatic Filter Cleaning



Mobile Unit
Lockable Wheels

Specifications

- Non-stop operation
- Thanks to automatic-cleaning filter system, filters are cleaned automatically
- Collects dust and particles in the dust bucket
- Reliable protection thanks to high efficient cartridge filters
- 45mm hose connection

Usage Areas

- Designed to extract fumes occurred during manual welding applications from the torch
- Suitable for filtering unalloyed, low alloy and high alloy steel.
- Provides high performance on corner welding, T Joint welding, and overlay welding
- Not recommended for butt-welding

General Information

Filter Information

Filter Method	Automatic Cleanable
Filter Type	e-PTFE membrane filter
Filtration Surface Area	4m ²
Filter Info	ePM ₁₀ 60% (M6) 4m ²
Pressed Air Connection	5 – 6 bar

Spare Filter Order Code

One Connection Port	1001TRF125
---------------------	------------

Product Order Code

ePM ₁₀ 60% (M6) 4m ²	1202M6HV06
--	------------

Technical Information

Device Information

Dimensions (W x D x H)	380 x 700 x 680 mm
Weight	76 kg
Motor Power	1,3 kW
Supply Voltage	3x400V/50Hz
Noise Level	68 dB
Maximum Pressure	20.000 Pa
Extraction Capacity	125m ³ /h





i Welding Torch is not included



TORFIL/500



High Vacuum
Extraction System



Robotic Welding
On-Torch Extraction Unit



Jet-Pulse
Automatic Filter Cleaning



Mobile Unit
Lockable Wheels

Specifications

- Non-stop operation
- Thanks to automatic-cleaning filter system, filters are cleaned automatically
- Collects dust and particles in the dust bucket
- Reliable protection thanks to high efficient cartridge filters
- 80mm hose connection
- No need for additional compressor since it has self compressor

Usage Areas

- Designed to extract fumes occurred during robotic welding applications from the torch
- Suitable for filtering unalloyed, low alloy and high alloy steel.
- In robotic welding applications, the extraction system is done on existing torch with torch-specific connection apparatus.

General Information

Filter Information

Filter Method	Automatic Cleanable
Filter Type	e-PTFE membrane filter
Filtration Surface Area	10m ²
Filter Info	ePM ₁₀ 60% (M6) 10m ²
Pressed Air Connection	Self Compressed

Spare Filter Order Code

Four Connection Port	1011TRF500
----------------------	------------

Product Order Code

ePM ₁₀ 60% (M6) 10m ²	1202M6HV07
---	------------

Technical Information

Device Information

Dimensions (W x D x H)	1200 x 650 x 2110 mm
Weight	130 kg
Motor Power	5,5 kW
Supply Voltage	3x400V/50Hz
Noise Level	74 dB
Maximum Pressure	36.000 Pa
Extraction Capacity	530 m ³ /h





i Welding Torch is not included



TSF Series



Extraction Fan
Stationary Unit



Stationary Unit
Provides Space Advantage



Single Acrobat Arm
Length Options

Specifications

- Easy to use in workshops with limited spaces
- Reachable to desired area thanks to its flexible arm structure
- Fully complies with European Machinery Safety Regulation
- Supplies reliable usage thanks to powerful aluminium fan
- Prevents motor failures thanks to motor protection switch

Usage Areas

- Designed for extracting high level of dust and fume
- Used in places where there is no need for filter
- Suitable for extracting fume, gas, vapour and light dust

General Information

Device Information

Supply Voltage	3x400V/50Hz
Noise Level	70 dB
Maximum Pressure	2000 Pa ~ 2200 Pa
Extraction Capacity	1.300m ³ /h

Spare Filter Order Code

Acrobat Arm Hose 1m	A244000246
---------------------	------------

Product Order Code

Snail Fan without arm	1,1 kW	921MSF1100
2m Arm Hose	1,1 kW	921TSF1102
3m Arm Hose	1,1 kW	921TSF1103
4m Arm Hose	1,1 kW	921TSF1104
Snail Fan without arm	1,5 kW	921MSF1500
5m Arm Hose	1,5 kW	921TSF1532
6m Arm Hose	1,5 kW	921TSF1533
7m Arm Hose	1,5 kW	921TSF1534

Technical Information

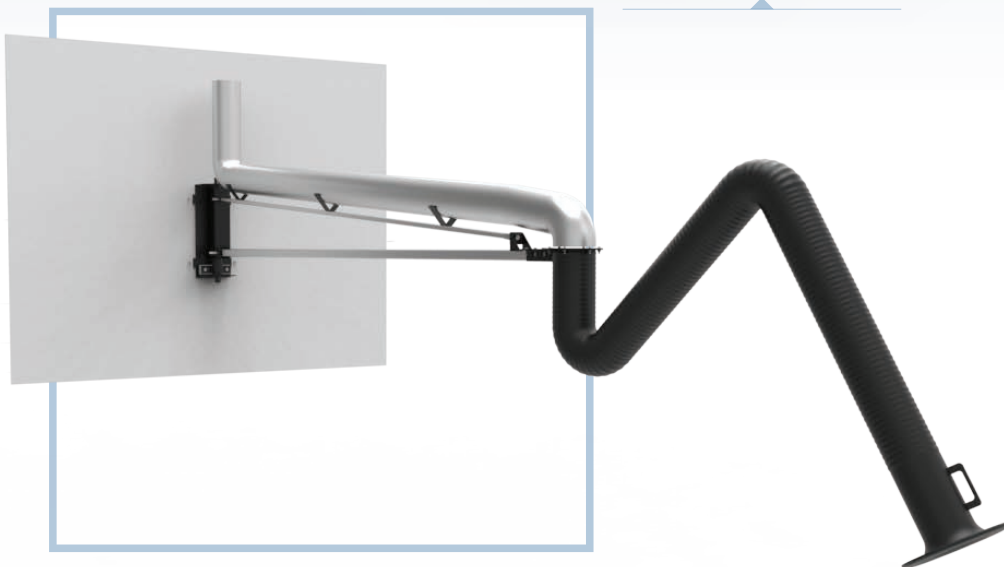
Device Information

Dimensions (W x D x H)	452 x 550 x 600 mm
Weight (without arm)	36 kg
Diameter of the Arm	Ø152mm
TSB Extension Console Length	3m ⁽¹⁾





Length of the Arm :
Can be ordered as
2, 3, 4, 5, 6 or 7
meters



MDT Series

 **Extraction Fan**
Integrated Extraction

 **Portable Unit**
Movable Foot

Specifications

- Easily movable to everywhere thanks to its wheeled structure
- Thanks to its flexible suction hose and magnet, it can be reached and fixed to the desired area
- Fully complies with European Machinery Safety Regulation
- Supplies reliable usage thanks to powerful aluminium fan
- Prevents motor failures thanks to motor protection switch

Usage Areas

- Designed for extracting high level of dust and fume
- Used in places where there is no need for filter
- Suitable for extracting fume, gas, vapour and light dust

General Information

Device Information

Motor Power	1,1 kW
Supply Voltage	3x400V/50Hz
Noise Level	70 dB

Spare Filter Order Code

Extraction and Shot Hose	1m	A244000246
--------------------------	----	------------

Product Order Code

Snail Fan without hose	931MDT1100
5m suction + 5m shot hose	931MDT1105
5m suction + 10m shot hose	931MDT1110
5m suction + 15m shot hose	931MDT1115

Technical Information

Device Information

Dimensions (W x D x H)	452 x 550 x 600 mm
Weight (without arm)	40 kg
Diameter of the Arm	Ø152mm
Maximum Pressure	2000 Pa
Extraction Capacity	2900m ³ /h





Extraction and Shot hoses can be ordered in separate sizes.



TSA Series



Acrobat Arm

Wall Mounted



Extra Flexible and Light

Steel Wire Supported

Specifications

- Easy to use in workshops with limited spaces
- Reachable to desired area thanks to its flexible arm structure
- User friendly due to easy movement by one hand
- Protects arm position thanks to self supported design
- Acrobat arms can be connected to extraction ducts and fans with multiple connection options
- -40C ~ +90C durable anti-static Flame Retardant PU hose

Usage Areas

- Designed to connect to fans or central extraction systems
- Designed for extracting high level of dust and fume
- Suitable for extracting fume, gas, vapour and light dust

General Information

TSA Acrobat Arm

Weight	10 - 18 kg
Acrobat Arm Diameter	Ø152mm

TSB Extension Console ⁽¹⁾

Weight	24 - 26 kg
Hose diameter for extension console	Ø150mm
Length for TSB extension console	3m
Maximum Pressure Drop	1400 Pa

Spare Filter Order Code

Acrobat Arm Hose	1m	A244000246
------------------	----	------------

Product Order Code

2m acrobat arm	911TSA0002
3m acrobat arm	911TSA0003
4m acrobat arm	911TSA0004
5m acrobat arm	911TSA0032
6m acrobat arm	911TSA0033
7m acrobat arm	911TSA0034





Length of the Arm :
Can be ordered as
2, 3, 4, 5, 6 or 7
meters





Please Contact Us For
Tailored Solutions
To Your Projects

Specifications

- Supplies comprehensive solutions for your facility thanks to multiple assembly options
- Thanks to its modular design, it can be produced in special sizes for your application
- Protects your personnel and equipments from welding arcs and spatter
- The curtain can be moved aside by rings
- Has certificates of **DIN EN ISO 25980 / DIN EN 1598:2011-2**

Usage Areas

- Separating individual work and facility area
- Protection against harmful beams, welding arcs and spatter

Options

- Can be produced on special sizes according to your project



General Information

Order Code	Description	Size	Property	Certification
1101KKP220	Welding Curtain	2x200mm	Red PVC Stripe	-
1101KKP230	Welding Curtain	2x300mm	Red PVC Stripe	* DIN EN ISO 25980 / DIN EN 1598:2011-2
1101KKP212	Welding Curtain	2x1200mm	Red Plate	* DIN EN ISO 25980 / DIN EN 1598:2011-2
1101KKP014	Welding Curtain	0,40x1400mm	Red Plate	* DIN EN ISO 25980 / DIN EN 1598:2011-2



MP Series



Welding Screen

DIN EN ISO 25980 Certified



Mobile with Wheels

Lockable Wheels



Disassembled

Easy To Store



Please Contact Us For
Tailored Solutions
To Your Projects

Specifications

- Supplies comprehensive solutions for your facility thanks to multiple assembly options
- Thanks to its modular design, it could be produced in special sizes for your application
- Protects your personnel and equipment from sparks
- The curtain can be moved aside by rings
- Easy to store and move thanks to its disassembled feature
- Has certificates of **DIN EN ISO 25980 / DIN EN 1598:2011-2**

Usage Areas

- Separating individual work and facility area
- Protection against harmful beams, welding arcs and spatter

Options

- Can be produced on special sizes according to your project



General Information

Order Code	Description	Property	Screen Size	Curtain Size
1111MP1420	Welding Screen	Red Curtain	1460x2000mm	0.40x1400x1800mm



Pulsatron Compact



Central Filtration System
Dry Smoke and Dust



Jet-Pulse
Automatic Filter Cleaning



Cartridge
Filter



HEPA Filter
High Efficiency Filtration



Specifications

- Commits emission value as $\leq 5 \text{ mg/Nm}^3$
- Low noise level of **68 – 75 dBA**
- With integrated **Jet-Pulse** automatic filter cleaning system, it cleans own filters with compressed air.
- Adds aesthetics to your business with its modular structure
- It can be produced with a minimum capacity of **1000 m³/h** and a maximum of **48000 m³/h**

Usage Areas

- Designed for filtration of smoke and dust generated during industrial applications
- Suitable for welding, grinding, sandblasting, laser cutting, plasma cutting and polishing applications.

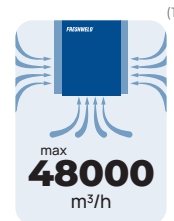
Options

- Silencers
- 3-color LED filter pollution indicator
- Integrated HEPA filter for absolute filtration
- Automatic dust discharge system
- Mechanical shaking system to clean the cartridges
- Start & Stop or frequency adjustable electrical panel
- Horizontal spark arresting cyclone for special applications



General Information

Order Codes	AirFlow m ³ /h	Pressure Pa	Power kW	Surface m ²	Velocity m/s	Connection mm	Dimensions L x P x H (mm)
511PCTV001	1000 - 1500	2000 - 1750	1,5	20	0,020	Ø 160	850x930x2815
511PCTV002	1500 - 2000	1750 - 1490	1,5	20	0,028	Ø 200	850x930x2815
511PCTV003	1500 - 2500	2700 - 2100	3	40	0,017	Ø 250	850x930x2815
511PCTV004	2000 - 4000	3200 - 2100	4	40	0,028	Ø 250	850x930x2815
511PCTV005	4000 - 5000	2100 - 1800	4	40	0,035	Ø 300	850x930x2815
511PCTV006	5000 - 5800	1800 - 1500	4	80	0,020	Ø 320	850x930x2815
511PCTV007	6000 - 7000	2000 - 1650	5,5	80	0,024	2 x Ø 250	1700x930x2425
511PCTV008	7000 - 8000	2800 - 2650	7,5	80	0,028	2 x Ø 250	1700x930x2425
511PCTV009	8000 - 9000	2650 - 2150	7,5	120	0,020	3 x Ø 250	2550x930x2425
511PCTV010	9000 - 11000	2450 - 2200	2 x 5,5	160	0,019	4 x Ø 250	3400x930x2425
511PCTV011	11000 - 14000	3050 - 2800	2 x 7,5	160	0,024	4 x Ø 250	3400x930x2425



(1) min 1000m³/h ~ max 48000m³/h extraction capacity

CleanMist



Centrifugal
Filtration System



HEPA Filter
High Efficiency Filtration



HEPA Filtered Model

Specifications

- Simple & Quick installation
- High Efficiency
- Low Noise
- Reduced maintenance thanks to the self-cleaning impeller
- Technical assistance and after-sales service

Usage Areas

- It is designed for the purification of steam and dirty liquids from lathes and CNC machine tools.
- Suitable for grinding machines and component washing machines

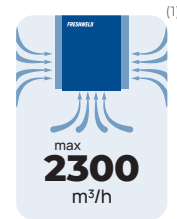
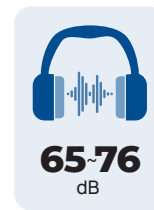
Options


- Silencers
- HEPA filters
- Electrostatic Final Filter (FEF)
- Pre-drainage systems to prevent overloading the filters
- Baffles to ensure optimum performance
- Wide range of supporting frames for specific installation requirements
- Instruments to notify the condition of the filters including a usage gauge to determine maintenance requirements.



General Information

Order Codes	AirFlow m ³ /h	Power kW	Noise dB(a)	Weight kg	Connection mm	Dimensions L x W x H (mm)
601FCM0300	300	0,55	65	15	Ø 100	400 x 400 x 400
601FCM0500	500	0,55	65	15	Ø 150	400 x 400 x 400
601FCM1000	1000	1,5	74	35	Ø 100	500 x 500 x 600
601FCM1400	1400	1,5	74	35	Ø 150	500 x 500 x 600
601FCM1800	1800	2,2	76	40	Ø 150	500 x 500 x 600
601FCM2300	2300	2,2	76	40	Ø 200	500 x 500 x 600




 Please Contact Us For
Tailored Solutions
 To Your Projects



(1) min 300m³/h ~ max 2300m³/h extraction capacity

MCOS



Central Filtration System
Oil-Mist Filtration



Disposable Cassette Filter
F7 - F9 - H11 Filters



HEPA Filter
High Efficiency Filtration

Specifications

- **High Efficiency**
99,99% for particles larger than $1\mu\text{m}$
99% for particles larger than $0,5\mu\text{m}$
95% for particles larger than a $0,2\mu\text{m}$
- Easy installation with customized solutions
- Costs saving management and maintenance
- Provides maximum efficiency with in-line filters of F7 - F9 - H11 class

Usage Areas

- Used in CNC, Lathe, Clamping, Drilling, Threading, Tapping, Saw cutting benches
- For oil-mist filtration of cutting oils that using petroleum oil.

Options

- Silencers
- Start & Stop or frequency adjustable electrical panel
- H11 or H13 class HEPA filter option
- 3-color LED filter pollution indicator
- In applications requiring low capacity, it does not take up much space in your workshop with the **MCOS mini** series.



MCOS Mini

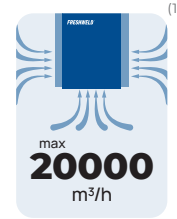
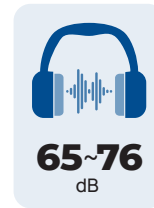



MCOS

Order Codes	AirFlow m ³ /h	Power kW	Filtration Stages	Weight kg	Connections mm	Dimensions L x W x H (mm)
611MCOS200	2000	2,2	3	330	Ø 200	730 x 685 x 2350
611MCOS400	4000	5,5	6	530	Ø 300	730 x 1280 x 2650
611MCOS800	8000	7,5	12	990	500 x 300	1460 x 1280 x 2850

MCOS Mini

Order Codes	Installation G - R	AirFlow m ³ /h	Power kW	Filtration Stages	Weight kg	Connections mm	Dimensions L x W x H (mm)
611MINI100	G-Ground	1000	1,1	2	90	Ø 150	530 x 555 x 1565
611MINI101	R-CounterTop	1000	1,1	2	75	Ø 150	530 x 555 x 1255




 Please Contact Us For
Tailored Solutions
 To Your Projects



(1) min 1000m³/h ~ max 20000m³/h extraction capacity

MISTCompact



Central Filtration System
Oil-Mist Filtration



HEPA Filter
High Efficiency Filtration



Cartridge Filter
Filter

Specifications

- **Efficiency**
Emissions $\leq 5 \text{ mg/Nm}^3$ *
- Energy saving
- Improve the working environment
- Easy installation
- Customized systems solutions
- Technical assistance and after-sales service
- Costs saving of management and maintenance

Usage Areas

- Used in CNC, Lathe, Clamping, Drilling, Threading, Tapping, cutting and general mechanical machining benches
- For oil mist filtration of cooling oils emulsified with water.

Options

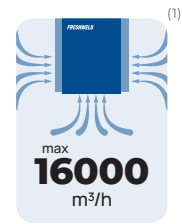
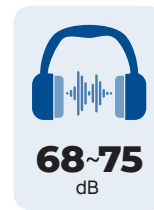
- Silencers
- Start & Stop or frequency adjustable electrical panel
- H11 or H13 class HEPA filter option
- 3-color LED filter pollution indicator




* Other emissions reachable on request

General Information

Order Codes	AirFlow m ³ /h	Power kW	Pressure Pa	Surface m ²	Connection mm	Dimensions L x P x H (mm)
621MC02TV1	1.500	1,5	1800	42	Ø300	850 x 900 x 3215
621MC04TV2	3.000	3	1800	84	Ø300	850 x 900 x 3215
621MC08TV3	6.000	5,5	2000	168	Ø300	1700 x 900 x 2815
621MC12TV4	8.000	7,5	2450	252	Ø300	2550 x 900 x 3215
621MC16TV5	12.000	2 x 5,5	2000	336	Ø300	3400 x 900 x 3215
621MC20TV6	14.000	2 x 7,5	2450	420	Ø300	4250 x 900 x 3215




 Please Contact Us For
Tailored Solutions
 To Your Projects



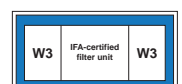
(1) min 1500m³/h ~ max 16000m³/h extraction capacity

FilterTower

 **Plug & Run**
All-in-One Standalone Unit

 **Jet-Pulse**
Automatic Filter Cleaning

 **Nano Filtering**
Fiber Layered



Specifications

- Suitable for use in all sizes of workspaces
- The filter tower can work by itself. In addition, the hood does not need an air duct or chimney.
- It only needs electrical connection and compressed air connection for automatic filter cleaning for operation.
- Made of high-tech polycarbonate construction resistant to impacts, scratches and heat.
- Its capacity is standardized to be minimum 5000 m³/h and maximum 20000 m³/h

Usage Areas

- It is used in workspaces where the large parts are produced and local suction systems such as acrobat arms cannot be used.
- It can be used for emissions from different technical processing processes such as fumes, dust particles, aerosols and gaseous air pollutants.

Options

- Tested and manufactured according to IFA W3 standards
- Remote controllable
- Working only when the air is polluted with the air quality sensor and shutting itself off when the filtration is finished.
- Extra energy saving and noise reduction with the efficiency package
- Extra safety package for flying sparks and fire hazard
- Activated Carbon filter mats for gas cleaning and odor reduction
- Reduced operating costs with nano-fiber layers cartridges



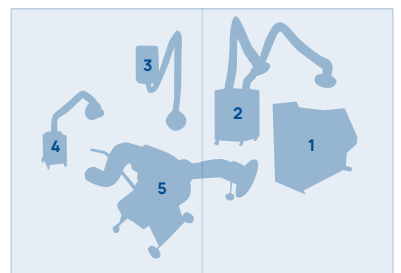
Please Contact Us For
Tailored Solutions
To Your Projects

General Information

Order Codes	Capacity m ³ /h	Power kW	Pressure Pa	Surface m ²	Filter Stages	Weight kg	Dimensions L x W x H (mm)
711NVSFT05	5000	5,5	62000	80	4	990	1619x1675x2885
711NVSFT10	10000	7,5	2100	148	4	1280	1619x1675x3643
711NVSFT15	15000	11	1550	222	6	1480	2066x1756x3643
711NVSFT20	20000	15	1900	222	6	1590	2066x1756x3643
711FAW305	5000 IFA W3	5,5	2000	84	4	990	1619x1675x2885
711FAW310	10000 IFA W3	7,5	2100	151	4	1280	1619x1675x3643
711FAW315	15000 IFA W3	11	1550	226	6	1480	2066x1756x3643
711FAW320	20000 IFA W3	15	1900	226	6	1590	2066x1756x3643
711ECBLU08	8000 ECBlue	3,9	2000	80	4	990	1619x1675x2885
711ECBLU14	14000 ECBlue	2 x 3,9	2100	148	4	1280	1619x1675x3643
711ECBLU18	18000 ECBlue	3 x 3,9	1550	222	6	1480	2066x1756x3643
711ECBLU23	23000 ECBlue	4 x 3,9	1900v	222	6	1590	2066x1756x3643



- 1 - KTF/1500 #34
- 2 - M2/2200 #12
- 3 - SMK/910 #24
- 4 - M1/1100 #8
- 5 - MDT Series #44



www.freshweld.com.tr

FRESHWELD
International Trade and Industry Inc.

Meriç Mahallesi 5748/1 Sokak No:26
35090 Bornova - İZMİR / TÜRKİYE

info@freshweld.com.tr

+90 232 472 29 04
+90 850 450 1 232



Your Partner:



@freshweldair