

Concerto Touch



Necta

Concerto Touch



User Interface

- Selection area with wide 13.3" full HD touch screen.
- Visual drinks menu with large customisable product icons, elegant and user-friendly.
- Possibility to display product information and spots during selection and preparation phases.
- Nutritional facts for each selection.
- Master/slave connection with other Necta's S&F models (height 1700 mm).



Technology

- Available single espresso version with Z4000 espresso brewer.
- Up to 4 customisable product categories for a wider offer (ex. 2 categories for hot drinks, 2 categories for promotions and snacks -available when Concerto Touch is banked with a S&F model).
- Self adjusting blades.
- 24 volts variable speed mixer.

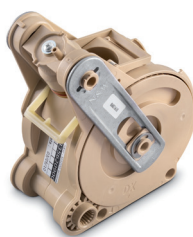


Electronics

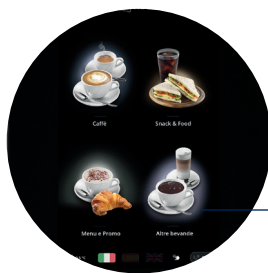
- Advanced electronics, already implemented on other models of our Group.
- Simple and intuitive programming and customizing of the technical menu.
- Download of EVA DTS statistics through Bluetooth or IRDA (with BlueRed kit).
- Possibility of ethernet or wi-fi connection for RSS feed management.
- Flexible management of any payment system and fully compatible with Executive and MDB protocols.



A revolutionary touch to your coffee break



Patented coffee brewer for a perfect coffee



Up to 4 customizable product category, depending on location



We reserve the right to alter specifications without prior notice



Features

Height	1700 mm
Width	600 mm
Depth	740 mm
Depth with open door	1250 mm
Weight	135 kg
Installed power	1850 W

necta.evocagroup.com

Necta

EVOCA S.p.A.
Via Roma 24, 24030 Valbrembo (BG) Italia
Tel. +39 035 606111 - Fax +39 035 606519



ISO 9001 : 2015 ISO 14001 : 2015