

BEFARD TRAILER CRANE XJ 34



The BEFARD XJ **TRAILER CRANE** crane on a trailer is a modern crane solution. It is compatible with various types of grippers and can be used for both reloading and assembly of sandwich panels, roofs, doors, windows and steel structures.

DEVICE'S FEATURES XJ 34

- maximum load capacity 2300kg
- maximum vertical range over 9,0m - with crane boom tip range ~ 10,0m
- crane radio remote control
- three hydraulic extensions and two manual
- powered by a gasoline engine (optional additionally electric 230V)
- rotating column
- four supports lowered hydraulically
- type of trailer - two-axle
- length, width of the trailer: about 4400x2020mm*
- trailer GVW 2000kg

RADIO CONTROL
AS STANDARD



OPTIONAL EQUIPMENT

- outrigger mats available

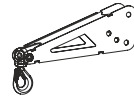
Electric (on-grid power)



Trailer mover



Crane boom tip



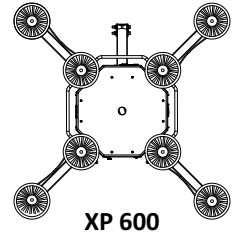
Hydraulic winch



*dimensions of the trailer and the method of opening the side walls may differ from those given in the catalogue

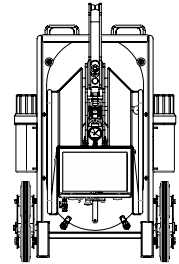
OPTIONAL EQUIPMENT

Vacuum gripper for glazing XP 600



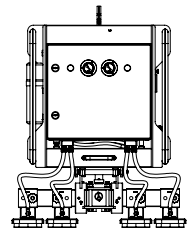
XP 600

Multifunctional vacuum gripper XPR 500



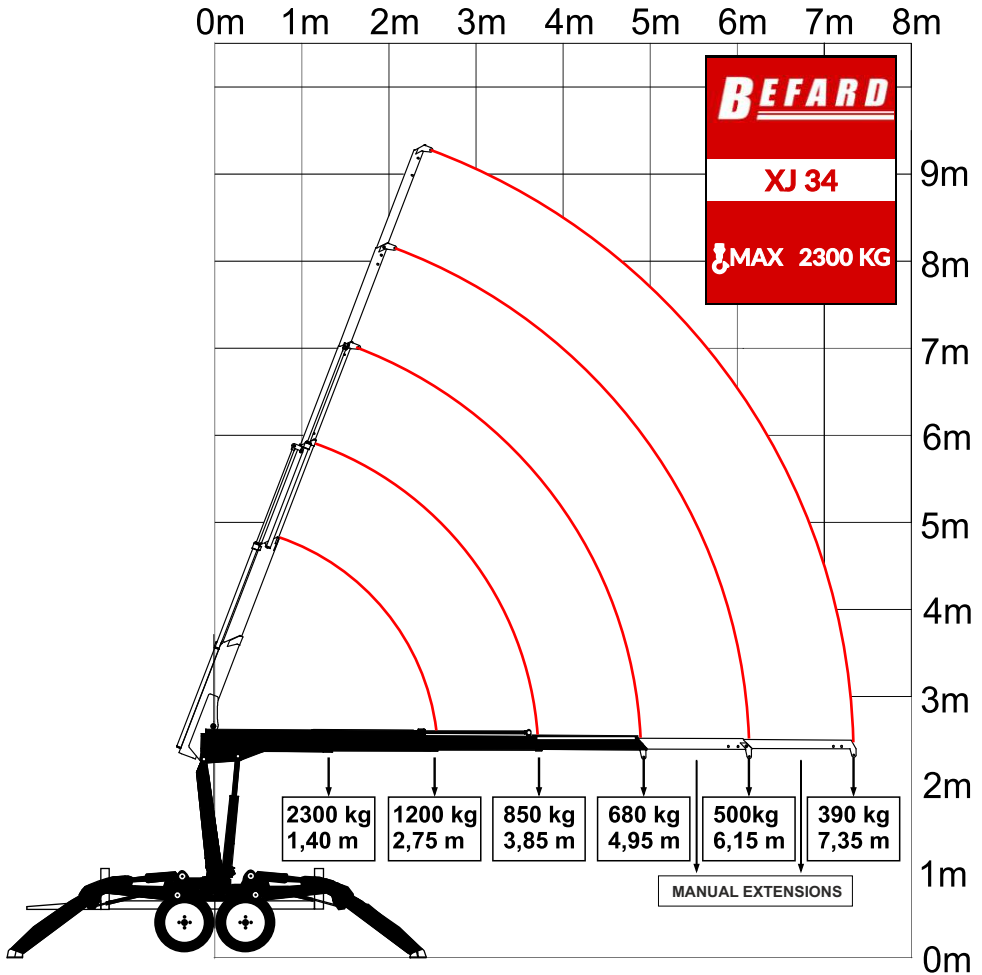
XPR 500

Vacuum gripper for sandwich panels XR 500



XR 500

XJ 34 BEFARD TRAILER CRANE



Equipping the device with a winch reduces the lifting capacity by 100 kg

The device meets the requirements of the Machinery Directive 2006/42/EC and Directive 2014/30/EU

