

# BEFARD TRAILER CRANE XJ 36



The BEFARD XJ **TRAILER CRANE** crane on a trailer is a modern crane solution. It is compatible with various types of grippers and can be used for both reloading and assembly of sandwich panels, roofs, doors, windows and steel structures.

## DEVICE'S FEATURES XJ 36

- maximum load capacity 1600kg
- maximum vertical range over 11,0m - with crane boom tip range ~12,0m
- crane radio remote control
- four hydraulic extensions
- powered by a gasoline engine (optional additionally electric 230V)
- rotating column
- four supports lowered hydraulically
- type of trailer - two-axle
- length, width of the trailer: about 4400x2020mm\*
- trailer GVW 2300kg

RADIO CONTROL  
AS STANDARD



## OPTIONAL EQUIPMENT

- outrigger mats available

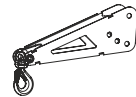
Electric (on-grid power)



Trailer mover



Crane boom tip



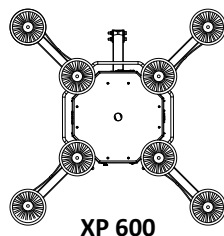
Hydraulic winch



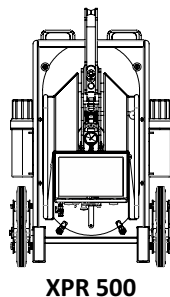
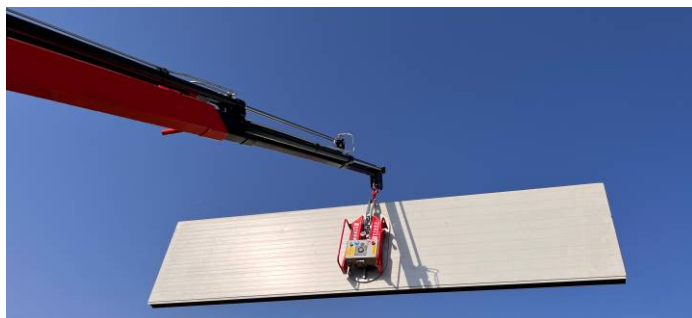
\*dimensions of the trailer and the method of opening the side walls may differ from those given in the catalogue

## OPTIONAL EQUIPMENT

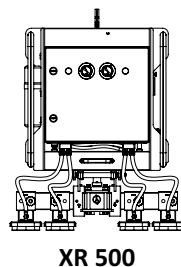
Vacuum gripper for glazing XP 600



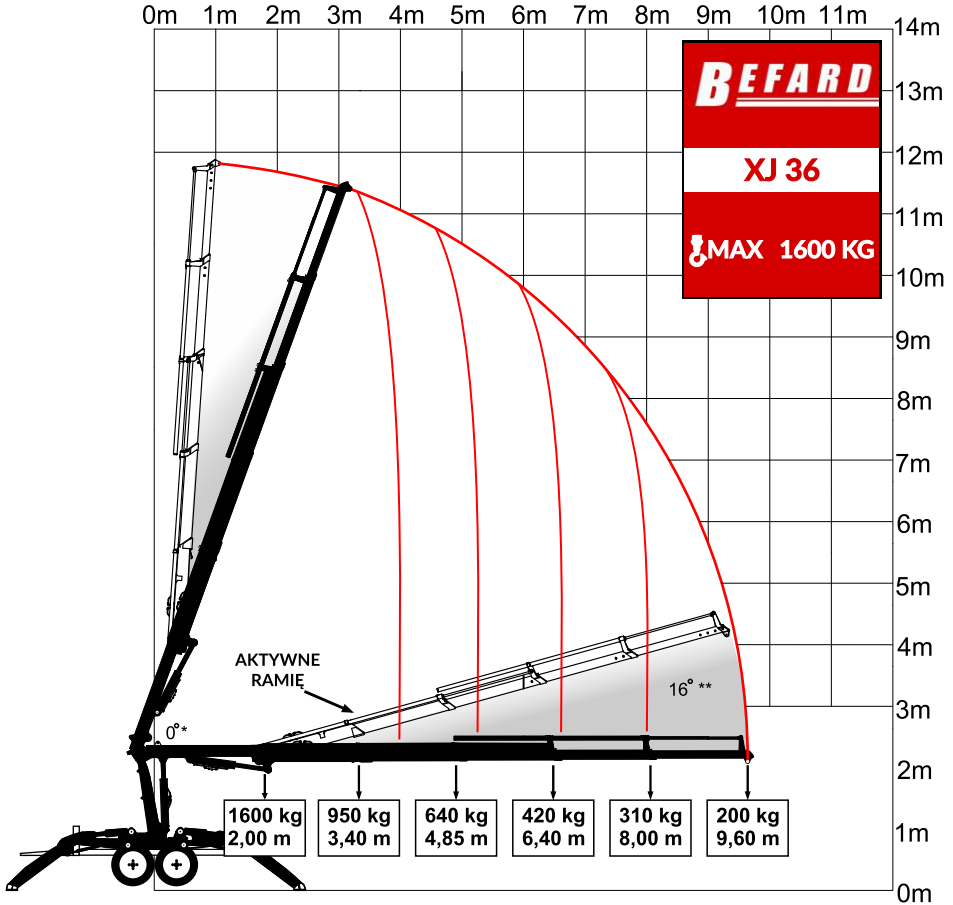
Multifunctional vacuum gripper XPR 500



Vacuum gripper for sandwich panels XR 500



## XJ 36 BEFARD TRAILER CRANE



\* Możliwość pracy przy pełnym wyprostowaniu obu ramion

\*\* Aktywne ramię z przegubem kolanowym, umożliwiające uzyskanie dodatkowego przelamania do 16° wzniosu

Equipping the device with a winch reduces the lifting capacity by 100 kg

The device meets the requirements of the Machinery Directive 2006/42/EC and Directive 2014/30/EU

