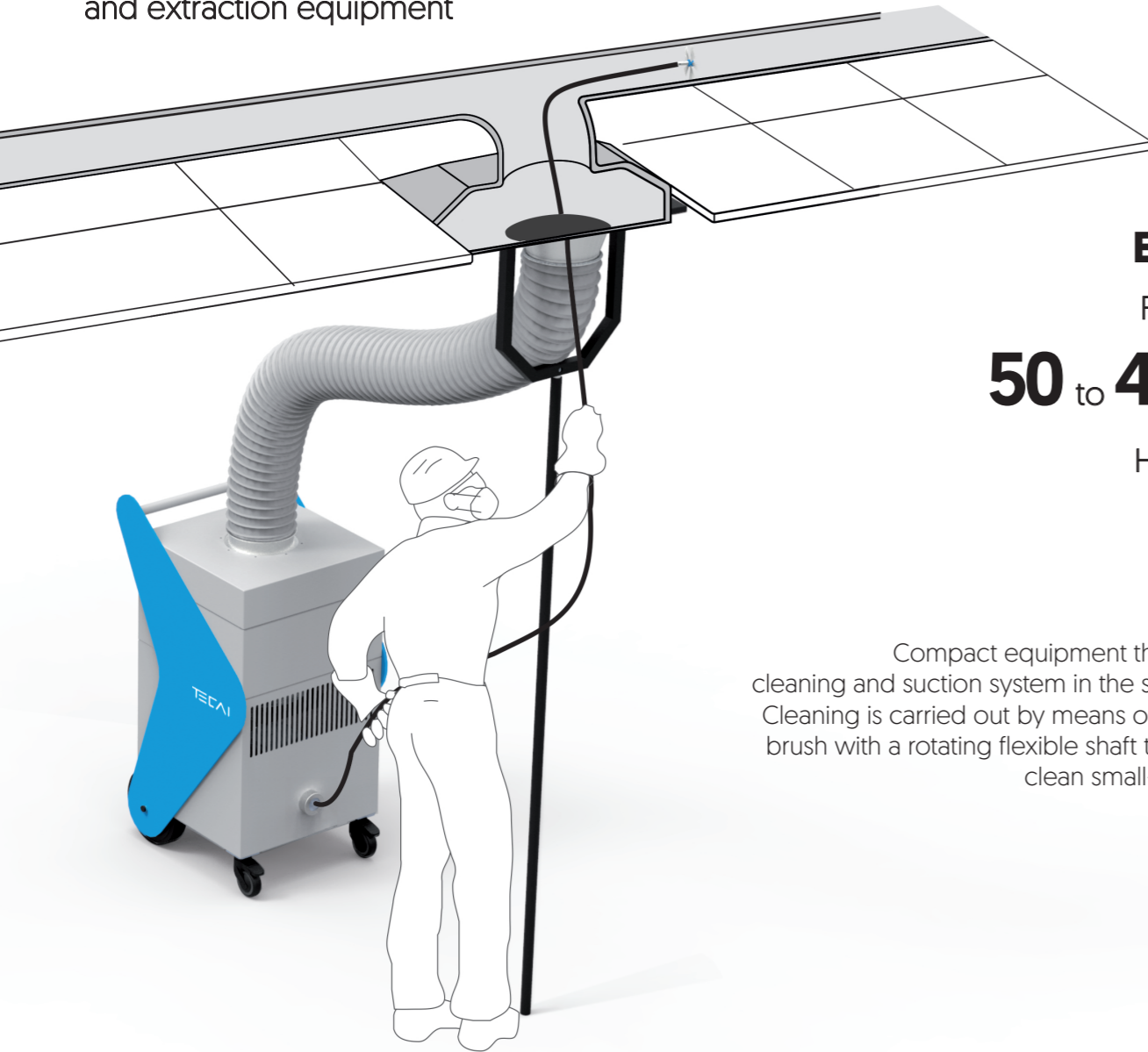


venet

Ventilation and air-conditioning duct cleaning and extraction equipment



ELECTRIC
For ducts of
50 to 400 mm
Hose length
10 m

Compact equipment that integrates a cleaning and suction system in the same machine. Cleaning is carried out by means of a mechanical brush with a rotating flexible shaft that allows it to clean small-section ducts.

INCLUDED ACCESSORIES ▼



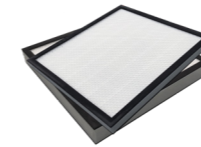
VACUUM HOSE.
Ø160 mm, 3,33 m of length
AC3101319



ADAPTER HOSE DUCT. Ø160 mm
AC3101404



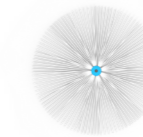
FLEXIBLE SHAFT WITH BAG.
10 m. Ø50-250 mm
AC3303614



F7 AND H13 FILTERS.
400 X 400 X 21. 1 unit.
400 X 400 X 46. 1 unit.

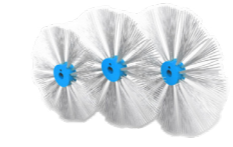


REMOTE CONTROL.
AC3303605

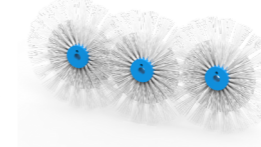


NYLON BRUSH.
Ø250 mm,
CP4000250

OPTIONAL ACCESSORIES ▼



PACK FINE NYLON BRUSHES.
Ø300 | 350 | 400 mm
CP2103040



PACK NYLON SQUARE DUCT BRUSHES.
Ø300 | 350 | 400 mm
CP2104055

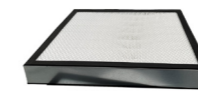


FLEXIBLE SHAFT.
15 m.
Ø300-400 mm
3303615

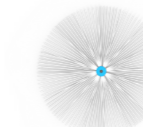
CONSUMABLES ▼



F7 FILTER.
400 x 400 x 21. x unids
AC1300007



H13 HEPA FILTERS.
400 x 400 x 46. x unids
AC1300013



NYLON BRUSH.
Ø250 mm,
CP4000250

TECHNICAL FEATURES

venet

Maximum power equipment:	230V-110V / 50 - 60Hz 0,7 kW // 0,94 HP
Maximum power consumption:	3 A
Suction power:	0,27 kW
Maximum suction flow rate:	1600 m ³ /h
Maximum depression:	600 Pa
Operating point:	1000m ³ /h a 450 Pa
Filtration level 1:	F7
Filtration level 2:	H13
Degree of separation:	>99 %
Aspiration hose:	Ø160 mm // 3 m / 9,84 ft
Brushing power	0,25kW
Brushing speed:	Adjustable 0 - 1000 rpm
Direction of rotation:	Right / Left
Control system:	Electric
Control panel:	Membrane keyboard
Brushing shaft:	Ø10 mm // 10 m / 32,8 ft
Noise level:	72 dB
Main materials:	Painted steel and HDPE
Dimensions: [L x W x H]	530 x 481 x 926 mm 20,87 x 18,94 x 36,46 inches
Weight:	50 kg // 110,2 lb