

fortex

Pneumatic brushing equipment for ducts in ATEX zones

The system uses compressed air to drive a powerful motor, housed in the end of a 30 meter long flexible hose.

It is the most reliable and robust tool for duct cleaning in ATEX zones.

- Powerful pneumatic motor [11.6 Nm max. torque] **necessary to drag all types of grease and dirt.**
- **30 meters** of semi-rigid hose that allows working vertically [even from bot tom to top], horizontally, and making 90° bends.
- **100% stainless steel** motor for durability and maintenance-free operation.

fortex

ATEX Characteristics



ATEX category of the equipment:

II2/3G
II2/3D

Equipment protection modes:

Ex h T135°C Db/Dc
Ex h T4 Gb/Gc

Minimum ignition temperature of substances:

135°C

Brushes

With different materials and sizes according to the need.

For ducts up to

1000 mm

Length of the flexible shaft

30 meters

Carrying handle

Easy handling for transportation.

Double direction of rotation

Left | Right

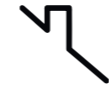
Shaft protector

Facilitates collection and protects of equipment while on the move





APPLICATIONS ▼



Chimney



Ducts

ACCESSORIES INCLUDED ▼



COMPRESSED AIR HOSE

8 meters.

AC3303101

OPTIONAL ACCESSORIES ▼

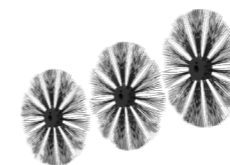


ATEX PNEUMATIC CENTERING DEVICE

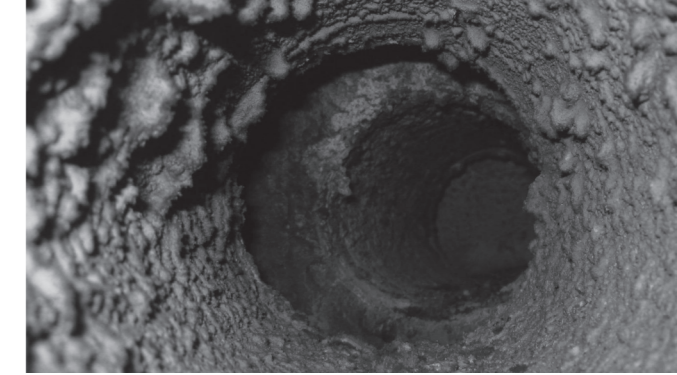
Ø 500mm a Ø 1000mm

AC3303134

FORTEX ANTISTATIC BRUSHES



Ø 250	CP3000250
Ø 300	CP3000300
Ø 400	CP3000400
Ø 600	CP3000600
Ø 700	CP3000700
Ø 800	CP3000800



TECHNICAL CHARACTERISTICS **fortex**

Motor power supply [Maximum power]:	Compressed air 300l/min-6,3bar// 10,6cfm-6,3 bar
No-load rotation speed:	500 rpm
Rotation speed at maximum power:	236,7 rpm
Torque at full power:	6,5 Nm // 57,5 lbf.in
Minimum starting torque:	8 Nm // 70,8 lbf.in
Par drowing:	11,6 Nm // 102,7 lbf.in
Sound level:	Less than 70 dB
Direction of rotation:	Right / Left
Control system:	Pneumatic
Control panel:	Valves
Dimensions:	1025 x 1162 x 430 mm 40,35 x 48,98 x 16,93 inches
Weight:	67 kg // 147,71 lb
Hose length:	30 m // 98 ft
Structural material:	Stainless steel and HDPE