



LisePro-V Series

Vertical Wind Turbine Brochure
LisePro-v 5 kW



LisePro-V Series

LisePro wind turbine SINCE 1988
lisepro.com



Specification

Generator Type:	Three Phase Permanent Magnet
Rotor Height:	4.8 m (15.7 ft)
Rotor Width:	4.5 m (14.8 ft)
Turbine Weight:	500 kg (1102.3 lbs)
Blade Material:	Aluminum Alloy
Blade Quantity:	3 pcs
Working Temperature:	-20 °C to 50 °C
Design Lifetime:	20 years

Performance

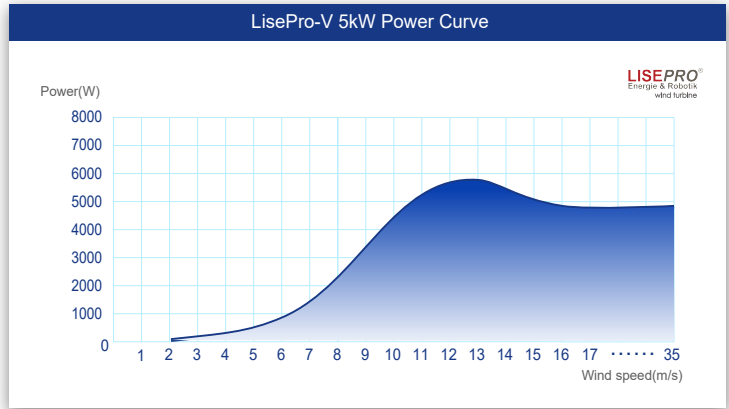
Rated Power:	5000 W
Max Output Power:	6000 W
Cut In Wind Speed:	2.5m/s (5.6 mph)
Rated Wind Speed:	11m/s (24.6 mph)
Survival Wind Speed:	52.5m/s (117.4 mph)
Generator Efficiency:	96%
Noise Level:	< 45 dB(A)
Warranty:	5 years

Safety

Blades RPM Limitation:	150 RPM
PWM Dump Load:	7.5kW Box
Electrical Brake:	Auto/ Manual
Auto Hydraulic Brake System	Auto/ Manual

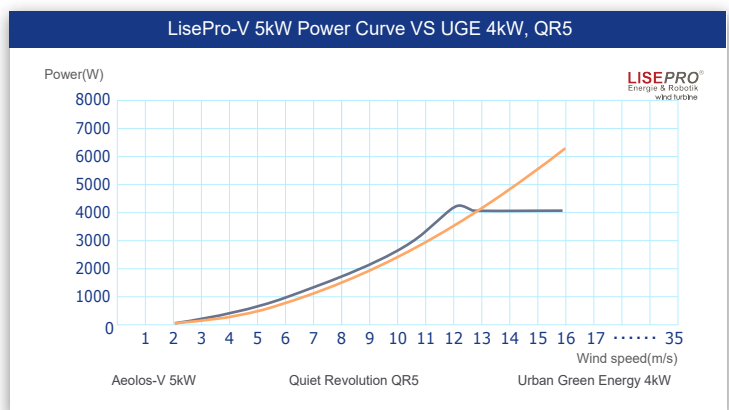
Optional

Remote Monitoring System (Internet/ Wireless)	
Off Grid:	48/ 96 V
Grid Tied:	360 V



LisePro-V 5kW Wind Turbine Annual Energy Output

Wind Speed(m/s)	Annual Energy Output(KWh)
3 m / s	2296 kWh
4 m / s	5145 kWh
5 m / s	9247 kWh
6 m / s	13933 kWh
7 m / s	18466 kWh
8 m / s	22442 kWh
9 m / s	25753 kWh
10 m / s	28447 kWh
11 m / s	30621 kWh
12 m / s	32376 kWh



5 YEAR WARRANTY



LisePro-V Series

LisePro wind turbine SINCE 1988
lisepro.com



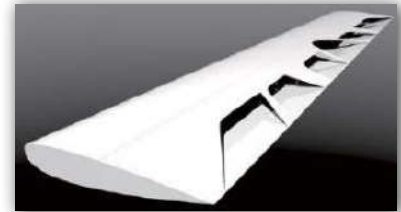
Why Choose Lisepro-V 5 kW Wind Turbine?

Triple Safety Protection

Special Blade Design: LisePro blades use the special aerodynamic design which limits the max rotating speed to 200 rpm even the wind speed is 30m/s or 40m/s. It is safer and more reliable than traditional vertical axis wind turbine.

PWM Dump Load: LisePro-V 5kW wind turbine has the 7.5kW dump load box with PWM loading function. This will consume the over power output and control the voltage in strong wind speed.

Mechanical Brake: The manual mechanical brake can stop the windturbine for maintenance or typhoon coming. We have the auto mechanical brake system for remote installation site without people checking as optional fuction.



High Efficiency

Low Cut-in Wind Speed: LisePro-V 5kW could start up with 1.5m/s wind speed and has the power output in 2.5m/s to inverter. This is more efficient than the vertical wind turbines with a 3.5m/s or even 4.5m/s cut in wind speed.

More Annual Energy Production: According to EN61400-2(IEC 61400-2) standard, LisePro-V 5kW annual output is 9247kWh at 5m/s wind speed. The annual output at 10m/s is 28447 kWh.

MPPT Charger for Off Grid: LisePro-V 5kW uses 48V/96V MPPT charging controller to increase the charging efficiency to 94%. It can charge the battery bank when wind speed is above 3.0m/s.



5 YEAR WARRANTY





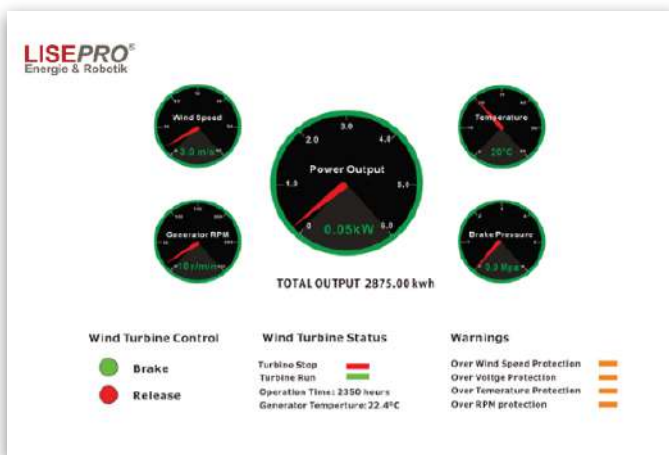
LisePro-V Series

LisePro wind turbine SINCE 1988
lisepro.com



Intelligence Control

Remote Monitoring System: Customer can remote monitor the wind turbine operation, wind speed and power output in office, home, airport and anywhere through the internet.



Auto Hydraulic Brake System: It is suitable for the remote installation sites, like the island, telecommunication tower station which does not have people checking and monitoring. This system can auto stop the wind turbine in over voltage, over wind speed, generator over temperature and all any other faults. It can auto release the wind turbine to run after the abnormal warnings.



5 YEAR WARRANTY





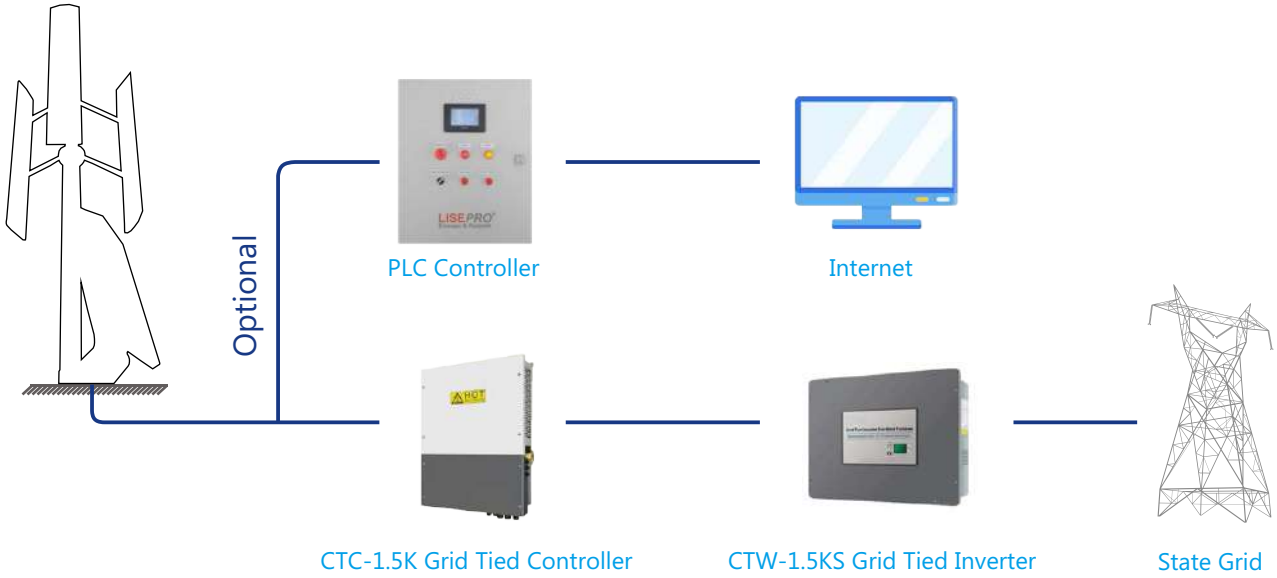
LisePro-V Series

LisePro wind turbine SINCE 1988
lisepro.com

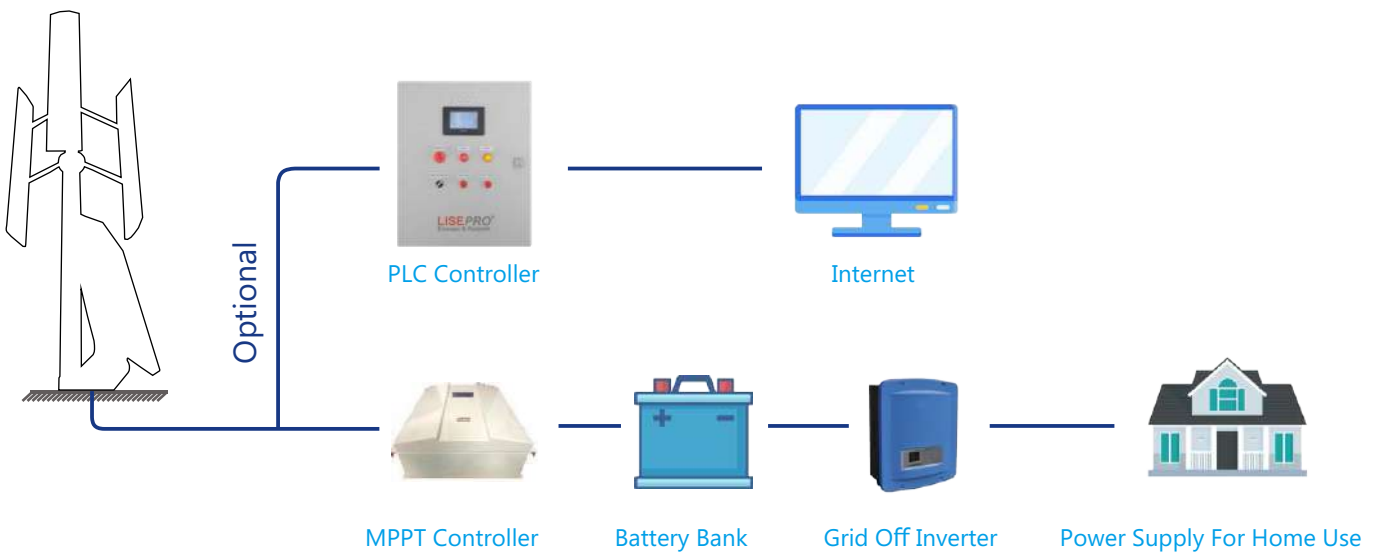


Wiring Diagram

Grid-on



Grid-off



5 YEAR WARRANTY

