



DM SERIES

Roll to Roll Transfer Printing Machine

diferro[®]
Calenders



PRODUCT INFORMATION

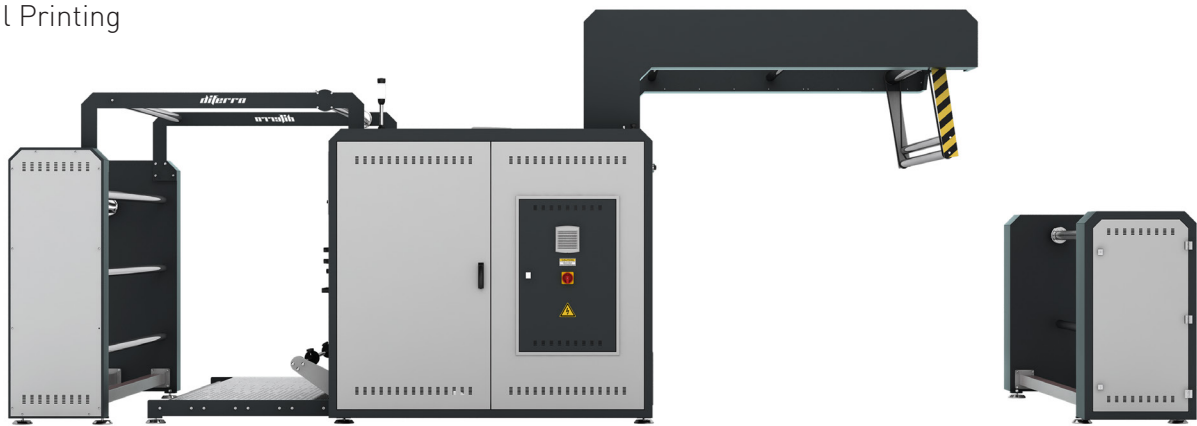
Our latest “DM” Series has evolved and now includes many unique new features. Diferro have created a truly cost effective machine that is not only built to last, but also offers multiple configuration choices and the performance required for an efficient high-speed print finishing experience. Although it is mainly used for textile transfer printing, it can also be used for other heat transfer operations.

OPERATION TYPES

- Digital Paper Rolls to Rolls of Fabric

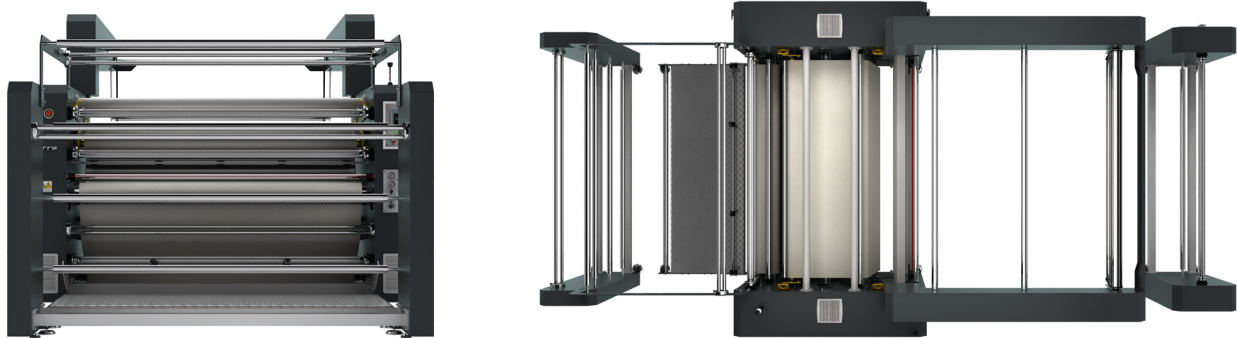
OTHER SCOPE OF USE

- Film Lamination
- Foil Printing



THE DRUM

The drum is made of ST44 drawn steel pipe and all standard models are finished with surface grinding. On request the drum surface can also be plated with either chrome or Teflon. Inside the drum is one single heating unit that consists of three pieces. The drum is filled with transfer heating oil that fills up 60% of the inner volume. The failsafe-switch mechanism helps balance the inner pressure, and will deactivate the machine should there be any issues regarding the gasses generated by heated oil so to avoid injury or damage. The heat sensor is placed on the surface of the drum, this enables more accurate readings and provides better print results. Maximum Working Temperature and Temperature Restrictions can be easily adjusted via the Touch-Screen Panel.

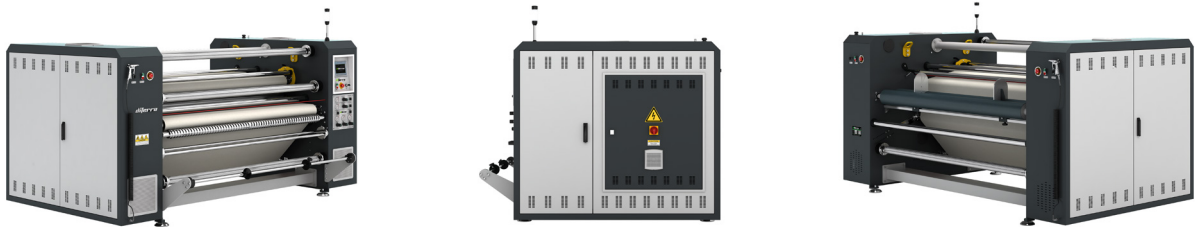


THE FELT BELT

All of our machines are equipped with 100% Nomex seamless industrial felt belts that are reinforced with Kevlar material in order to avoid stretching. The expected lifetime for the belt on this unit is between 3 & 5 years depending on use. In order to eliminate movement of the felt belt to either side the machine is built with an automated-felt centering mechanism. The felt tension and the felt centering system are both air-operated (Pneumatic). Should the compressor fail to supply the required air for the system, the machine halts and alerts the operator to prevent lasting damage to the belt.

OTHER FEATURES

- Fabric cooling and seal cooling fan
- Shading remover paper separator system
- Scraper system to keep paper or fabric easy and not to rewind back to the cylinder



TOUCH-SCREEN PANEL

- General control of the machine such as speed, temperature etc.
- Meter Counter
- Weekly Programming
- Auto- Cooling
- Touch-screen to Access various functions

MATERIAL INPUT / OUTPUT CONTROLS

Protection Paper

Input : Pneumatic Brake System

Output : Manually Adjusted Automatic Rewind

Digital Paper

Input : Pneumatic Brake System

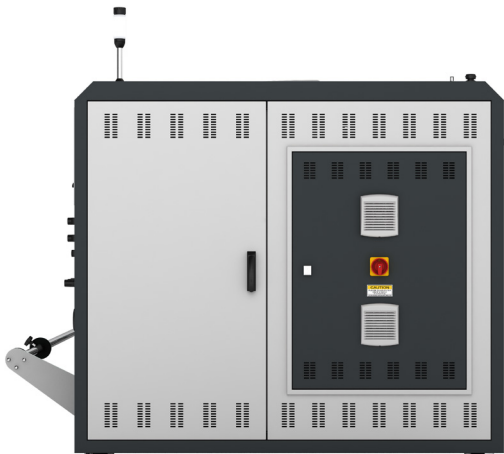
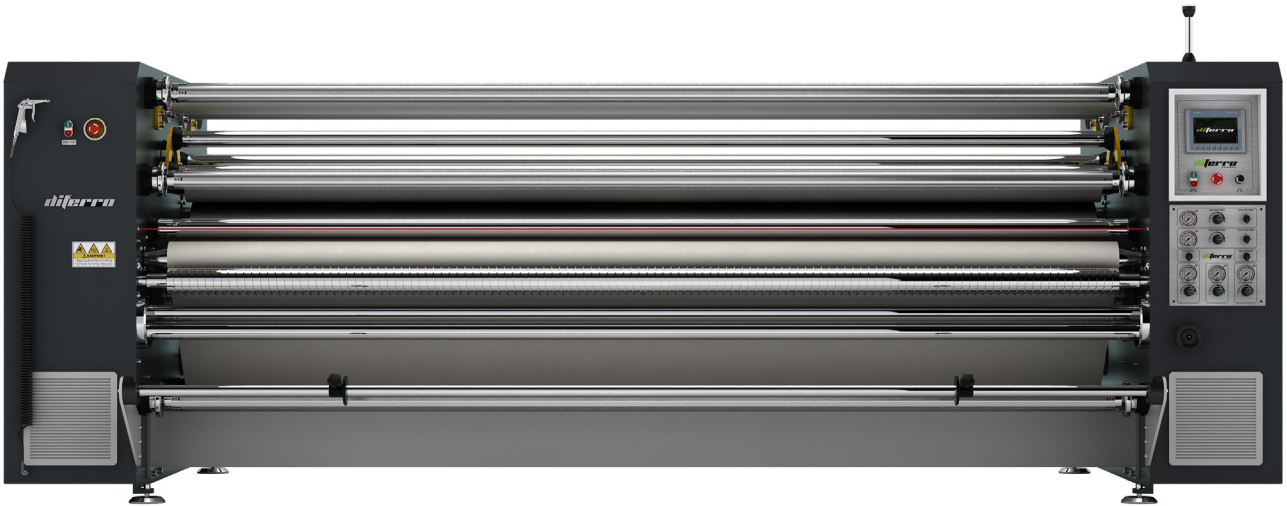
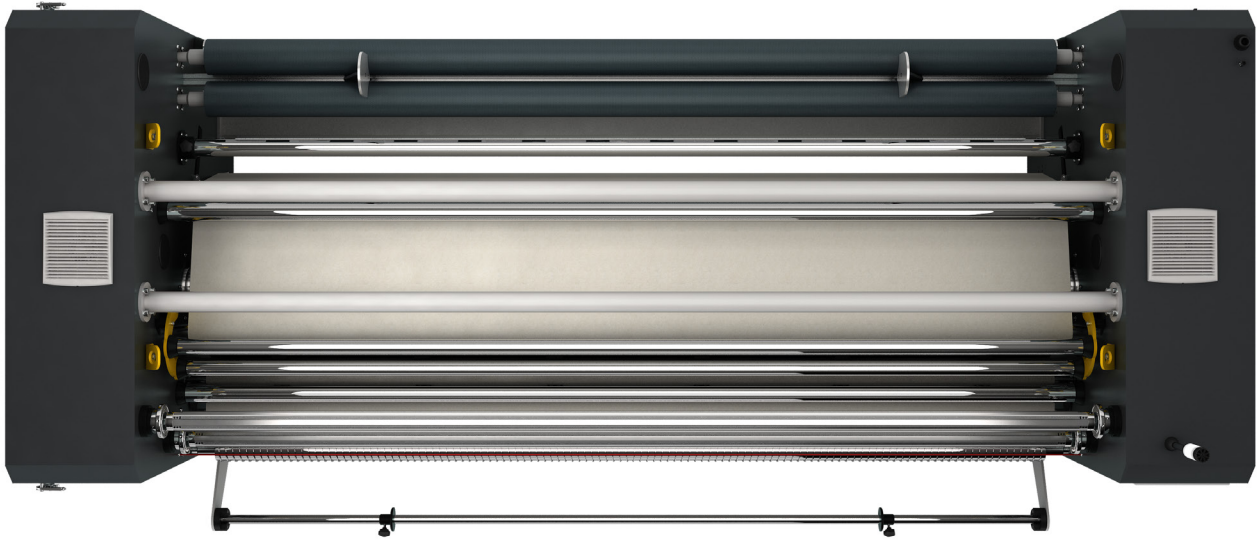
Output : Manually Adjusted Automatic Rewind

Roll Fabric

Input : Manually Adjusted Fabric Tension System

Output : Potency Controlled Double Roll Rewind





STANDARD AND CUSTOMIZED MACHINE SOLUTIONS





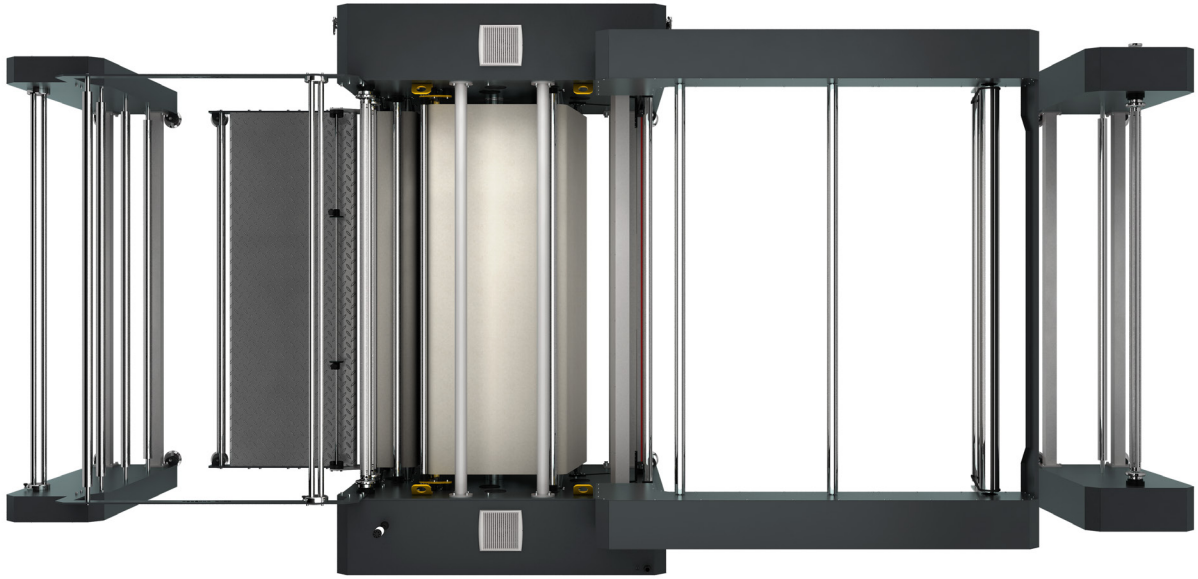
TECHNICAL SPECIFICATIONS

Heating System	: Heat Transfer Oil
Max. Temperature	: 220°
Average Heating Time	: 80 min.
Average Cooling Time	: 150 min.
Power Supply	: 380 V – 3 Ph 50/60 Hz
Air Intake (bar)	: Min. 5 – Max. 8
Electrical System	: PLC Control
Felt Tension System	: Pneumatic
Felt Control System	: Automatic
Drive Speed Control	: AC Inverter
Paper Un-wind Re-wind	: Compressed Shaft
Weekly Programming	: Yes
Automatic Shut-Down	: Yes
Safety	: 4 Emergency Buttons – Safety Wire
Software Language	: English (Optional)
Warranty	: 2 years Mechanical, 1 year Electrical (User Fault Exempted)

OPTIONAL OPTIONS

- 1 Fabric Straightener Rod
- 2 Static Preventing Wire
- 3 Remote Access Module
- 4 Air-Shaft
- 5 Pneumatic Crushing Roll
- 6 External Roll Fabric Rewind Unit
- 7 Additional Digital Paper Roll
- 8 Chrome or Teflon Plated Drum
- 9 UPS Power Supply
- 10 Fabric Laying Unit



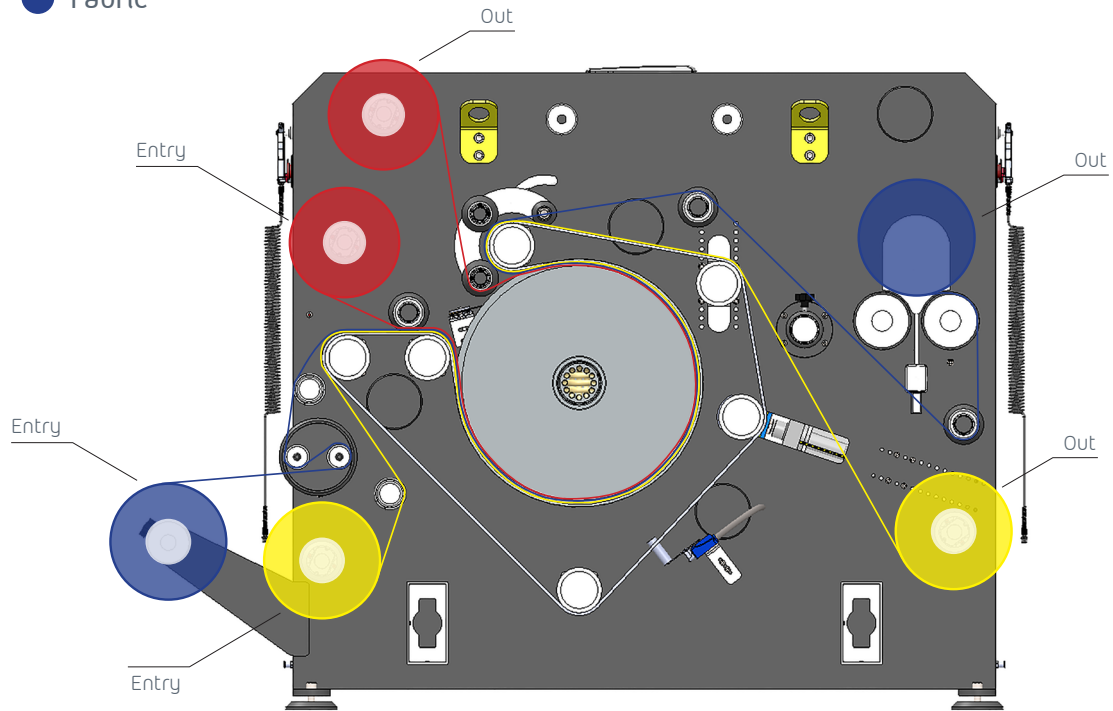


DM SERIES

Machine	Drum Diameter		Drum Width		Maximum Working Width		Working Data			Maximum Current Input	Total Power	Average Energy Power	Drum Resistance Power	Drum Engine Power	Dimensions (Footprint with Table)	Net Weight	Dimensions of the Shipping Crate	
	Code	mm	inch	mm	inch	mm	m/min	m/hour	m ² /hour								Amp.	Kw
DM-19B400C	400	31.5"	1900	74.8"	1840	2,64	158,4	291	51,7	34	22,1	31,5	1,5	315x200x170	3700	340x225x205	4070	
DM-22B400C			2200	85.6"	2140	2,64	158,4	339	62,4	41	26,65	38,5	1,5	335x200x170	4050	360x225x205	4455	
DM-26B400C			2600	102.3"	2530	2,64	158,4	401	83,7	55	35,75	53	1,5	375x200x170	4770	400x225x205	5247	
DM-33B400C			3300	129.9"	3210	2,64	158,4	508	115,6	76	49,4	73	2,2	445x200x170	6000	470x225x205	6600	
DM-19B600C	600	23.6"	1900	74.8"	1840	4,34	260,4	479	66,9	44	28,6	41,5	1,5	315x200x155	3050	340x225x190	3355	
DM-22B600C			2200	85.6"	2140	4,34	260,4	557	68,5	45	29,25	43	1,5	335x200x155	3350	360x225x190	3685	
DM-26B600C			2600	102.3"	2530	4,34	260,4	659	100,4	66	42,9	63	2,2	375x200x155	3830	400x225x190	4213	
DM-33B600C			3300	129.9"	3210	4,34	260,4	836	130,8	86	55,9	83	2,2	445x200x155	4950	470x225x190	5445	
DM-19B1000C	1000	39.4"	1900	74.8"	1840	6,50	390	718	108,0	71	46,15	68	2,2	315x200x185	4350	340x225x225	4785	
DM-22B1000C			2200	85.6"	2140	6,50	390	835	118,6	78	50,7	75	2,2	335x200x185	4780	360x225x225	5258	
DM-26B1000C			2600	102.3"	2530	6,50	390	987	144,5	95	61,75	90	2,2	375x200x185	5600	400x225x225	6160	
DM-33B1000C			3300	129.9"	3210	6,50	390	1252	184,1	121	78,65	116	4	445x200x185	7050	470x225x225	7755	

SUBLIMATION PROCESS

- Protection Paper
- Digital Paper
- Fabric

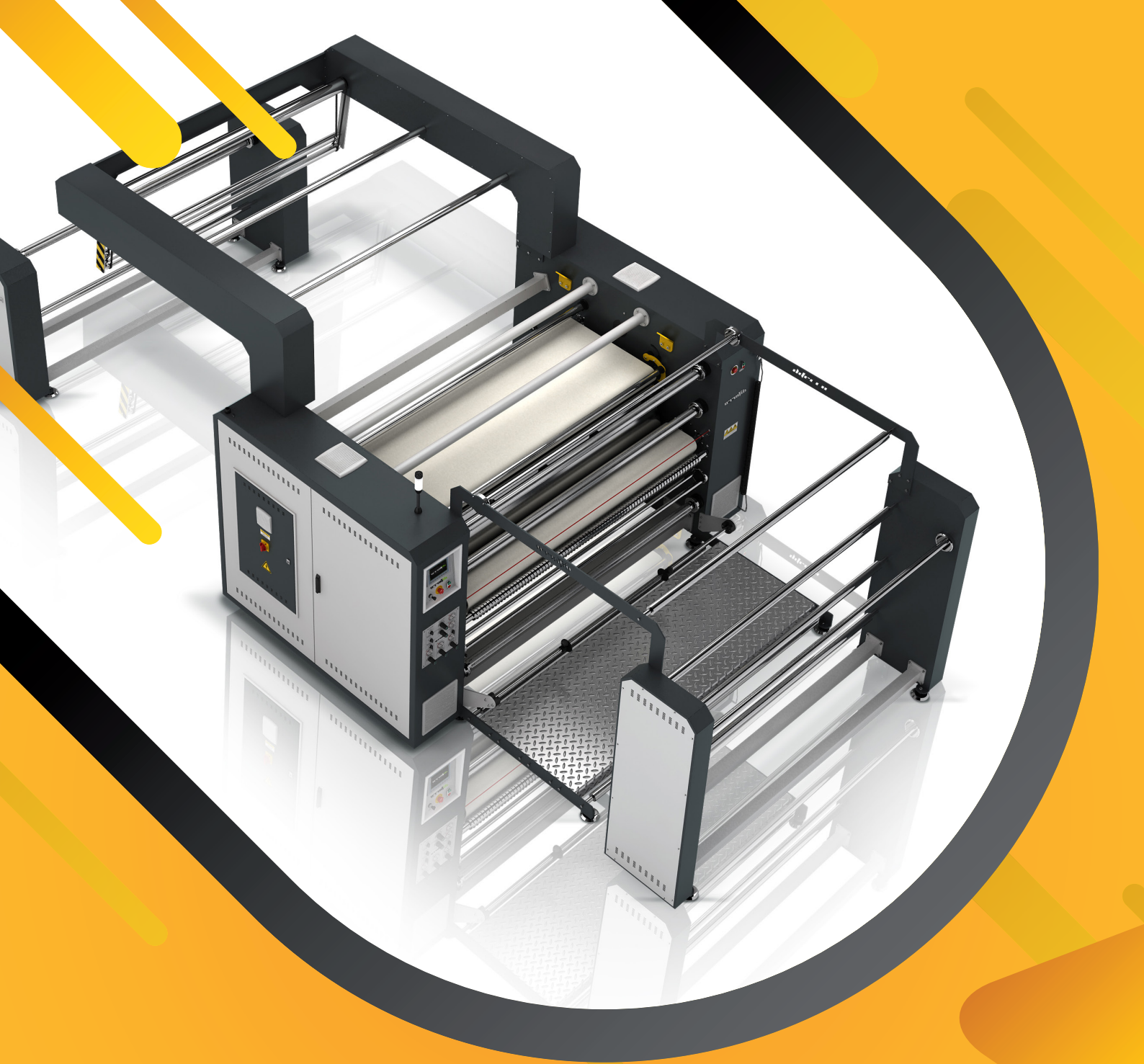


SCOPE OF APPLICATION



SCOPE OF APPLICATION





diferro[®]
Calenders

Diferro Makina San. ve Tic. Ltd. Şti.

A. Sinpaş İş Modern 2. Kısım B-Blok
No: 16 BAŞAKŞEHİR / İSTANBUL

T. +90 212 608 08 08

F. +90 212 608 04 40

E. info@diferro.com.tr



www.diferro.com.tr



facebook.com/diferrocalenders



twitter.com/DCalenders



instagram.com/diferrocalenders