



S40
Style & Performance



SonoScape Co., Ltd.

Yizhe Building, Yuquan Road, Shenzhen, 518051, China

Tel: +86-755-26722890 Fax: +86-755-26722850 E-mail: market@sonoscape.net

www.sonoscape.com

As it is our mission, SonoScape has been committing to provide the world high standard ultrasound scanners, from the world's first 15" LCD portable color system in 2003, to the Red dot Award winner in 2011, SonoScape is always at the front line of ultrasound field. Meet SonoScape S40; combining the new image technology of SonoScape and outstanding ergonomic design, it represents the new standard of SonoScape S series. With the innovative new platform of SonoScape, S40's 2D, 3D and 4D image performances have achieved a new level. A 19" LCD screen with articulated monitor arm, gel warmer and multiple choices of transducers, ensure the maximum comfort for both doctors and patients .

S40

Style & Performance



Premium Image Technologies



Futuristic ergonomic design

Front and rear handles

Handles on both front and rear make S40 easy to be transported.

User-oriented keyboard

Most frequently used keys are located around the track ball.

19 inch LCD monitor

Large high-resolution monitor increases diagnoses confidence and reduce eye strain.

User-define system

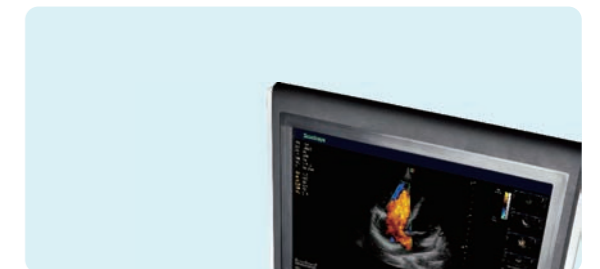
S40 allows its users to define their own favorite keys and diagnose modes.

Articulated monitor arm and control panel

Easily adjustable monitor arm from up to down and side to side, the control panel is also adjustable from four directions, S40 meets your best ergonomic comfort.

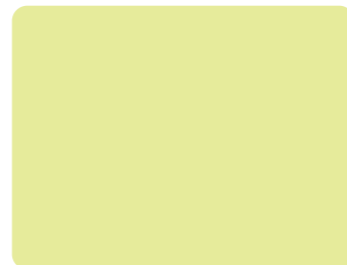
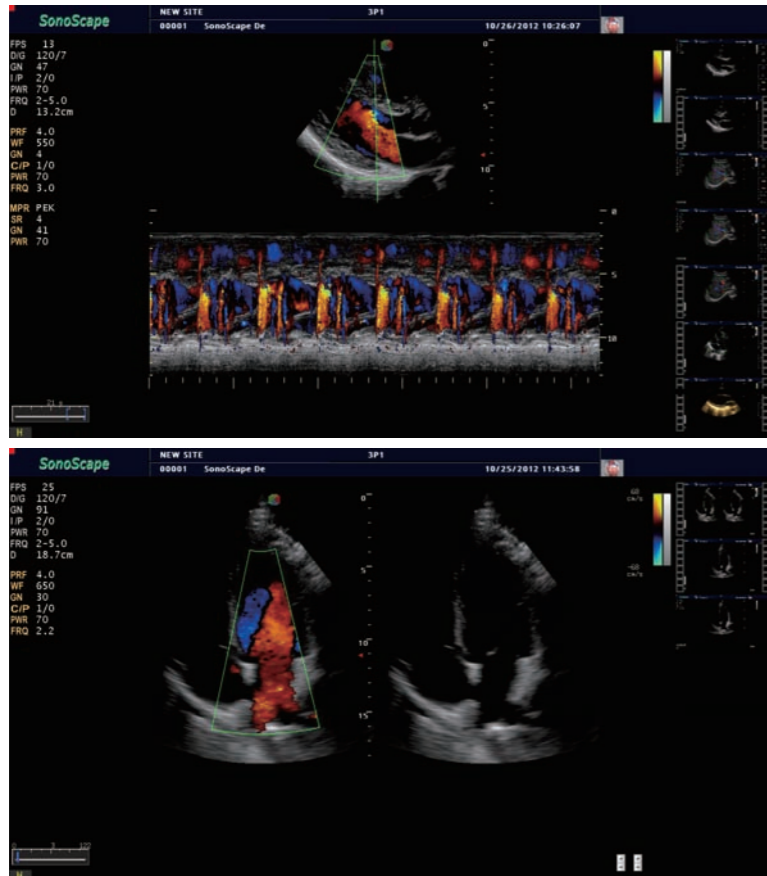
Super noise reduction

Although S40 is big and powerful, thanks to the noise reduction technology, it provides the quietest diagnose environment among SonoScape ultrasound family.



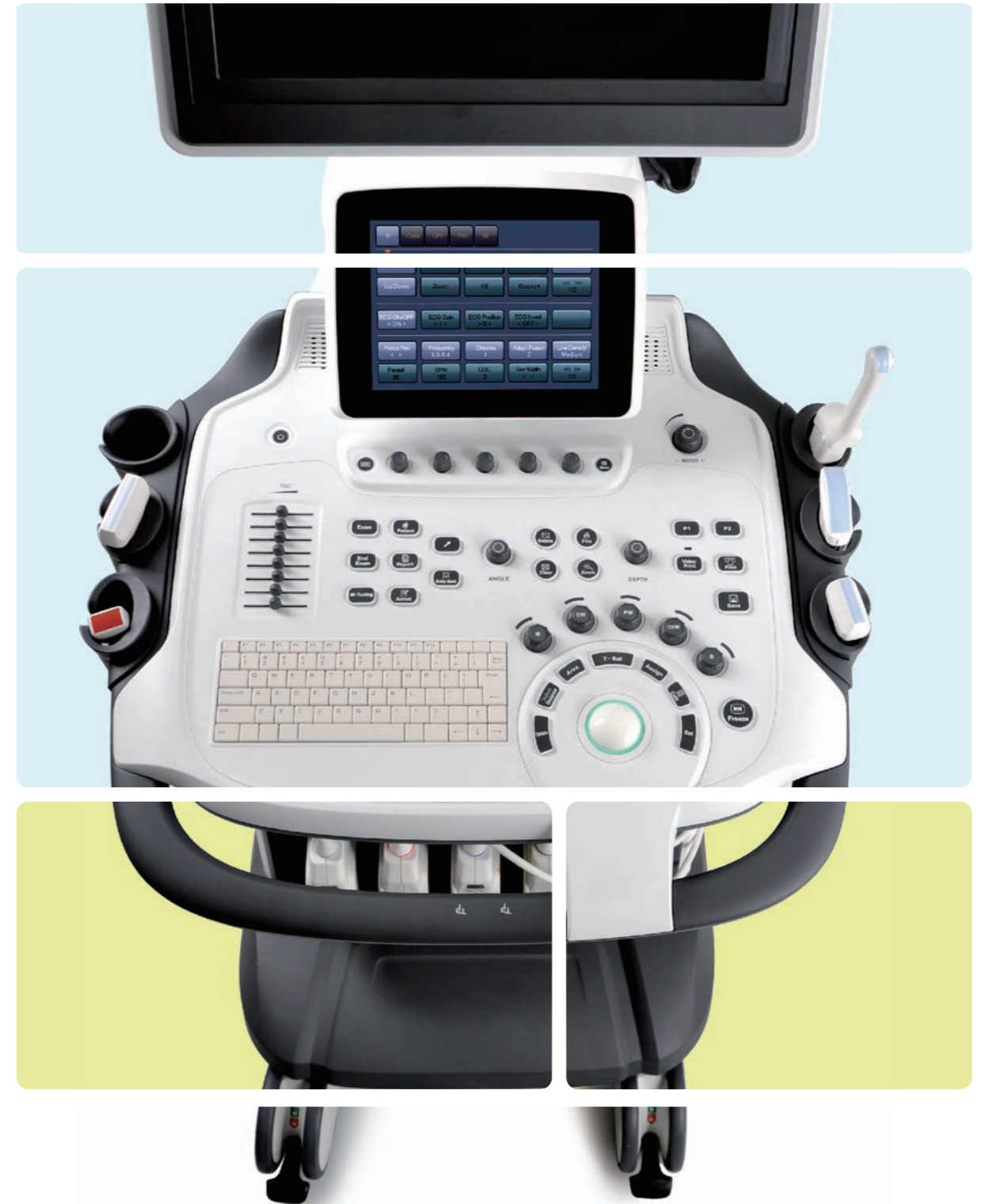
Cardiology

Forged with extended physical channels and SonoScape cardiac technologies, S40 enables doctors the confident and convenient diagnose, and combine with the sufficient measurement tools, all these ensures accurate diagnosis and provide patients the best treatment solutions.



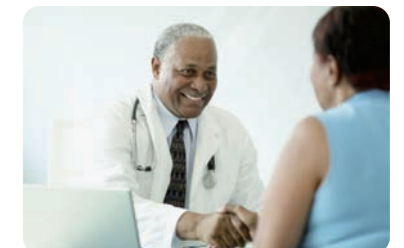
High Density Probe

S40 can provide high density phased array probe to meet the needs for both high frame rate and premium resolution in the cardiac imaging. Thanks for the high sensitivity of color Doppler mapping of SonoScape, S40 shows accurate cardiac diagnosis beyond your imagination.



Stress Echo

Stress echo package with fully integrated and easily programmable interface to customize your needs. All features combine with S40, to deliver streamlined workflow for wall motion scoring and reporting.



Radiology

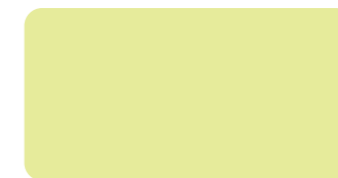
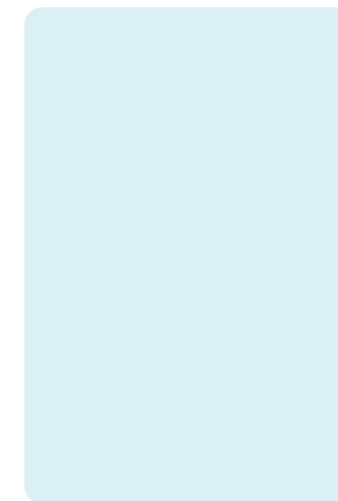
SonoScape's commitment to long-term R&D is motivated by continued technological achievements in high-resolution images that offer the most precise diagnosis for user.

The integrated workflow considers diagnosis environment that enables users to diagnose at optimal efficiency.



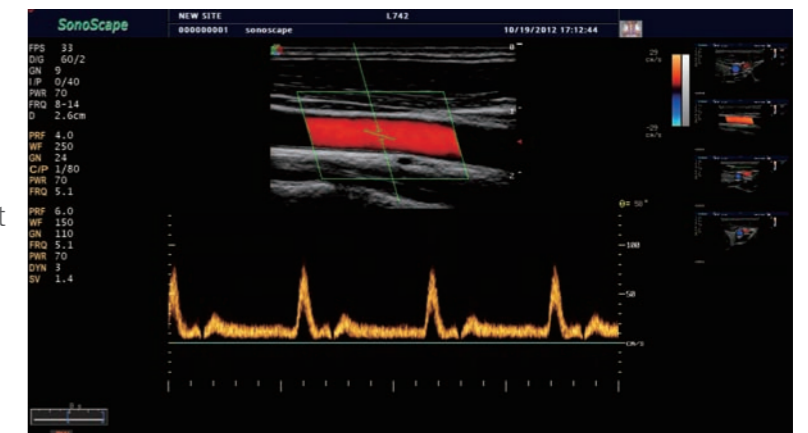
Elastography

S40 endows with the new method to support the sonographers in assessing tissue elasticity. The differences in tissue responses are detected and visualized in real-time by the elastography algorithms through different graphical representations.



Panoramic image

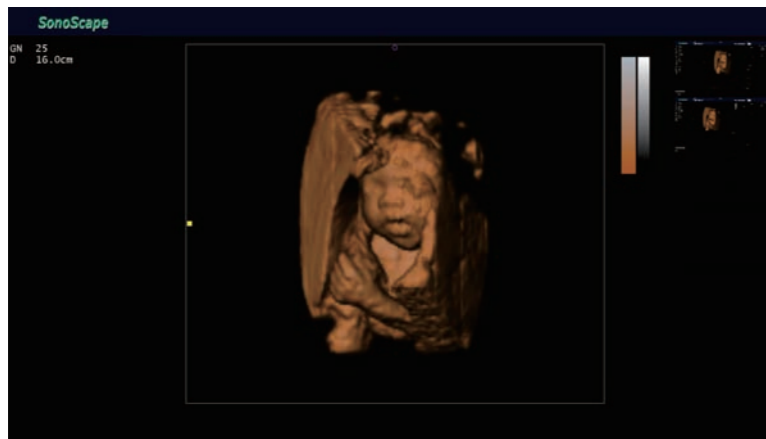
The S40 provides real-time panoramic imaging for bulky organs and masses for ease of measurement and diagnostic efficiency, rapidly generating accurate information on the position of lesions.



OB/GYN

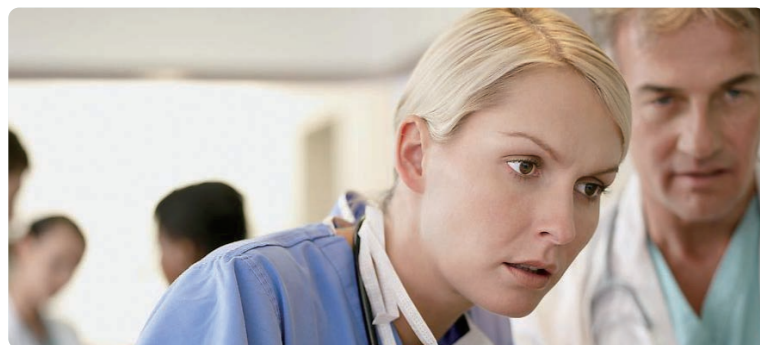
Real-time 3D (4D)

Deliver smooth real-time 3D experience. With increased physical channel and new platform on S40, both image quality and frame rate meets a new standard of SonoScape S series. Improved image quality increases the satisfaction of obstetric patients and improves diagnostic confidence. High frame rate delivers smooth movement of fetus in real-time 3D.



Endovaginal 3D/4D probe

Detects the finest details earlier in the first trimester and in gynecology exams, enhancing your diagnostic confidence. Except for the quality of 3D/4D, S40 also allows excellent 2D imaging under endovaginal 3D/4D diagnose, which increases the diagnostic capacity and the satisfaction of the obstetric patients.



Patients-oriented endovaginal probe

S40 reduces the uncomfortable and ensure the safety for gynecology patients. 200 degree wide angle: high density and up to 200 degree endovaginal probe provides the best image for doctors. Not just increase the diagnose confidence but also reduce the uncomfortable of the patients. Temperature detection function: this function will turn off the diagnose automatically when the temperature inside the patients is above normal. It ensures the safety of patients though out the whole diagnose. Ergonomic design: this user-oriented design makes S40's endovaginal probe to be easily hold, and its specially designed angle provides convenience and confidence when doing biopsy.

