



## Offer for Material Preparation Machine Solution

# ALEMİNSAN MAKİNA DANIŞMANLIK LİMİTED ŞİRKETİ

İstanbul Tuzla Mescit Mahallesi İlim Sokak No: 1 Aleminsan

Tel: 0902163943132

Fax: 0902163943428

Web: [www.aleminsan.com.tr/](http://www.aleminsan.com.tr/)

E-mail: [ya@aleminsan.com.tr](mailto:ya@aleminsan.com.tr)



**ALEMİNSAN MAKİNE**  
www.alemsan.com.tr

Yafes ALEMİN  
CEO

T: +90 216 394 31 32  
G: +90 532 795 55 89  
F: +90 216 394 34 28  
Mescit Mah. İlim Sk. No: 1 Orhanlı  
Tuzla / İstanbul / Türkiye









NİMELA

ALEMİN

SilverEngineer



WONSTEN  
SOLUTION FOR BEST BENDING TUBE FABRICATORS



SINOPED  
hong da qi ye



LIKE  
LASER



JOT Group



SHINE STRAW



Yafes ALEMİN  
Genel Koordinatör



ZHANG



Genyond



RUIDA



JINYI



HANYOO



JOYWELL



Yong'tai



FRONTECH



苏州梯度机械有限公司  
SUZHOU DEEDO MACHINERY CO.,LTD

Gsm: +90 (532) 795 55 89  
e-mail: yafes@nimelamakine.com  
Web: www.nimelamakine.com

Wechat



Brands We Distribute



Whatsapp



KANEPE VE KOLTUK MEKANİZMALARININ  
SİSTEMLERİ

Kanepe ve Malya Mekanizmaları  
Sofa and Furniture Mechanisms  
Sofa and Malya Mechanisms



SOĞUK TEL ÇEKME  
SİSTEMLERİ

Orhanlı Kiyık Mezarlık Yolu Mezarlık Cad.  
No:11 Tuzla / Orhanlı - İSTANBUL/TÜRKİYE



SOĞUK ÇEKME  
LAMA

www.alemsan.com.tr  
yafes@alemsan.com.tr

SilverEngineer

ALEMİN

NİMELA

RUIHAI

瑞海机械有限公司  
RUIHAI MACHINERY CO.,LTD.







## Company Introduction

---

**ALEMİNSAN MAKİNA DANIŞMANLIK LİMİTED ŞİRKETİ** is a professional manufacturer and supplier of pharmaceutical and chemical machinery and equipment in China. We belong to ALEMİN SAN International Group.

We have a well-experienced team to manufacture pharmaceutical machinery and equipment and a professional design institute. With rich experience in pharmaceutical machinery and equipment field and numbers of professional engineers, we have designed and developed many types of machinery and equipment in many varieties.

In the past years, we have made great achievements due to our good credit and service. We have established long-term business relations with many customers and some of our overseas customers have appointed us to be their purchase agency in China. Our products are exported to many countries & areas, such as Korea, India, Indonesia, Pakistan, Thailand, Vietnam, Iran, Japan, Denmark, Romania, Bulgaria, Russia, South Africa, Nigeria, the USA, Australia, Canada, Argentina and Chile Etc. Besides machinery and equipment, we also supply production lines, turn key projects and know-how.

In ALEMİN SAN you can get your desired goods with the best prices and good quality. We welcome your inquiries from at home and abroad

<b>FROM:</b>	ALEMİNSAN MAKİNA DANIŞMANLIK LİMİTED ŞİRKETİ
<b>COUNTRY:</b>	Turkey

# **1. SINO-100 Softgel Capsule Production Line**



## **A. Colloid Melting System**

### **Electrical heating colloid melting tank**

Electrical heating is adopted, easy operation, less occupied area and quick heating speed.





Technical parameters

Accepted specification	Design requirement
Outside surface	SUS304, 1.5mm wiredrawing treatment for the surface
Motor	2.2kw, Standard worm wheel gear motor
Motor's housing	SUS304 , 1.5mm wiredrawing treatment for the surface
Internal layer (contacted with material)	SUS304,6mm surface polishing treatment 0.4 grade
Outside layer (outside of the tank)	Sus304,4mm, surface polishing treatment 0.4 grade
Agitating blade	Sus304. surface polishing treatment 0.4 grade
Outlet sanitary ball valve	SUS304
Press on the heating layer	5mpa
Insulation layer	Polyurethane foam
Sight glass	10mm explosion-proof glass

Lamp	Explosion –proof light
Capacity	100L
Outside layer of the colloid melting vessel	Sus304 , 4mm, surface polishing treatment 0.4 grade
14.Inside layer of the colloid melting vessel	Sus304 , 5mm, surface polishing treatment 0.4 grade
Insulation layer	Polyurethane insulation
Electric appliance	Schneider
Pipeline’s straight jointing	Sus304
Vacuum pressure gauge	Pressure gauge, Shanghai
Electric control cabinet	Sus304. surface polishing treatment 0.4 grade
Screw	Sus304



## Water-circulation Vacuum Pump



SN-1.5B type water-circulation vacuum pump is used to extract gas from the colloid melting vessel during the colloid solution preparation, so make the vessel be vacuum, then produce the colloid solution without bubbles. It's max air flow is 1.5 m<sup>3</sup>/minute, the limit vacuum is 700mmHg, the rotary speed is 2860RPM, the motor power is 4KW, and the water's consumption is 8-12L/minute.

**B. Pelleting system**

**SINO-100 type pelletng machine (Capacity 8000-10000 Pcs/Hour)**



SINO-100 type mould-rolling soft capsule machine is a kind of new model according to SINO-100 model's performance & customer's requirement, with advanced design technician and information, and conform to GMP standard. With 220V power supply, it is mainly used for the soft capsule's developing in those small scale manufacturers or pharmaceutical research institute with the following characteristics:

- horizontal colloid feeding is adopted. All units can be controlled independently, and it's easy to adjust.
- Pneumatic pressing is used for mould-rolling's pressing, with digital display, it's easy and quick, so postpone mould's service life.
- Colloid film's lubricant quantity can be controlled to the micro level, no need alcohol or petroleum ether to clean, so avoid any dangerous when cleaning, so reduce the production cost.
- Have accurate adjusting for colloid layer's thickness.
- All parts' surface which is contacted with the inner substance, gelatin solution or gelatin film is smooth and clean, so it's easy to clean and disinfect.
- Left/right axis' jumping of soft capsule machine's head is less than  $\pm 0.03\text{mm}$ . There is no blocking when pressing the soft capsule machine head, and it's flexible to reset. When the pressing content is oil, rotary speed of the machine head is within 1~4R/minute, with perfect capsule's appearance. The mould's cutting is neat, the capsule's jointing is beautiful, and without any leakage. When pressing mixture or suspension of traditional Chinese medicine, rotary speed of the machine head is within 1~3.5R/minute, with perfect capsule's appearance. The mould's cutting is neat, the capsule's jointing is beautiful, and without any leakage.
- When pelleting, the hexagon square shaft of the tablet falling machine can work neatly. There is a rubber brush under the mould, which can clean tablet very well, and without mould's damage.
- During the pelleting, the gelatin belt's thickness can be adjusted by front/back turning the hand wheel. When there is thickness difference between the left and the right gelatin belt, adjust the front/back hand wheel of left/right gelatin box; When on the same side, there is thickness difference between the front and the back, just adjust the front/back hand wheel on the same side. During the pelleting, gelatin can be supplied automatically through the sleeving valve and the liquid sensor. When level is low, sensor will make a signal to control the sleeving valve to open, to supply gelatin. When level gets to the required limit, sensor will make a signal to control the sleeving valve to close to stop gelatin's feeding.
- Appearance of left/right rubber roller of the soft capsule machine should be smooth, without obvious scratch. The surface jumping of

the rubber roller should be less than 0.08mm. Its left/right gelatin rolling speed can be controlled directly on the touch screen. During the normal production, the gelatin belt is even and smooth both inside and outside.

- The refrigerating system is used to cool left/right rubber roller. The temperature of left/right rubber roller can be controlled between 10<sup>o</sup>C-20<sup>o</sup>C on the touch screen, to meet different requirement from the soft capsules' production. The refrigerating system includes outdoor refrigerating system and the inner condenser within the capsule machine. In the condenser, the cooling capacity is transferred to the liquid refrigerant, then to the left/right rubber roller through the pump. The sensor in the system is used to automatically control refrigerant's temperature, so to control the temperature of the roller.
- Loading precision of feeding pump is ±1.5%. Feeding pump's running is matched with mould's axis by 0~5R/minute, without abnormal vibration. The idiot design is adopted for the pump, and no need to adjust content's filling time.
- Capsules' qualified ratio is not less than 97%.
- When drying in the drying system, there will be no the soft capsule's scarification, crushing or leakage out of the cage.

**B-1 Specification**

Item	Technical direction	Remarks
Type of the sealed content	Liquid or ointment	
Rolling mould's size	Φ64 × 100mm	
Rolling mould's speed regulation	0-5RPM	Steples speed varying
Speed varying method	AC frequency converting speed regulating	
Supplying quantity of liquid single-column plug	0-1.5ML	
The filling accuracy of finished product	± 1%	
Main motor	0.75KW 1400rpm	

Power of electric heating colloid transferring tube	~ 100W*2	
Power of the heating tube	220W*4 ( Distribution box ) 220W*2 ( Injector )	
Temperature control method	PID intelligent control	
Power supply	4P AC220V 50HZ	
Power consumption	About 11KW	Including the cooling unit, etc.
Overall dimension	1300X550X1350(h)mm	
Weight	500kg	

**B-2 Main parts and their function**

S.N.	Description	Function
1.	Main control system	Control and operation system
2.	Main shaft of the rolling mould	Supply power for pelleting
3.	<u>Mould</u>	Gelatin pearl's fusion
4.	<u>Fan</u>	Transfer the finished gelatin pearl into the drying & shaping cage.
5.	Frequency converter	Adjust the rotary speed of the main body



S.N.	Description	Function
6.	<u>Hub</u>	Water-cooling is connected with the air-cooling sytem, Gelatin can be cooled cleanly, quickly and evenly.
7.	<u>Oil roller</u>	Synchronous rotation by both left and right side, have doule-sides lubricating and the micro lubricating, and feed gelatin evenly.
8.	<u>Pill falling machine</u>	Peel off pill from the mould chamber and the screen
9.	<u>Gelatin auto-control system</u>	With level inductive probe, gelatin's feeding is auto-controlled according to the level.
10.	<u>Distribution box</u>	Keep gelatin solution be in the constant temperature, and adjust the thickness
11.	<u>Power distribution cabinet</u>	Safety, and avoid any accident.
12.	<u>Switch</u>	Control the relative parts
13.	<u>Pressure gauge</u>	Indicating compressed air's pressure
14.	<u>Pneumatic machine</u>	Realize pneumatic pressing, and protect mould.

Mould-rolling type soft capsule machine is designed and made according to the National Pharmaceutical Machinery Industries the standard JB20027-2004. Making material conform to the current industries standard and its design, manufacturing, installing, operating, cleaning and maintenance conform to GMP standard.

**B-3 Materials**

Main body's material			
S.N.	Item	Aluminium alloy	Stainless steel 304
1	Outside surface		(Have wiredrawing treatment to the surface) 1.5mm
2	Back plate of the main body		(Have wiredrawing treatment to the surface) 2.0mm
3	Inner cabinet		45# steel
4	Funnel		(Have wiredrawing treatment to the surface) 1.5mm
5	Pill feeding machine		(Have wiredrawing treatment to the surface) 1.5mm
6	Mould	Left/right rolling mould	
7	Outside plate of automatic feeding machine		(Have wiredrawing treatment to the surface) 1.2mm
8	Gelatin's recovery box		(Have wiredrawing treatment to the surface) 1.2mm
9	Drying & shaping cage.		(Have wiredrawing treatment to the surface) 1.5mm
10	Screw		Stainless steel

#### **B-4 Some parts' detailed parameter**

##### Control method

- a. PLC intelligent touch screen , with following control units:
- b. Total power switch
- c. Switch of lubricating pump
- d. Total switch of electric heating
- e. Switch of refrigerator
- f. Switch of fan
- g. Switch of dring & shaping drum
- h. System switch of main driving & controlling

##### Pneumatic mechanism

Pneumatic machanism is used for mould's pressing, including 2 sets of cylinders, rotary switch, (Airtac) pneumatic tube and (Airtac) joints.

Airtac brand aluminium alloy mini cylinder:

Model : SSA 50X15

Pneumatic mechanism is fixed at the left outboard of the mould beam, one in the front and one at the back.

Pneumatic pressure gauge is fixed above the left/right oil roller.

Airtac model: Y-60 Pressure:0-1 MPa Grade : 2.5

Medium : Clean compress air. Parameter:0.2~0.7MPa.

##### Pearl feeding machine

One set of pearl feeding machine is connected at the left of the mould-rolling soft capsule machine by the circumscribed. The feeding machine is L400XW350x H650mm.

Material: SUS304. Thickness: 1.5mm. The upper straight jointing tube can be flexibly taken off, and it's easy to clean.

Pressure gauge:

It's at left/right of the capsule machine, with pointer type display by 0.1-1mpa. Pressure gauge's quantity: 2 sets.

Brand: Airtac Y-60 2.5

Refrigerator

It's used to cool the hub's rubber sheet of the soft capsule machine. The external cabinet is put in the non-clean area.

Size: 760\*250\*530 Brand: Gree Model: KFR-50W/VK1

Power distribution cabinet: Stainless steel 304, 1.5mm thickness, wiredrawing on the surface

Original components: DELTA

Frequency convertor: SAJ Model: T8000 vr75m1

## Stainless steel drying basket



SINO-ZL100 type drying basket adopts frequency convertor to control, each joint can have positive or opposite running independently. One of or many of joints can be used at the same time. By controlling the rotation of the basket, pill can be kept in the current rotary drying, and also be pushed to the next to have the drying. Here are some advantages:

- Special single-edge air blowing system ensure that there is even air flow in the basket, which increase the drying speed.
- Accurate ventilation pipeline design ensures that impurities & dust will not enter into the basket with air.
- The newest structure design is adopted, which ensure that when many baskets are used at the same time, pills can be transferred steadily.
- There is a oil-collecting tray under the basket. Oil produced in the drying process will not pollute the ground, so keep the environment be clean and safe.



Dimension

Item	Specification	Remarks
Size of drying basket(2 joints)	1200*520*855(h)mm	
Rotary speed of the drying basket	13rpm	Frequency convertor
Motor	90W*2/380V 50HZ	
Fan power	0.45W*6/380V 50HZ	
Fan's air flow	1400m3/h	
Weight	200KG	

### **C. Shaping & Drying System**

#### **Stainless steel drying vehicle and gelatin pill drying tray**



The traditional stainless steel drying vehicle and the drying tray is after the shape of gelatin pill is fixed, put pill on the drying tray, then put into the secondary drying room, until complete dry.

Horizontal air flow is needed in the final drying room. The room temperature should be controlled within 30~35°C, and the humidity should be less than 25%. On each drying tray, pills can be piled for not more than two layers. For the first two hours, pills should be turned around for four or five times, to ensure pills' shape be better. After 12 ~16hours, it will be completely dry.

Drying tray and the drying vehicle is widely used in the soft capsules' production.

**D. Pills inspecting system**

**Lamp inspecting table**

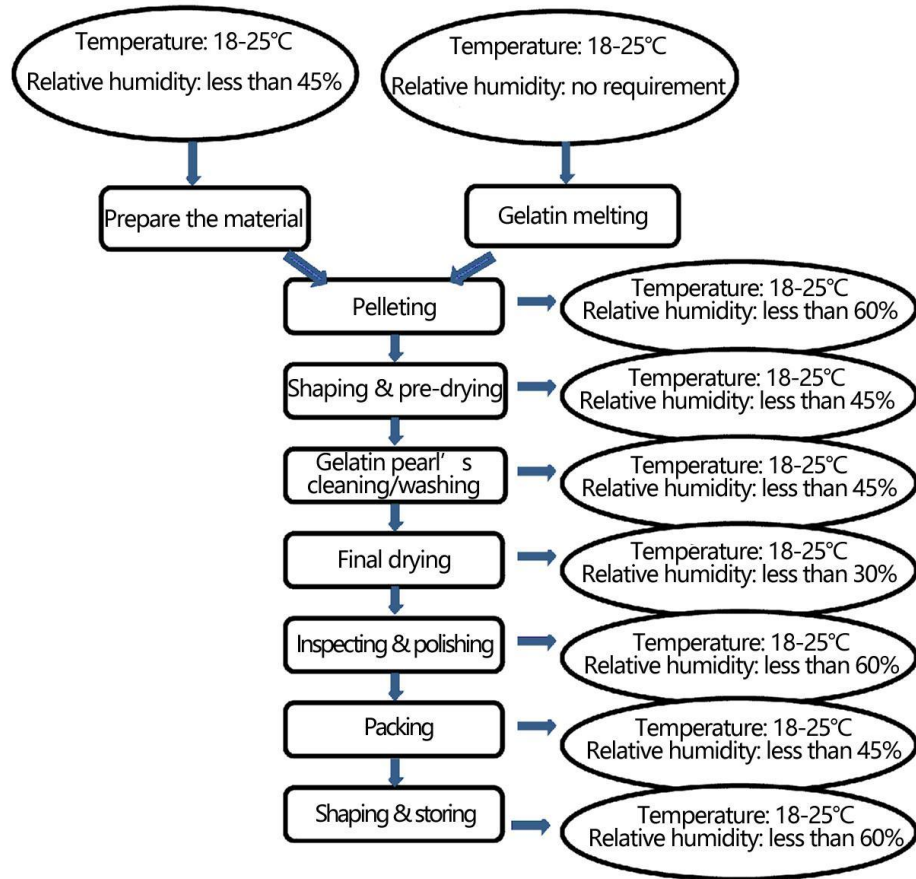


Under enough illuminating, quick pick those gelatin pills which are out of shape or the sealing is not qualified.

Specification and size

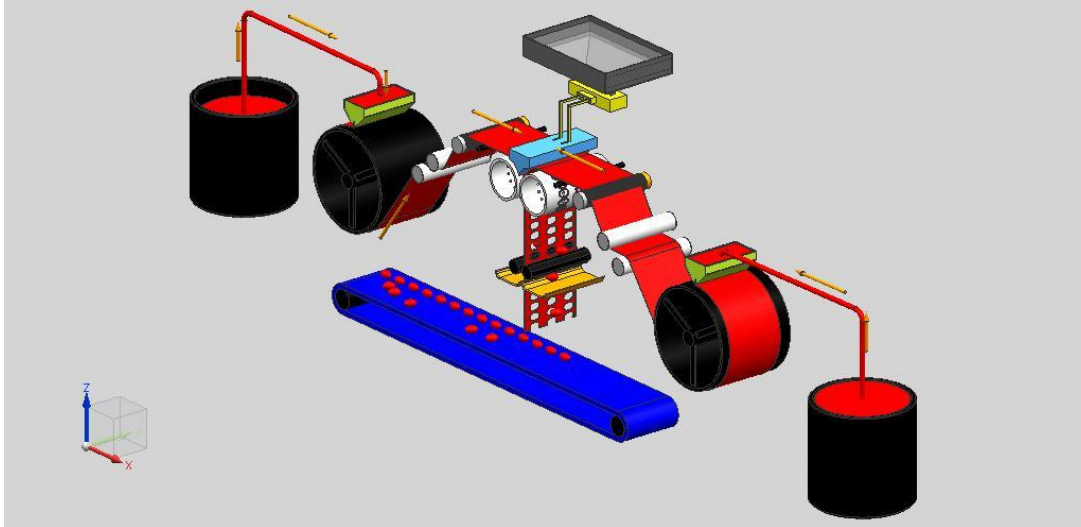
Item	Specification	Remarks
Overall dimension :	800*600*800 ( h ) mm	
Power	1.2KW	
Weight	30kg	

**E. Process Flow Diagram**



### **F. Working principle**

Gelatin will flow out of the gelatin formers which are on both sides of the soft capsule machine, and be spreaded on the running gelatin belt shaping drum. The gelatin belt's thickness is controlled through adjusting knife's height of the former. After cooling and shaping, gelatin belt will be tore off from the upper oil roller. Two gelatin belts which are automatically made will move to the positive direction from both sides. During crossing their relative upper oil roller, the pasting of adhesive agent & release agent are finished. Through the guiding rod and the delivery rolling columns, from the upper of the mould, they will be sent to the middle of one pair of cylindrical rolling mould which are parallely matching, where part of the gelatin belt will be heated by the wedge-shape liquid injector, also by the mould's pressing, so will be pasted together. At the same time, together with the pump, the content will be quantitative outputted, through the pipe and the liquid injector, be ejected out of the injection orifice, then be filled into the capsule chamber covered by the mould chamber formed between the two gelatin belts. As the rolling mould keeps rotation, after the liquid injection, the capsule chamber will be pressed and completely sealed, so form the soft capsule. Then through the convey and the pill blowing machine, enter into the drying & shaping bakset to have the pre-drying.





S.N	Description	Model	Q'ty	Remarks
<b>Dosing system</b> 00 degree. Temperature: 20~24°C, Relative humidity: ≤45-60%. Note: Temperature should be decided according to content's requirement.				
<b>Gelatin melting system</b> Gelatin melting room: Cleanliness 1,000,000 degree. Temperature: 20~24°C, Relative humidity: ≤45-60%.				
1	Stainless steel 304 gelatin melting tank		1 set	Electrical heating, agitating and melting, with 100L electric cabinet
2	Water circulation vacuum pump		1 set	To get rid of bubbles from the liquid
<b>Pelleting system</b> Pelleting room: Cleanliness 1,000,000 degree. Temperature: 20~24°C, Relative humidity: ≤45-60%. Power supply: 12KW, Compressed air: less than 0.1Mpa      PLC control and touch screen operation				
3	Main pelleting machine ( touch screen control )	SINO-100	1 set	1.0-4 R/minute frequency converting variable 2.Main spindle hole is made by Swiss digital control boring machine, with the precision of 0.01mm 3.Feeding device can be debugged flexibly 4.Material for the worm & gear and the driving parts are carefully selected and machined. 5.System is be micro lubricated(reduce oil's consumption and save the cost.) 6.Three sets of heating system
4	Electric control cabinet		1 set	Control centre of the production line
5	Mould	Aluminium alloy	1 set	Shape & specification is decided according to customer's requirement & material including ( 2 aircraft aluminium alloy mould, spraying device, splitter plate, variable gear and sealing gasket
6	Cooling unit		1 set	To cool the gelatin sheet
7	Micro lubricating system		1 set	To lubricate the gelatin sheet
8	Stainless steel 304 drying basket (Pre-drying)		2 joints	1. Rotary drying & shaping, gelatin pill will not be out of shape. 2. For the fan, have the indoor air communication to accelerate the shaping.
<b>Shaping &amp; drying system</b> Shaping & drying room: Cleanliness 1,000,000 degree. Temperature: 24~28°C, Relative humidity: ≤20 - 25%.				
9	Stainless steel 304 drying vehicle	750 × 530 × 100h	1 vehicles	Drying & shaping
10	PE drying tray	750 × 480 × 55h	30 pieces	
<b>Pill's inspecting system</b>				



**Our project Installation**



# Our Certificate



# Dole®



soma







**ALEMİNSAN MAKİNA DANIŞMANLIK LİMİTED ŞİRKETİ**  
İstanbul Tuzla Mescit Mahallesi İlim Sokak No: 1 Aleminsan

Tel: 0902163943132

Fax: 0902163943428

Web: [www.aleminsan.com.tr/](http://www.aleminsan.com.tr/)

E-mail: [ya@aleminsan.com.tr](mailto:ya@aleminsan.com.tr)



**ALEMINSAN MAKİNE**  
www.aleminsan.com.tr

Yafes ALEMİN  
CEO

T: +90 216 394 31 32  
G: +90 532 795 55 89  
F: +90 216 394 34 28  
Mesat Mah. İlim Sk. No: 1 Orhanlı  
Tuzla / İstanbul / Türkiye



# ALEMİN SAN

MAKİNE DANIŞMANLIK HİZMETLERİ



ben website  
ya@aleminsan.com.tr  
email

www.aleminsan.com.tr

Otomatik Alüminyum Folyo Tabak Makinesi

Intelligent **60-80** High Speed times / minute

**ALEMİNSAN**





**ALEMİN SAN**  
www.aleminsan.com.tr



ben website  
ya@aleminsan.com.tr  
email

 **TÜRKİYE DİSTRİBÜTÖRÜ ALÜMİNYUM FOLYO TABAK İMALAT HATTI**



**ALEMINSAN MAKİNE**  
www.aleminsan.com.tr

Yafes ALEMİN  
CEO

T: +90 216 394 31 32  
G: +90 532 795 55 89  
F: +90 216 394 34 28  
Mesat Mah. İlim Sk. No: 1 Orhanlı  
Tuzla / İstanbul / Türkiye







**NİMELA**

**YKR Y.K.R NEW ENERGY**

**ALEMİN**

**SilverEngineer**



我们是这些公司的土耳其代理 Biz Bu Firmaların Türkiye Temsilcisiyiz

Wechat



Brands We Distribute



Whatsapp

**SilverEngineer**

**ALEMİN**

**YKR Y.K.R NEW ENERGY**

**NİMELA**

ALEMİNSAN METAL ANONİM ŞİRKETİ ALEMİNSAN MEKANİZMA METAL SANAYİ TİCARET ANONİM ŞİRKETİ ALEMİNSAN MAKİNE DANIŞMANLIK LİMİTED ŞİRKETİ

**LIKE**

LASER

**WONSTEN®**

SOLUTION FOR MULTI BENDING TUBE FABRICATIONS



Soğuk Tel Ezme  
Kaltwalzwerk  
Cold Rolling Mill

Yafes ALEMİN  
General Manager Asistans



ÜRETİCİ FIRMA / MANUFACTURER

Orhanlı Köyü Mezarlık Yanı Malazgirt Cad.  
No:11 Tuzla / Orhanlı - İSTANBUL/TURKEY

Phone: +90 216 394 31 32 (pbx)  
Fax: +90 216 394 34 28

Gsm: +90 (532) 795 55 89

www.aleminsan.com.tr  
ya@aleminsan.com.tr



Yeni Order

DUJARA SIFIRDAN  
ACELER  
KANEPE MEKANİZMASI

Kanepe ve Mabilya Mekanizmaları  
Sofa and Furniture Mechanisms  
Sofa and Möbel Mechanismen

Yafes ALEMİN  
Genel Müdür Yardımcısı



ÜRETİCİ FIRMA / MANUFACTURER

Orhanlı Köyü Mezarlık Yanı Malazgirt Cad.  
No:11 Tuzla / Orhanlı - İSTANBUL/TURKEY

Tel: 0216 394 31 32 (pbx)  
Fax: 0216 394 34 28

Gsm: +90 (532) 795 55 89

www.aleminsan.com.tr  
ya@aleminsan.com.tr

  
**ALEMİNSAN MAKİNE**  
[www.aleminsan.com.tr](http://www.aleminsan.com.tr)

Yafes ALEMİN  
CEO

T: +90 216 394 31 32  
G: +90 532 795 55 89  
F: +90 216 394 34 28  
Mescit Mah. İlim Sk. No: 1 Orhanlı  
Tuzla / İstanbul / Türkiye

  
ben website  
[ya@aleminsan.com.tr](mailto:ya@aleminsan.com.tr)  
e-mail  
[www.aleminsan.com.tr](http://www.aleminsan.com.tr)



[www.aleminsan.com.tr](http://www.aleminsan.com.tr)

[ya@aleminsan.com.tr](mailto:ya@aleminsan.com.tr)

[ALEMİN SAN MAKİNE DANIŞMANLIK HİZMETLERİ](#)

[Alemin San Mekanizma Metal A.Ş](#)

[KURULUŞUDUR](#)

**ONCA UZUN YOLLARDAN GELDİK**

[ALEMİN SAN MAKİNE DANIŞMANLIK HİZMETLERİ](#)



MACHINERY CONSULTANCY SERVICES

YAFES ALEMİN 机械咨询服务

MESAJ GÖNDERMEK İÇİN TIKLAYINIZ

PAPER STRAW MACHİNE KAĞIT PİPET  
MAKİNELERİMİZ VİDEOLARI İÇİN TIKLAYINIZ

ALÜMİNYUM FOLYO TABAK KASE YAPMA  
MAKİNESİ VİDEOLARI İÇİN TIKLAYINIZ

KARTON BARDAK MAKİNESİ VİDEOLARI İÇİN  
TIKLAYINIZ

TEK KULLANIMLIK OTEL TERLİK VİDEOLARI  
İÇİN TIKLAYINIZ

## ÇİN TEDARİK ÇÖZÜMLERİ

Değerli ithalatçılar ve yeni girişimciler:

Size sunduğumuz hizmetler, tamamen sizin **daha güvenli, risksiz, daha az maliyetle** ve **zaman kaybı olmadan**; Çinden tedariklerinizi yapabilmemiz için dizayn edilmiştir

Bizim için müşteri gizliliği, ithalat başarısı ve memnuniyeti en ön plandadır.

Biz şeffaf çözümler sunarız.

Biz, sizin Çin Tedarik zincirinizde EN sağlam halka olmaya talibiz!

Sizlere de, 10 yıllık Çin tecrübelerimizi aktarmak ve başarılı ithalatlar yapmanıza vesile olmak dileğiyle...

**Detaylı ürün-üretici-fiyat araştırması:** 500 \$ + KDV  
(Her ürün grubu için geçerlidir)

**Fabrika denetleme-güvenirlilik onayı:** 1000 \$ + KDV  
(Her 1 fabrika 1 iş günü için geçerlidir)

### **Distribütörlük**

Size tedarik ettiğimiz üründen, hammadde den veya makina dan memnun mu kaldınız?

Ve bu fabrikanın Türkiye distribütörlüğünü almayı düşünüyorsunuz. Bu konuda da destek veririz.

### **Depo Teslim**

Siz nakliye ve gümrükleme işlemleriyle uğraşmak istemiyor musunuz? Sorun değil, biz size herşey dahil-depo teslim teklif sunarız.

### **Makina Tedarik**

İster Avrupadan olsun, ister Uzakdoğudan. Kaliteli makineleri, garantili olarak tedarik ediyoruz. Siz hangi makineyi hangi konfigürasyonla istediğinizi belirtin, biz size en az 2-3 ülkeden 6-9 teklif sunalım. Arzu ederseniz, anahtar teslim seçeneğimiz de mevcuttur.

### **Ürün/Üretici Araştırması**

Çinden ithalatınızda, firmanıza, en uygun fiyatlarla, en güvenilir üreticileri tespit ederiz. Aynı zamanda, malın üretim süresi, paketlemesi, ödeme şartları gibi detayları da sunarız.

### **Görüntüleme**

Tespit ettiğimiz üreticileri fabrikalarında adınıza ziyaret eder, incelemelerimizi yapar, video ve fotoğraf çekimleriyle destekli değerlendirmemizi sunarız.

### **Yükleme**

Çin ithalatınızın son kontrolleri önemlidir. Mallarınız itina ile kontrol edildikten sonra, konteynıra yüklenmesine refakat eder ve mühürleriz.

### **Makine Danışmanlık Hizmetleri Ücreti**

Makine Üreticisi Tarafın Firmanıza Kesilen Proforma Invoice Fatura Tutarının

%10 Peşin **USD + KDV ücret alacaktır.**

(Örnektir 30.000 usd %10=3000 usd x0,18=540 usd =3540 USD )

# NİMELA

## MARKASI VE LOGOSU

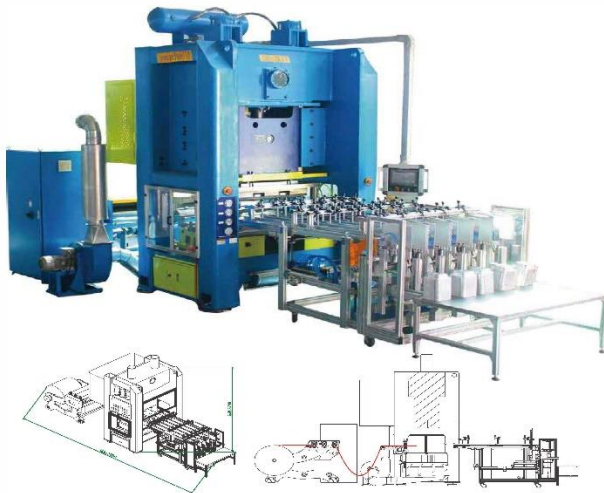
## NİMELA MAKİNE DANIŞMANLIK HİZMETLERİ

## ALEMİNSAN MAKİNA DANIŞMANLIK LİMİTED ŞİRKETİ

## YAFES ALEMİN TARAFINDAN KURULMUŞTUR

Foil Container Production Line  
铝箔容器生产线  
**SEAC-80A**

**SilverEngineer**  
Turkey Distributor  
土耳其經銷商  
**ALEMİNSAN MAKİNA**



### 型号简介 Description

SEAC-80A 的主机采用H型八面导轨定制型精密机械压力机，主要用于生产铝容器。整条生产线机械件采用机电一体化设计，造型美观大方。整条自动生产线主要由送料机、压力机、堆垛机及废料系统等单元组成。生产线机械的电器控制系统分为两个部分：送料机、压力机和废料系统三个单元的集成电器控制柜采用独立系统设计，安全防护，触摸屏显示于压力机左侧，方便操作不占空间；堆垛机的电器柜安装在堆垛机一侧，独立控制堆垛机的所有参数设置和操作。整套生产线符合PLC程序逻辑完美匹配，大大提升整条生产效率和程序空调逻辑的合理性，更替人性化。

SEAC-80A adopts higher precision customized H-Type Eight-Face Guide Rail Mechanical Press. Mainly use for WinMa Wall Container production. The software and hardware of the whole production line adopt Mechanical design, which is beautiful and generous. The whole automatic production line is mainly composed of Feeder, Press, Stacker and Scrap System units. The electrical control system of the whole production line is divided into two parts: the integrated electrical control cabinet of three units of Feeder, Press and Scrap System adopts independent system design, which is safe and anti-interference. The touch screen is hung on the left side of the Press, which is convenient for operation and does not occupy space; The electrical cabinet of the Stacker is installed on one side of the Stacker to independently control all parameter settings and operation. The PLC program logic of the whole production line is perfectly matched, which greatly improves the Production Efficiency of the whole machine and the Rationality of Program Control logic, and is more enter humanized.

### 技术参数 Technical Data

型号 Model	SEAC-80A (3-6Cavities)
公称力 Nominal Force	800KN
主电机功率 Main Motor	16KW, SIEMENS
行程范围 Stroke Range	150-250mm
冲压速度范围 Adjustable Speed	35-80mm/min
电液伺服控制数量	12sets (2*6cavities)
Number of Solenoid Valve Connection with Adjustable Pressure	
工作台面尺寸 Bed/Plate Dimension	L1480xW900mm, 2sets movable plate
最大模厚尺寸 Max. Mould Dimension	L1450xW850xH450mm
供气回路 Number of Air Tank	6units
主机的润滑方式 Press Lubricant Solution	Liquid Hydraulic Oil, Automatic Cycle
最大送料宽度 Max. Width of Foil Passage	1220mm
送料张力控制 Feeder Tension Control	Automatic by Ultrasonic Sensor
箔芯直径范围 Max. Diameter of Foil Roll	800-1500mm
送料精度控制 Feeder Precision Control	±0.1mm, Mitsubishi Servo System
堆垛机标准尺寸 Stacker Ball Size	L2000xW1300mm
最小可堆垛尺寸 Min. Size Stack Available	100x100mm
产线堆垛尺寸 Products Stacking Size	Three lane: L600xW350xH350mm Four lane: L600xW250xH350mm Five lane: L600xW210xH350mm Six lane: L600xW170xH350mm
升降带控制 Lifting System	SMC Servo Cylinder
主要电液品牌 Main Electric Brand	Mitsubishi, SMC, Schneider, OMRON, SILMLINS
设备尺寸 Production Line Dimension	8000x2500x3650mm
设备重量 Production Line Weight	15,000KGS



此设备为定制系统，可适应不同厚度的箔材生产。设备采用进口名牌电机和进口名牌液压元件，运行稳定可靠。设备采用进口名牌伺服电机和进口名牌变频器，运行精度高。设备采用进口名牌导轨和进口名牌丝杠，运行精度高。设备采用进口名牌轴承和进口名牌密封件，运行寿命长。

此设备为定制系统，可适应不同厚度的箔材生产。设备采用进口名牌电机和进口名牌液压元件，运行稳定可靠。设备采用进口名牌伺服电机和进口名牌变频器，运行精度高。设备采用进口名牌导轨和进口名牌丝杠，运行精度高。设备采用进口名牌轴承和进口名牌密封件，运行寿命长。

此设备为定制系统，可适应不同厚度的箔材生产。设备采用进口名牌电机和进口名牌液压元件，运行稳定可靠。设备采用进口名牌伺服电机和进口名牌变频器，运行精度高。设备采用进口名牌导轨和进口名牌丝杠，运行精度高。设备采用进口名牌轴承和进口名牌密封件，运行寿命长。

此设备为定制系统，可适应不同厚度的箔材生产。设备采用进口名牌电机和进口名牌液压元件，运行稳定可靠。设备采用进口名牌伺服电机和进口名牌变频器，运行精度高。设备采用进口名牌导轨和进口名牌丝杠，运行精度高。设备采用进口名牌轴承和进口名牌密封件，运行寿命长。

此设备为定制系统，可适应不同厚度的箔材生产。设备采用进口名牌电机和进口名牌液压元件，运行稳定可靠。设备采用进口名牌伺服电机和进口名牌变频器，运行精度高。设备采用进口名牌导轨和进口名牌丝杠，运行精度高。设备采用进口名牌轴承和进口名牌密封件，运行寿命长。

此设备为定制系统，可适应不同厚度的箔材生产。设备采用进口名牌电机和进口名牌液压元件，运行稳定可靠。设备采用进口名牌伺服电机和进口名牌变频器，运行精度高。设备采用进口名牌导轨和进口名牌丝杠，运行精度高。设备采用进口名牌轴承和进口名牌密封件，运行寿命长。

因为银工 喜悦成功

**SilverEngineer**<sup>®</sup>  
Machinery & Mould



嘉兴银工机械有限公司  
Jiaxing SilverEngineer Machinery Co., LTD

浙江省嘉兴市嘉善县宝群路11号  
NO.11, Baoqun Road, Jashan, Jiaxing, Zhejiang  
电话/Tel: 0573-84970680  
传真/Fax: 0573-84970681  
网站/Website: www.silverengineer.com  
邮箱/E-mail: info@silverengineer.com



Website



国家高新技术企业

**SilverEngineer**

**Turkey Distributor**

土耳其經銷商

**ALEMINSAN MAKINA**

全球铝箔包装行业整体解决服务商

Alu-Foil & Paper Container Packaging  
And Forming Machines





Alemins Makina Danışmanlık Limited Şirketi  
 Adres  
 İstanbul Tuzla Mescit Mahallesi İlim Sokak No: 1 Alemins  
 0216 394 31 32  
 0216 394 34 32  
 0216 394 34 28  
 E-Mail:ya@alemins.com.tr  
 Website:www.alemins.com.tr

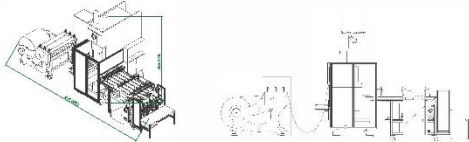


**全球铝箔包装行业整体解决服务商**  
**Alu-Foil & Paper Container Packaging And Forming Machines**

**Otomatik Alüminyum Folyo Tabak Kase Yapma Makinesi**



**SilverEngineer**  
**Turkey Distributor**  
**土耳其經銷商**  
**ALEMINSAN MAKİNE**



**型号简介 Description**

SEAC-63A 的士打采用C型六导轮成型机械压力机，主要用于生产各种铝箔容器。整条生产线收卷单元一体化设计，造型美观大方。整条生产线主要采用铝材、压力机、卷筒及送料及吹气等单元组成。生产线的电气控制部分分为两部分：送料机、收卷机及吹气单元三个部分。送料机和收卷机均采用PLC控制，安全性能好。送料机和收卷机均采用变频调速，方便操作和不停机。送料机和收卷机均采用变频调速，方便操作和不停机。送料机和收卷机均采用变频调速，方便操作和不停机。

SEAC-63A adopts higher precision customized C-Type Six-Face Guide-Roll Mechanical Press. Mainly use for Wide Wall Container production. The software and hardware of the whole production line adopt Mechatronics design, which is beautiful and generous. The whole automatic production line is mainly composed of Feeder, Press, Stacker and Spine System units. The electrical control system of the whole production line is divided into two parts: the Feeder control unit, it includes of Feeder, Press and Spine System units independent system design, which is safe and anti-interference. The touch screen is hung on the left side of the Press, which is convenient for operator's use and not occupy space. The electrical cabinet of the Stacker is installed on one side of the Stacker to independently control all parameter settings and operation. The PLC program logic of the whole production line is perfectly matched, which greatly improves the Production Efficiency of the whole machine and the Rationality of Program Control logic, and is more user humanized.

**技术参数 Technical Data**

型号 Model	SEAC-63A (1-4Cavities)
公称力 Nominal Force	630kN
工作行程 Main Stroke	1100mm SIEMENS
行程范围 Stroke Range	150-300mm
行程速度可调 Adjustable Speed	30-80mm/min
行程速度级数 Number of Solenoid Valve	10sets (2"50bar/1psi)
工作中心尺寸 Bed/Pada Dimension	L1100xW820mm,table provide data
最大材料尺寸 Max.Mat'd. Dimension	L1200xW850xH450mm
供气量 Number of Air Tank	5units
自动润滑方式 Press Lubricant Solution	Sol'd Lith'um Grease, Manual Filling
最大送料宽度 Max. Width of Foil Passage	900mm
送料精度 Feeder Precision Control	Auto-control by Ultrasonic Sensor
最大吹气直径 Max.Diameter of Foil Roll	600-1500mm
送料精度控制 Feeder Precision Control	J.O.1mm, Mitsubishi Servo System
送料精度控制 Stacker Size	L2000xW900mm
最大材料尺寸 Size Stack Available	620x102mm
产品规格尺寸 Product Stacking Size	One lane: L690xW800xH350mm Two lane: L500xW400xH350mm Three lane: L500xW200xH350mm Four lane: L200xW190xH350mm
升降机构 Lift System	SMC Servo Cylinder
主要电气 Main Electric Sp'nc	Mitsubishi/SIEMENS Schneider/OMRON/SIEMENS
设备尺寸 Production Line Dimension	7100x2500x3500mm
设备重量 Production Line Weight	11,500KGS



SEAC-63A 的士打采用C型六导轮成型机械压力机，主要用于生产各种铝箔容器。整条生产线收卷单元一体化设计，造型美观大方。整条生产线主要采用铝材、压力机、卷筒及送料及吹气等单元组成。生产线的电气控制部分分为两部分：送料机、收卷机及吹气单元三个部分。送料机和收卷机均采用PLC控制，安全性能好。送料机和收卷机均采用变频调速，方便操作和不停机。送料机和收卷机均采用变频调速，方便操作和不停机。送料机和收卷机均采用变频调速，方便操作和不停机。

Alemins Makina Danışmanlık Limited Şirketi  
 Adres  
 İstanbul Tuzla Mescit Mahallesi İlim Sokak No: 1 Alemins  
 0216 394 31 32  
 0216 394 34 32  
 0216 394 34 28  
 E-Mail:ya@alemins.com.tr  
 Website:www.alemins.com.tr



**全球铝箔包装行业整体解决服务商**  
**Alu-Foil & Paper Container Packaging And Forming Machines**

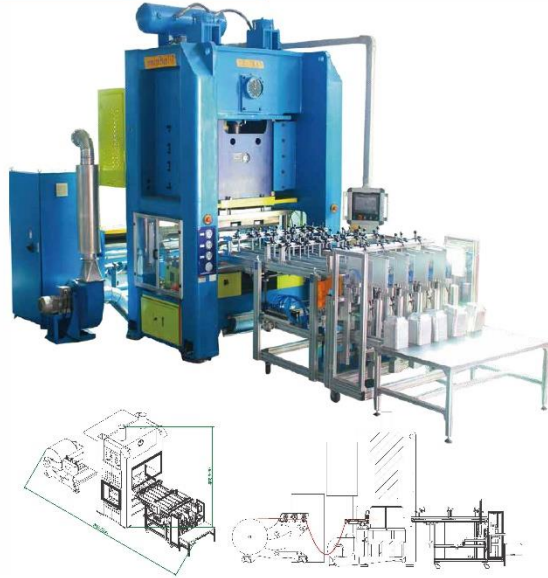
**Otomatik Alüminyum Folyo Tabak Kase Yapma Makinesi**





**Foil Container Production Line**  
**铝箔容器生产线**  
**SEAC-80A**

**SilverEngineer**  
Turkey Distributor  
土耳其经销商  
**ALEMINSAN MAKINA**



Aleminsın Makina Danışmanlık Limited Şirketi  
Adres  
İstanbul Tuzla Mescit Mahallesi İlim Sokak No: 1 Alemins  
0216 394 31 32  
0216 394 34 32  
0216 394 34 28  
E-Mail:ya@aleminsın.com.tr  
Website:www.aleminsın.com.tr



**全球铝箔包装行业整体解决服务商**  
**Alu-Foil & Paper Container Packaging And Forming Machines**  
**Otomatik Alüminyum Folyo Tabak Kase Yapma Makinesi**

■ 型号简介 Description

SEAC-80A 的主要应用为八层中空铝制罐型吹瓶机压力机。主要用于生产铝罐。该款生产吹瓶机和压力机一体化设计。造型美观大方。操作方便生产量可由1000到10000。分为小、中、大型三种规格。生产效率和产能可根据客户要求定制。该机的运行原理由三个单元组成：喂料单元、成型单元和吹瓶单元。每个单元都配备了先进的传感器和控制系统。机器的运行速度可以根据需要进行调整。该机的设计符合人体工程学，操作方便且安全。该机的维护也非常简单，用户可以轻松地进行日常维护和故障排除。

SEAC-80A adopts higher precision customized H-Type Eight-Face Guide Rail Mechanic Press. Mainly use for Wrinkle Wall Container production. The software and hardware of the wrinkle production line adopt Meer control design, which is beautiful and generous. The whole automatic production line is mainly composed of Feeder, Press, and Strip System units. The electrical control system of the wrinkle production line is divided into two parts: the integrated electrical control cabinet of three units of Feeder, Press and Strip System adopts independent system design, which is safe and anti-interference. The touch screen is hung on the left side of the Press, which is convenient for operation and does not occupy space. The electric cabinet of the Stripper is installed on one side of the Stripper to independently control all parameter settings and operation. The PLC program logic of the whole production line is perfectly matched, which greatly improves the Production Efficiency of the whole machine and the Reliability of Program Control logic, and is more smart furnished.

■ 技术参数 Technical Data

型号 Model	SEAC-80A (3-8Cavity)
公称力 Nominal Force	300t
主电动机 Main Motor	9KW SIEMENS
行程范围 Stroke Range	150-260mm
行程速度 Adjustable Speed	35-60mm/s
喂料单元数量 Number of Feeder Unit	3 Sets (2-Stripper)
二冲行程尺寸 Max. Piston Dimension	L1400xW600mm, Piston diameter: ø160
最大行程 Max. Stroke Dimension	L1400xW600mm
二冲行程尺寸 Max. Stroke Dimension	6mm
二冲行程尺寸 Press Lubricant Station	Local Hydraulic Oil Automatic Cycle
最大行程 Max. Width of Full Passages	220mm
喂料单元 Feeder Tension Control	Automatic by Ultrasonic Sensor
最大行程 Max. Diameter of Full Roll	600-1500mm
最大行程 Max. Tension Pressure Control	±0.1mm, Mitsubishi Servo System
喂料单元 Feeder Slacker Belt Size	L2000xW1300mm
喂料单元 Feeder Slacker Belt Size	100x100mm
喂料单元 Feeder Slacker Belt Size	Three Size: 1000xW600xH400mm Five Size: 1500xW900xH400mm
喂料单元 Feeder Slacker Belt Size	Five Size: 1500xW1200xH350mm Six Size: 1500xW1700xH350mm
喂料单元 Feeder Slacker Belt Size	SMC Servo Cylinder
喂料单元 Feeder Slacker Belt Size	Main: SMC, Schneider, OMRON, SIEMENS
喂料单元 Feeder Slacker Belt Size	8000x2500x350mm
喂料单元 Feeder Slacker Belt Size	15,000KG

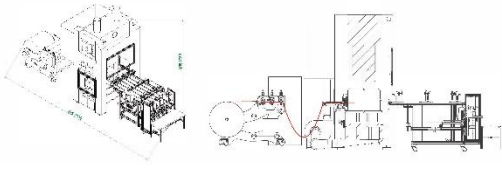


SEAC-80A 的主要应用为八层中空铝制罐型吹瓶机压力机。主要用于生产铝罐。该款生产吹瓶机和压力机一体化设计。造型美观大方。操作方便生产量可由1000到10000。分为小、中、大型三种规格。生产效率和产能可根据客户要求定制。该机的运行原理由三个单元组成：喂料单元、成型单元和吹瓶单元。每个单元都配备了先进的传感器和控制系统。机器的运行速度可以根据需要进行调整。该机的设计符合人体工程学，操作方便且安全。该机的维护也非常简单，用户可以轻松地进行日常维护和故障排除。



Foil Container Production Line  
铝箔容器生产线  
**SEAC-130A**

**SilverEngineer**  
Turkey Distributor  
土耳其經銷商  
**ALEMINSAN MAKİNE**



**型号简介 Description**

SEAC-130A 的主要零件由德国著名厂家制造，主要用于生产铝罐。整条生产线由德国进口机械组成，设计合理，运行稳定。该生产线由三个半自动单元组成，包括送料单元、成型单元和收卷单元。送料单元采用先进的送料系统，送料精度高。成型单元采用先进的成型工艺，成型质量好。收卷单元采用先进的收卷系统，收卷精度高。整条生产线采用先进的 PLC 控制系统，操作方便，维护简单。

SEAC-130A adopts higher precision customized 11 Type Eight Face Guide Roll Mechanical Press. Mainly use for Vehicle Wall Container production. The software and hardware of the whole production line adopt Mechatronics design, which is beautiful and generous. The whole automatic production line is mainly composed of Feeder, Press, Stacker and Sizing System units. The electrical control system of the whole production line is divided into two parts: the integrated electrical control cabinet of three units of Feeder, Press and Sizing System adopts independent system design, which is safe and interference-free. The touch screen is hung on the left side of the Press, which is convenient for operation and convenient to occupy space. The electrical cabinet of the Station is installed in one side of the Feeder for independently control all parameter settings and operation. The PLC program logic of the whole production line is perfectly matched, which greatly improves the production efficiency of the whole machine and the Rationality of Program Control logic, and is more smart humanized.

**技术参数 Technical Data**

型号 Model	SEAC-130A (4-T Cavity)
最大冲力 Max. Force	1300KN
主电机功率 Main Motor	18.0KW, 380V/50Hz
行程范围 Stroke Range	130-260mm
冲床速度可调 Adjustable Speed	30-900mm/min
物料规格 Max. Size	228*2 (2 Cavity)
Number of Stacker Unit Connection with Adj. stacker Preclude	
二片式尺寸 Max. Plate Dimension	L:1700*W:800mm, 2mm's movable plate
最大厚度 Max. Material Thickness	L:1600*W:800 1500mm
供气数量 Number of Air Inlet	7/8"IN
主油缸类型 Main Hydraulic Cylinder	Liquid Hydraulic Oil, Automatic, Cyclic
最大送料宽度 Max. Width of Feil Passage	1420mm
送料张力控制 Feeder Tension Control	Automatic by 1180mm/min
最大送料直径 Max. Diameter of Feil Roll	600-1500mm
送料速度控制 Feeder Revolution Control	0-3.0m, 0.01m, 0.01m, 0.01m, 0.01m
送料速度控制 Feeder Revolution Control	L:2000*W:1500mm
产品堆叠速度 Product Stacking Rate	Hour lane: 1500*W:2000 1000mm Six lane: 1500*W:2000 1500mm Flow lane: 1800*W:2000 1300mm Seven lane: 1800*W:2000 1300mm
引带系统 Lining System	SEAC Series Cylinders
主要电机牌 Main Electric Brand	Mitsubishi, SIEMENS, Schneider, OMRON, SIEMENS
设备尺寸 Production Line Dimension	7000*2200*2700mm
设备重量 Production Line Weight	17,500KGS



该生产线由三个半自动单元组成，包括送料单元、成型单元和收卷单元。送料单元采用先进的送料系统，送料精度高。成型单元采用先进的成型工艺，成型质量好。收卷单元采用先进的收卷系统，收卷精度高。整条生产线采用先进的 PLC 控制系统，操作方便，维护简单。

Aleminsan Makina Danışmanlık Limited Şirketi  
Adres  
İstanbul Tuzla Mescit Mahallesi İlim Sokak No: 1 Aleminsan  
0216 394 31 32  
0216 394 34 32  
0216 394 34 28  
E-Mail:ya@aleminsan.com.tr  
Website:www.aleminsan.com.tr



全球铝箔包装行业整体解决服务商  
Alu-Foil & Paper Container Packaging  
And Forming Machines  
Otomatik Alüminyum Folyo Tabak  
Kase Yapma Makinesi



**ÇİVİ, U KLİPS, C KLİPS, TEL ÇEKME, TEL EZME MAKİNALARI**





NAIL MACHINE

THREAD ROLLING MACHINE

STAPLE NAIL MAKING MACHINE

WELDING WIRES

WIRE DRAWING MACHINE

NAIL POLISHING MACHINE

FASTENERS

WIRE NAIL MAKING MACHINE NORMAL AND HIGH SPEED AUTOMATIC



# *SilverEngineer*

**Turkey Distributor**

土耳其經銷商

**ALEMİNSAN MAKİNA**

CHINA SUPPLY SOLUTIONS

Dear importers and new entrepreneurs:

The services we offer you are completely yours, safer, risk-free, at less cost.

and without wasting time; It has been designed so that you can supply from China.

For us, customer confidentiality, import success and satisfaction are at the forefront.

We offer transparent solutions.

We aspire to be the MOST solid link in your China Supply chain!

We wish to convey our 10 years of Chinese experience to you and to be instrumental in making successful imports...

Detailed product-manufacturer-price research: 500 \$ + VAT

(Valid for each product group)

Factory audit-confidence approval: \$1000 + VAT

(Each factory is valid for 1 working day)

Distributorship

Are you satisfied with the product, raw material or machine we supply to you?

And you are considering getting the Turkey distributorship of this factory. We also provide support in this regard.

Warehouse delivery

Don't you want to deal with shipping and customs clearance?

No problem, we offer you all-inclusive-warehouse delivery.

Machinery Supply

Whether from Europe or the Far East. We supply quality machines with guarantee. You specify which machine you want with which configuration and we will offer you 6-9 offers from at least 2-3 countries. If you wish, we also have a turnkey option.

Product/Manufacturer Research

When you import from China, we identify the most reliable manufacturers for your company at the most affordable prices. At the same time, we provide details such as the production time of the goods, packaging, payment terms.

viewing

We visit the manufacturers we have identified in their factories on your behalf, make our examinations, and present our evaluation supported by video and photo shoots.

Loading

Final checks of your Chinese imports are important. After your goods have been carefully checked, we will accompany the loading into the container and seal it.

Machine Consulting Services Fee

Proforma Invoice Invoice Amount Issued to Your Company by the Machinery Manufacturer

10% Advance USD + VAT will be charged.

(Example is 30.000 usd 10%=3000 usd x0.18=540 usd =3540 USD )

中國供應解決方案

尊敬的進口商和新企業家：

我們為您提供的服務完全屬於您，更安全、無風險、成本更低。

並且不浪費時間；它的設計使您可以從中國供應。

對我們來說，客戶保密、進口成功和滿意度是最重要的。

我們提供透明的解決方案。

我們立志成為您中國供應鏈中最牢固的一環！

我們希望將我們 10 年的中國經驗傳達給您，並幫助您成功進口...

詳細的產品製造商價格研究：500 美元 + 增值稅

(適用於每個產品組)

工廠審計信心批准：1000 美元 + 增值稅

(每家工廠有效期為1個工作日)

經銷權

您對我們提供給您的產品、原材料或機器滿意嗎？

您正在考慮獲得這家工廠的土耳其分銷權。我們也在這方面提供支持。

倉庫交貨

你不想處理運輸和清關嗎？

沒問題，我們為您提供全包式倉庫送貨服務。

機械供應

無論是來自歐洲還是遠東。我們提供質量保證的機器。您指定您想要哪種配置的機器，我們將為您提供來自至少 2-3 個國家/地區的 6-9 個報價。如果您願意，我們還提供交鑰匙選項。

### 產品/製造商研究

當您從中國進口時，我們會以最實惠的價格為您的公司確定最可靠的製造商。同時，我們提供商品的生產時間、包裝、付款條件等詳細信息。

### 觀看

我們代表您訪問我們在他們的工廠中確定的製造商，進行我們的檢查，並通過視頻和照片拍攝來展示我們的評估。

### 正在加載

對您的中國進口商品進行最終檢查很重要。對您的貨物進行仔細檢查後，我們將隨同裝入集裝箱並密封。

### 機器諮詢服務費

### 機械製造商向貴公司開具形式發票金額

將收取 10% 預付美元 + 增值稅。

(例如 30.000 美元 10%=3000 美元 x0.18=540 美元 =3540 美元)

中国温州厨事顿贸易有限公司

WENZHOU KITCHEN TRADING CO. LTD R.P.C.CHINA

# 授权证书

CERTIFICATE OF AUTHORIZATION

兹授予 ALEMİNSAN MAKİNA DANIŞMANLIK LİMİTED ŞİRKETİ  
MR.YAFES ALEMİN为温州厨事顿贸易有限公司和浙江豪艺机械有  
限公司在土耳其国家的经销商。

ALEMİNSAN MAKİNA DANIŞMANLIK LİMİTED ŞİRKETİ MR.YAFES ALEMİN IS  
HEREBY ASSIGNED AS THE DISTRIBUTOR OF WENZHOU KITCHEN TRADING CO.,  
LTD. AND ZHEJIANG HAOWI MACHINERY CO., LTD. IN TURKEY.

授权产品：铝箔餐盒生产线、模具、铝箔餐盒等

Authorized products: Alumnium foil container making machine & foil container

授权期限：2022年9月1日至2027年8月31日

Authorization period: Sep 1st, 2022 to August 31th, 2027

备注：本授权证书以正本为有效文本，不得影印、涂改、转让。  
温州厨事顿贸易有限公司拥有此授权证书的最终解释权。

NOTE: THE ORIGINAL COPY OF THIS LICENSE IS VALID AND CANNOT BE PHOTOCOPIED, ALTERED OR TRANSFERRED.  
WENZHOU KITCHEN TRADING CO., LTD. RESERVES THE RIGHT OF FINAL INTERPRETATION OF THIS AUTHORIZATION  
CERTIFICATE.



温州厨事顿贸易有限公司  
授权单位: KITCHEN TRADING CO., LTD

Authorized Unit:

负责人:

Carlos zheng





# 授权证书

## CERTIFICATE OF AGENCY AUTHORIZATION

Hereby we confirm that ALEMİN SAN MAKİNE DANIŞMANLIK HİZMETLERİ YAFES ALEMİN is our  
sole representative for Turkey market, regarding our SilverEngineer brand products.

ALEMİN SAN MAKİNE DANIŞMANLIK HİZMETLERİ YAFES ALEMİN has it's own technical team to  
install our machines for Turkish clients.

Validity: From July 5th, 2022 to July 5th, 2025



上海银工实业有限公司

SHANGHAI SILVER ENGINEER INDUSTRY CO., LTD.  
ADD: NO.11 BAOQUN W. RD., JIASHAN, ZHEJIANG, CHINA



ZHEJIANG SILVER ENGINEER MACHINERY CO., LTD.  
No.11 Baoqun W.Rd., Jiashan, Zhejiang, China

**ZHEJIANG SILVER ENGINEER MACHINERY CO. LTD.**

**Factory Products Turkey and Balkans and European Countries Distributorship and Technical Services**

To whom it concerns: Hereby we confirm that **ALEMİN SAN MAKİNE DANIŞMANLIK HİZMETLERİ YAFES ALEMİN** is our sole representative for Turkey market, regarding our

Smart Aluminum Foil Container Production Line  
Auto Lubricated Feeding Machine  
Auto Aluminum Foil Container Stacker  
Auto Aluminum Scrap System  
Automatic Rewinding Machine  
Automatic Pop Up Foil Sheet Machine  
Rolls Into Box Packing Machine  
Saw Blade Cutting and Binding Machine

**ALEMİN SAN MAKİNE DANIŞMANLIK HİZMETLERİ YAFES ALEMİN** has it's own technical team to install our machines for Turkish clients.

**ZHEJIANG SILVER ENGINEER CO. LTD.**



To whom it concerns:

Hereby we confirm that YAFES ALEMİN  
is our representant for Turkey market , regarding our Paper  
Straw Making Machines YAFES ALEMİN has  
the paper straw making machine sale authorization and its  
own technical team to install our machines for Turkish  
clients' .Validity: 2020.11.11-2022.11.10

Kunshan Zhiyang Machinery Technology Co., Ltd



No.28, Kangpu Road, Zhoushi Town, Kunshan City, Jiangsu Province, China

江苏省昆山市周市镇康浦路 28 号

+86 (0) 512-57151323





**无锡海路丰科技有限公司**

Wu Xi Hai Roll Fone Science & Technology Co.,Ltd

Address: 2-627,Xiangjiang North Road,New District,Wuxi City,China.214028

Website: www.steelrolltech.com

Mr. Yafes Alemin, who was trained by us on installation, maintenance and use of our machines on behalf of our distributor, is authorized.

Distributor Company : **ALEMİN SAN MAKİNE DANIŞMANLIK**  
Istanbul/TURKEY

Product : Flat Mask Making Machine, N95 Mask Making Machine, Fast Mask Making Machine, Mask Packing Machine, Mask Boxing Machine, Mask UL Sterilization Machine

10 March 2020



赵焕庆



**Chipbest Automation Technology Nanjing Co Ltd. Products  
Turkey And Balkans And European Countries Distributorship  
And Technical Services**

To whom it concerns : Hereby we confirm that **YAFES ALEMİN**  
**ALEMİN** is our sole representant for Turkey market , regarding our Mask  
Making Machines . **YAFES ALEMİN** has it's own  
technical team to install our machines for Turkish clients .

01.09.2021





Zhongshan Zhiqingsong Automatic Machinery Co., Ltd

To whom it concerns:

Hereby we confirm that ALEMİN SAN MAKİNE DANIŞMANLIK HİZMETLERİ is our sole representant for Turkey market, regarding our Mask Making Machines.

ALEMİN SAN MAKİNE DANIŞMANLIK HİZMETLERİ has it's own technical team to install our machines for Turkish clients.

July 4<sup>th</sup>,2022

Zhongshan Zhiqingsong Automatic Machinery Co., Ltd

*Linda Gao*



Wonsten Group letterhead

DATE: APRIL. 21, 2022

**AUTHORIZED LETTER**

Dear Sirs,

By this letter Wonsten Group (China) confirms that Yafes Alemin Makine Danışmanlık Hizmetleri is our official dealer for the supply of our equipment in the territory of the Russian Federation. Has the authority to commission our equipment.

The supplied equipment is covered by the manufacturer's warranty Wonsten Group.

Your sincerely,



-----  
«Wonsten Group», China

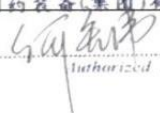


Hereby we confirm that YAFES ALEMİN  
is our representant for Turkey market , regarding our Paper  
Straw Making Machines . YAFES ALEMİN has  
the paper straw making machine sale authorization and its  
own technical team to install our machines for Turkish  
clients'

March 27<sup>th</sup> 2020

Sinoped (China)Limited

For and on behalf of  
Signature **SINOPEL (CHINA) LIMITED**  
中国制药装备(集团)有限公司

  
Authorized Signature(s)



GUANGDONG YYC SCIENTIFIC AND INDUSTRIAL CO., LTD  
Address: No. West Gaoping Highway, Zhongshan City, Guangdong  
Province, PRC (C1 Building, Yingteli Industrial Park)

**GUANGDONG YYC SCIENTIFIC AND INDUSTRIAL CO., LTD**

**Factory Products Turkey and Balkans and European Countries Distributorship and  
Technical Services**

To whom it concerns: Hereby we confirm that **ALEMİN SAN MAKİNE DANIŞMANLIK  
HİZMETLERİ YAFES ALEMİN** is our sole representative for Turkey market, regarding our

AUTO SPREADING MACHINE Y3S (DENIM,PANT,SHIRT,SUIT,LUGGAGE,JACKET)

Auto Fabric Spreading Machine

AUTO SPREADING MACHINE Y5S (T-SIRT,UNDERWEAR,KIDS  
WEAR,SPORTSWEAR)

AUTO SPREADING MACHINE Y6S (T-SIRT,UNDERWEAR,KIDS  
WEAR,SPORTSWEAR)

AUTO SPREADING MACHINE Y7S (LACE)

AUTO SPREADING MACHINE Y15 (LUGGAGE)

AUTO SPREADING MACHINERY14(HOME TEXTILE)

AUTO CUTTING MACHINE V6 (DENIM,PANT,SHIRT,SUIT,LUGGAGE,CAR SEAT)

AUTO CUTTING MACHINE V8E (T-SIRT,UNDERWEAR,KIDS  
WEAR,SPORTSWEAR,JACKET,LUGGAGE,)

AUTO CUTTING MACHINE V9S (DENIM,T-SIRT,UNDERWEAR,KIDS  
WEAR,SPORTSWEAR)

AUTO CUTTING MACHINEP5S(LUGGAGE,JACKET)

**ALEMİN SAN MAKİNE DANIŞMANLIK HİZMETLERİ YAFES ALEMİN** has it's own  
technical team to install our machines for Turkish clients.

**GUANGDONG YYC**



DING NIU

鼎牛全自动开袋机

# 授权证书

CERTIFICATE OF HONOR



兹授权 ALEMİNSAN MAKİNA DANIŞMANLIK LİMİTED ŞİRKETİ

为我公司 TURKEY AND THE BALKANS EUROPE

## 经销代理商

授权编号为：202005230005

授权期限：2022年10月13日至2023年10月12日

### 特此授权

授权单位：诸暨市鼎牛自动化科技有限公司

法定代表人：



2022年10月13日

