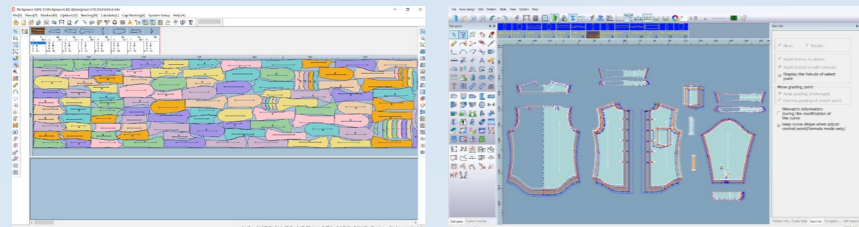


Full Tam Otomatik (Cutter) Pastal Kesim Makinası

Optional Richpeace Garment CAD software and SuperNest System, seamless connecting between pattern-making and auto-cutting, optimizing fabric utilization, efficient, precise and cost-saving.



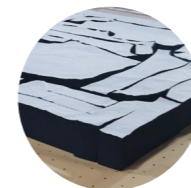
RPAC-NM-MC9-1-1800×1800-SB-MH-P-3P380

Features

1. There is a cutting ecosystem from Garment CAD software-CAM control system-Precision Machinery manufacturing, all with completely independent R&D intellectual property rights.
2. Cutting head is entirely aluminum casting structure, high-strength, long-life-span, light weighted and quiet. Key components are lubrication-free designed, avoiding fabric being-stained, easier daily maintenance.
3. Special coating treated to the high-frequency driving parts, enhanced durability, prolonging service cycle, and cost saving.
4. The intelligent cutter can intelligently change speed according to the cutting trajectory, automatically adjust the angle of the cutter, compensate the side stress, and ensure the consistency of cut pieces at the uttermost.
5. Double diamond automatic knife sharpening device, both sides of the blade are ground at the same time to keep consistency of blade two edges; computerized controlling the grinding times and automatically calculating the blade wear-loss, to ensure accurate cutting.
6. Real-time monitoring of cutting track, with fault alarm and remote diagnosis and troubleshooting.
7. Automatic split of long-marker to multiply window for continuously cutting job, no need for second positioning nor bed-changing clearance reserving, can cut any length of patterns.
8. Conveyor belt with automatic discharging system, can intelligently identify cut pieces finished and delivers to material collection table.
9. Intelligently controlled vacuum pump, with real-time monitor system of the vacuum pressure and inverter loop-controlled, ensures sufficient and constant vacuum suction for the fabric.
10. Machine body can be made to split-structure which is suitable for loading and transportation.

Application

Suitable for woven fabrics, knitted fabrics, leather fabrics, non-woven fabrics, denim fabrics and flexible fabrics such as polyester and nylon.



Knitted fabric



Synthetic leather



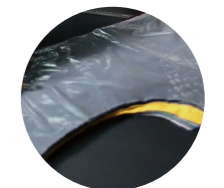
Non-woven fabric



Denim fabric



Woven fabric



Polyester and nylon

Configurations

(Below are for reference, pls. consult with Richpeace for the final configurations)

Aviation grade aluminum alloy integral casting head + beam



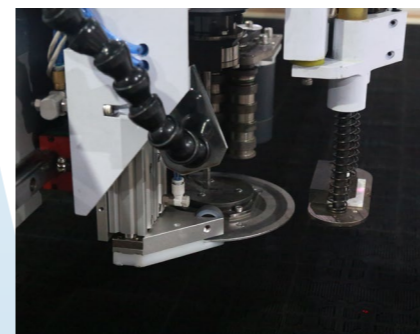
Heat treated stainless steel welded frame



Imported Yaskawa PLC and servo control system



Intelligent cutter + drilling device



Automatic transmission + automatic debris cleaning device



Imported inverter vacuum fan + Intelligent pressure real-time monitor system



Richpeace Automatic 9cm Multi-Layer Cutting Machine

Models (Other models can be customized)

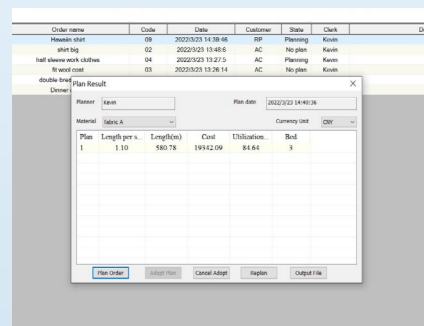
| Models | Effective cutting area | Receiving table length | Weight | Machine size (L×W×H) |
|---------------------------------------|------------------------|------------------------|--------|----------------------|
| RPAC-NM-MC9-1-1800×1600-SB-MH-P-3P380 | 1.8m×1.6m | 1.8m | 3700kg | 5500mm×2600mm×2575mm |
| RPAC-NM-MC9-1-1800×1800-SB-MH-P-3P380 | 1.8m×1.8m | 1.8m | 3800kg | 5500mm×2800mm×2575mm |
| RPAC-NM-MC9-1-2000×1800-SB-MH-P-3P380 | 2.0m×1.8m | 2.0m | 3900kg | 5700mm×2800mm×2575mm |
| RPAC-NM-MC9-1-2500×1800-SB-MH-P-3P380 | 2.5m×1.8m | 2.5m | 4100kg | 6300mm×2800mm×2575mm |
| RPAC-NM-MC9-1-2000×2000-SB-MH-P-3P380 | 2.0m×2.0m | 2.0m | 4100kg | 5700mm×3000mm×2575mm |
| RPAC-NM-MC9-1-2000×2200-SB-MH-P-3P380 | 2.0m×2.2m | 2.0m | 4300kg | 5700mm×3200mm×2575mm |

Parameters

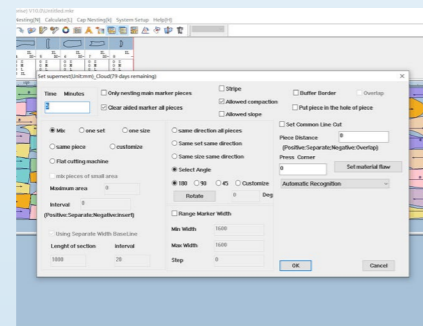
| | | | |
|-------------------------------------|--|----------------------|---|
| Cutting Depth | 9 cm. compressed (Varied as per Fabrics, Layers, Cutting Precision) | Power Supply | Three-phase 380V AC, 50Hz |
| Cutting Speed | 1-60m/min (Varied as per cutting depth and material) | Air Pressure | 7Kpa |
| Maximum Blade Rotating Speed | 6000RPM | File Format | DXF, ISO, HPGL, GBR (Gerber) All Popular Formats |
| Power | 16-36kW | File Transfer | LAN Cable, USB Port, Flash Card, WiFi Connection |

Options

Richpeace Cutting Plan Software



Super Nesting Software



Shifting Device



Silent air pump



Stabilizer



Transformer



Automatic Intelligent Cutting Solutions (mm)

(Automatic fabric loader + 2 sets of 1800mm spreading machines + 2 sets spreading line with 9pcs air-floating tables + 1800mm×1800mm computer cutting machine + shifting device)

