

fSENS DKA/RDKA – Compression Load Cells



Standardized Compression Load Cells

Hirschmann MCS offers four standard Compression Load Cells of the enclosed fSENS DKA version

- Compact and robust design
- Corrosion-resistant: made of stainless steel with a chromium ratio > 15 %
- Self-adjusting in response to angle of force (up to 3°)
- Mounting plate and force path disconnected
- Simple assembly

Measurements ranges:

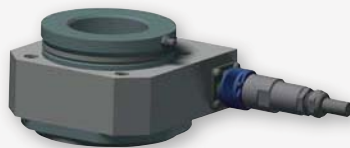
	Dimensions (Ø x H)	Double Safety
1	Ø 55 x 47 [mm]	10-30 kN (1 to 3t)
2	Ø 55 x 47 [mm]	40-100 kN (4 to 10t)
3	Ø 55 x 47 [mm]	110-180 kN (11 to 18t)
4	Ø 85 x 59 [mm]	250-700 kN (25 to 70t)

Customized Compression Load Cells

There are several different options for compression load cells. According to the assembly requirements, nearly any geometrical circumstance can be considered and an optimal solution can be achieved.

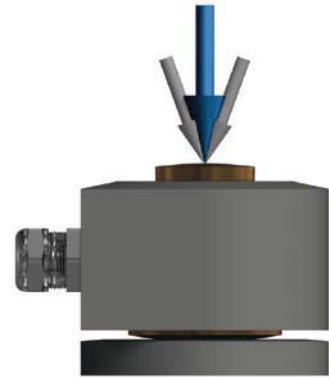
Compression force transducers of the fSENS RDKA series are an ideal choice when design constraints rule out bolt replacements or "dead-end" installations.

- Usable when replacing plungers or installation at the "dead-end" is impossible.
- External or integrated amplifier
- Customer-specified solutions



fSENS RDKA

An innovative solution for advanced requirements



fSENS DKA

Technical Specifications

Description	fSENS DKA / RDKA
Temperature range	-40°C to +80°C***
Protection class	IP66/67 (IEC60529)
Operating voltage	10 to 30 V
Current consumption	< 50 mA (incl. amplifier)
Output signal	4...20 mA, CANopen, 2.5 to 7.5 V DC
Temperature drift	0.1 %/10°K
Linearity* (typical)	< 0.3 % FS
Hysteresis* (typical)	< 0.5 % FS
Connector*	M12 or CANNON
Sensor material	Stainless steel (chromium ratio > 15 %)
Preload*	150 % of nominal load
Safety margin against yielding*	> 200 % (300 %) of nominal load
Safety margin against breakage**	> 350 % (500 %) of nominal load
Support apertures	Bearings and grease fittings

* Other values and types are available on request

** Depending on material

*** Surface temperature