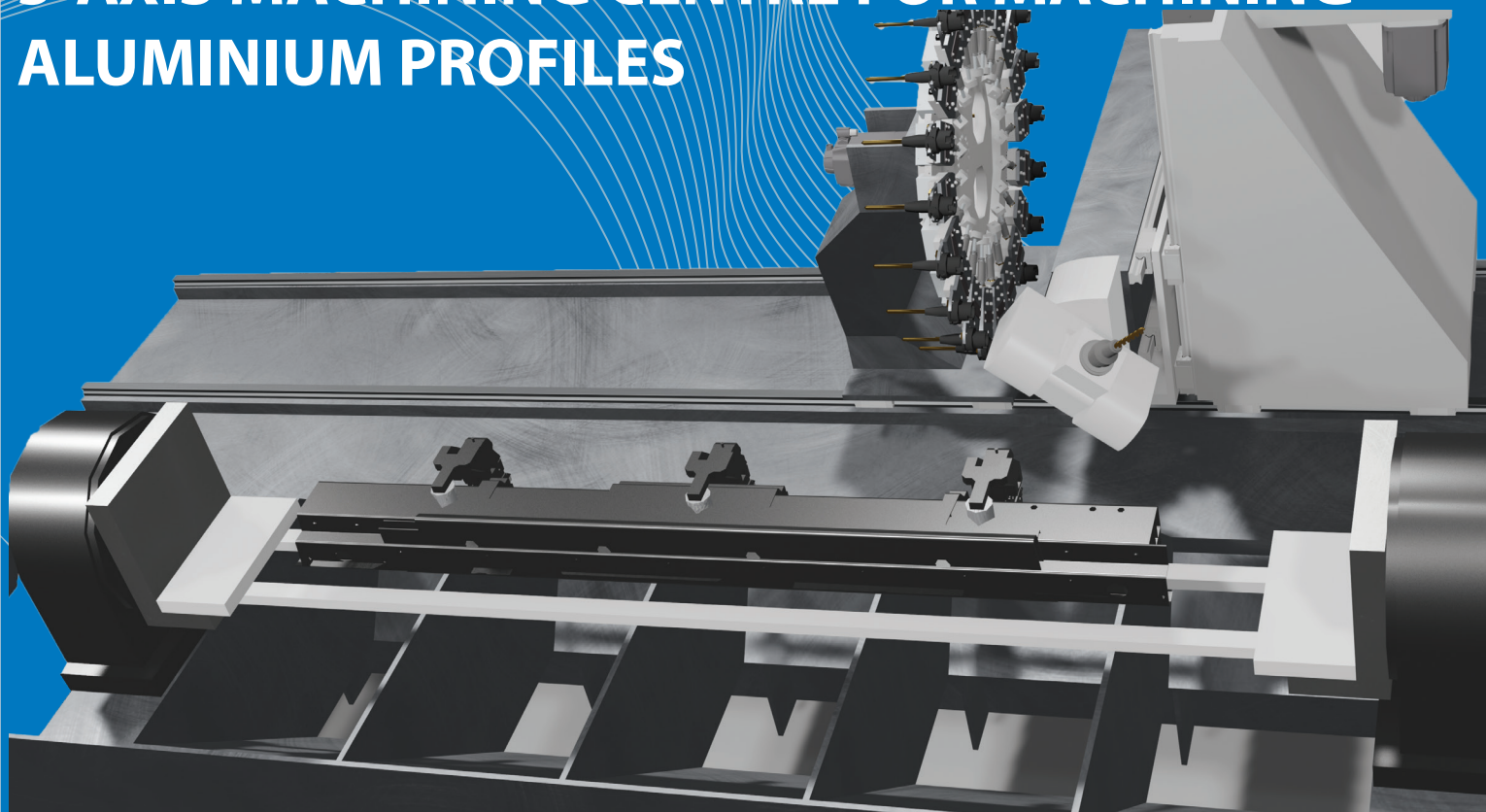


5-AXIS MACHINING CENTRE FOR MACHINING ALUMINIUM PROFILES



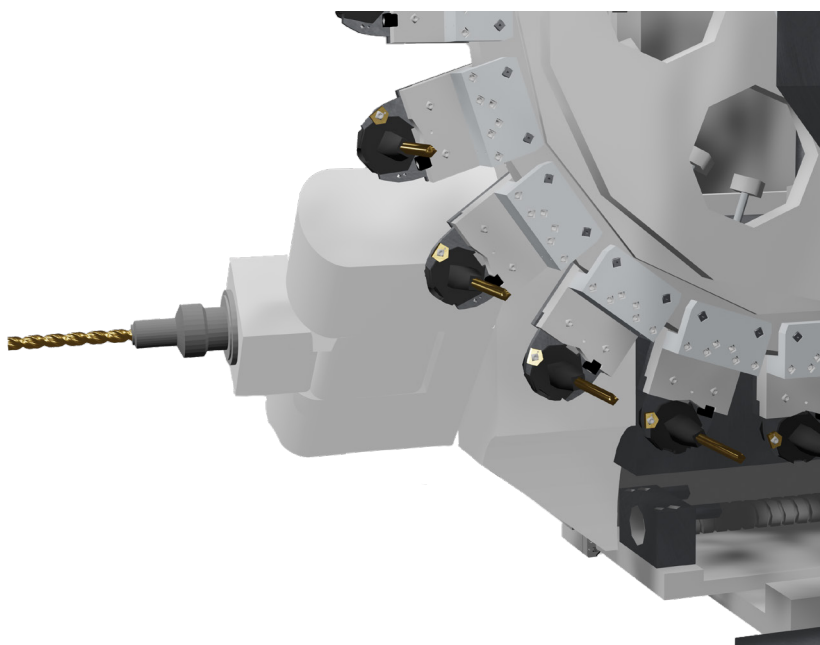
From the **idea** to the finished **product**

The 5-axis machining centre for aluminium profiles was designed according to customer needs. Purpose-built for high flexibility and productivity, it allows to achieve optimum takt times and highest machining quality. Designed for maximum flexibility in machining long slender pieces (with A+C head and additional table rotation option)

ADVANTAGES



- ☞ dry machining/upgradability to MQL or emulsion (not through the spindle)
- ☞ very flexible machining of slender aluminium (or thin-walled steel) profiles
- ☞ workpieces up to 2500 mm in length with a diameter of about 400 mm (extruded profiles)
- ☞ Quick change of clamping fixture for different pieces -> possibility to change clamping fixture with the help of a robot
- ☞ 4x90° table can be replaced by NC table
- ☞ Pneumatic clamping system - possible upgrade to hydraulic system
- ☞ Central lubrication of guides/bearings



MACHINE DESIGN



The design of the 5-axis machining centre for aluminium profiles is based on

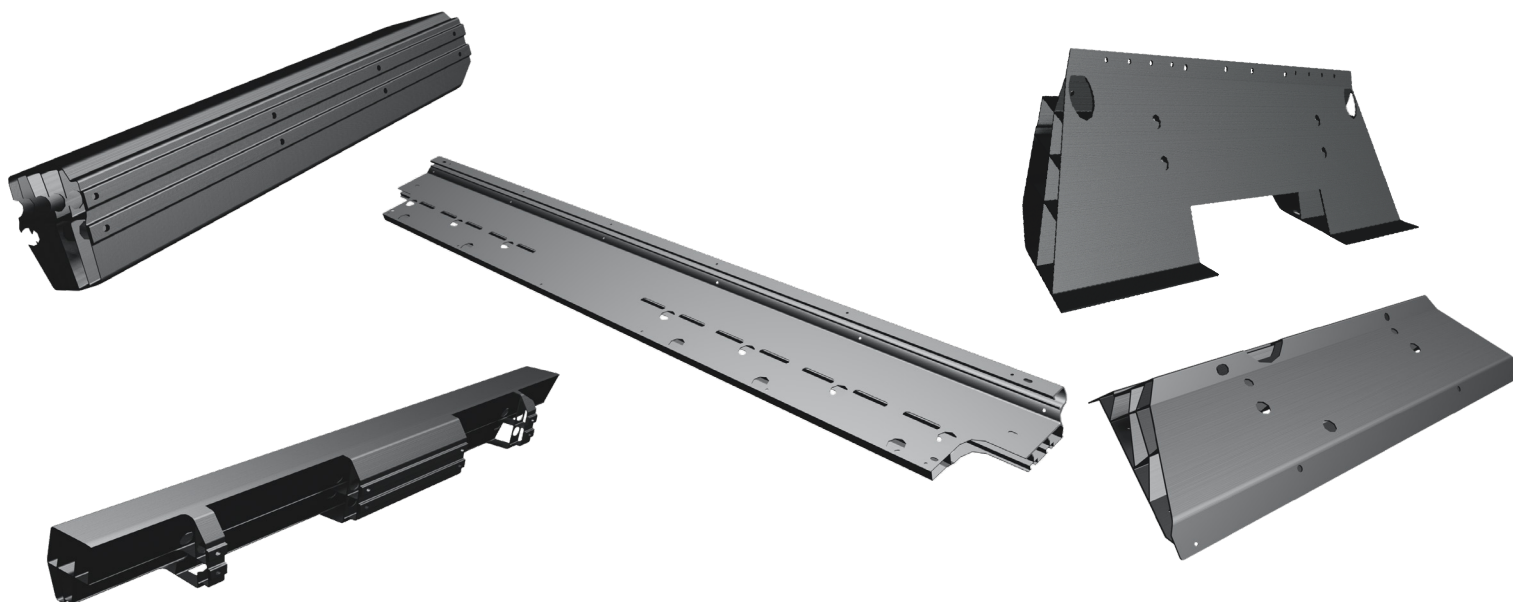
- rigid welded base
- Horizontal design for best chip evacuation
- Designed for maximum flexibility in machining long slender pieces (with A+C head and additional table rotation)
- Designed for machining a large number of different pieces through modular chuck construction and quick changeover
- possibility to clamp a larger number of shorter pieces for higher productivity
- designed for complex machining of aluminium and narrow-walled steel profiles



OPTIMUM WORKPIECES



The machine is designed for machining various components for the automotive, manufacturing and aerospace industries. The machine is best suited for 5-axis machining of aluminium or thin-walled steel profiles.



TECHNICAL DATA



Working area			Tool magazine		
X-axis	mm	4.000	Magazine		24
Y-axis	mm	800	Tool length max.	mm	250
Z-axis	mm	700	Tool diameter	mm	φ140
Working spindle			Controls		
max. rev.	U/min	18.000	SIEMENS	ONE	with PPU1740
max. power	kW	10	Cooling		
max. torque	Nm	15	Dry processing		
Clamp type	HSK	63	Workpiece		
Acceleration			Dimensions	mm	from 1.000 to 4.000
X-axis	m/s ²	10	Machine data		
Y-axis	m/s ²	10	Weight	kg	15.000
Z-axis	m/s ²	10	Height	mm	2.500
Accuracy (option)			Width	mm	4.000
Position tolerance	mm	<0,01	Length	mm	6.000
Position deviation	mm	0,005	Technical data may vary due to specific customer requirements.		

Present:

SLOVENIA

GERMANY

CZECH REPUBLIC

USA

BRAZIL

TURKEY

MEXICO

SCANDINAVIA

FRANCE

SLOVAKIA

ARGENTINA

SOUTH AFRICA

CHINA

POLAND

RUSSIA

UNIOR[®]
Special Machines