

DeKay



让您的装备与世界同步!

Keep your equipment in sync with the world

全国服务热线电话
National Service Hotline

400-853-4166

DeKay

宁波德凯数控机床有限公司

NINGBO DEKAY MACHINERY CO.,LTD.

地址: 浙江省宁海县长街开发区

Address: Changjie Town Development Zone, Ninghai City, Zhejiang Province-315601, China.

电话: +86-574-65309228 传真: +86-574-65309227

Tel: +86-574-65309228 Fax: +86-574-65309227

网址: <http://www.nbdekay.net> <http://www.nbdekay.com>

Website: <http://www.nbdekay.net> <http://www.nbdekay.com>



宁波德凯数控机床有限公司

NINGBO DEKAY MACHINERY CO.,LTD.

+ COMPANY PROFILE

公司简介



宁波德凯数控机床有限公司是一家集研发、制造、销售、服务于一体的高端数控机床生产企业，总部位于“中国制造 2025”试点示范城市—宁波。公司与德国博世力士乐强强合作，共同设立了直线电机技术研发及应用基地，并在美国设立了高端数控滚齿机的技术研发中心，我们倾心于研发，紧跟市场需求，关注加工过程的每一环节，严格要求品质质量，努力打造行业高端产品，公司凭借雄厚的技术研发力量及技术创新理念，已成功开发了多款国内性能领先的数控设备，公司已获得了几十项发明和实用新型专利，通过了 ISO9001 质量体系认证，荣获国家高新技术企业证书，被评选为宁波最具创新品牌和国家科技型企业，并成功挂牌宁波股权交易中心。

公司一直以专业国际制造行业为基准推出了：天车式五轴加工中心、高速龙门加工中心、定梁重切龙门加工中心、直线电机龙门加工中心、立式、卧式加工中心、数控滚齿机等系列产品，产品广泛应用于汽车、模具、航空航天、军工、船舶、医疗器械、5G 及电子等领域。公司产品以卓越的性能、优质的服务，赢得了客户普遍赞誉，并出口世界各地。

公司秉承以质量求生存、以创新求发展、以管理求效益的经营理念，努力打造一家让“员工自豪”、“客户满意”、“社会尊重”的企业！

Ningbo Dekay Machinery Co., Ltd. is a high-end CNC machine tool manufacturer integrating R & D, manufacturing and service. Its headquarter is located in Ningbo, the pilot city of "made in China 2025". In cooperation with Bosch Rexroth of Germany, the company has established a linear motor technology R & D and application center, and set up a high-end CNC gear hobbing machine technology research and development center in the United States. We are devoted to research and development, closely follow the market demand, pay attention to every step of the processing process, strictly require quality, and strive to create high-end products in the industry. The company has obtained dozens of invention and utility model patents, passed the ISO9001 quality system certification, won the national high-tech enterprise certificate, was selected as the most innovative brand and national science and Ningbo technology enterprise, and successfully listed in Ningbo equity trading center.



Based on the professional international manufacturing industry, the company has launched a series of products, such as crane type five axis double column machining center, high-speed double column machining center, fixed cross rail heavy cutting double column machining center, linear motor double column machining center, vertical and horizontal machining center, CNC gear hobbing machine, etc. the products are widely used in automobile, mold, aerospace, military industry, ship, medical equipment, 5G and electricity Sub fields. The company's products with excellent performance, high-quality service, won the general praise of customers, and exported all over the world.

+ ENTERPRISE CULTURE

企业文化

企业愿景：打造一家让“员工自豪”、“客户满意”、“社会尊重”的企业！

经营理念：以质量求生存、以创新求发展、以管理求效益！

服务承诺：优秀的团队，专业的服务！

企业宗旨：质量第一、诚信为本！

质量观念：品质就是尊严！



+ DIRECTORY INDEX

目录索引

公司简介 Company Profile.....	01-04
SG 系列高速龙门加工中心 SG Series High Speed Double Column Machining Center.....	05
PG 系列全齿重切龙门加工中心 PG Series Full gear heavy cutting double column machining center.....	07
H 系列卧式加工中心 H Series Horizontal Machining Center.....	09
V 系列立式加工中心 V Series Vertical Machining Center.....	11
LS 系列直线电机龙门加工中心 LS Series Linear Motor Double Column Machining Center.....	13
YS 系列数控滚齿机 YS Series Gear-Hobbing Machine.....	15
F 系列高速精密雕铣机 F Series High Speed Engraving And Milling Machine.....	17

+ Core 核心产品
Products

高速龙门加工中心

High speed double column machining center

高端汽车模具的加工利器

Tools for processing high-end automobile moulds



重切型龙门加工中心

Heavy cutting double column machining center

强力切削与精密加工的完美结合

Perfect Combination of Strong Cutting and Precision Machining

直线电机龙门加工中心

Linear motor double column machining center

直线电机磁悬浮驱动的技术革新

Technical innovation of linear motor magnetic levitation drive



高速干切滚齿机

High speed dry cutting hobbing machine

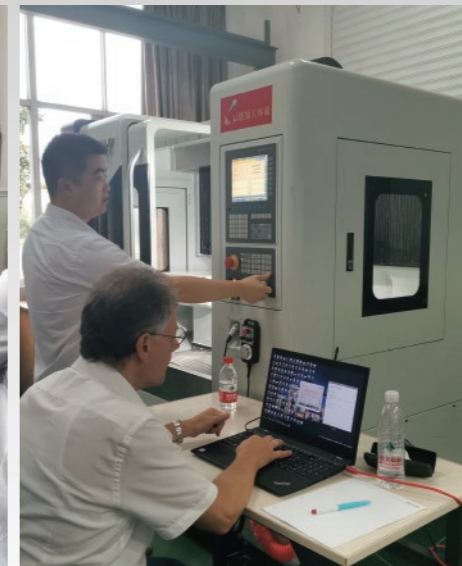
国际领先的高速滚齿干式切削工艺

International Leading High Speed Hobbing Dry Cutting Technology

+ Honor 荣誉和研发
Research and development



德国工程师莅临宁波德凯技术指导
German engineer do the technical guidance in Ningbo Dekay



SG Series

高速系列龙门加工中心 High Speed Double Column Machining Center

+ MECHANICAL 机床特点 CHARACTERISTICS

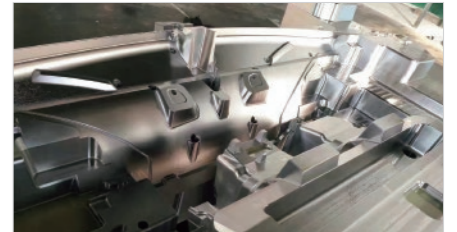
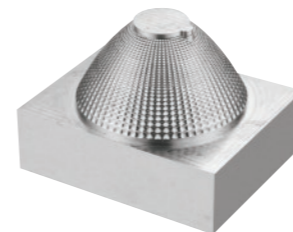
SG 系列为 Dekay 新一代专属模具制造与精密零件加工所设计研发的高速龙门加工中心，高刚性结构设计可承载高速度之铣削，缩短模具及零件加工时间。整机采用高精度传动部件，达到高速度、高精度与高效率的制造要求。整机采用米汉纳铸铁，经应力及时效处理，保证机床长期要求之高精度与使用寿命。

SG Series is Dekay design High-speed double column machining center special for mold Manufacturing and high Precision Parts Processing, high-rigidity machine can bear high speed processing, it will be save the time of processing the mold and parts. whole machine adopts high precision transmission components to achieve high manufacturing of speed, high precision and high efficiency. whole machine adopts meehanite cast iron, through stress and aging treatment, keep the machine accuracy and lifetime.



项 目 Item	单 位 Unit	SG650	SG870	SG1075	SG1190	SG1310	SG1614	SG2515
加工范围 Machining scope								
X 轴行程 X axis travel	mm	550	720	750	1100	1300	1600	2500
Y 轴行程 Y axis travel	mm	650	830	1000	900	1000	1400	1500
Z 轴行程 Z axis travel	mm	400	450	500	500	500	700	760
龙门有效宽度 Width between column	mm	700	800	1100	1100	1100	1410	1525
工作台面至主轴端面的距离 Spindle nose to table surface	mm	160-560	180-630	180-680	330-830	330-830	250-950	200-960
工作台 Table								
工作台尺寸 Table size	mm	650x550	800x750	1000x750	1100x900	1400x900	1700x1300	2700x1300
工作台承重 Table load	Kg	500	800	1000	1500	2000	4000	6000
T 型槽规格 T slot		5x16x110	5x18x158	5x18x185	5x18x175	5x18x175	7x22x185	8x22x150
驱动进给 Feedrate								
最大切削速度 X/Y/Z Maximum cutting feedrate X/Y/Z	m/min	10	10	10	10	10	10	10
快速移动速度 X/Y/Z Rapid traverse X/Y/Z	m/min	20/20/20	20/20/20	20/20/20	20/20/20	20/20/20	20/20/15	15/15/10
主轴 Spindle								
驱动方式 Drive type		主轴直联 Direct driven						
主轴最高转速 Maximum spindle speed	rpm	15000	15000	15000	15000	15000	15000	15000
主轴功率 Spindle power	kW	5.5	7.5	7.5	11.7	11.7	20	20
主轴扭矩 Spindle torque	N.m	23.5/35	34/46	35/47	34/46	34/46	58/82	58/82
主轴锥孔 Spindle taper		BT40	HSK-A63	HSK-A63	HSK-A63	HSK-A63	HSK-A63	HSK-A63
其它 Others								
刀库容量 ATC capacity	T	20	24	24	24	24	24	24
控制系统 Control system		三菱			西门子 SIEMENS			
机床重量 Machine weight	t	4.5	5.5	6	8	9.5	14	23
机床尺寸 Machine size	mm	2000x1920x2250	2550x2550x2350	2890x2280x2450	3776x2279x2752	4031x2280x2752	4900x3152x3350	7460x4510x3600

标准配置	Standard	选配配置	Option
1. 数控系统: SIEMENS 828D	1. Control system: SIEMENS 828D	1. 数控系统: 三菱 M80A、FANUC 0i	1. Control system: Mitsubishi M80A. FANUC 0i MF
2. 主轴恒温冷却系统	2. Spindle cooling system	2. 电主轴 20000rpm (HSK-A63)	2. Built in spindle 20000rpm (HSK-A63)
3. 气动、集中润滑系统	3. Pneumatic.lubrication system	3. 圆盘 24 把机械刀库 (HSK-A63)	3. 24T ATC(HSK-A63)
4. 机床带顶全防护	4. Full enclosure with top cover	4. 主轴环喷冷却	4. Spindle ring spray cooling
5. 三色灯、照明灯	5. 3-color signal lamp, working light	5. 数控分度盘 (第四轴)	5. CNC rotary table(The 4th axis)
6. 标准附件及相关文件	6. Standard accessories	6. 工件自动测量装置 (2D)	6. Workpiece probe
7. 常用维修工具	7. Common service tools	7. 刀具自动测量装置	7. Tool setter
8. 螺杆排屑装置	8. Helix chip conveyor	8. 油水分离装置	8. Oil skimmer
9. 电柜空调	9. Air conditioner of electrical cabinet	9. 光栅尺 (全闭环)	9. Linear scale



本公司随时进行改进工作，因此保有随时更改机床参数的权利，变更时恕不另行通知。
The company do the research and improvement any time, so we will be change the machine parameters without notice.

PG Series

全齿重切龙门加工中心

Full gear heavy cutting double column machining center

MECHANICAL 机床特点 CHARACTERISTICS

PG 系列全齿重切龙门加工中心是德凯数控引进多项日本核心技术联合开发的高精高效加工设备，此机床具备大扭矩重切削，高转速高效精密加工的双重优势，广泛应用于汽车，航空航天，船舶，军工，工程机械，模具及机械产品加工等，给用户带来高质量的产品加工体验。

PG series Full gear heavy cutting double column machining center is a high-precision and high-efficiency processing equipment by Dekay with several core components technologies of Japan. This machine tool has the dual advantages of large torque heavy cutting and high speed high efficiency precision processing. It is widely used in automobiles, aerospace, ships, military, engineering machinery, mold and mechanical products processing, etc. It takes high-quality product processing experience to users.

- ※ X-axis $\Phi 63$ diameter large ball screw with German gearbox to transfer high rigidity feedrate.
- ※ X and Y axis linear guide way adopt 55mm guideways of Bosch Rexroth, Germany, which is the world's top brand.
- ※ Long-distance guideway of crossrail ensures the stability of cutting and geometric accuracy with strong rigidity capability.
- ※ Z-axis large T-type and eight-surface sliding guideway, providing the best cutting vibration resistance.
- ※ Two-speed full gear transmission, the maximum output torque of standard configuration can reach 606N.m.
- ※ Separated dual oil-chiller system to ensure the lasting accuracy and stability of the core components.

- ※ X 轴 $\Phi 63$ 直径大丝杠结合德国齿轮箱传递高刚性进给。
- ※ X、Y 轴线轨均排布世界顶级品牌德国博世力士乐 55 导轨。
- ※ 横梁大跨距导轨排布，强大的抗颠覆能力，保证切削及几何精度稳定性。
- ※ Z 轴大 T 型八面包容滑动导轨，提供最佳的切削抗振能力。
- ※ 双速全齿轮传动，标准配置最大输出扭矩可达 606N.m。
- ※ 分离式双油冷系统，保证核心部件持久的精度稳定性。



项 目 Item	单 位 Unit	PG2116	PG2616	PG3116
加工范围 Machining scope				
X 轴行程 X axis travel	mm	2100	2600	3100
Y 轴行程 Y axis travel	mm	1600	1600	1600
Z 轴行程 Z axis travel	mm	800	800	800
龙门有效宽度 Width between column	mm	1600	1600	1600
工作台面至主轴端面的距离 Spindle nose to table surface	mm	180-980	180-980	180-980
工作台 Table				
工作台尺寸 Table size	mm	2000X1500	2500X1500	3000X1500
工作台承重 Table load	t	6	8	10
T 型槽规格 T slot		9x22x160	9x22x160	9x22x160
驱动进给 Feedrate				
最大切削速度 X/Y/Z Maximum cutting feedrate X/Y/Z	m/min	10/10/10	10/10/10	10/10/10
快速移动速度 X/Y/Z Rapid traverse X/Y/Z	m/min	15/20/15	15/20/15	15/20/15
主轴 Spindle				
驱动方式 Drive type		全齿轮传动 Full gear driven		
主轴最高转速 Maximum spindle speed	rpm	6000	6000	6000
主轴功率 Spindle power	kW	15/18.5	15/18.5	15/18.5
主轴扭矩 Spindle torque	N.m	368/606	368/606	368/606
主轴锥孔 Spindle taper		BT50	BT50	BT50
其它 Others				
刀库容量 (选项) ATC capacity (Option)	T	24	24	24
控制系统 Control system		FANUC	FANUC	FANUC
机床重量 Machine weight	t	20	23	26
机床尺寸 Machine size	mm	6610x3900x4350	7620x3900x4350	8620x3900x4350

标准配置	Standard	选配配置	Option
1. 数控系统: FANUC Oi MF	1. Control system:FANUC Oi MF	1. 数控系统: 三菱 M80A	1. Control system:Mitsubishi M80A.
2. 主轴恒温冷却系统	2. Spindle cooling system	2. 圆盘 24/40 把机械刀库 (BT50)	2. 24/40T ATC
3. 气动、集中润滑系统	3. Pneumatic.lubrication system	3. 主轴中心出水	3. Coolant through spindle
4. 机床带顶全防护	4. Full enclosure with top cover	4. 数控分度盘 (第四轴)	4. CNC rotary table(The 4th axis)
5. 三色灯、照明灯	5. 3-color signal lamp, working light	5. 工件自动测量装置 (2D)	5. Workpiece probe
6. 标准附件及相关文件	6. Standard accessories	6. 刀具自动测量装置	6. Tool setter
7. 常用维修工具	7. Common service tools	7. 油水分离装置	7. Oil skimmer
8. 螺杆、链排 排屑装置	8. Helix chip conveyor	8. 光栅尺 (全闭环)	8. Linear scale
9. 电柜空调	9. Air conditioner of electrical cabinet		

本公司随时进行研究改进工作，因此保有随时更改机床参数的权利，变更时恕不另行通知。
The company do the research and improvement any time, so we will be change the machine parameters without notice.

H Series

卧式加工中心 Horizontal Machining Center

MECHANICAL 机床特点 CHARACTERISTICS

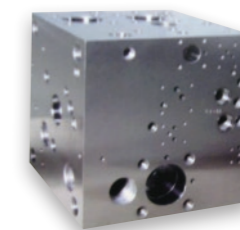
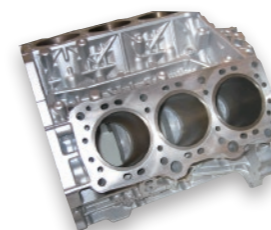
H 系列卧式加工中心采用国际先进的 T 型整体床身结构，龙门式立柱，正挂箱结构，刚性强，精度保持性佳，适合精密箱体类零部件的加工，可一次装夹进行多面的铣削、钻孔、扩孔、镗孔、攻丝等，产品广泛应用于汽车、轨道交通、航空航天、阀门、矿山机械、纺织机械、塑料机械、船舶、电力等重点领域。

H series horizontal machining center adopts T type integral base, gantry type column with midpoint hanging box, strong rigidity, good accuracy, it is suitable for high precision box parts processing, it can be clamped at one time for multi-faceted milling, drilling, reaming, boring, tapping, etc., The machine widely used in automobiles, rail transit, aerospace, valves, mining machinery, textile machinery, plastic machinery, ships, electricity, etc.



项 目 Item	单 位 Unit	H50	H63	H80
加工范围 Machining scope				
X 轴行程 X axis travel	mm	740	1050	1300
Y 轴行程 Y axis travel	mm	680	750	1000
Z 轴行程 Z axis travel	mm	650	900	1000
主轴中心线至工作台面距离 Spindle center to table surface	mm	120-800	120-870	120-1120
主轴端面到工作台中心距离 Spindle nose to table center	mm	130-780	130-1030	200-1200
工作台 Table				
工作台尺寸 Table size	mm	500X600	630X700	800X800
工作台承重 Table load	Kg	600	950	1500
工作台分度 Table indexing	°	1° X360	1° X360	1° X360
工作台最大回转直径 Table rotary diameter	mm	Φ750	Φ1100	Φ1600
驱动进给 Feedrate				
最大切削速度 X/Y/Z Maximum cutting feedrate X/Y/Z	m/min	10/10/10	10/10/10	10/10/10
快速移动速度 X/Y/Z Rapid traverse X/Y/Z	m/min	24/24/24	24/24/24	24/24/24
主轴 Spindle				
驱动方式 Drive type			皮带传动 Belt driven	
主轴最高转速 Maximum spindle speed	rpm	6000	6000	6000
主轴功率 Spindle power	kW	15/18.5	15/18.5	15/18.5
主轴扭矩 Spindle torque	N.m	143/191	143/191	143/191
主轴锥孔 Spindle taper		BT50	BT50	BT50
其它 Others				
刀库容量 (选项) ATC capacity (Option)	T	24	24	24
控制系统 Control system		三菱 Mitsubishi	三菱 Mitsubishi	三菱 Mitsubishi
机床重量 Machine weight	t	10	12	14
机床尺寸 Machine size	mm	3819x2900x2750	4500x4000x3100	5900x3700x3500

标准配置	Standard	选配配置	Option
1. 数控系统: 三菱 M80B	1. Control system: Mitsubishi M80B	1. 数控系统: FANUC 0i MF	1. Control system:FANUC 0i MF.
2. 主轴恒温冷却系统	2. Spindle cooling system	2. 32/40/60 把机械刀库 (BT50)	2. 32/40/60T ATC
3. 气动、集中润滑系统	3. Pneumatic.lubrication system	3. 数控回转工作台 0.001°	3. CNC rotary table 0.001°
4. 机床带顶全防护	4. Full enclosure with top cover	4. 双交换工作台	4. 2 pallets exchanger
5. 三色灯、照明灯	5. 3-color signal lamp, working light	5. 油水分离装置	5. Oil skimmer
6. 标准附件及相关文件	6. Standard accessories	6. 光栅尺 (全闭环)	6. Linear scale
7. 常用维修工具	7. Common service tools	7. 主轴中心出水	7. Coolant through spindle
8. 螺杆、链排 排屑装置	8. Chip conveyor	8. 工件自动测量装置	8. Workpiece probe
9. 电柜空调	9. Air conditioner of electrical cabinet	9. 刀具自动测量装置	9. Tool setter
		10. 主轴扭矩加大 (382/472N.m)	10. Spindle torque enlarge (382/472N.m)



本公司随时进行研究改进工作，因此保有随时更改机床参数的权利，变更时恕不另行通知。
The company do the research and improvement any time, so we will be change the machine parameters without notice.

V Series

立式加工中心

V series Vertical Machining Center

MECHANICAL 机床特点 CHARACTERISTICS

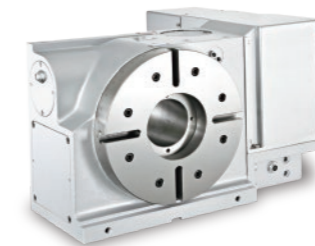
DEKAY 立式加工中心主要用于加工板类、盘类件、壳体件、模具等精度高、工序多、形状复杂的零件，可在一次装夹中连续完成铣、钻、扩、铰、镗、攻丝、及二维曲面，斜面的精确加工，加工实现程序化，缩短了生产周期，从而使用户获得良好的经济效益。

DEKAY vertical machining center is mainly used to process high accuracy, many processes and complex shape of plate, shell and mold. It can be continuously completed in one clamp for parts with milling, drilling, expanding, reaming, boring, tapping etc., also it can be machining two-dimensional surface and inclined surface, programmed processing, reduce the processing cycle time. So that users can get high economic performance.



项 目 Item	单 位 Unit	V855	V1160	V1370LH	V1580LH
加工范围 Machining scope					
X 轴行程 X axis travel	mm	800	1100	1300	1500
Y 轴行程 Y axis travel	mm	550	600	700	800
Z 轴行程 Z axis travel	mm	550	600	700	700
主轴中心至立柱轨道面距离 Spindle center to guide way of column	mm	595	650	750	865
工作台面至主轴端面距离 Spindle nose to table surface	mm	120-670	120-720	120-820	120-820
工作台 Table					
工作台尺寸 Table size	mm	1000x550	1200x600	1400x700	1600x800
T 型槽 T slot	mm	5x18x90	5x18x100	7x22x110	7x22x100
工作台负重 Table load	Kg	500	800	1000	1100
主轴 Spindle					
主轴转速 Spindle speed	rpm	8000	8000	6000	6000
主轴锥孔 Spindle taper	-	BT40	BT40	BT50	BT50
主轴电机功率 Spindle motor power	kW	7.5	11	15	15
主轴扭矩 Spindle torque	N.m	35/47.7	47/70	140/190	140/190
进给驱动 Feedrate					
切削进给 X/Y/Z Cutting feedrate X/Y/Z	m/min	10	10	10/10/10	10/10/10
快移速度 X/Y/Z Rapid traverse X/Y/Z	m/min	48/48/48	36/36/30	30/30/20	30/30/20
其它 Others					
刀库容量 ATC capacity	T	24	24	24	24
控制系统 Control system	-	MITSUBISHI M80B	MITSUBISHI M80B	MITSUBISHI M80B	MITSUBISHI M80B
机床重量 Machine weight	t	5	6.5	10	15.5
机床尺寸 Machine size	mm	2600x2500x2700	3200x2700x3000	4180x3050x3187	4580x3050x3187

标准配置	Standard	选配配置	Option
1. 数控系统: 三菱 M80B	1. Control system:Mitsubishi M80B	1. 数控系统: FANUC Oi MF	1. Control system:FANUC Oi MF
2. 主轴恒温冷却系统	2. Spindle cooling system	2. 直联 12000/15000 转, 电主轴 20000rpm (BT40)	2.Direct driven 12000/15000rpm, Built in spindle 20000rpm(BT40)
3. 气动、集中润滑系统	3. Pneumatic.lubrication system	3. 主轴中心出水	3. Coolant through spindle
4. 导轨防护罩	4. Guideway steel cover	4. 数控分度盘 (第四轴)	4. CNC rotary table(The 4th axis)
5. 三色灯、照明灯	5. 3-color signal lamp, working light	5. 工件自动测量装置 (2D)	5. Workpiece probe
6. 标准附件及相关文件	6. Standard accessories	6. 刀具自动测量装置	6. Tool setter
7. 常用维修工具	7. Common service tools	7. 油水分离装置	7. Oil skimmer
8. 后冲水排屑装置	8. Chip conveyor with Back flushing	8. 链式排屑机	8. External chip conveyor



本公司随时进行研究改进工作，因此保有随时更改机床参数的权利，变更时恕不另行通知。
The company do the research and improvement any time, so we will be change the machine parameters without notice.

LS Series

直线电机高速龙门加工中心 Linear Motor High Speed Double Column Machining Center

MECHANICAL 机床特点 CHARACTERISTICS

Dekay 直线电机高速龙门加工中心主要用于石墨、模具高精加工、3C、汽车检具、机械结构件等高光加工，可在一次装夹中连续完成铣、钻、高速攻丝、曲面加工等，从而使用户达到更好的经济效益。

Dekay Linear motor high speed double column machining Center is mainly used for graphite, mold, 3C, automobile inspection tools, mechanical structure parts and other high-accuracy processing. It can be finish in one clamp of milling, drilling, high-speed tapping, surface processing, so it can achieve better economic benefits for users.

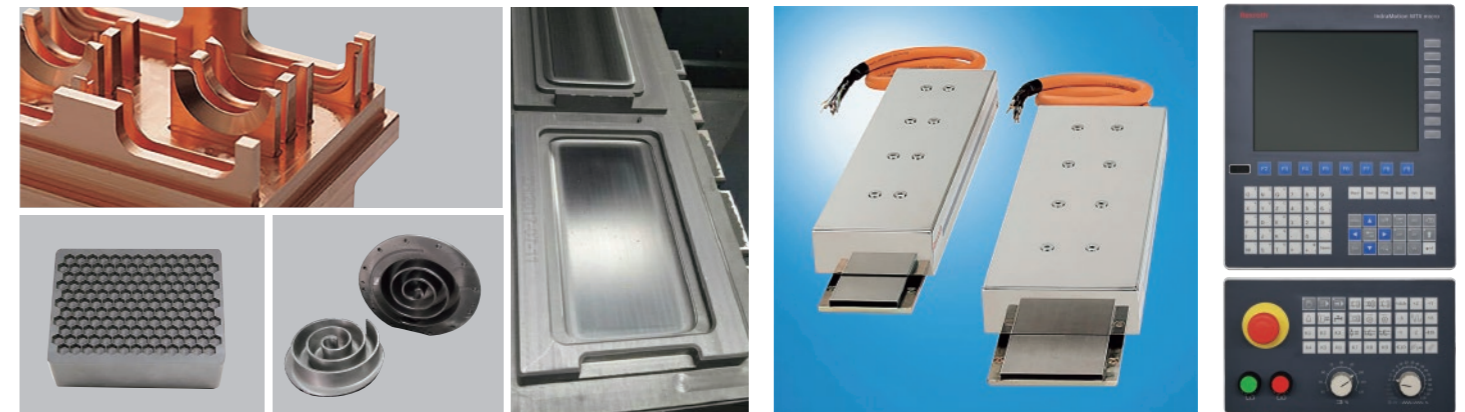
高加速度特性提升卓越的加工品质及效率；
无摩擦式的德国博世力士乐磁悬浮驱动，结合高精密光栅尺，保证机床的精度永久稳定。
永磁同步电主轴，轻量化的设计保障机床运行的高速、高效特性。
超强的精度稳定性：
定位精度：0.003mm/ 全行程
重复定位精度：0.002 / 全行程

High acceleration improves excellent processing quality and efficiency.
Frictionless magnetic levitation driven of Bosch Rexroth , combined with high precision linear scale, ensures the machine tool stability of accuracy.
Synchronized permanent magnet built in spindle, lightweight design ensures high speed and high efficiency of machine tool operation.
Super stability of accuracy:
Positioning accuracy: 0.003mm/ full range
Repeatability accuracy: 0.002 / full range



项 目 Item	单位 Unit	LS500
加工范围 Machining scope		
X 轴行程 X axis travel	mm	500
Y 轴行程 Y axis travel	mm	500
Z 轴行程 Z axis travel	mm	260
主轴鼻端至工作台面距离 Spindle nose to table surface	mm	130-390
工作台 Table		
工作台尺寸 Table size	mm	500x650
T 型槽 T slot	mm	5x14x80
工作台负重 Table load	Kg	200
主轴 Spindle		
主轴转速 Spindle speed	rpm	24000/32000
主轴锥孔 Spindle taper	-	BBT30/HSK-E40
主轴电机功率 Spindle motor power	kW	9/11
主轴扭矩 Spindle torque	N.m	(7.2/8.6) / (5/8.5)
进给驱动 Feedrate		
切削进给 X/Y/Z Cutting feedrate X/Y/Z	m/min	30/30/30
快移速度 X/Y/Z Rapid traverse X/Y/Z	m/min	60/60/60
其它 Others		
刀库容量 ATC capacity	T	13
控制系统 Control system	-	Bosch Rexroth
机床重量 Machine weight	t	5
机床尺寸 Machine size	mm	2300x2100x2500

标准配置 Standard	选配配置 Option
1. 数控系统: 力士乐 MTX-Micro	1. 超精密 40000 转电主轴
2. 32000 转电主轴系统	2. 车削功能
3. 三轴高精度光栅尺	3. 数控分度盘 (第四轴)
4. 切削液冷却系统	4. 工件自动测量装置 (2D)
5. 气动、冷却、润滑系统	5. 刀具自动测量装置
6. 平衡系统	6. 粉尘及油雾收集器
7. 13 把半圆扇形伺服刀库	7. 大理石床身
1. Control system: Rexroth MTX-micro	1. Ultraprecise 40000 rpm built in spindle
2. 32000rpm built in spindle	2. Turning function
3. 3 axis linear scale	3. CNC rotary table(The 4th axis)
4. Coolant system	4. Workpiece probe
5. Pneumatic, cooling, lubrication system	5. Tool setter
6. balance system	6. Oil mist collector
7. 13T servo ATC	7. Polymer marble base



本公司随时进行研究改进工作，因此保有随时更改机床参数的权利，变更时恕不另行通知。
The company do the research and improvement any time, so we will be change the machine parameters without notice.

YS Series

数控滚齿机

CNC Gear Hobbing Machine

+ MECHANICAL 机床特点 CHARACTERISTICS

在齿轮制造中，高速干式滚齿机技术在提高工件质量和环境保护的同时，大大减少了切削时间和制造成本，YS3120CNC7 数控滚齿机是面向齿轮干式滚齿加工工艺而全新设计开发的具有当今国际先进水平的新一代数控高速干切自动滚齿机，是最新一代干切产品。

该机床是八轴、四联动环保型数控滚齿机，代表世界制造业环保、自动化、柔性化、高速、高效的发展趋势，体现了以人为本、绿色制造的设计理念。特别适合汽车、轿车变速箱齿轮等大批量、高精度的超干式滚齿加工。

In gear manufacturing, the technology of high-speed dry gear hobbing machine improves the quality of workpiece and environmental protection, and greatly reduces the cutting time and manufacturing cost. YS3120 CNC gear hobbing machine is a new generation of CNC high-speed dry gear hobbing machine, which is the latest generation of dry cutting products, which is designed and developed for dry gear hobbing processing.

The machine tool is a 7 axis, 4 linkage environmental protection CNC hobbing machine, which represents the development trend of environmental protection, automation, flexibility, high speed and high efficiency of the world manufacturing industry, and embodies the design concept of people-oriented and green manufacturing. Especially suitable for automobile, car gearbox gear and other large quantities, high precision ultra dry gear hobbing.



项 目 Item	单 位 Unit	YS-3115	YS-3118	YS-3120
最大加工直径 Max. machining diameter	mm	160	180	210
最大模数 Max. modulus	M	3	4	4
最大轴向行程 Max. axial travel	mm	350	300	300
加工齿数范围 Machining teeth range	Z	3-400	3-400	5-1000
滚刀最大回转角度 (A 轴) Max. rotation angle of hob (A-axis)	deg	±45	±45	±45
滚刀最大直径 × 长度 Max. diameter x length of hob	mm	Φ100×90	Φ110×130	Φ130×230
滚刀中心到工作台中心距离 Distance between hob center to table center	mm	10-190	10-160	30-180
滚刀中心到工作台面距离 Distance from hob center to worktable	mm	150-500	180-480	195-495
支撑顶尖到工作台面距离 Distance from tailstock center to worktable	mm	220-450	375-680	350-680
滚刀轴最高转速 (B 轴) Max. speed of hob shaft (B axis)	rpm	3000	3000	3000
滚刀主轴功率 Hob spindle power	Kw	12.5	12.5	22
刀具最大轴向串刀距离 Max. axial distance of tool string	mm	100	120	180
工作台最高转速 (C 轴) Max. speed of table (C-axis)	rpm	500	400	480
径向进给速度 (X 轴) Radial feed rate (X-axis)	mm/min	8000	8000	8000
切向进给速度 (Y 轴) Tangential feed rate (Y axis)	mm/min	1000	1000	4000
轴向进给速度 (Z 轴) Axial feed rate (Z axis)	mm/min	10000	10000	4000
刀杆直径 Hob bar diameter	mm	Φ22/Φ16/Φ13	Φ27/Φ22	Φ32
机床重量 Machine weight	t	5	8	13

标准配置	Standard	选配配置	Option
1. 力士乐 MTX-Micro 数控系统	1. Rexroth MTX micro CNC system	1. 定制工件夹具	1. Customized workpiece fixture
2. 全封闭防护	2. Full enclosure	2. 油雾分离装置	2. Oil mist separate
3. 彩色显示器	3. Color displayer	3. 定制自动化生产线	3. Customized automatic production
4. 集中定量润滑系统	4. Centralized quantitative lubrication system	4. 精密对刀加工装置	4. Precision tool setting device
5. 液压系统	5. Hydraulic system	5. 定制滚刀刀杆	5. Customized hob bar
6. 气动系统	6. Pneumatic system	6. 机外调刀架	6. Tool rest adjustment without the machine
7. 循环冷却系统	7. Circulating cooling system		
8. 电柜空调	8. Electric cabinet air conditioner		
9. 主轴水冷机	9. Water chiller		
10. 滚刀刀杆组件	10. Hob bar unit		
11. 滚刀锁紧装置	11. Hob clamping unit		
12. 排屑器及附件	12. Chip conveyor and accessories		



本公司随时进行研究改进工作，因此保有随时更改机床参数的权利，变更时恕不另行通知。
The company do the research and improvement any time, so we will be change the machine parameters without notice.

F Series

高速精密雕铣机

High Speed Engraving And Milling Machine

+ MECHANICAL 机床特点 CHARACTERISTICS

最高转速 24000rpm 的内藏式电主轴 (可选配 ISO30 或 HSK40) 提供高精度加工及精细的表面加工, 精密模具加工只需一次加工即可完成, 无须将模具卸下作抛光处理, 有效缩短模具加工和时间成本。

The built in spindle (option: ISO30 or HSK40) with the maximum speed up to 24000 rpm provide high precision machining and fine surface machining, mold processing can be finished in one time only without polishing, it will be reduce the time cost of mold processing.



项 目 Item	单位 Unit	F650	F870	F1614	F2015
加工范围 Machining scope					
X 轴行程 X axis travel	mm	600	800	1600	2000
Y 轴行程 Y axis travel	mm	500	700	1400	1500
Z 轴行程 Z axis travel	mm	240	300	700	700
主轴鼻端至工作面距离 Spindle nose to table surface	mm	50-400	40-340	250-950	120-820
工作台 Table					
工作台尺寸 Table size	mm	700x500	850x700	1700x1300	2000x1400
T 型槽 T slot	-	5x14x100	5x14x125	7x22x185	11x18x120
工作台负重 Table load	Kg	400	600	4000	5000
主轴 Spindle					
主轴转速 Spindle speed	rpm	24000	24000	12000	6000
主轴锥度 Spindle taper	-	ER32	ER32	BT40	BT50
主轴电机功率 Spindle motor power	kW	5.5	5.5	11	15
驱动进给 Feedrate					
切削进给 X/Y/Z Cutting feedrate X/Y/Z	m/min	8	8	10	6
快移速度 X/Y/Z Rapid traverse X/Y/Z	m/min	12	12	20	10
其它 Others					
控制系统 Control system	-	台湾新代 SYNTEC	台湾新代 SYNTEC	台湾新代 SYNTEC	台湾新代 SYNTEC
机床重量 Machine weight	t	3	4	13.5	15
机床尺寸 Machine size	mm	1890X1940X2300	2200X2300X2480	4900X3152X3330	5100X2700X3500

标准配置	Standard	选配配置	Option
1. 新代 21MA 数控系统	1. Control system: SYNTEC 21MA	1. 数控系统: 三菱 M80A	1. Control system: MITSUBISHI M80A
2. 24000 转电主轴 (F650、F870)	2. 24000rpm built in spindle (F650、F870)	2. 数控分度盘 (第四轴)	2. CNC rotary table(The 4th axis)
3. 主轴恒温冷却系统	3. Spindle cooling system	3. 对刀仪	3. Tool setter
4. 气动、集中润滑系统	4. Pneumatic.lubrication system	4. 副工作台	4. Auxiliary worktable
5. 机床带顶全防护	5. Full enclosure with top cover	5. 24000/30000 转电主轴	5. 24000/30000 rpm built in spindle
6. 三色灯、照明灯	6. 3-color signal lamp, working light		
7. 标准附件及相关文件	7. Standard accessories		
8. 常用维修工具	8. Common service tools		



本公司随时进行研究改进工作, 因此保有随时更改机床参数的权利, 变更时恕不另行通知。
The company do the research and improvement any time, so we will be change the machine parameters without notice.