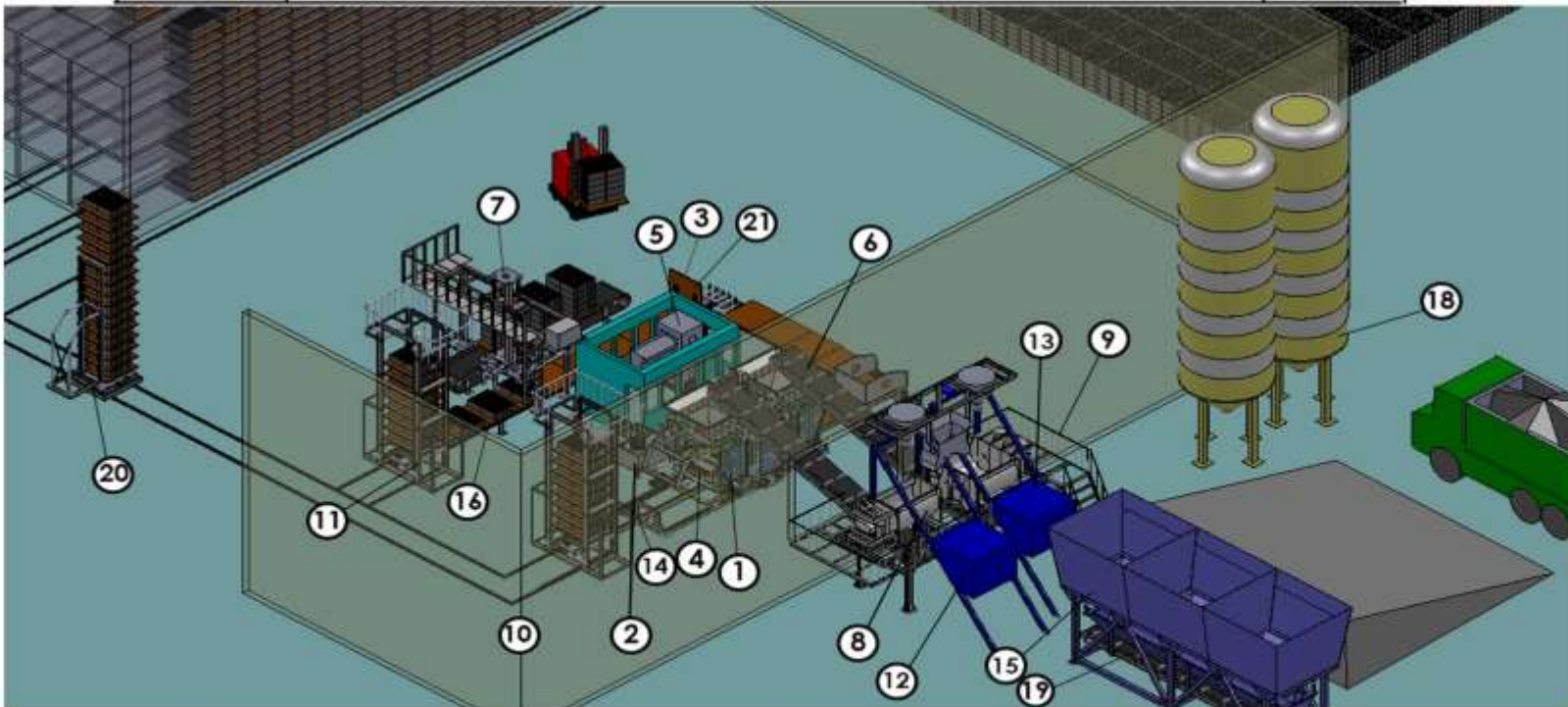


ARADSAN TPRN 1824 II- 30 H Full Automatic

Double Hooper Machine make curbstone – hollow blocks – pavers

Unit	Description	Page
1	TPRN 1824 II FULL (H.30) pallet size:120*100	2
2	Machine HIDRAULIC POWER UNIT	5
3	PALLET CLEANING BRUSH -120 cm	6
4	PRODUCT CLEANING BRUSH- 120 cm	6
5	PLC CONTROLLED ELECTRIC PANEL	7
6	QUADRATED BELT	9
7	COLLECTING ROBOT	10
8	MIXER Elba Design (1m3) –two hopper base and upper materials	11
9	MIXER PLATFORM	12
10	Elevator	13
11	De- elevator	14
12	MORTAR CONVEYOR 8 mt	15
13	SAND CONVEYOR 8 mt	16
14	TRANSFER CONVEYOR 3 mt	17
15	SAND HOPPER 15*4 AGGREGA TOTAL 60 m3 - 3 Packet	18
16	PRODUCT CARRYING BAND	20
17	PAVING STONES MOULDS	21
18	CEMENT SILO 60 TON - 2 PCS	22
19	UNDER HOOPER WEIGHNING BELT (12 m)	23
20	Finger car automatic	24
21	Pallet Returned	25
22	Gallery photos	26



1 . Machine TP.RN 1824 II- FULL



Automatic Concrete Block Machine TP.RN1824 II Double can produce different kinds of concrete parts (curbstone, block, pavers ' interlocking bricks ', flower box). It is presented in two types (single packet and double packet). The production capacity in the double packet system is %10 more than single packet , and the other difference is in the dual-color production capabilities of the double packet system.

The Automatic Concrete Block Machine TP.RN1824 I (single Packet) can produce only one color products and the Automatic Concrete Block Machine TPRN1824 II (double packet) can produce one color and two color products.

The advantage of double hopper is that the downward part of pavers consist of the coarse-grained materials to increase the compressive strength of the flooring and the upper part consist of fine-grained materials because of the beauty of the product.

This machine is automatic. It is also possible to upgrade to full-automatic machine .

Machine 1824 II with 12 ton weight- single layer pallet



1/1: Heavy machine frame was made from special industrial box that can tolerate pressure from jacks and shakes of vibrators.

1/2: Specification of tools that was used in TP.RN model 1824 II :

pump generator : SIEMENS or Vem of Germany

Vibrate generator : Germany SIEMENS

All of electromotor regulation : DEG

Jacks piston tubes : Germany type (BOSH OR BOHLER Mark)

Moulds are made from integrated sheet (STD 52)

Hydraulic hoses : Italy or Germany (flex)

Machine control taps : Italian mark - DEPLOMAT

Moulds are made of ST52 sheets. types and parts that are exposed for corrosion will be made from non corrosion sheets

control panel includes (TELE- SIEMENS-PLC) made in Germany, France TELE pieces and touch screen 15 inch monitor

All of micro switches and telemechanic sensors are of France or Muller Germany .
 Mixer internal sheets are made of Sweden Hradox OR Dillidur Germany.
 Radiate oil cooling system is cooled by air.

1/3: production capacity:

Products	Dimension	Capacity
Paver	200x100x60 mm	700 m ²
CurbStone	500x500x150 mm	3600 Pcs
CurbStone	500x350x150 mm	4000 Pcs
Hollow Block	400x200x200 mm	8000 Pcs

1/4 : Technical Specifications :

Machine function system	Hydraulic – vibration
Control system	Manual
Generators power	31 KW
Hydraulic pump generator	20 KW
Pump pressure amount	320 BAR
Oil tank capacity	500 LIT
Packets capacity	1300 LIT
capacity	165 LIT
Palet size	120 * 100
Effective size	110 * 90
Minimum height	40 MM
Maximum height	300 MM
Machine dimensions (Meter)	width 2 - high 3 - length 7
Weight	14000 KG
Time cycle	15 - 30 sec

2 . Machine HIDRAULIC POWER UNIT



3 . Pallet Cleaning Brush

To clean and remove concrete pieces from the pallet .
A special height adjustable brush is mounted on a frame structure and powered by an electric gear motor. The size of the brush is 120 cm .



4 . Product Cleaning Brush

To brush the surface of the product and remove fins. The brush is fixed at the base frame with a hand wheel and a through shaft. Height adjustment synchronized on both sides by a crank fixed on one side. The rotating spiral brush is powered by an electric gear motor and is equipped with a cleaning bar. The size of the brush is 120 cm .



5 . PLC Controlled Electric Panel

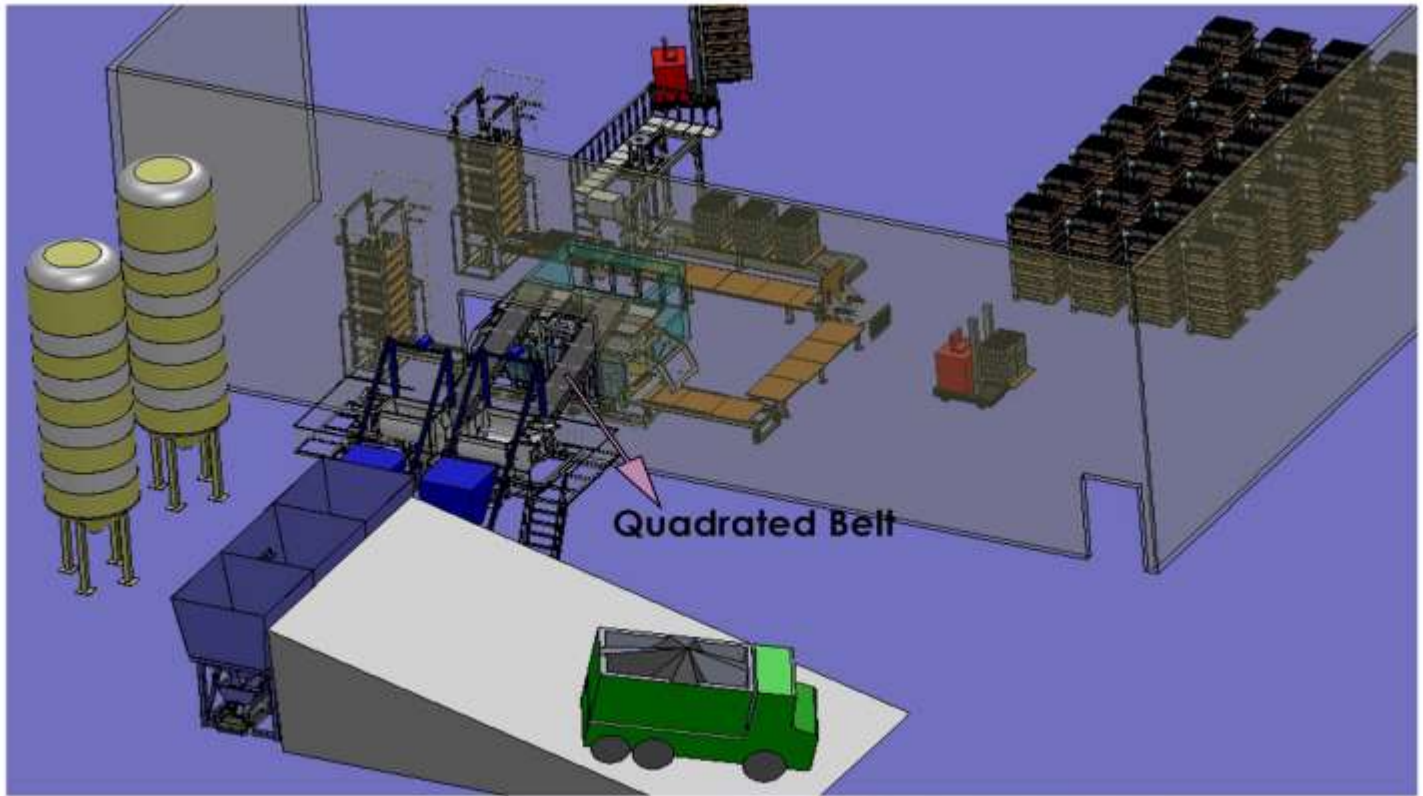
Produced tableau is in 200*100*60 dimensions and mounted pieces on tableau are of European marks. All of pieces related to automatic key- temperature key- contactor- miniature fuse- phase control and used representation are of France tele mechanic mark and used mark is of France Legerand mark and used terminals are of Germany Wide mark. Wiring cable head and cable number are of Sweden Loper mark and all of used cables are of Zar Sim mark.



Piece name	Type	Mark / model	Electro motor power	Head banding type	Quantity	utility
Automatic key	100 A	SIEMENS	-----	-----	1	Turn on- off machine
Temperature key	37-50 A	SIEMENS	30 kw	Star Triangle	1	Turn on - off hydraulic electro motor
Temperature key	6-10 A	SIEMENS	4 kw	Star	2	Turn on- off high vibrator (right turner)
Temperature key	12-18 A	SIEMENS	7/5 kw	Star	4	Turn on- off low vibrator (right turner)
Temperature key	4-6 A	SIEMENS	2/2 kw	Star	1	Turn on- off Chain band (left & right)
Contactora	D 50	SIEMENS	30 kw	Star Triangle	1	To set up Hydraulic Electro motor Right Turner
contactora	D 18	SIEMENS	4 kw	Star	1	To set up high vibrators hydraulic pump (right turner)
Contactora	D 32	SIEMENS	7/5 kw	Star	1	To set up low vibrators hydraulic pump (right turner)
Contactora	D 12	SIEMENS	2/2 kw	Star	1	To set up chain band electro motor (left & right turner)
Command keys	A 10	SIEMENS	-----	-----	20	To start contactors
Chain start	A 10	SIEMENS	-----	-----	10	To start contactors
Chain stop	A 10	SIEMENS	-----	-----	5	To start contactors
Socket	A 16	SIEMENS	-----	-----	12	To easy transporting machine

6. Quadrated Belt

Heavy profile and tube structure, Belt run on height adjustable rollers with bearings. Boards have guides on both sides. Proximity switches control positioning of the boards. Inverter for variable speed and smooth ramping powers the belt.



7 . Collecting Robot

Dry construction materials collector of PLC robot from machine palette on work palette- TP.RN 1824



Control system	Full automatic PLC
Hydraulic generator power	10 KW
dynamic generator power	1/5 KW
Axis X dynamic range	120 CM
Axis Y dynamic range	300 CM
Pump capacity	37 LIT
Oil tank capacity	120 LIT
Total capacity of robot	500 KG
Opening	125 * 110 CM



8 . Mixer

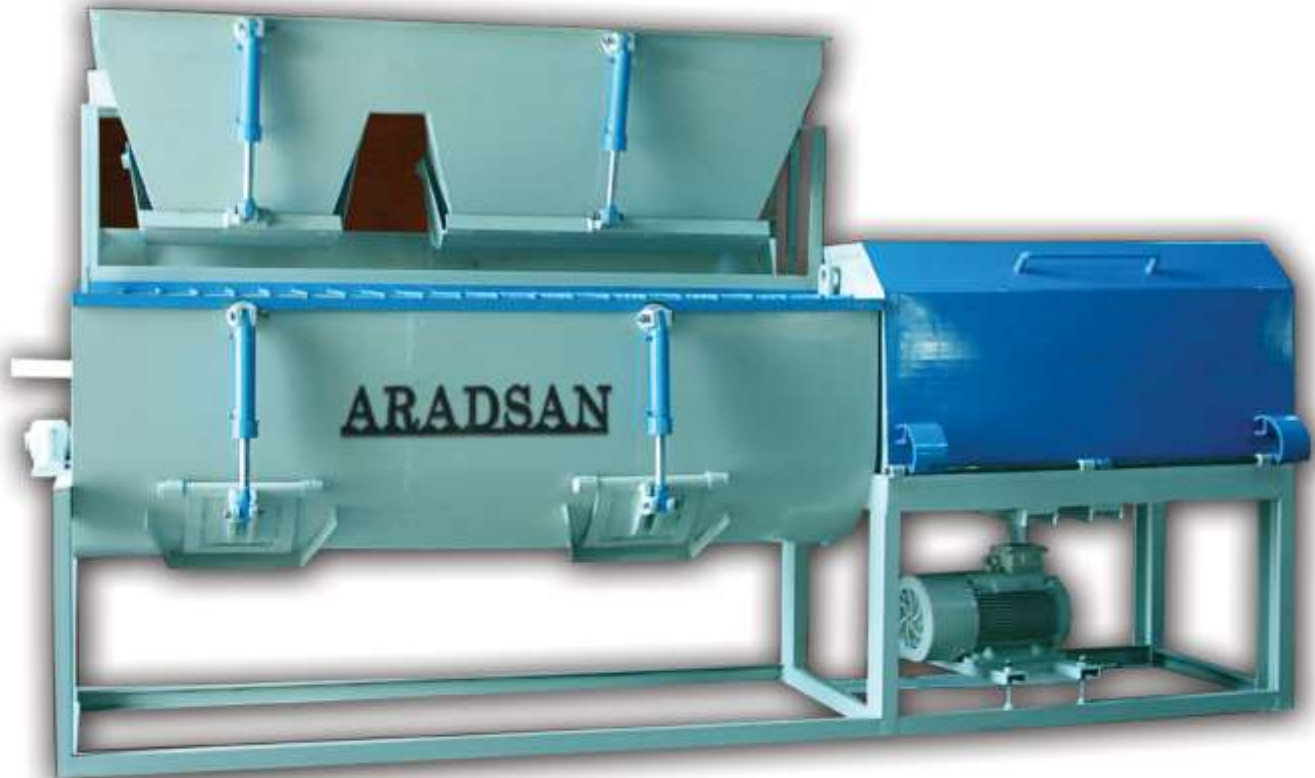
It has capability for dry and wet concrete production for kreb and concrete plaque and blocks

Production capacity is 10- 15 m³ per hour

Outer sheet is 10 mm and inner sheet is 12 mm (Sweden Hardox or Divides sheets)

Pillars are of non corrosion sheets (ST60)

Original generator Power	Packet Generator	Capacity	Cycling speed in minute	Production amount in hour	Tank
30 hp	5 KW	500 L	50 PRM	12 m ³	Double



9 . Mixer Platform

Mixer stand and stand is designed to place a two-pack mixer in line .

Materials on the band should be poured into the mixer faster and with better quality and should enter the machine's bags from inside the mixer.



11 . Elevator

Row	Description	Characteristics
1	Function type	Full automatic
2	Height	5 meter
3	Main legs of machine	Number 18 drain pipe
4	Floors' number	15 floors, floors interval 50 cm
5	Generator	One 7 horse brake gear box generator
6	Power tableau and related control	With good quality and creditable marks



Elevator

10 . De - elevator

Row	Description	Characteristics
1	Function type	Full Automatic
2	Machine height	5 meter
3	Main Frame Machine	Number 18 drain pipe
4	Floors' number	15 floors, floors interval 50 cm
5	Generator	One 7 horse brake gear box generator
6	Power tableau and related control	With good quality and creditable marks



De-Elevator

12 . Mortar Conveyor 8 mt

This conveyor is made to transfer Cumin materials from batching to mixers



13 . Sand Conveyor 8 mt

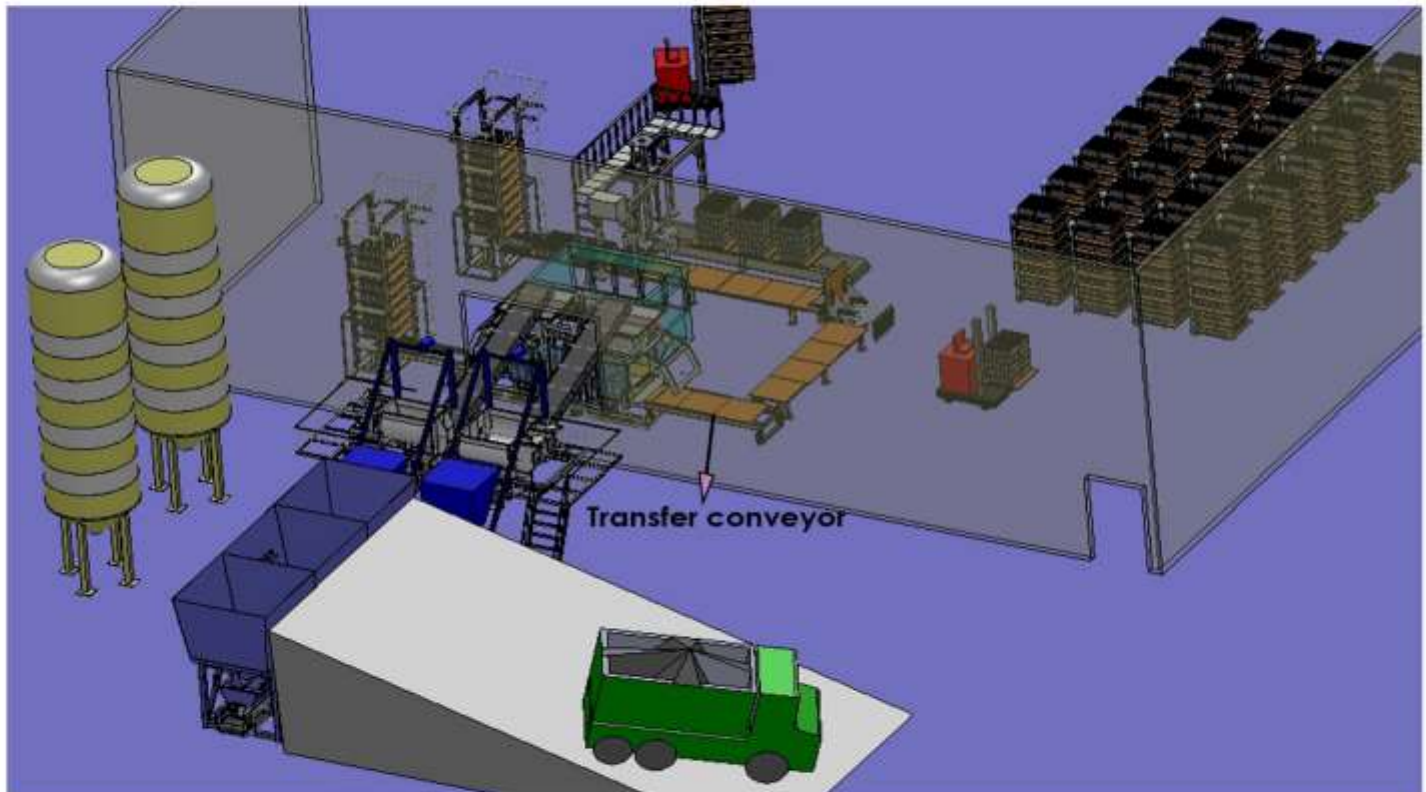
This conveyor is made to transfer facing materials from batching to mixers



14 . Transfer Conveyor

Heavy profile and tube structure, Belt run on height adjustable rollers with bearings. Boards have guides on both sides.

Conveyor :	
Length	10 - 1.5 M
width	60 CM
Generator power	1/5 KW
Chain type	SIZE 60
Machine chassis 14	Belgian
Operation system	Automatic
Power model	Helical
Model	New



15 . Sand Hopper 15*4 Aggrega Total 60 m3 - 3 Packet

Batching plants (Weighing System) has the ability to weigh different types of materials.

Aradsan Machine supplies complete batching plants for the optimum and efficient weighing of all materials (e.g.: sand, aggregates, cement, water, pigments and admixtures). The ability of weighing the amount of cement and water is possible, so it's suitable for mixing and grading before the process of mixing all inputs accurately with high sensitivity

Weighing systems act as a digital weighing instrument that is monitored by screens installed in the system.

This system has weighing function for three different grading, which are separated by feeders.

The cement is weighed by cement weighers, where the amount of cement is driven by cement screws.

The amount of water entering in the system is littered with digital water meters and finally, the materials (water – cement – grading types) are prepared for the mixer process.

The batching system has weighing buckets that can be fed by a loader or a ramp.

Electro-vibrations are installed on the system body and batching by using electro-vibrations can direct the materials to the spot.

After weighing, an conveyor belt transportes the materials to the outside.

After weighing, the batching plant exits materials by using an electro-motor.

All equipments of batching made in German and Italian

BATCHING (WEIGHING SYSTEM) HAS THREE DIFFERENT MODELS:

Batching 20-40: Weighing capacity is 20 m3 of wet materials and 40 m3 of dry material.

Batching 30-60: The ability to weigh 30 m3 of wet materials and 60 m3 of dry materials.

Batching 40-80: Weighing capacity is 40 m3 of wet materials and 80 m3 of dry material.



16 . Product Carrying Band

Heavy profile and tube structure, Belt run on height adjustable rollers with bearings. Boards have guides on both sides.



Product Carrying Band



17 . Paving Stones Moulds

One set mould , made at the request of the customer , with intergrated sheet anti wear with a 7 year warranty .



18 . Cement Silo 60 Ton - 2 PCS

Horizontal plant batching with 20 m³ capacity of wet concrete per hour and 40 m³ dry concrete per hour .



19 . Under Hooper Weighning Belt (12 m)

Heavy profile and tube structure, Belt run on height adjustable rollers with bearings. Boards have guides on both sides. Proximity switches control positioning of the boards. Inverter for variable speed and smooth ramping powers the belt.



20 . Finger Car Automatic

The finger car is composed of a frame structure with the fork mast to which the forks for receiving the manufacturing pallets are fixed. Lifting and lowering of the fork mast is executed with a hydraulic cylinder which is controlled by a current regulating valve . The travel gear is equipped with a front mounted double axle .the bearing surfaces of the six wheels are hardened. The power supply of the finger car runs through an electric cable reel with magnetic clutch up to a length of 35 m.

Electric Control:	PLC Siemens
Max. Load:	10 t
Number of floor	15 pieces
Layer distance:	300 mm
Total depth of board:	1.100 mm



21 . Pallet Returned

In order to turnover palette for lengthening palette life twice and avoid palette deforming

Automatic systems' function which is dependant to PLC system	
Digitals number	4
Stops number	2
Function type	Linear
Generator power	2/2 KW
Cycling angle	360° cycle angle
Angle of any course	90 °
Width	Proportional to palette (110 * 110)



16 . Photo of products

