

Su Gelecek Ve Yaşamdır Anahtarı **Ayfen** Makinadır  
*Water is life and future. The key for that is Ayfen Machinery*

 **AYFEN**  
MAKİNA





### FİRMA PROFİLİ,

2007 Yılında ticari hayatına başlayan firmamız günümüzde halen aktif olarak devam etmektedir. Günümüz teknolojisine ayak uydurarak ve gelişim göstererek topluma faydalı bir firma olmaktayız. Dalgıç, pompa, hidrofor çeşitlerinde, tarım ve inşaat sektörlerinde siz değerli müşterilerimizin taleplerine yanıt vermek için yoğun tempoda çalışmalarımıza devam etmekteyiz. Dünya'daki teknolojik gelişmeleri ve enerji verimliliği çalışmalarını yakından takip ederek sürekli olarak geleceğe yatırım yapmaktadır.

### COMPANY PROFILE,

*Our company which started its commercial life in 2007 is still active today. We are a beneficial company to society by keeping up with today's technology and developing. Submersible, pump, booster varieties, agricultural and construction sectors to respond to the demands of our valued customers we continue to work intensively. It continuously follows the technological developments and energy efficiency studies in the world and continuously invests in the future.*

Su Gelecek Ve Yaşamdır Anahtarı Ayfen Makinadır



# VİZYON & MİSYON

## **VİZYON:**

Tarım ve İnşaat sektörlerinde hayatı kolaylaştırmak tüm topluma yayılmasını sağlamak Dünya markası olmak.

## **VISION:**

*Facilitating life in Agriculture and Construction sectors  
Ensuring the spread of life to the whole community*

## **MİSYON:**

En değerli paydaşlarımız olan çalışanlarımız ile birlikte koşulsuz müşteri memnuyetini sağlamak, uluslararası kalite standartları çerçevesinde toplumların seçkin elçisi olmak

## **MISSION:**

*To provide unconditional customer satisfaction with our employees, our most valuable stakeholders, to be the distinguished ambassador of the societies in accordance with international quality standards.*



**COVERCO MOTOR / COVERCO MOTORS**



**PEDROLLO MOTOR / PEDROLLO MOTORS**



**CAPRARI MOTOR / CAPRARI MOTORS**



**İMPO MOTOR / İMPO MOTORS**



**PEDROLLO POMPA / PEDROLLO PUMPS**



**İMPO POMPA / İMPO PUMPS**



**DEEPS POMPA/DEEPS PUMPS**



**AYFEN DALGIÇ/AYFEN SUBMERSIBLE PUMPS**



**6" MOTORS**



**7" MOTORS**



**8" MOTORS**



**10" MOTORS**



**6" KROM POMPA/6" STAINLESS STEEL PUMPS**



**7" KROM POMPA/7" STAINLESS STEEL PUMPS**



**8" KROM POMPA/8" STAINLESS STEEL PUMPS**



**10" KROM POMPA/10" STAINLESS STEEL PUMPS**



**6" DÖKÜM POMPA/6" CAST IRON PUMPS**



**7" DÖKÜM POMPA/7" CAST IRON PUMPS**



8" DÖKÜM POMPA/8" CAST IRON PUMPS



10" DÖKÜM POMPA/10" CAST IRON PUMPS



QB60 PREFERİKAL POMPA/QB60 PERIPHERAL PUMPS



KENDİNDEN EMİŞLİ JET POMPALAR/SELF-PRIMING JET PUMPS



SANTRİFÜJ POMPALAR/CENTRIFUGAL PUMPS



ÇİFT ÇARKLI SANTRİFÜJ POMPALAR/DOUBLE STAGE CENTRIFUGAL PUMPS



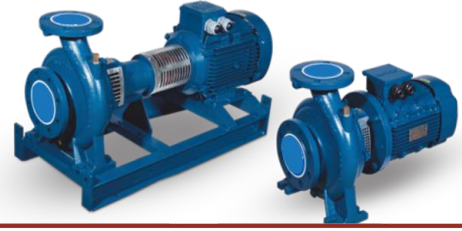
**PASLANMAZ SANTRİFÜJ POMPALAR**  
STAINLESS STEEL CENTRIFUGAL PUMPS



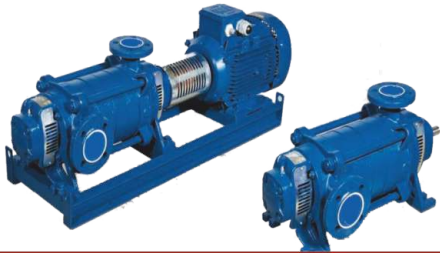
**PASLANMAZ ÇOK KADEMELİ POMPA**  
STAINLESS STEEL MULTI-STAGE PUMPS



**YATAY MİLLİ,TEK KADEMELİ SANTRİFÜJ POMPA**  
HORIZONTAL SINGLE STAGE CENTRIFUGAL PUMPS



**YATAY MİLLİ,MONOBLOK SANTRİFÜJ POMPA**  
HORIZONTAL SINGLE STAGE MONO-BLOCK CENRIFUGAL PUMPS



**YATAY MİLLİ,ÇOK KADEMELİ,SANTRİFÜJ POMPA**  
HORIZONTAL MULTI-STAGE CENTRIFUGAL PUMPS



**DÜŞEY MİLLİ KADEMELİ POMPA**  
VERTICAL MULTI-STAGE CENTRIFUGAL PUMPS





**DOMESTİK HİDROFOR/DOMESTIC HORIZONTAL BOOSTER SETS**



**80 SERİSİ PAKET HİDROFOR/80 SERIES BOOSTER SETS**



**90 SERİSİ PAKET HİDROFOR/90 SERIES BOOSTER SETS**



**100 SERİSİ PAKET HİDROFOR/100 SERIES BOOSTER SETS**



**130 SERİSİ PAKET HİDROFOR/130 SERIES BOOSTER SETS**



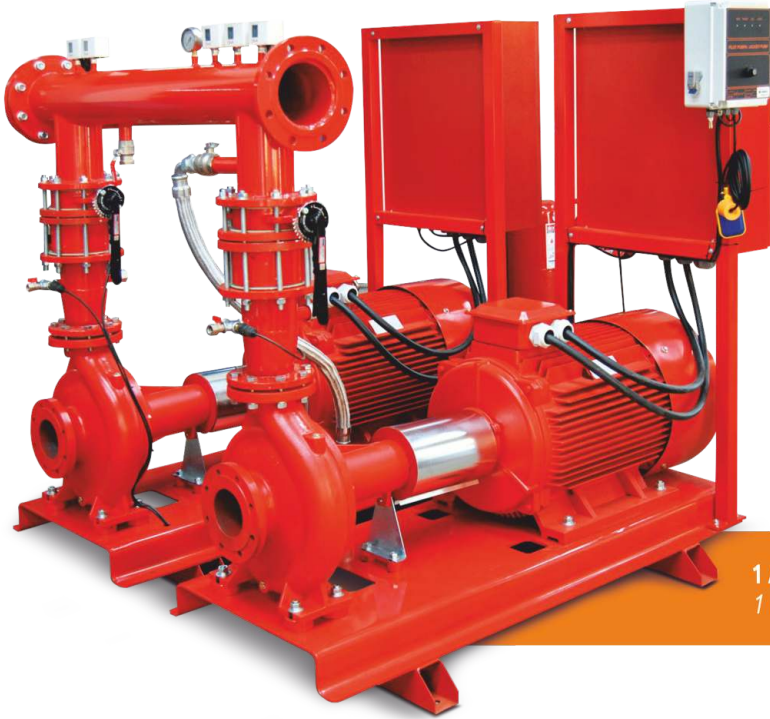
**160 SERİSİ PAKET HİDROFOR/160 SERIES BOOSTER SETS**

# YANGIN

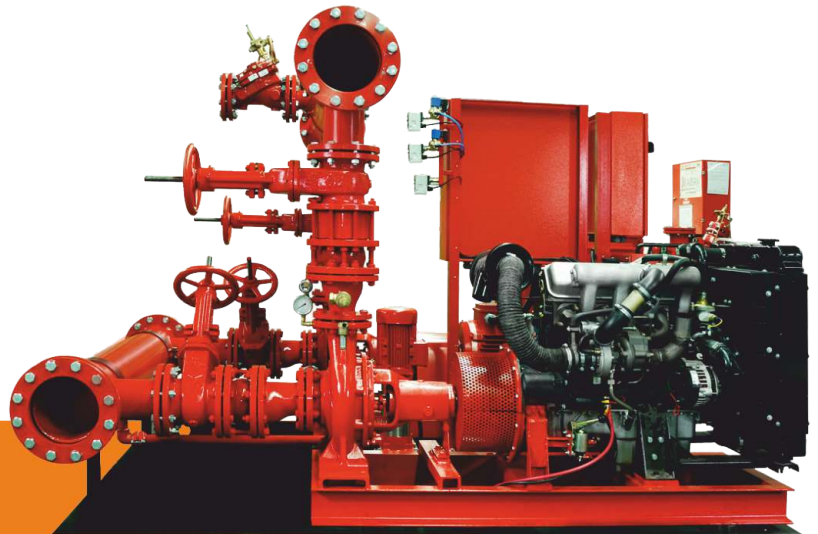
## SÖNDÜRME SİSTEMLERİ

*FIRE FIGHTING SYSTEM*





1 ASIL ELEKTRİK+1 YEDEK ELEKTRİKLİ MOTORLU+1 JOKEY (EEJ)  
1 MAIN ELECTRIC+1 RESERVE ELECTRIC MOTOR+ 1 JOCKEY (EEJ)



1 ASIL ELEKTRİK+1 YEDEK DİZEL MOTORLU+1 JOKEY (EJ)  
1 MAIN ELECTRIC+1 RESERVE DIESEL MOTOR+ 1 JOCKEY (EDJ)

.Tam otomatiktir,  
.Montajı kolaydır,  
.Enerji sarfiyatı düşüktür,  
.Sesli alarm sistemine sahiptir,  
.Dar alanlarda kullanıma uygundur,  
.Tesisat basıncının düşmesi durumunda jockey pompa devreye

.Full automatic,  
.Easy montage,  
.Low energy consumption,  
.Audible alarm unit,  
.Suitable for use in confined spaces,  
.The jockey pump is activated if the installation pressure down.



**TEMİZ SU DRENAJ POMPALARI**  
SUBMERSIBLE DRAINAGE PUMPS



**TEMİZ SU DRENAJ POMPALARI**  
SUBMERSIBLE DRAINAGE PUMPS



**TEMİZ SU DRENAJ POMPALARI**  
SUBMERSIBLE SEWAGE PUMPS



**TEMİZ SU DRENAJ POMPALARI**  
SUBMERSIBLE SEWAGE PUMPS



**TEMİZ SU DRENAJ POMPALARI**  
SUBMERSIBLE SEWAGE PUMPS(GRINDER)



**TEMİZ SU DRENAJ POMPALARI**  
SUBMERSIBLE SEWAGE PUMPS (GRINDER)



**ENDÜSTRİYEL TİP FOSEPTİK POMPALAR**  
*INDUSTRIAL TYPE SEWAGE PUMPS (GRINDER)*



**ENDÜSTRİYEL TİP FOSEPTİK POMPALAR**  
*INDUSTRIAL TYPE SEWAGE PUMPS (GRINDER)*



**ENDÜSTRİYEL TİP FOSEPTİK POMPALAR**  
*INDUSTRIAL TYPE SEWAGE PUMPS (GRINDER)*



**SOĞUTMA CEKETLİ, PASLANMAZ ÇARKLI DRENAJ POMPALARI**  
*SUBMERSIBLE DRAINAGE PUMPS*



**SOĞUTMA CEKETLİ, KARIŞTIRICILI FOSEPTİK POMPALAR**  
*SUBMERSIBLE SEWAGE PUMPS*



**ELEKTROMANYETİK DALGIÇ POMPALAR**  
*SUBMERSIBLE ELEKTROMAGNETIC PUMPS*



**DİKEY GENLEŞME TANKLARI**  
*VERTICAL TYPE EXPANSION TANK*



**YATAY GENLEŞME TANKLARI**  
*HORIZONTAL TYPE EXPANSION TYPE*



**AYAKLI DİKEY GENLEŞME TANKLARI**  
*VERTICAL TYPE EXPANSION TANK*



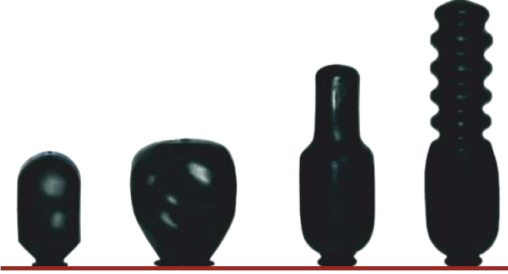
**SİRKÜLASYON POMPALARI**  
*CIRCULATION PUMPS*



**FREKANS KONTROLLÜ SİRKÜLASYON POMPALARI**  
*FREQUENCY CONTROLLED CIRCULATION PUMPS*



**FREKANS KONTROLLÜ İKİZ TİP SİRKÜLASYON POMPALARI**  
*FREQUENCY CONTROLLED TWIN TYPE CIRCULATION PUMPS*



MEMBRANLAR / MEMBRANES



FLEX HORTUMLAR / FLEX HOSES



BASINÇ ŞALTERLERİ / PRESSURE SWITCHES



MANOMETRELER / MANOMETERS



BEŞ YOL BAĞLANTISI / FIVE WAY CONNECTION



BEŞYOLLU ÇEKVALFLER  
FIVE WAY CONNECTION WITH CHECKVALVES



**ÇEKVALFLER / CHECKVALVES**



**MEMBRAN ASKISI / MEMBRANE HOLDER**



**KONDANSATÖR / CAPACITOR**



**HİDROMAT / AUTOMATIC PUMP CONTROLLER**



**TEMİZ SU FLATÖRLER / CLEAN WATER FLOAT SWITCHES**



**ATIK SU FLATÖRLER / WASTE WATER FLOAT SWITCHES**





ELASTOMERLİ VANA / RESILIENT SPATED GATE VALVE



TAM GEÇİŞLİ KÜRESEL VANA / BALL VALVE (FULL BORE, FLANGED)



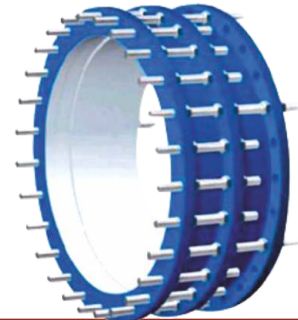
A TİPİ SULAMA HİDRANTI / A TYPE IRRIGATION HYDRANT



KELEBEK VANA / BUTTERFLY VALVE



Y TİPİ FLANŞLI PİSLİK TUTUCU / STAINER (FLANGED Y TYPE)



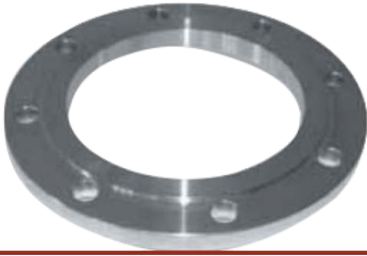
DEMONTAJ PARÇASI / DISMANTLING JOINT



TEK KÜRELİ VANTUZ / SINGLE AIR RELEASED VALVE



ÇİFT KÜRELİ VANTUZ / AIR RELEASED VALVE DOUBLE



DÜZ FALNŞ / FLAT SLIP-ON FLANGE



DÜZ KÖR FLANŞLAR / FLAR BLIND FLANGE SLIP-ON



YER ÜSTÜ YANGIN HİDRANTI / ABOVE GROUND FIRE HYDRANT



HİDRANT ANAHTARI / HYDRANT KEY



**YANGIN DOLABI / FIRE CABINET**



**N ÖKÇE / N-HEEL**



**KAPLİN ERKEK / MALE ADAPTOR**



**KAPLİN MANŞON / COUPLING**



**KAPLİN TE / TEE**



**KAPLİN ERKEK TE / MALE TEE**



KAPLİN DİRSEK / ELBOW



KAPLİN ERKEK DİRSEK / MALE ELBOW



KAPLİN REDÜKSİYON TE / REDUCING TEE



KAPLİN REDÜKSİYON MANŞON / REDUCING COUPLING



KAPLİN REDÜKSİYON DİRSEK / REDUCING ELBOW



KAPLİN KÖR TAPA / END CAP



**KAPLİN DIŐI (PASLANMAZ METAL YÜZÜKLÜ)**  
FEMALE ADAPTOR (STAINLESS STEEL REINFORCEMENT RING)



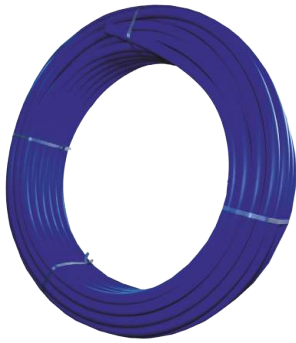
**KAPLİN DIŐI TE(PASLANMAZ METAL YÜZÜKLÜ)**  
FEMALE TEE FEMALE ADAPTOR (STAINLESS STEEL REINFORCEMENT RING)



**KAPLİN DIŐI DİRSEK (PASLANMAZ METAL YÜZÜKLÜ)**  
FEMALE ELBOW (STAINLESS STEEL REINFORCEMENT RING)



**KAPLİN ANAHTAR (SOMUN İÇİN) / FITTING SPANER (FOR NUT)**



**KANGAL BORU / COIL PIPE**



**PVC KOLON BORUSU / PVC COLUMN PIPES**



**DÖKÜM MAŞON / CASTING COUPLING**



**DÖKÜM NİPEL / CASTING NIPPLE**



**DÖKÜM DİRSEK / CASTING ELBOW**



**DÖKÜM TE / CASTING TEE**



**DÖKÜM REDİKSİYON / CASTING REDUCING**



**KONİK REKOR / CONICAL RECORD**



**GALVANİZ DEMİR BORU / GALVANIZED IRON PIPE**



**ELEKTRİK DİREĞİ / ELECTRIC POLE**



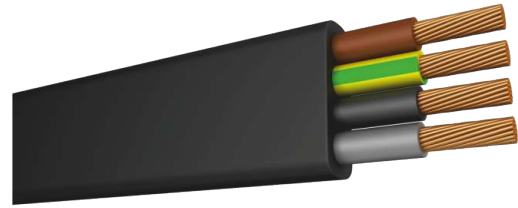
**ÇIPLAK ÇELİK ÖRGÜLÜ TEL / SWALLOW WIRE**



**ÇIPLAK BAKIR ÖRGÜLÜ TEL / BARE COPPER BRAIDED WIRE**



**ELEKTRİK KABLolari / ELECTRIC CABLES**



**DALGIÇ KABLolari/SUBMERSIBLE CABLES**



**AYAKLI PANO / FREE STANDING PANEL**



**KONTROL ÜNİTESİ / CONTROL UNIT**



**BÜYÜK PANO / LARGE ELECTRIC PANEL**



**KOMPANZASYON PANOSU / COMPENSATION PANEL**



**TRAFO PANOSU / TRANSFORMER PANEL**



**DİJİTAL PANO / DIGITAL PANEL**





**TRAFO / TRANSFORMER**



**SEKSİYONEL / SECTIONAL**



**KAPALI KABİNLİ JENERATÖR / CLOSED CABINET GENERATOR**



**AÇIK KABİNLİ JENERATÖR / OPEN CABINET GENERATOR**



**ENDÜSTRİYEL SU ARITMA SİSTEMLERİ  
INDUSTRIAL WATER TREATMENT SYSTEMS**



**EVSEL SU ARITMA SİSTEMLERİ  
DOMESTIC WATER TREATMENT SYSTEMS**

## FREKANS KOVERTÖRLÜ HİDROFORLAR

### FREQUENCY CONVERTORED HYDROPHORES





## HDPE BORULARI

### HDPE PIPE





T : + 90 545 337 15 70  
Kamberiye Mah. Harran Üniversitesi  
Cad. No: 24 / B - 19  
**Haliliye / ŞANLIURFA**

export@ayfenmakina.com  
ayfenmakina@hotmail.com  
www.ayfenmakina.com



T : 0414 312 00 22 • 0505 605 46 36