



**KENAR KONTROL
SİSTEMLERİ**

EDGE CONTROL
SYSTEMS

UEC02 EDGE CONTROL SYSTEMS

**USER GUIDE
2020**

Table of contents

General and Technical Features.....	1
Technocal Dimensions.....	2
Device Connection and Wiring Flowchart.....	3
Installation and Commissioning Flowchart	4
Device Key User Guide.....	5
Device Parameter.....	6
Precautions For Safe Use and Installation.....	8
Our Contact Information.....	9

UEC02
TR

IMPROVE PERFORMANCE WITH OUR TECHNOLOGY

GENERAL FEATURES

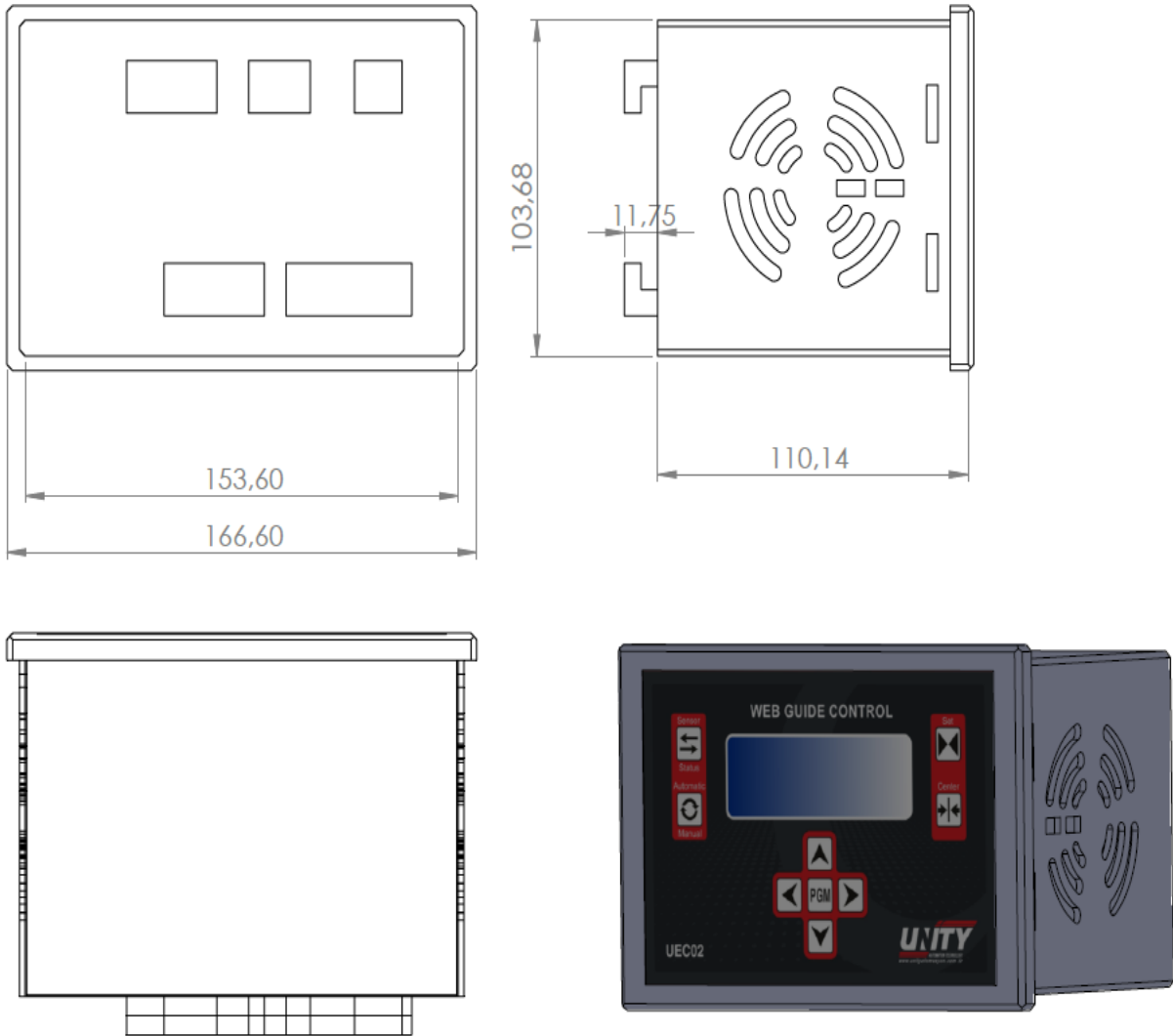
- ◆ Microprocessor base
- ◆ Advanced hardware and software
- ◆ High sensitivity
- ◆ Basic use
- ◆ Safe and fast data communication
- ◆ High response speed
- ◆ Use at high speeds
- ◆ Ability to take control of product oscillation
- ◆ Ability to keep memory , if energy cut

TECHNICAL FEATURES

Operating Voltage	220V AC
Operating Temperature	0-55 °
Response Time	1 ms
Connection Style	Cross Terminal Groups
Device Weight	<750 gr
Type of Mounting	Panel Type
Dimensions	177x113x125(G*Y*D)
Indicator	4 x 20 LCD Display
Inputs	Sensor, External Start, Manuel Right and Left ,Right and Left Limit
Outputs	Dijital Directional, Limit Time-Adjustable contact

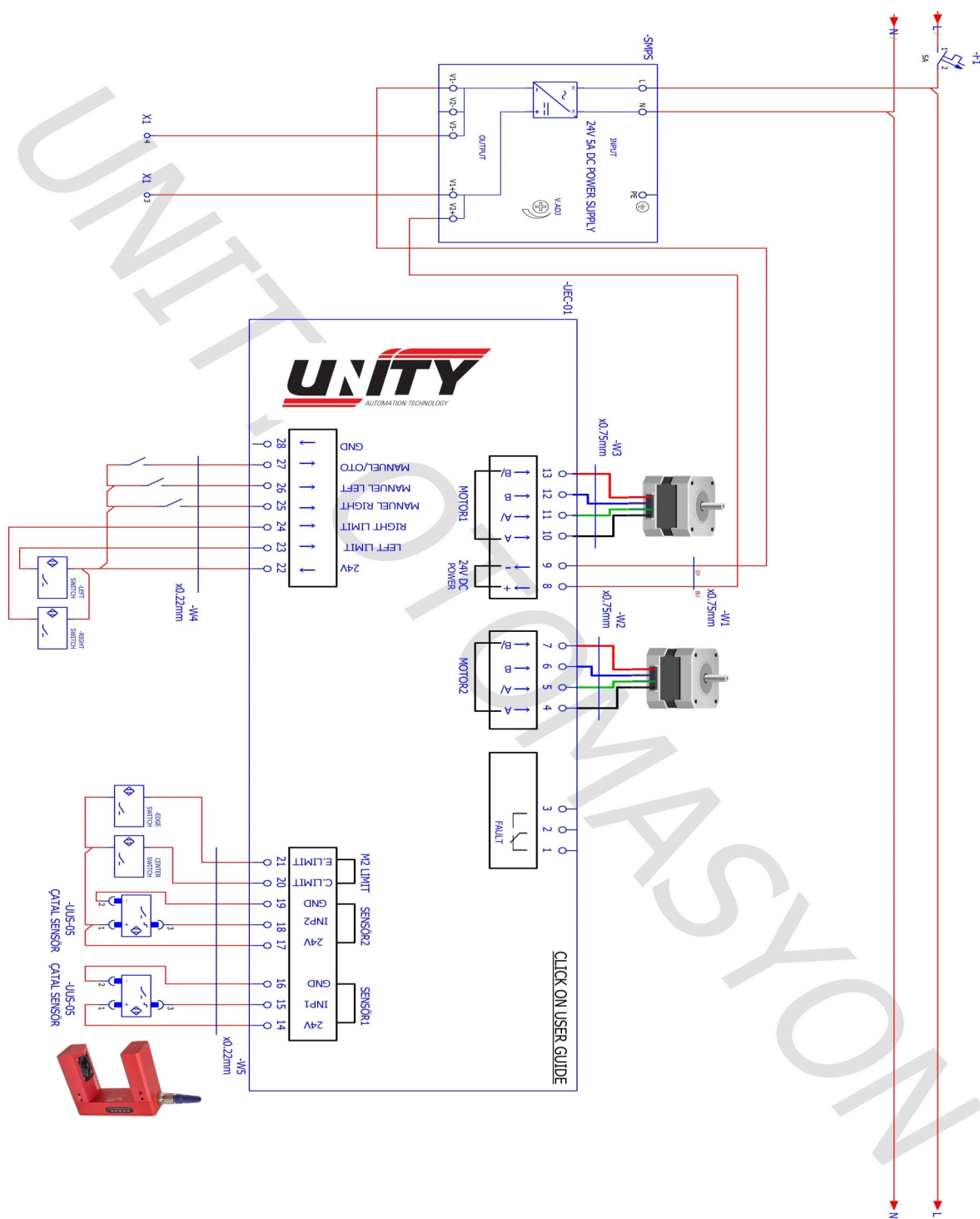
IMPROVE PERFORMANCE WITH OUR TECHNOLOGY

2 TECHNICAL DIMENSIONS

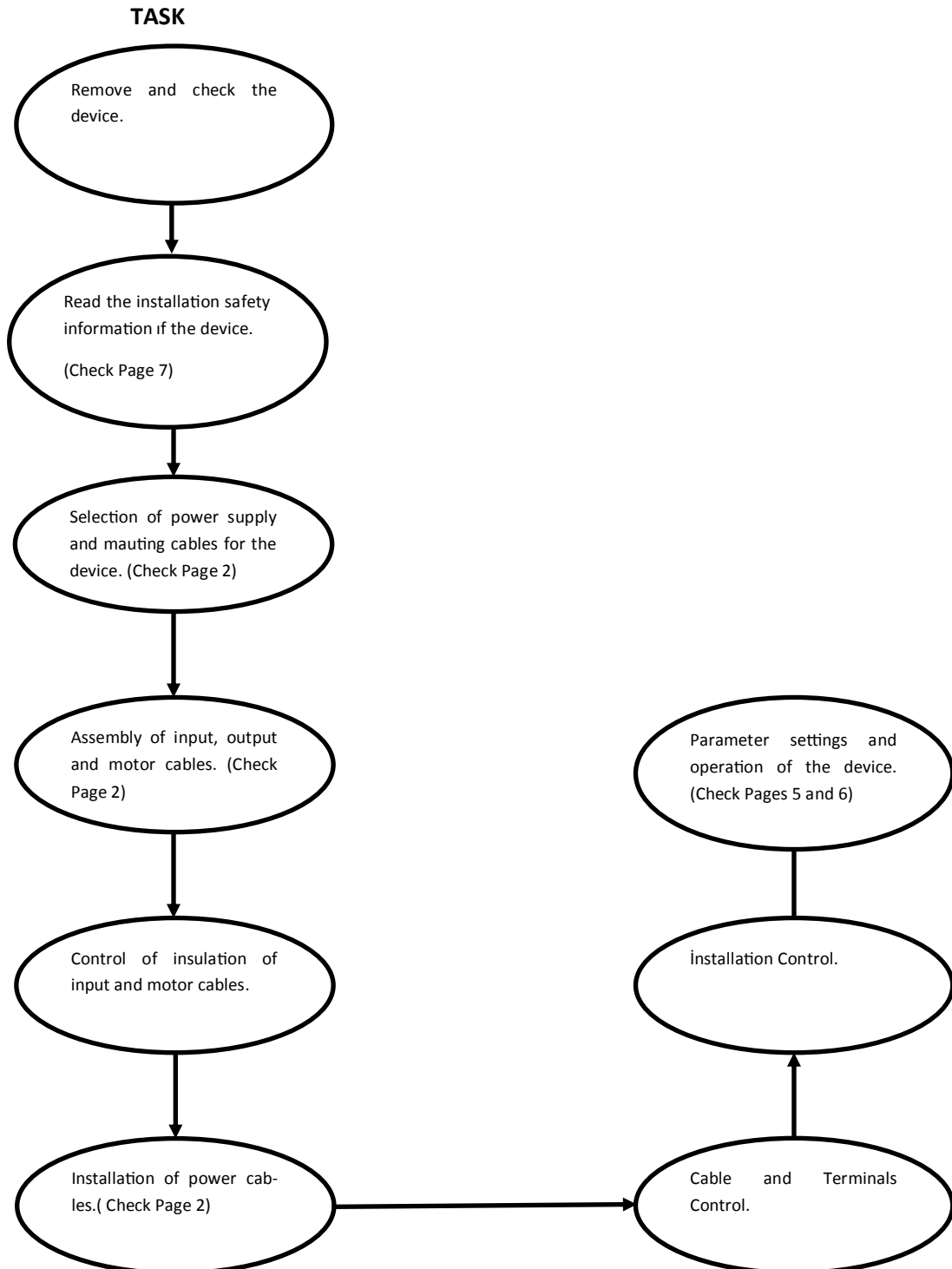


IMPROVE PERFORMANCE WITH OUR TECHNOLOGY

3 DEVICE CONNECTION AND WIRING FLOWCHART



IMPROVE PERFORMANCE WITH OUT TECHNOLOGY

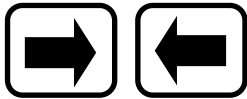




(Used to enter the menu. Press the PGM button for 5 seconds. If you press and hold, you enter the menu.)



(It is used for parameter changes in the menu. It can also be used to increase or decrease the sensitivity when the device is in manual or automatic position outside the menu.)



(It is used to change the parameter value in the menu. It is also used to move the edge control motor to the right and left when the device is in the manual position.)

SET



(Used to product setting voltage transmittance. Checkk Page 5)

CENTER



(Performs average operation between edge control limit sensors of Edge Control motor.)

SENSOR



(Reversing the position of the sensor connected to Edge Control system with software.)

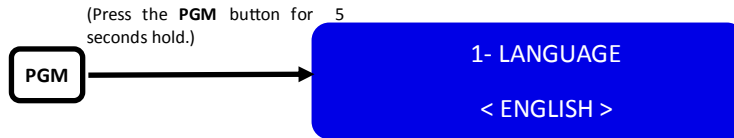
STATUS

AUTOMATIC



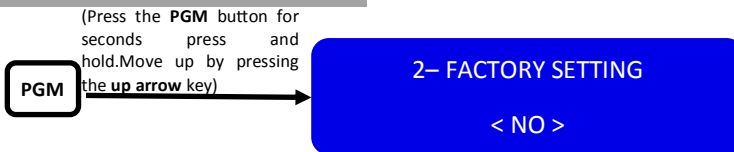
(Performs automatic and manual position of edge controller.)

1-) LANGUAGE SELECTION



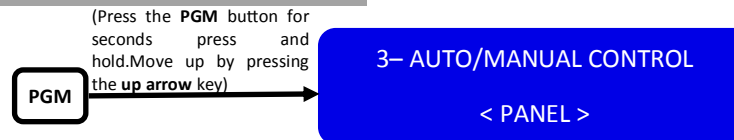
(**PGM** solution once. The bottom tab of the screen will start flashing. Use the right and left arrow keys to select your language. You can trade with **PGM** again)

2-) FACTORY SETTING



(**PGM** solution once. The bottom tab of the display will start flashing. Right-Left arrow keys **<YES>** come to the service by opening the **PGM** you want to process again. Resetting the device to factory settings is complete.)

3-) AUTO/MANUAL CONTROL

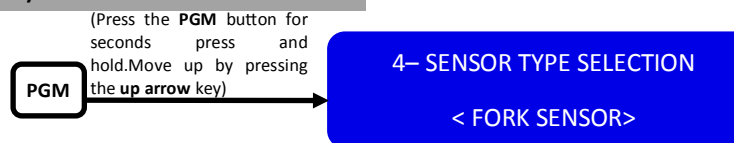


(Press the **PGM** button once. The bottom tab of the display will start flashing. Use the Right-Left arrow keys to select **<PANEL>** or **<TERMINALS>**.)

PANEL : The device's Auto / Manual control is switched via the keypad .

TERMINALS : AUTO/Manual control switching of the device takes place via the terminal on the back of the device.

4-) SENSOR TYPE SELECTION



(Press the **PGM** button once. The bottom tab of the display will start flashing. Use the Right-Left arrow keys to select **<FORK SENSOR>**, **<COLOR SENSOR>** or **<2 FORK SENSOR>**

FORK SENSOR :The sensor analog value is set and cannot be changed.

2 FORK SENSOR :This is the selection used to center the product on both sides. It is realized with 2 fork sensors placed on right and left sides of the material.

COLOR SENSOR :Color sensor when selected, it is necessary to set the analog value of the sensor according to the material.

MATERIAL SETTING PROCESSES:

- Hold the color sensor at an average distance of 1 cm from the material and press the **SET** button.
- Press the **SET** button again after you see the **IDENTIFY MATERIAL** warning.
- After you see the **IDENTIFY ROLLER**, slide the material under the color sensor and press the **SET** button. Set will be completed.

NOTE: MATERIAL SET cannot be performed if the device is in AUTO CONTROL.

IMPROVE PERFORMANCE WITH OUR TECHNOLOGY

5-) AUTO SPEED ADJUSTMENT

(Press the **PGM** button for seconds press and hold. Move up by pressing the **up arrow** key.)

PGM

5-AUTO SPEED ADJUSTMENT
< SENSOR CONNECTED >

(PGM solution once. The lower tab of the screen will start flashing, use the right-left arrow keys to select <SENSOR CONNECTED> or <CONSTANT SPEED>. You can trade with PGM again.)

SENSOR CONNECTED : It adjusts the speed of the edge control motor according to the voltage information from the sensor.

CONSTANT SPEED : It gives constant speed to edge control motor according to the value set in parameter 6.

6-) SPEED ADJUSTMENT

(Press the **PGM** button for seconds press and hold. Move up by pressing the **up arrow** key.)

PGM

6-AUTO/MANUAL CONTROL
<MINIMUM SPEED: 90 >
<MAXIMUM SPEED: 10>

(Press the PGM button once. The bottom tab of the display will start flashing. If <SENSOR-RELATED SPEED> is selected in parameter 5, specify <MINIMUM SPEED: X> and <MAXIMUM SPEED: X>. If <CONST SPEED> is selected in parameter 5, set the value <CONST SPEED: X> which you want to work at constant speed.)

7-) MANUAL SPEED ADJUSTMENT

(Press the **PGM** button for seconds press and hold. Move up by pressing the **up arrow** key.)

PGM

7- MANUAL SPEED ADJUSTMENT
<MNLSPD: % 100 >

(Press the PGM button once. The bottom tab of the display will start flashing. Use the right and left arrow keys to select the manual speed value.)

8-) ALARM OUTPUT TIME

(Press the **PGM** button for seconds press and hold. Move up by pressing the **up arrow** key.)

PGM

8- ALARM OUTPUT TIME
<ALARM TIME: 1 sn >

(Press the PGM button once. The bottom tab of the screen will flash. Use the Right-Left arrow keys to set the alarm time: X SEC. When the edge control motor reaches limit positions, you can get output from the contact of the relay from the relay output located on the back of the device at the end of the period.)

9-) SENSOR ACTION

Press the **PGM** button for seconds press and hold. Move up by pressing the **up arrow** key.)

PGM

9-SENSOR ACTION
<SENSOR ACTION OFF>

(Press the PGM button once. The lower tab of the display will start flashing. Use the Right-Left arrow keys to select the <SENSOR ACTION OFF>, <SENSOR ACTION ON> parameter, one of which is <WAIT IN POSITION> and the other <OPEN>.)

Sensor Action ON <<OPEN OUT>> : If the device is connected to a dual fork sensor and a moving system, the sensors will open up to the external limits when the device is taken manually.

Sensor Action ON <<WAIT IN POSITION>>: If the device is connected to the dual fork sensor and the moving system, the sensors remain in operation when the device is taken manually.

Sensor Action OFF : If the device is set to dual fork sensor and manual position, this parameter is selected.

IMPROVE PERFORMANCE WITH OUR TECHNOLOGY

- ◆ (Disconnect all supply voltages before taking any action on the device.)
- ◆ (Do not disassemble the device when it is under power.)
- ◆ (Do not clean the device with solvents or similar substances. Use only dry cloth to clean the device.)
- ◆ (Check that the connections are correct before starting the device.)
- ◆ (Mount the device away from the contactor, electrical noismitting devices and energy-transmitting lines, which are protected against adverse environmental con-ditions such as humidity, vibration, pollution and high/low temperature.)
- ◆ (To minimize electrical noise, use shielded cable and ground the display)
- ◆ (Contact your seller for any questions on your device.)
- ◆ (The manufacturer shall not be liable in any way for any unwanted circumstan-ces arising from the failure to perform the above precautions.)

IMPROVE PERFORMANCE WITH OUR TECHNOLOGY

OUR CONTACT INFORMATION

9



Adress: İkitelli Organize Sanayi Bölgesi
Eskoop Sanayi Sitesi B-1 Blok No: 59-61-63
İkitelli-Başakşehir/İstanbul/Turkey

Telephone: +90 212 549 30 56 - +90 212 671 30 54

Fax: +90 212 549 30 57

GSM: +90 552 366 30 56

Mail: info@unityotomasyon.com

www.unityotomasyon.com

IMPROVE PERFORMANCE WITH OUR TECHNOLOGY

 **UEC02 EDGE CONTROL**
USER CONTROL 2020