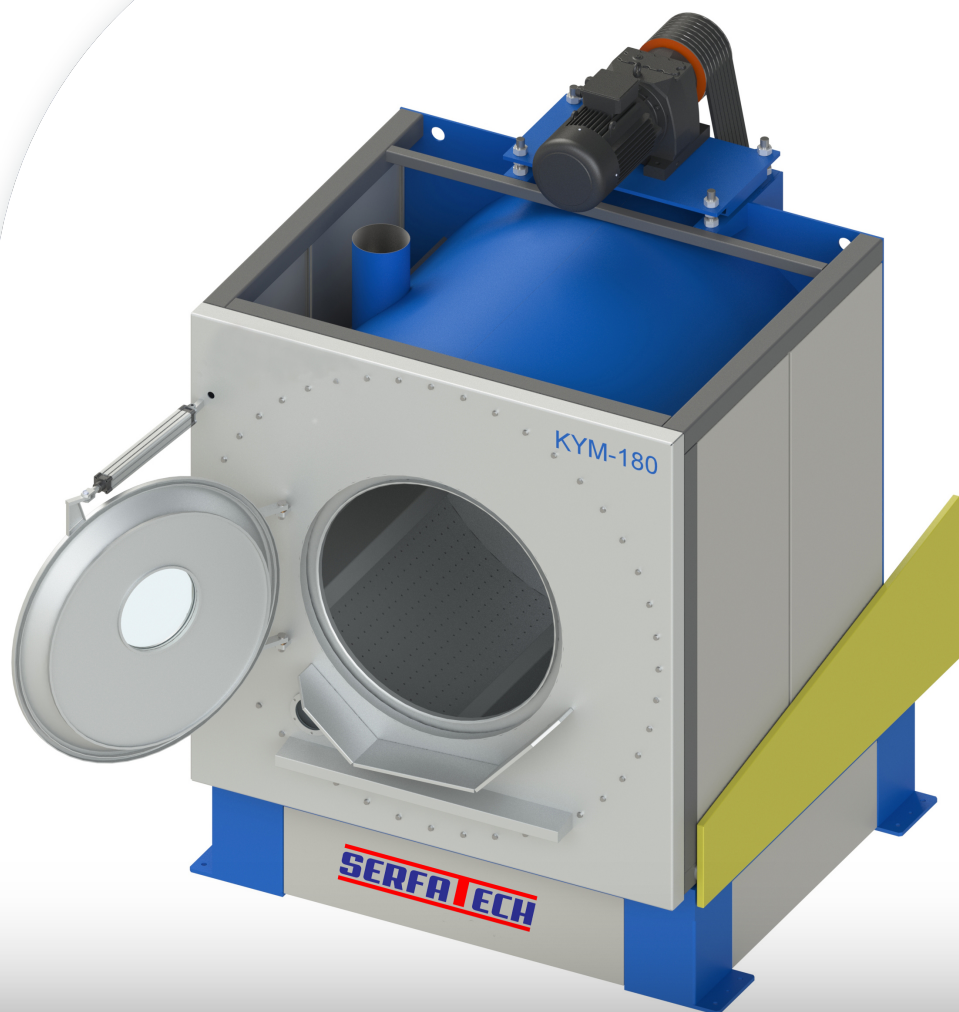


**SERFA TECH**

*Denim Washing Machine*

# ***Denim Washing Machines***



[WWW.SERFATECH.COM](http://WWW.SERFATECH.COM)



## About Us

SERFATECH was founded in Istanbul in 2010 offering the most appropriate solutions to its customers in the field of textile machinery industry bringing technology, knowledge accumulation and expert staff together. We feel the honour and privilege of sharing the knowledge and experience as a corporate identity for customer satisfaction that we have gained from the leading companies in their sectors in the domestic market. We keep producing machines and providing services in order to offer the experience and knowledge in our own company that the sector has given us during the past 15 years. Particularly, our customer portfolio in domestic market and customer-oriented projects has moved us to a better position and enabled us to go ahead as a corporate entity to invest into future.

Targetting the textile sector; we offer the most appropriate solutions to our customers providing design, production, assembling commissioning, warranty, spare parts, consultancy and unlimited service. Our mission is "having a corporate identity starts with establishment" has been reinforced by our consultancy services and turn key projects.

Evaluating the advantages that the global economy offers us and international demands, we are presenting our brand with turn key projects to abroad in a way that we will play a significant role with our completed and prospective projects both at home and abroad.

In our production programme; we present our customers a wide range of product portfolio, from textile washing machine, dyeing machine, drying machine, centrifuge machine, tumble dryer with steam, tumble dryer with natural gas, spraying and brushing boots, ozone washing machine, curing ovens, chemical tank and the whole equipment needed in the production of textile.

Following the recent developments all over the world in line with the needs of customers with its expert production staff who can use all the equipment the technology and information age requires we aim at boosting our export capacity and scraping our name with golden letters into the sector. We are going to on our activities rapidly. We are producing the most appropriate solutions to our customers with our wide range of products as our mission requires it.

We owe thanks to our customers whose demands keep us on the top and those who want to make a difference with their constant choice by preferring our company.



## OUR MISSION

Producing the products our customers claim in the appropriate from in accordance with their expectations without ant delay, achieving customer satisfaction without any condition; constituting confidence between employees, suppliers and customers.



## OUR VISION

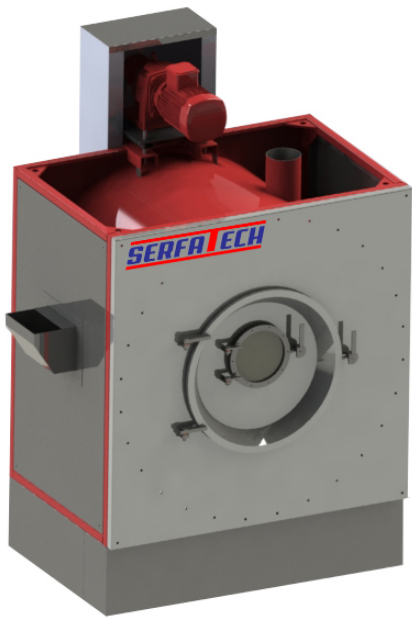
To become a leading institution in the sector and making our brand as a leading brand in the country and providing cost saving high standards products in global quality.

## STANDART FEATURES

- Inner and outer drum is Aisi 304 Quality Stainles Steel
- Chemical inlet pocket
- Automatic cover system
- Controlling unit with PLC controlling
- Controlling motor with inventer
- Speed 0 - 40 rpm

## OPTIONAL FEATURES

- Inner and outer drum is Aisi 316 L Quality Stainles Steel
- Chemical tank & pump
- %60 water saving system
- Indirect steam heating with serpantine
- Heating system with heat exchanger
- Manual or automatic control system
- Speed 0 - 150 rpm



Model	Unit	KYM 2	KYM 12	KYM 30	KYM 60	KYM 100	KYM 180	KYM 230
Capacity Stone Washing	kg/cycle	2	12	30	60	100	180	230
Drum Dimension	mm	Ø530x225	Ø797x500	Ø1000x730	Ø1350x900	Ø1500x1200	Ø1820x1450	Ø1820x1930
Washing Distributing	rpm	0-40	0-40	0-40	0-40	0-40	0-40	0-40
Motor Power	kw	0,25	0,75	2	4	7,5	15	18,5
Tilting Angel of Unloading	degree	-	-	-	-	21	21	21
Door Dimension	mm	Ø300	Ø450	Ø600	Ø810	Ø820	Ø1000	Ø1000
Sample Door Dimension	mm	-	Ø162	Ø230	Ø290	Ø290	Ø390	Ø390
Water Consumption	lt/h	8	35	105	200	350	600	900
Steam Consumption	kg/h	5	20	50	85	150	250	33000%
Power Consumption	kw/h	0,4	1,5	4	8	12	14	15
Dimension (LxWxH)	mm	670x820x500	940x960x1450	1360x1300x1790	190x1690x2250	2100x2000x2300	2350x2640x2550	2350x3330x2550
Weight	kg	100	350	550	1200	2500	3500	4400

# KBM SERIES

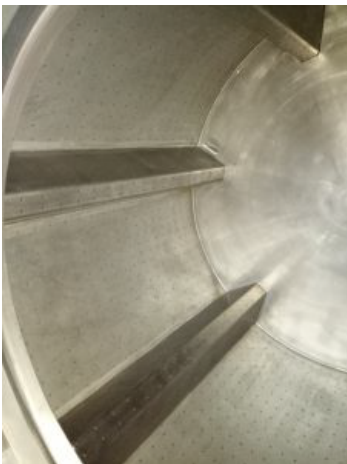
# DYEING MACHINES

## STANDART FEATURES

- Inner and outer drum is Aisi 304 Quality Stainles Steel
- Chemical inlet pocket
- Automatic cover system
- Controlling unit with PLC controlling
- Controlling motor with inventer
- Speed 0 - 40 rpm

## OPTIONAL FEATURES

- Inner and outer drum is Aisi 316 L Quality Stainles Steel
- Drum seperator (Y) for dyeing
- Disassembled inner cover
- Rotating inner cover
- Chemical tank & pump
- %60 water saving system
- Indirect steam heating with serpentine
- Heating system with heat exchanger
- Manual or automatic control system
- Speed 0 - 100 rpm



Model	Unit	KBM 2	KBM 12	KBM 30	KBM 60	KBM 100	KBM 180	KBM 230
Capacity Stone Washing	kg/cycle	2	12	30	60	100	180	230
Drum Dimension	mm	Ø530x225	Ø797x500	Ø1000x730	Ø1350x900	Ø1500x1200	Ø1820x1450	Ø1820x1930
Washing Distributing	rpm	0-40	0-40	0-40	0-40	0-40	0-40	0-40
Motor Power	kw	0,25	0,75	2	4	7,5	15	18,5
Tilting Angel of Unloading	degree	-	-	-	-	21	21	21
Door Dimension	mm	Ø300	Ø450	Ø600	Ø810	Ø820	Ø1000	Ø1000
Sample Door Dimension	mm	-	Ø162	Ø230	Ø290	Ø290	Ø390	Ø390
Water Consumption	lt/h	8	35	105	200	350	600	900
Steam Consumption	kg/h	5	20	50	85	150	250	33000%
Power Consumption	kw/h	0,4	1,5	4	8	12	14	15
Dimension (LxWxH)	mm	670x820x500	940x960x1450	1360x1300x1790	190x1690x2250	2100x2000x2300	2350x2640x2550	2350x3330x2550
Weight	kg	100	350	550	1200	2500	3500	4400

# KKM SERIES

# TUMBLER DRYERS

## STANDART FEATURES

- Inner and outer drum is Aisi 304 Quality Stainles Steel
- Indrect steam heating with serpantine
- Automatic cover system
- Controlling unit with PLC controlling
- Controlling motor with inventer
- Air filter
- Speed 0 - 40 rpm

## OPTIONAL FEATURES

- Inner and outer drum is Aisi 316 L Quality Stainles Steel
- Rotating door
- Natural gasheating
- Humidity controlling unit



Model	Unit	KKM 30	KKM 50	KKM 75	KKM 100	KKM 150	KKM 200	KKM 300
Rated Capacity	kg/cycle	30	50	75	100	150	200	300
Drum Dimension	mm	Ø950x850	Ø1160x1000	Ø1290x1150	Ø1450x1250	Ø1700x1250	Ø1800x1550	Ø1750x2478
Work Cycle	rpm	0-30	0-30	0-30	0-30	0-30	0-30	0-30
Motor Power	kw	0,55	1	2	2,2	4,5	5,5	2x3
Tilting Angle of Unloading	degree	-	-	11	11	13	14	14
Door Dimension	mm	Ø535	Ø650	Ø900	Ø1150	Ø1220	Ø1320	Ø1320
Fan	piece	1	1	2	1	2	2	4
Dim. of Air Exhaust Port	mm	210x250	210x300	300x500	220x315	340x500	340x500	550x550
Steam Consumption	kg/h	50	90	130	180	280	380	580
Power Consumption	kw/h	0,6	1,2	1,7	2	3,8	8	10
Dimension (LxWxH)	mm	1500x1270x1900	1500x1660x2290	1750x2000x2750	2000x2020x2900	2500x2500x2500	2500x2700x3450	2980x2870x2900
Weight	kg	500	1200	2300	2650	3000	4500	5000

# KSM SERIES

# CENTRIFUGE/HYDRO EXTRACTOR

## STANDART FEATURES

- Inner drum is Aisi 304 Quality Stainles Steel
- Automatic cover system
- Electromagnetic brake system
- Balancing system
- Suspension system with three legs for stability controlling.
- Controlling motor with inventer
- Speed 0 - 900 rpm

## OPTIONAL FEATURES

- Inner and outer drum is Aisi 316 L Quality Stainles Steel
- Loading & Unloading lift
- Protection



Model	Unit	KFM 120
Capacity	kg/cycle	120
Drum (Diameter x Length)	mm	Ø1200x600
Cycle Time	min.	10
Motor Power	kw	18,5
Door Diameter	mm	Ø1200
Discharge Channel Diameter	mm	Ø130
Drum Speed	rpm	0-900
Power Transmission	type	Direct Drive
Dimension (L x W x H)	mm	1690x1775x1285
Weight	kg	2200



TURKEY - ISTANBUL  
+90 532 289 4915  
INFO@SERFATECH.COM  
WWW.SERFATECH.COM